



Haas
FT Team
OFFICIAL MACHINE TOOL

Simplified

S
I
M
P
L
I
F
I
E
D



5-AXIS MACHINING

For Every Shop



5-AXIS SIMPLIFIED

1. Choose your 5-Axis Mill

- Define the size of your workpiece and find a platter size to match
- Select the right spindle speed
- Decide on the number of tools

2. Pick Your Tools

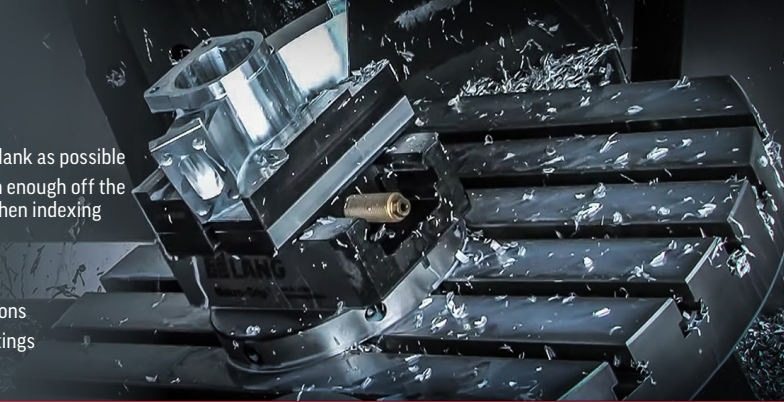
- Use the shortest tools possible
- Use shrink fit holders for speeds above 10,000 rpm
- High speeds need balanced tools.

3. Hold On Tight

- Grip as much of the blank as possible
- Position the part high enough off the table for clearance when indexing

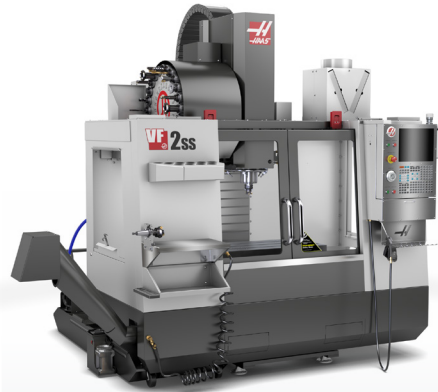
4. Program Away

- Use a CAM System
- Plan out your operations
- Watch your CAM settings



Add a Rotary for Easy 5-Axis Haas plug-and-play dual-axis rotary tables and indexers make 5-axis machining easier than ever.

All-in-One 5 Axis Haas Machines Reduce setups and increase accuracy on multi-sided and complex parts.



If you own a
VF-1 or VF-2

Choose a TRT160
or a TR160



If you own a
VF-3, VF-4, or VF-5

Choose a TRT210
or a TR210

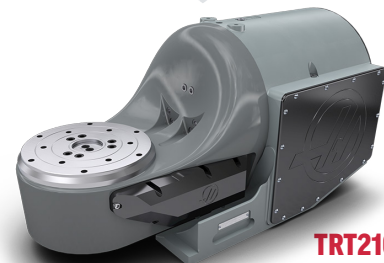


If you own a
VF-6 through VF-12

Choose a TRT310
or a TR310



TRT160



TRT210



TRT310



TR160



TR210



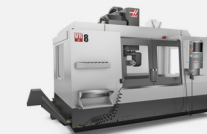
TR310



UMC-350HD
40 Taper / 10,000 rpm
18+1 Tool Capacity
15" x 14" x 12" Travels
(381 x 356 x 305 mm)



UMC-350
30 Taper / 10,000 rpm
20+1 Tool Capacity
15" x 14" x 12" Travels
(381 x 356 x 305 mm)



VR-8
HSK-A63 Taper / 20,000 rpm
50+1 Tool Capacity
64" x 40" x 42" Travels
(1626 x 1016 x 1067 mm)



UMC-500
40 Taper / 8100 rpm
30+1 Tool Capacity
24" x 16" x 16" Travels
(610 x 406 x 406 mm)



UMC-750
40 Taper / 8100 rpm
30+1 Tool Capacity
30" x 20" x 20" Travels
(762 x 508 x 508 mm)



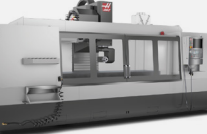
VR-9
HSK-A63 Taper / 20,000 rpm
50+1 Tool Capacity
84" x 40" x 42" Travels
(2134 x 1016 x 1067 mm)



UMC-500SS
40 Taper / 12,000 rpm
30+1 Tool Capacity
24" x 16" x 16" Travels
(610 x 406 x 406 mm)



UMC-750SS
40 Taper / 12,000 rpm
30+1 Tool Capacity
30" x 20" x 20" Travels
(762 x 508 x 508 mm)



VR-11
HSK-A63 Taper / 20,000 rpm
50+1 Tool Capacity
120" x 40" x 42" Travels
(3048 x 1016 x 1067 mm)



UMC-1000-P
40 Taper / 8100 rpm
30+1 Tool Capacity
40" x 25" x 25" Travels
(1016 x 635 x 635 mm)



UMC-1000
40 Taper / 8100 rpm
30+1 Tool Capacity
40" x 25" x 25" Travels
(1016 x 635 x 635 mm)



EC-1600ZT-5AX
50 Taper / 7500 rpm
30+1 Tool Capacity
64" x 50" x 40" Travels
(1626 x 1270 x 1016 mm)

UMC-1000SS-P
40 Taper / 12,000 rpm
30+1 Tool Capacity
40" x 25" x 25" Travels
(1016 x 635 x 635 mm)

UMC-1000SS
40 Taper / 12,000 rpm
30+1 Tool Capacity
40" x 25" x 25" Travels
(1016 x 635 x 635 mm)



UMC-1600-H
50 Taper / 7500 rpm
30+1 Tool Capacity
64" x 50" x 40" Travels
(1626 x 1270 x 1016 mm)

UMC-1250
40 Taper / 8100 rpm
30+1 Tool Capacity
50" x 30" x 28" Travels
(1270 x 762 x 711 mm)

UMC-1500-DUO
40 Taper / 8100 rpm
30+1 Tool Capacity
60" x 20" x 20" Travels
(1524 x 508 x 508 mm)

GM-2-5AX
HSK 63F / 20,000 rpm
30+1 Tool Capacity
145" x 87.5" x 39" Travels
(3683 x 2223 x 1000 mm)

UMC-1250SS
40 Taper / 12,000 rpm
30+1 Tool Capacity
50" x 30" x 28" Travels
(1270 x 762 x 711 mm)

UMC-1500SS-DUO
40 Taper / 12,000 rpm
30+1 Tool Capacity
60" x 20" x 20" Travels
(1524 x 508 x 508 mm)

HDC-3-5AX
HSK-A100 / 6000 rpm
50+1 Tool Capacity
150" x 106" x 43" Travels
(3810 x 2692 x 1092 mm)

IT'S EASIER – WITH PICTURES, VIDEOS, AND GRAPHICS.

THE HAAS CONTROL – Designed, built, and programmed by Haas.

The Haas Control – hardware and software – is designed and built in-house, and optimized specifically for Haas machine tools. If there is a problem – Haas Automation takes full responsibility for the entire machine. The Haas control is easy to learn and use, and it is the same across the entire product line. Haas machines are also used extensively in educational institutions around the world, so graduating students are already familiar with the Haas control, which makes finding new operators and programmers easier, and simplifies training.

STANDARD CONTROL FEATURES:

- Dedicated Keypad
- One-Button Features
- Multi-Function Jog Handle
- 15" Color LCD Screen
- Ethernet Interface
- USB Port
- Advanced Tool Management
- 1 GB Memory
- Power-Failure Detection Module
- M130 Media Player
- HaasConnect Mobile Monitoring
- WiFi Connectivity



VISUAL PROGRAMMING SYSTEM

The Haas Visual Programming System uses graphical templates and a form-like interface to help you quickly create G-code programs for not only basic part features, but also more complex operations, like Y-axis milling/drilling, probing, and more. Simply define the feature in the template, and VPS then outputs working G-code at the touch of a button. VPS also includes a custom template generator, so you can create templates for your own part features or frequently used programs.



Dynamic Work Offsets + Tool Center Point Control = MAKING 5-AXIS EASIER

Dynamic Work Offsets (DWO) and Tool Center Point Control (TCPC) are software features in the Haas control that make setting up 4- and 5-axis jobs as easy as setting up a 3-axis machine. They allow an operator to place the part and fixture anywhere on the machine's table or platter, regardless of the location that was programmed in the CAM system. DWO and TCPC determine the difference between the centers-of-rotation programmed in the CAM system and the centers-of-rotation within the machine and apply the appropriate offsets.



Alarm Videos

When your machine alarms out, the first thing you want to know is: Why? The Haas control not only includes fully descriptive alarm text explaining the problem, but for many common alarms, it also includes short videos explaining the alarm, and providing valuable troubleshooting tips to resolve the issue.

MAKE THE CONNECTION WITH HAASCONNECT

Get your machine status notifications anywhere, on any device! The Haas Control has the ability to send you, and others you designate, email notifications about the operating status of your Haas machine. Set up is simple and easy through the MyHaas Portal and HaasCNC.com.

