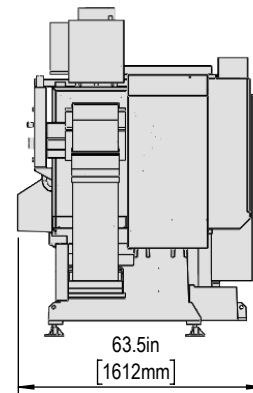
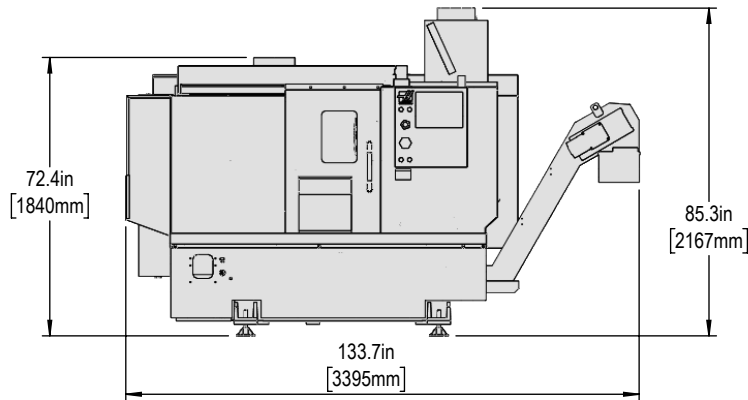
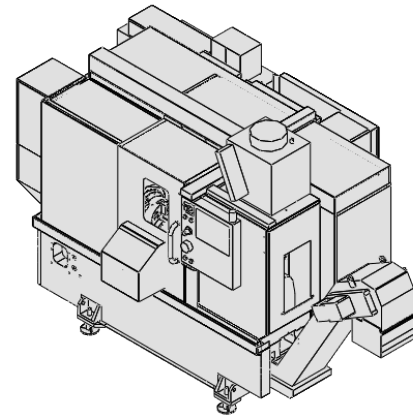
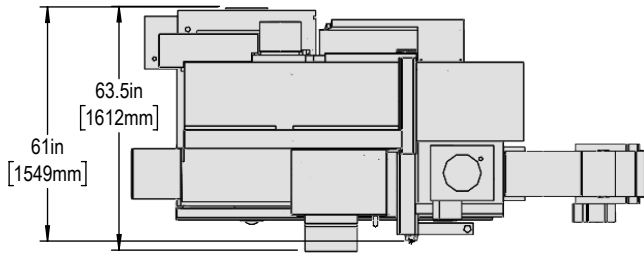


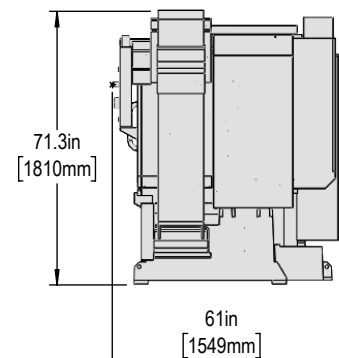
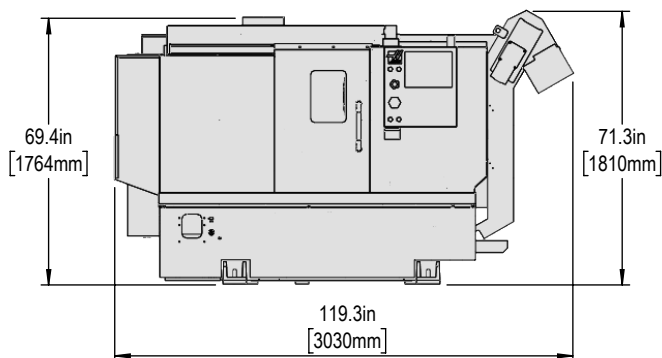


Installed Dimensions

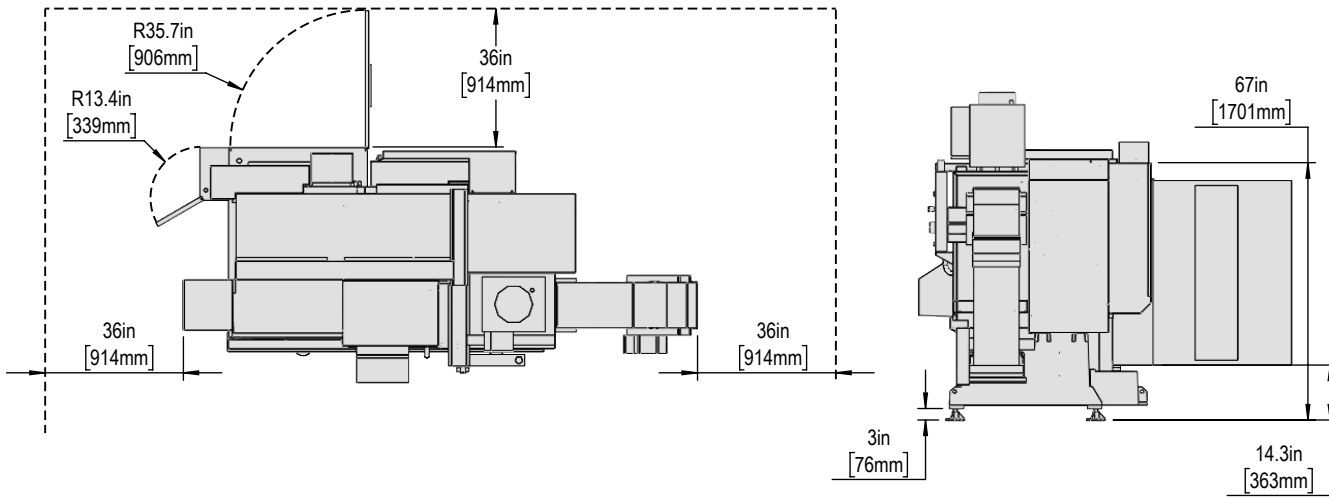


Shipping Dimensions

*All Height Dimensions Based on Suggested Leveling Pad Height



Air & Power



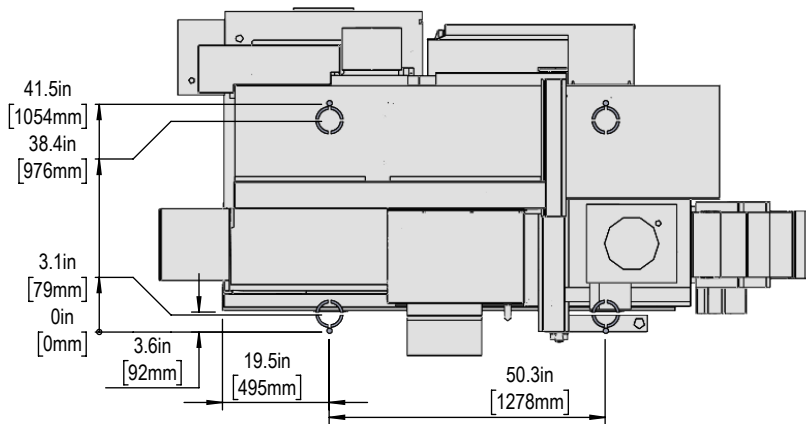
Maintain 3 feet [915mm] clearance to the nearest obstruction around all sides of machine perimeter for maintenance access

Note:

Machine must be placed on one continuous concrete slab. Slab should extend 12in [305mm] beyond anchor holes in all directions

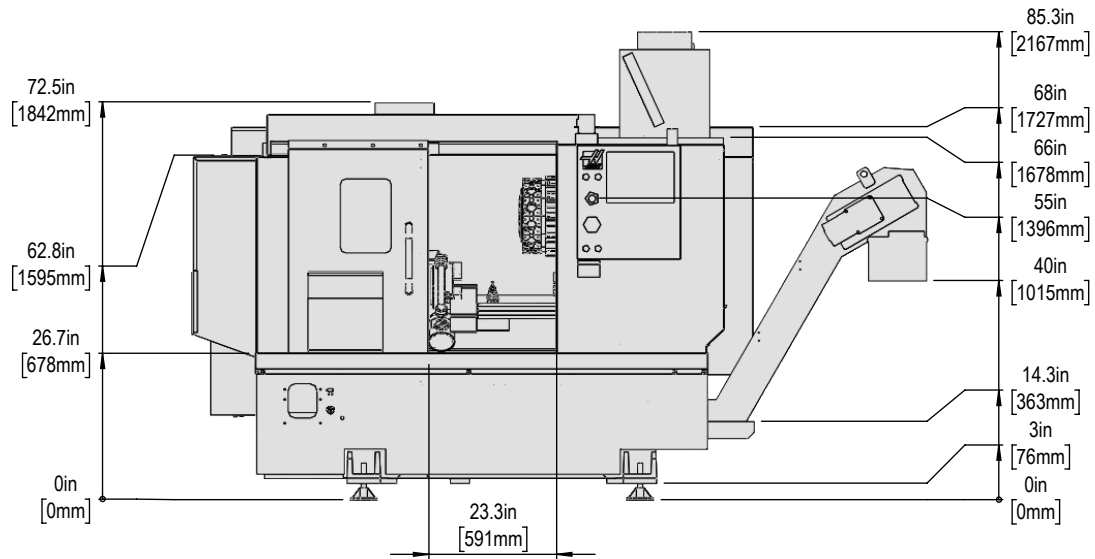
Anchor Pattern

Anchor Hole Detail
 \varnothing 0.625in [25mm]
 ∇ 2.0in [50mm]-
 ∇ 2.25in [57mm]

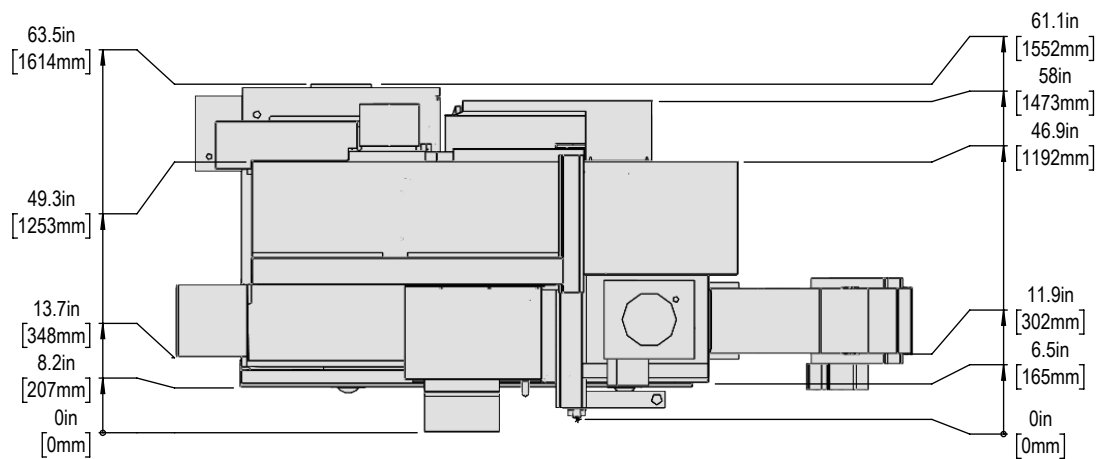


For precise locations and specifications please use template in Anchoring Kit found at Haascnc.com

Height Breakdown

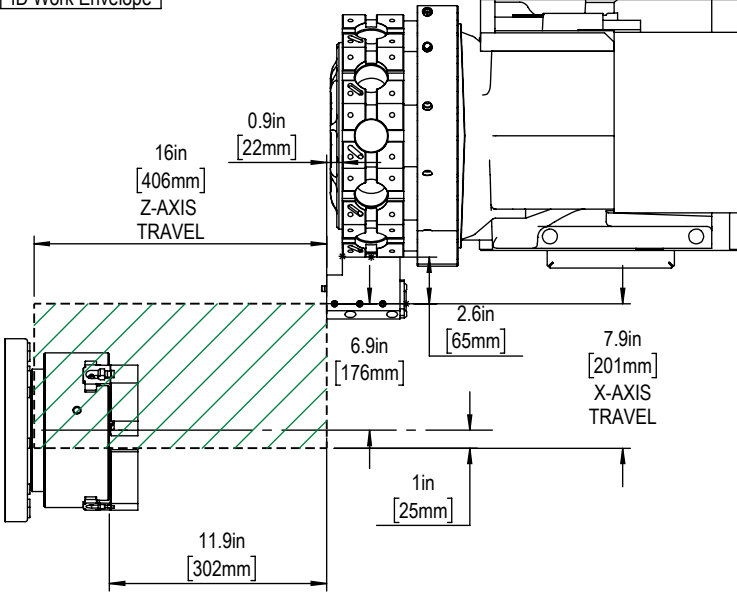


Width Breakdown

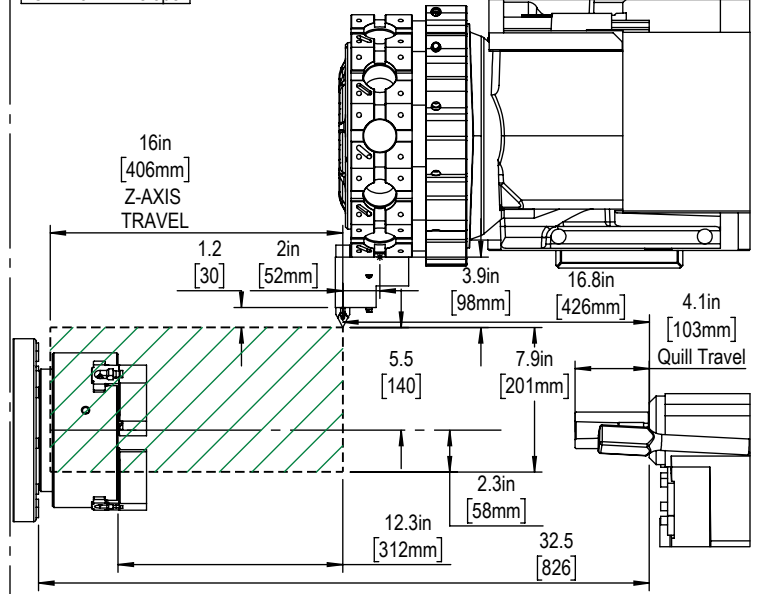


Parallel Plane Envelope Diagrams

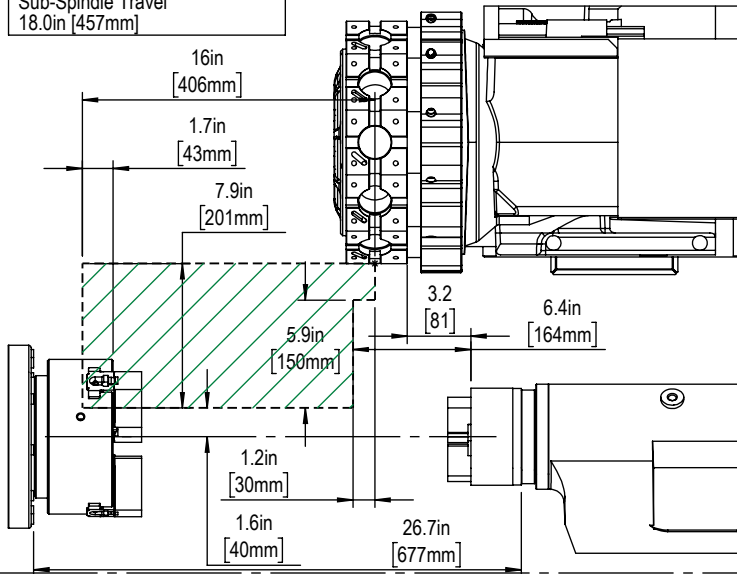
ID Work Envelope



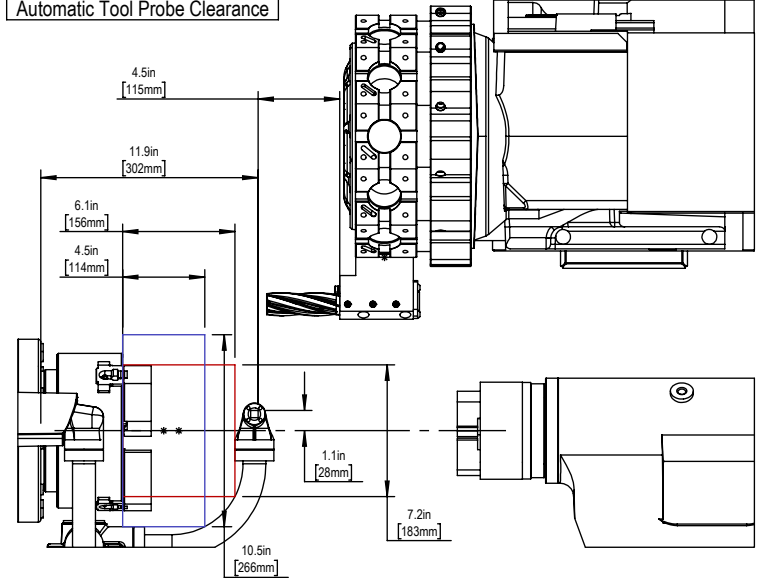
OD Work Envelope



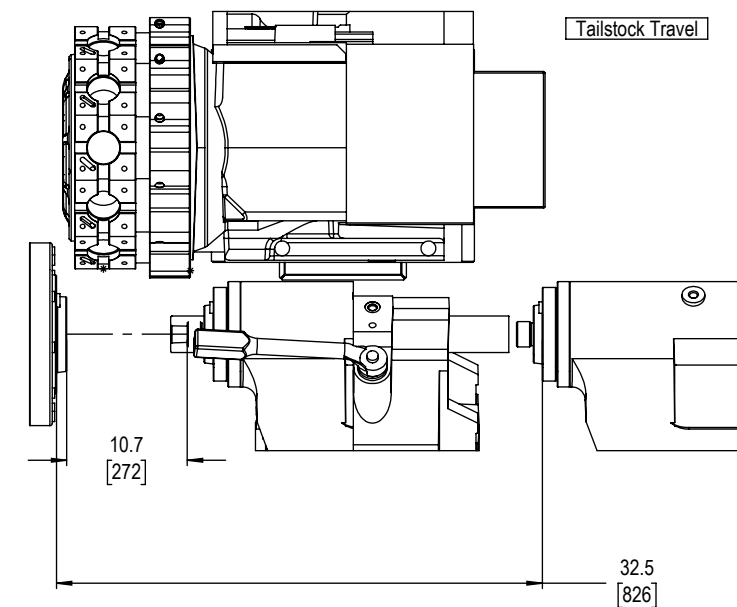
No main/sub-spindle chuck travel
Sub-spindle Travel
18.0in [457mm]



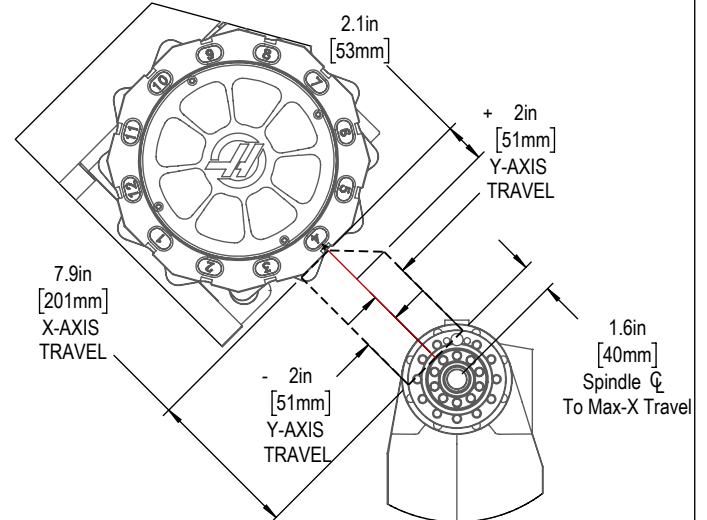
Automatic Tool Probe Clearance

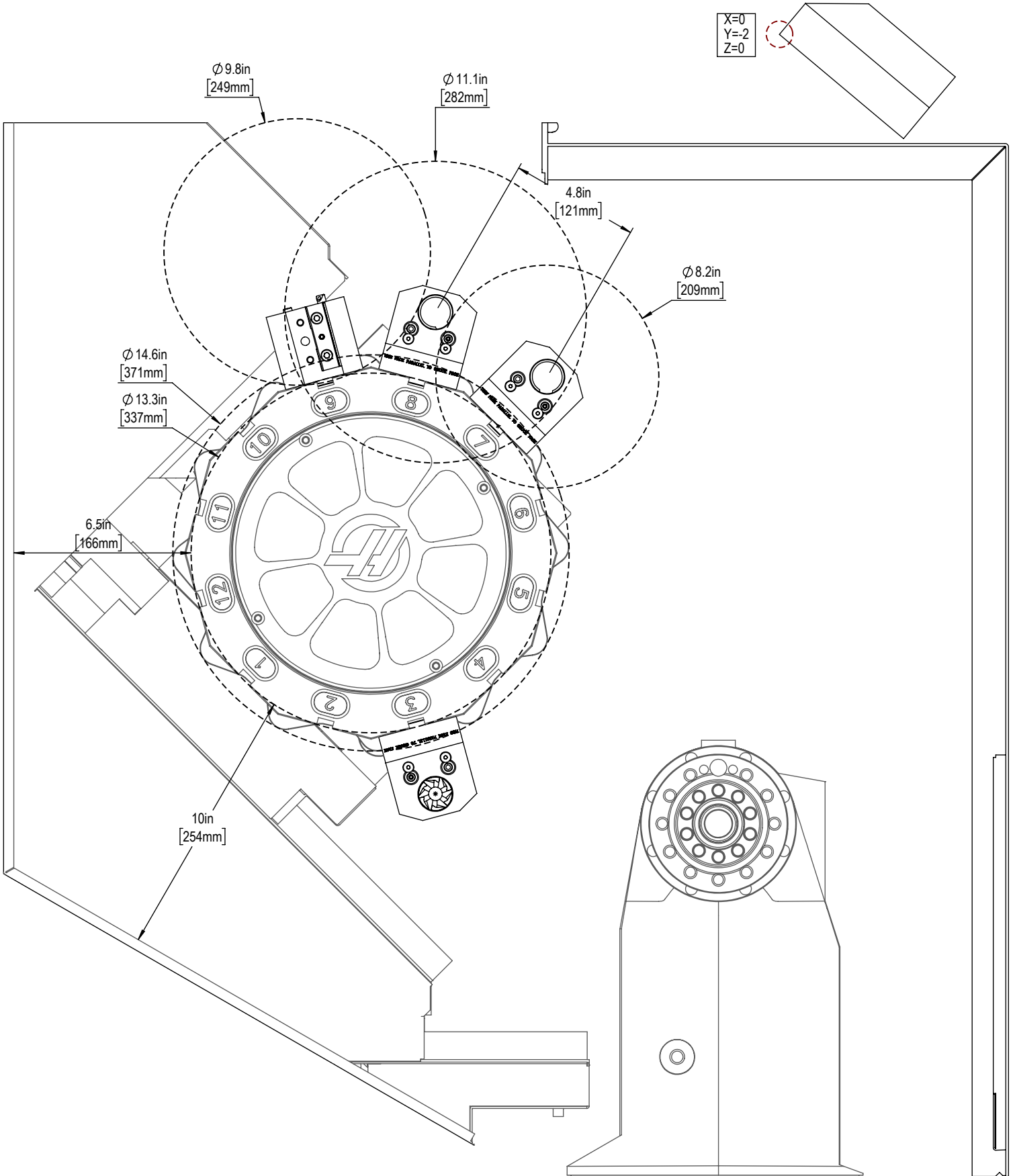


Tailstock Travel

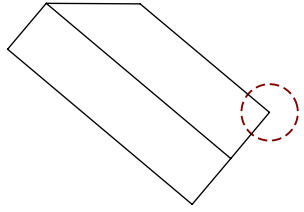


Y-AXIS Travels

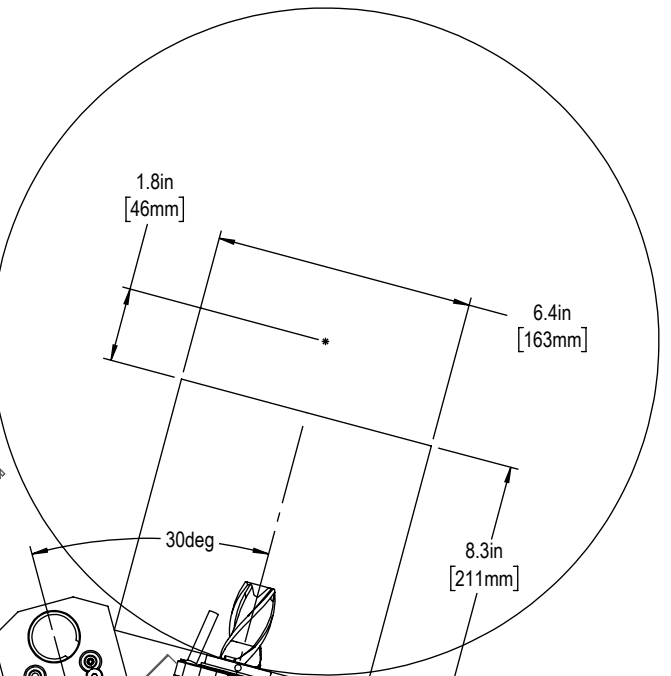




X=7.9
Y=2
Z=0



Ø 16.5in
[419mm]
MAX PART SIZE



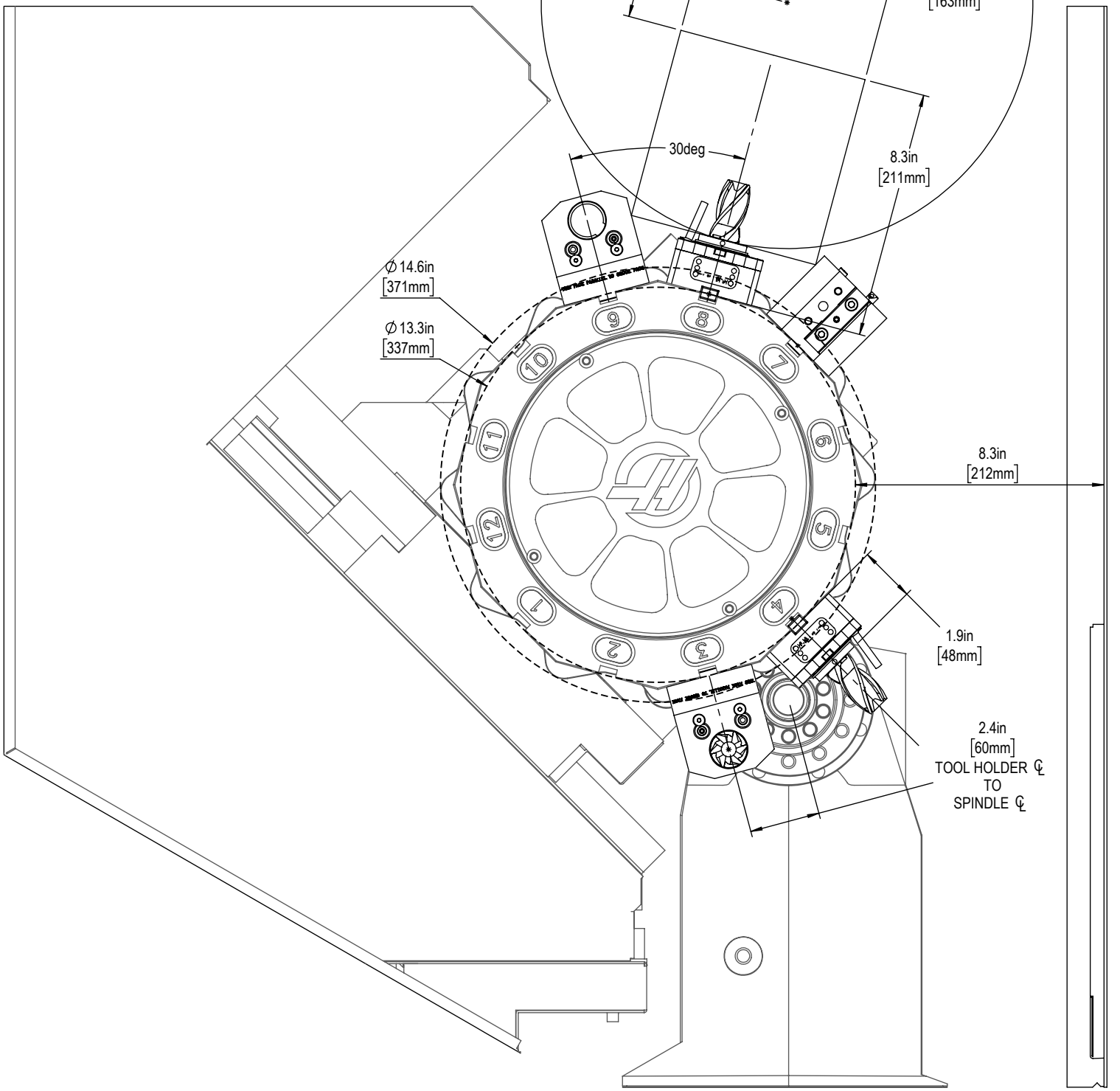
Ø 14.6in
[371mm]

Ø 13.3in
[337mm]

8.3in
[212mm]

1.9in
[48mm]

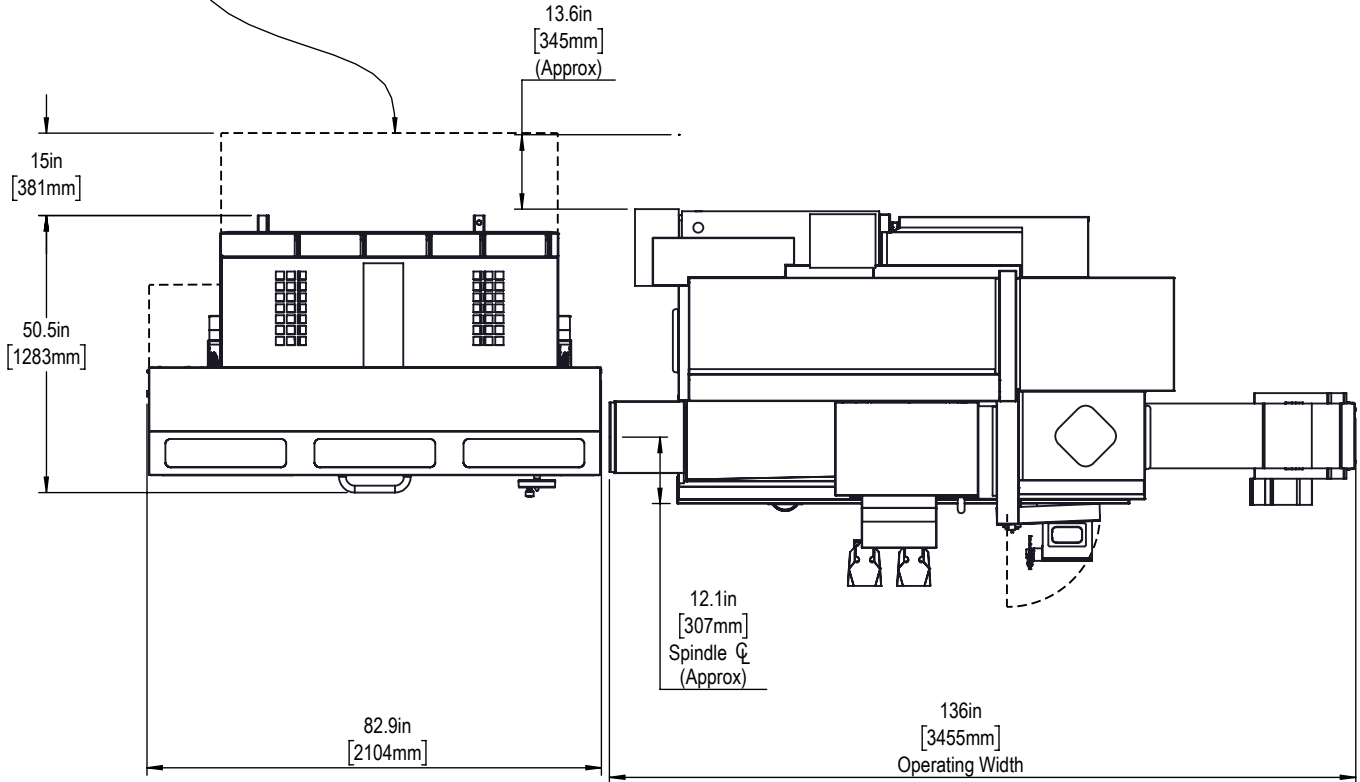
2.4in
[60mm]
TOOL HOLDER Ø
TO
SPINDLE Ø

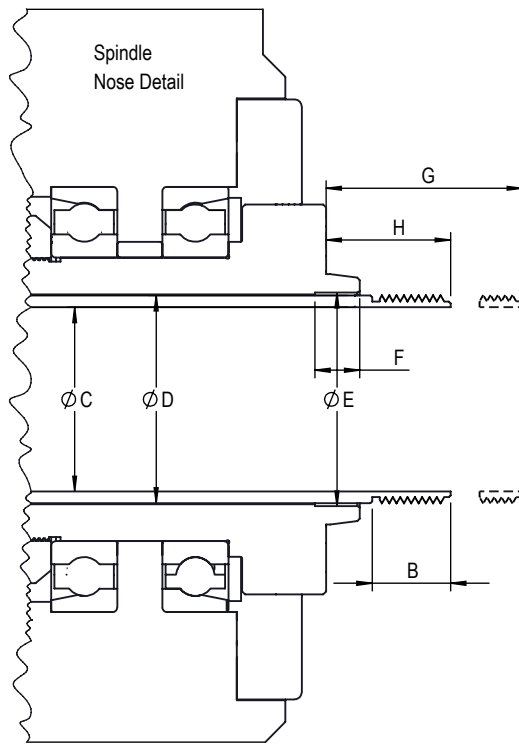
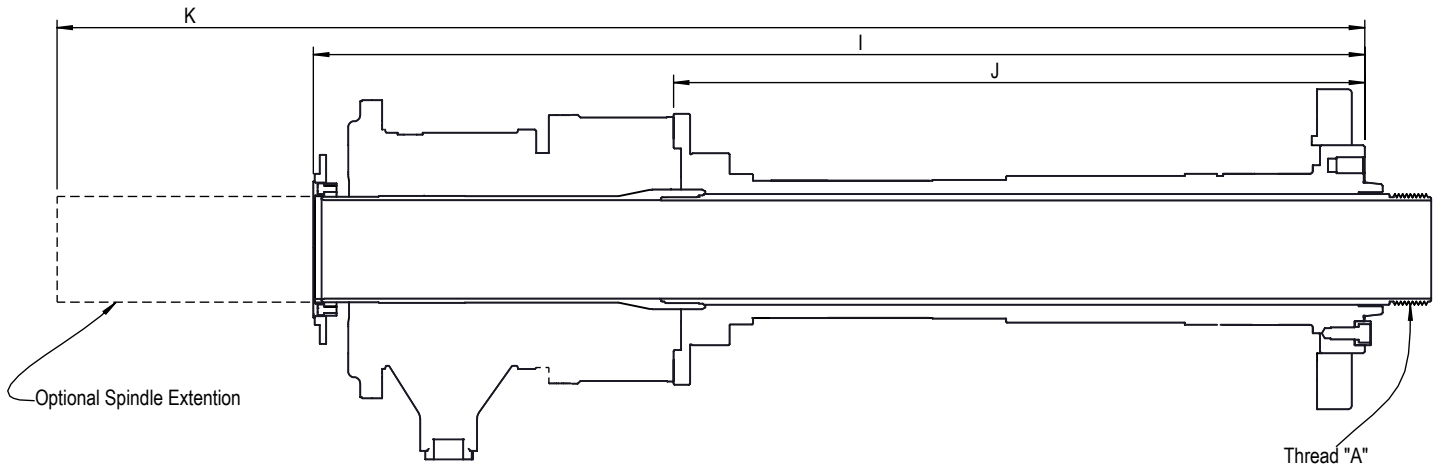




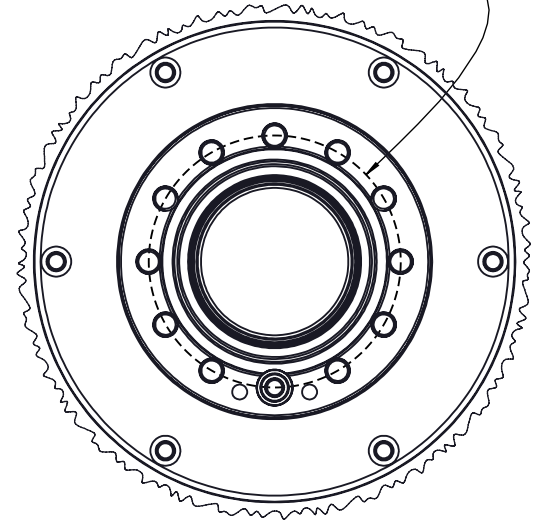
Barfeeder Layout

Footprint with Bar Feeder in Rear / Service position



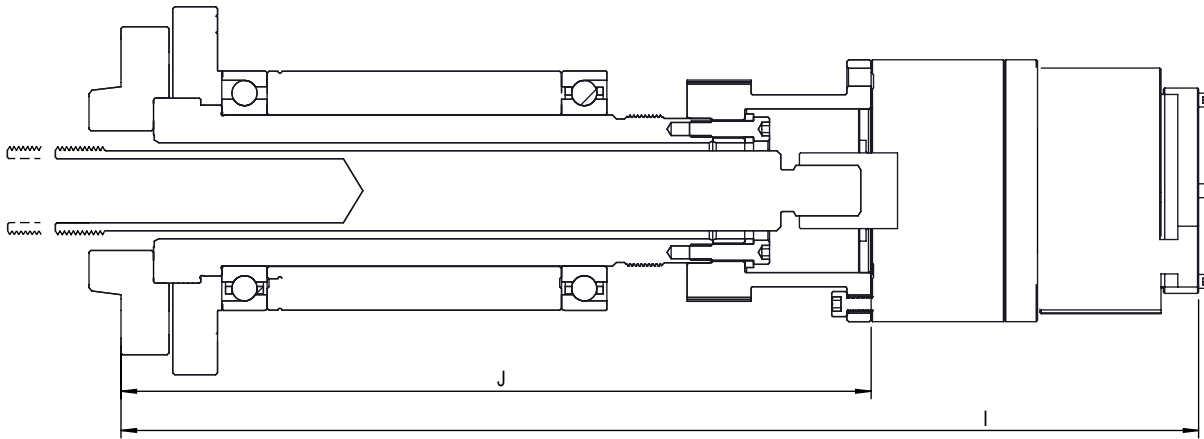


BHC and Spindle Nose dimensions per American Standard Bulletin ASA B5.9 1960

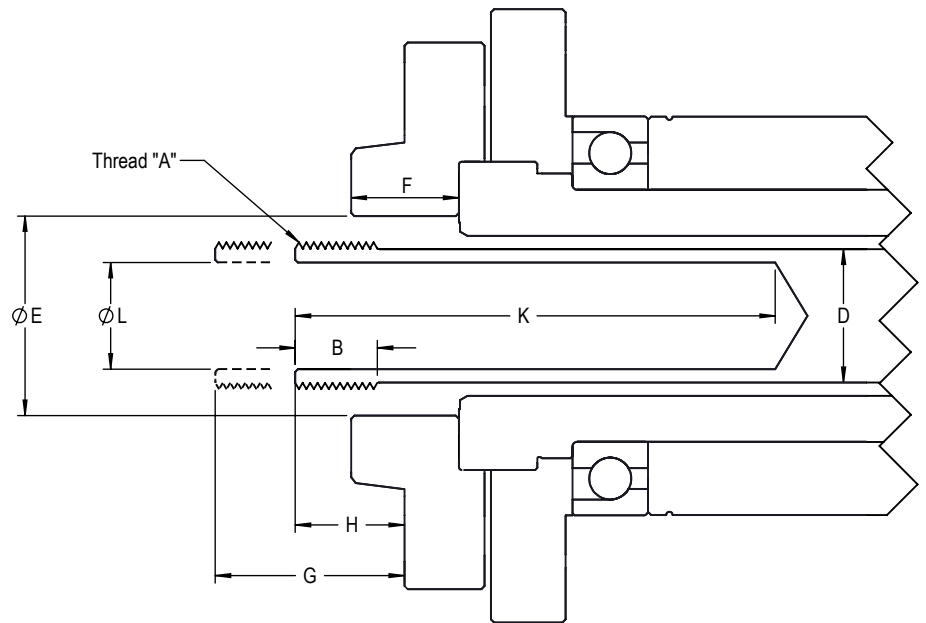
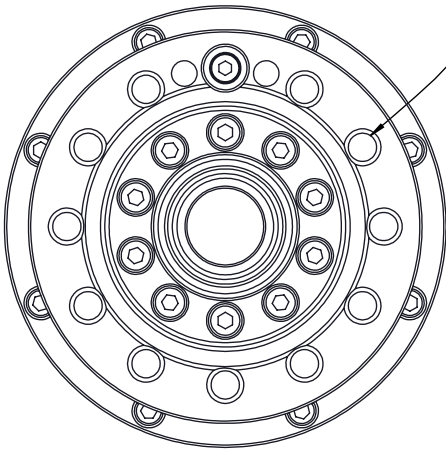


The following dimensions should be used as a reference only. Haas uses many different vendors for our drawtube assemblies. If any custom workholding is required Haas recommends you retrieve the exact dimensions from your delivered machine.

ST-10/15/Y/Reboot Spindle Schematic for all vintages					
DESCRIPTION	DIMENSION	ST-10/Y		ST-15/Y	
		SAE	METRIC	SAE	METRIC
MAIN OR SUB SPINDLE & TYPE		Main / A2-5		Main / A2-6	
DIAMETER OF THREAD	A	2.165"	55 MM	2.95"	75 MM
THREAD PITCH	A	0.0787"	2.0 MM	0.0787"	2.0 MM
INTERNAL OR EXTERNAL	A	External		External	
LENGTH OF THREAD	B	0.70"	17.78 MM	1.36"	34.54 MM
DRAWTUBE INNER DIAMETER	C	1.81"	45.98 MM	2.56"	65 MM
DRAWTUBE OUTER DIAMETER	D	2.25"	57.15 MM	3.03"	76.96 MM
COUNTERBORE INNER DIAMETER	E	2.50"	63.5 MM	3.52"	89.4 MM
COUNTERBORE DEPTH	F	0.620"	15.75 MM	0.75"	19.05 MM
DRAWTUBE EXTENDED DISTANCE	G	1.52"	38.6 MM	2.50"	63.5MM
DRAWTUBE RETRACTED DISTANCE	H	0.93"	23.6 MM	1.52"	38.6MM
SPINDLE FACE TO BACK OF UNION	I	30.78"	781.8 MM	33.53"	851.67 MM
SPINDLE FACE TO UNION ADAPTOR	J	22.75"	578 MM	22.53"	572.3 MM
TO BACK OF EXTENTION (OPTION)	K	48.0"	1219MM	48.0"	1219MM



BHC and Spindle Nose dimensions per
American Standard Bulletin ASA B5.9 1960



The following dimensions should be used as a reference only. Haas uses many different vendors for our drawtube assemblies. If any custom workholding is required Haas recommends you retrieve the exact dimensions from your delivered machine.

SUB-SPDL-A2-5 for ST-10 to ST-25/ST-28			
DESCRIPTION	DIMENSION	SAE	METRIC
MAIN OR SUB SPINDLE & TYPE		Sub-Spindle / A2-5	
DIAMETER OF THREAD	A	1.378"	35 MM* or 40 MM
THREAD PITCH	A	0.059"	1.5 MM
INTERNAL OR EXTERNAL	A	External	
LENGTH OF THREAD	B	0.50"	12.7 MM
DRAWTUBE INNER DIAMETER	C	N/A - SOLID DRAWBAR	
DRAWTUBE OUTER DIAMETER	D	1.25"	31.75MM
COUNTERBORE INNER DIAMETER	E	1.870"	47.5 MM
COUNTERBORE DEPTH	F	1.01"	25.65MM
EXTENDED DISTANCE TO NOSE	G	1.465"	37.2 MM
RETRACTED DISTANCE TO NOSE	H	0.874"	22.2 MM
FROM SPINDLE FACE TO BACK OF UNION	I	11.72	297.7MM
FROM SPINDLE FACE TO UNION ADAPTOR	J	16.84	427.7MM
EJECTOR POCKET DEPTH	K	4.5"	114.3MM
EJECTOR POCKET DIAMETER	L	1.0"	25.4MM
*M35 applies to Sub-Spindles made after July 2019 - M40 applies to older vintages			