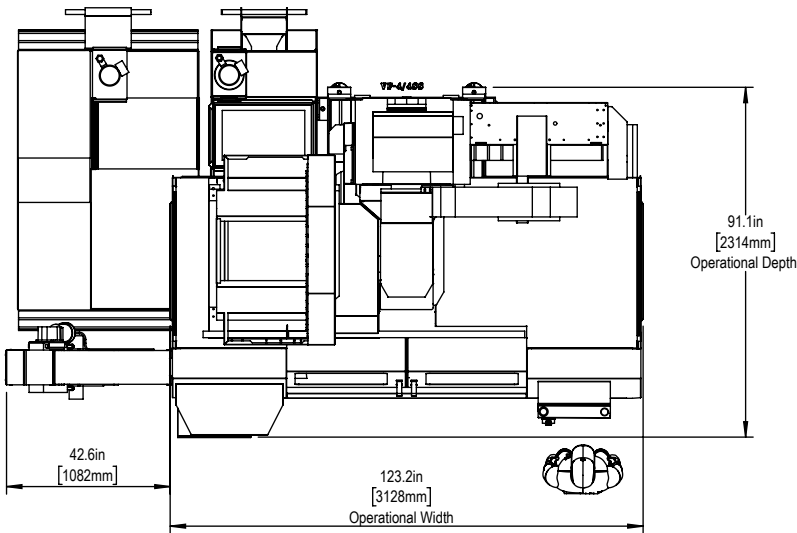
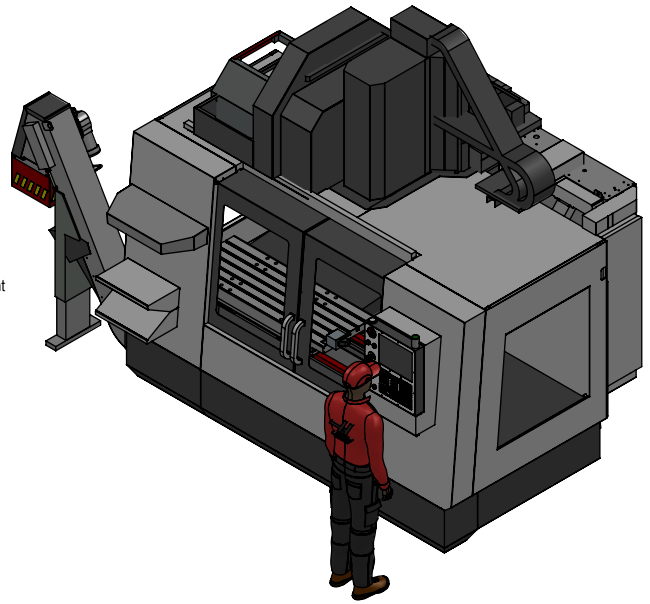
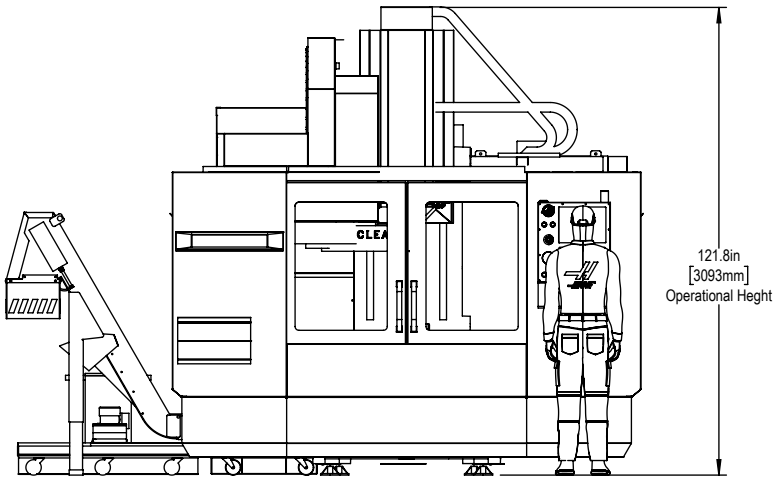
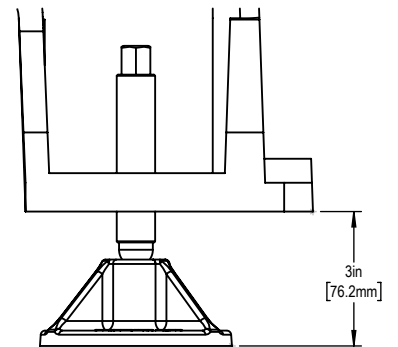




Installed Dimensions

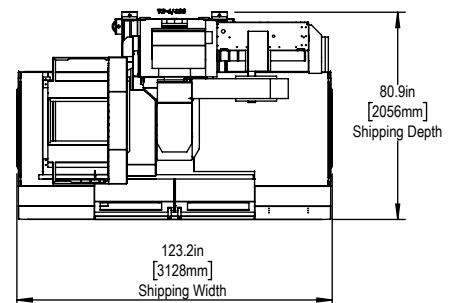
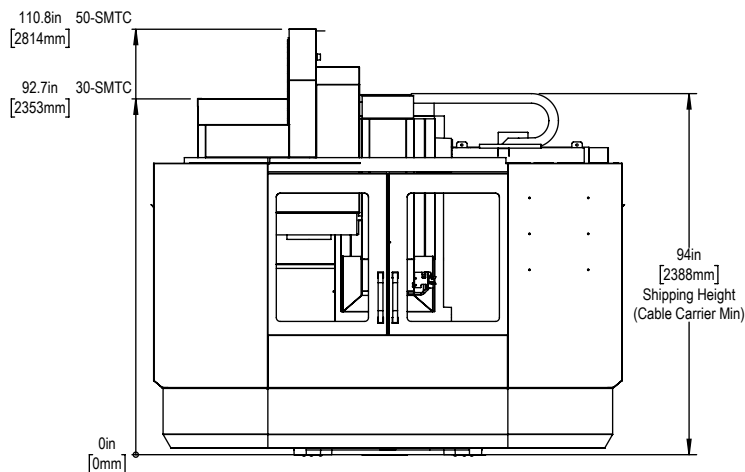


Leveling Pad Height

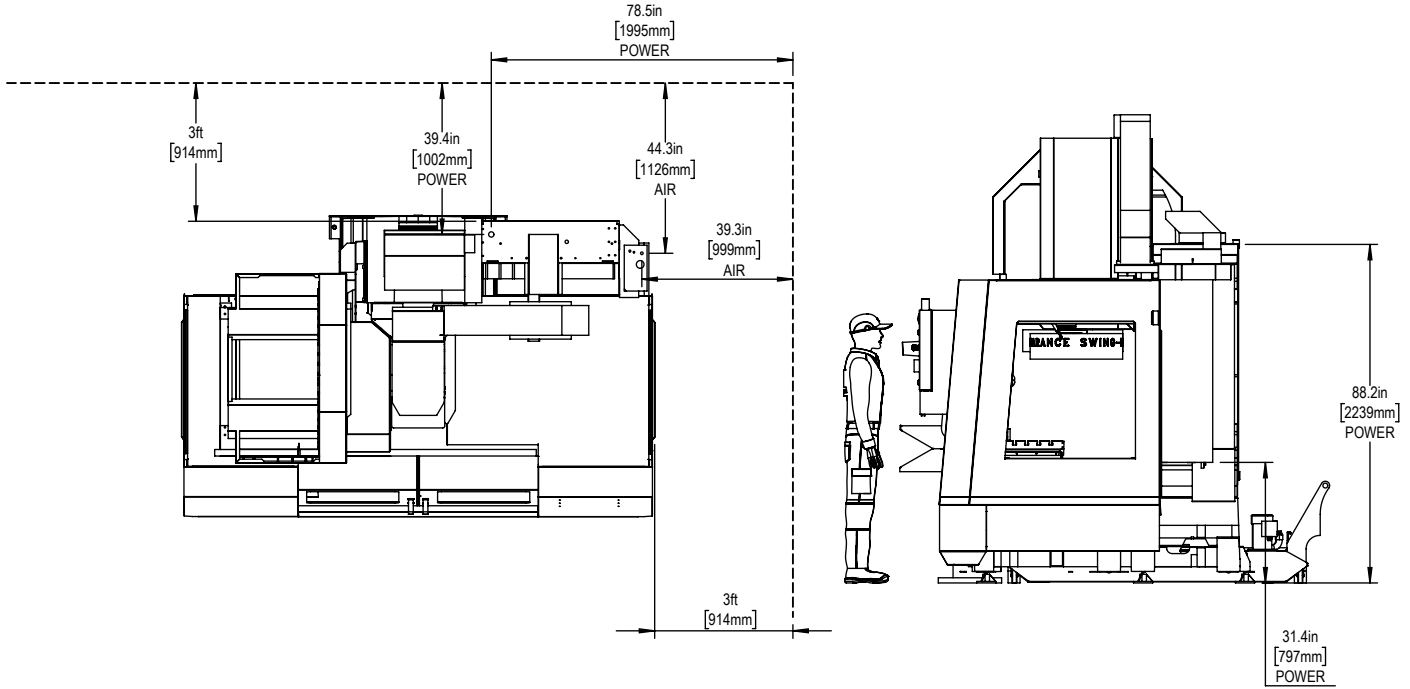


*All Height Dimensions Based on Suggested Leveling Pad Height

Shipping Dimensions

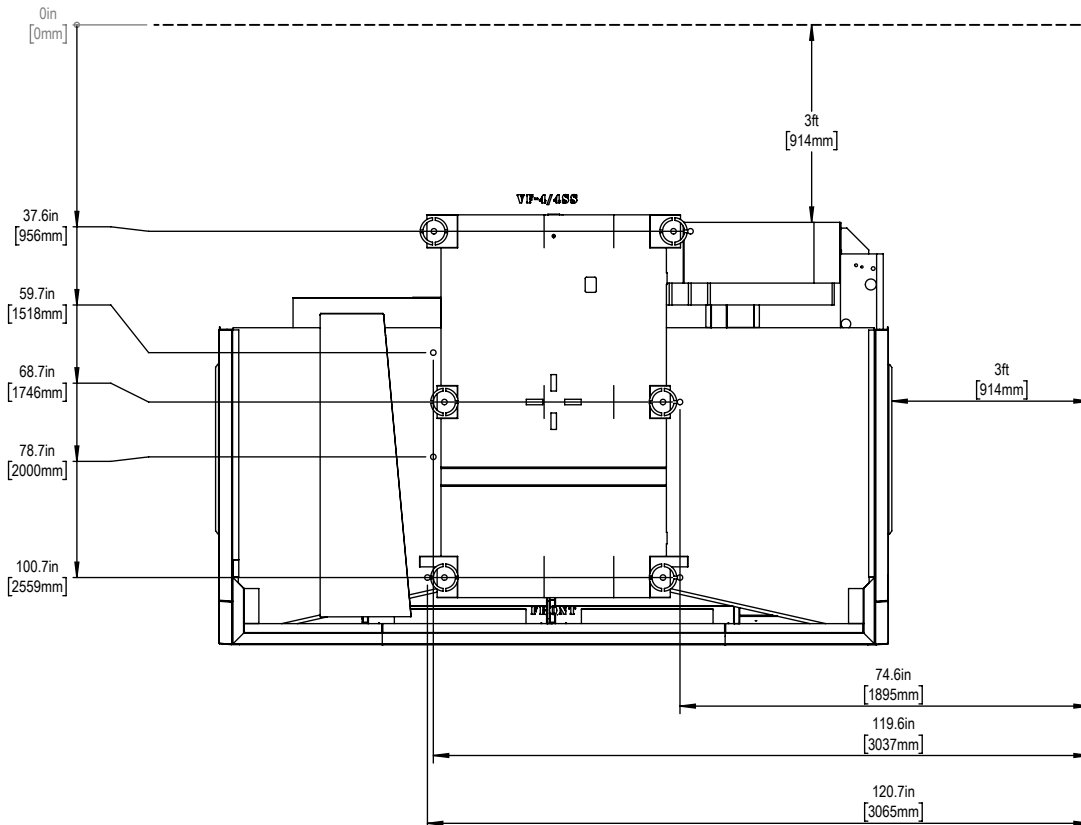


Air & Power



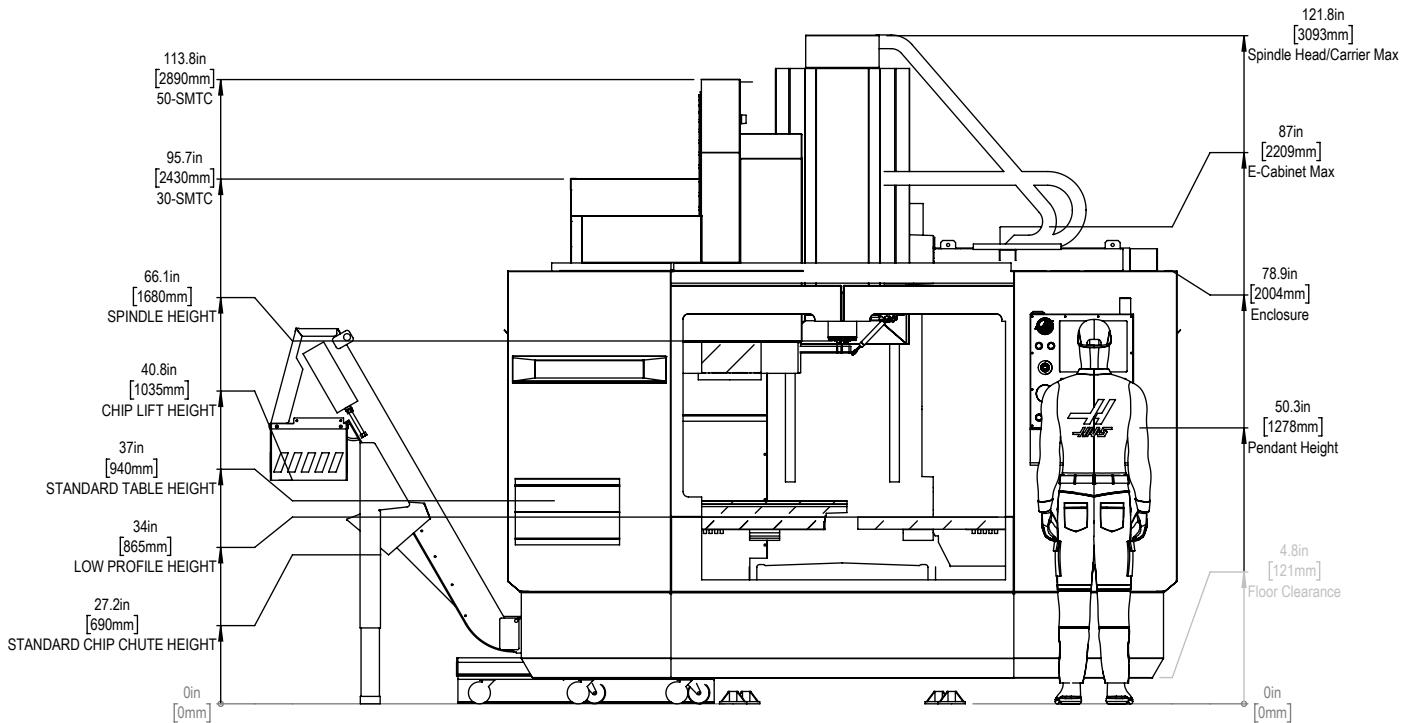
Maintain 3 feet [915mm] clearance to the nearest obstruction around all sides of machine perimeter for maintenance access

Anchor Pattern

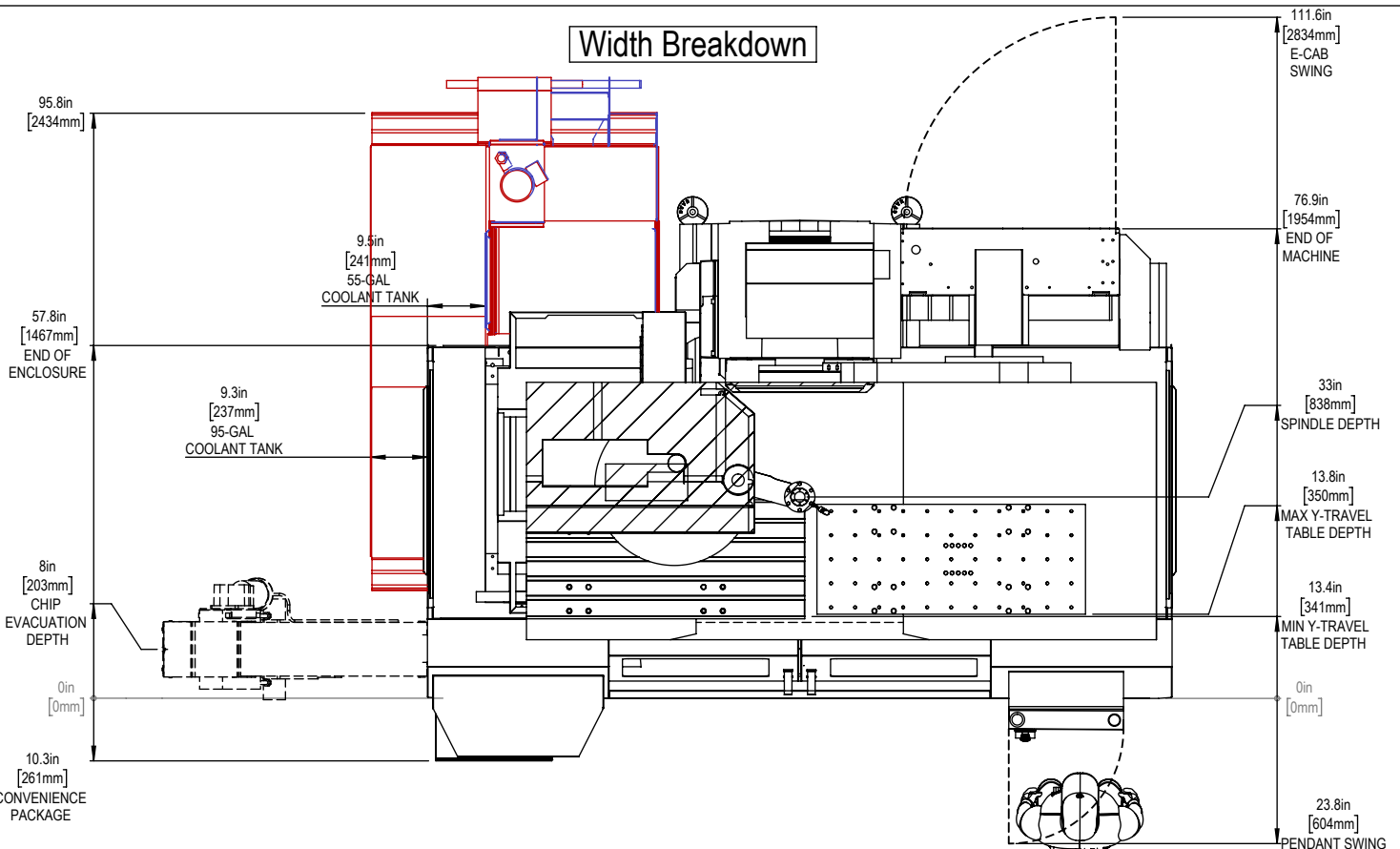


For precise locations please use template in Anchoring Kit found at Haascnc.com

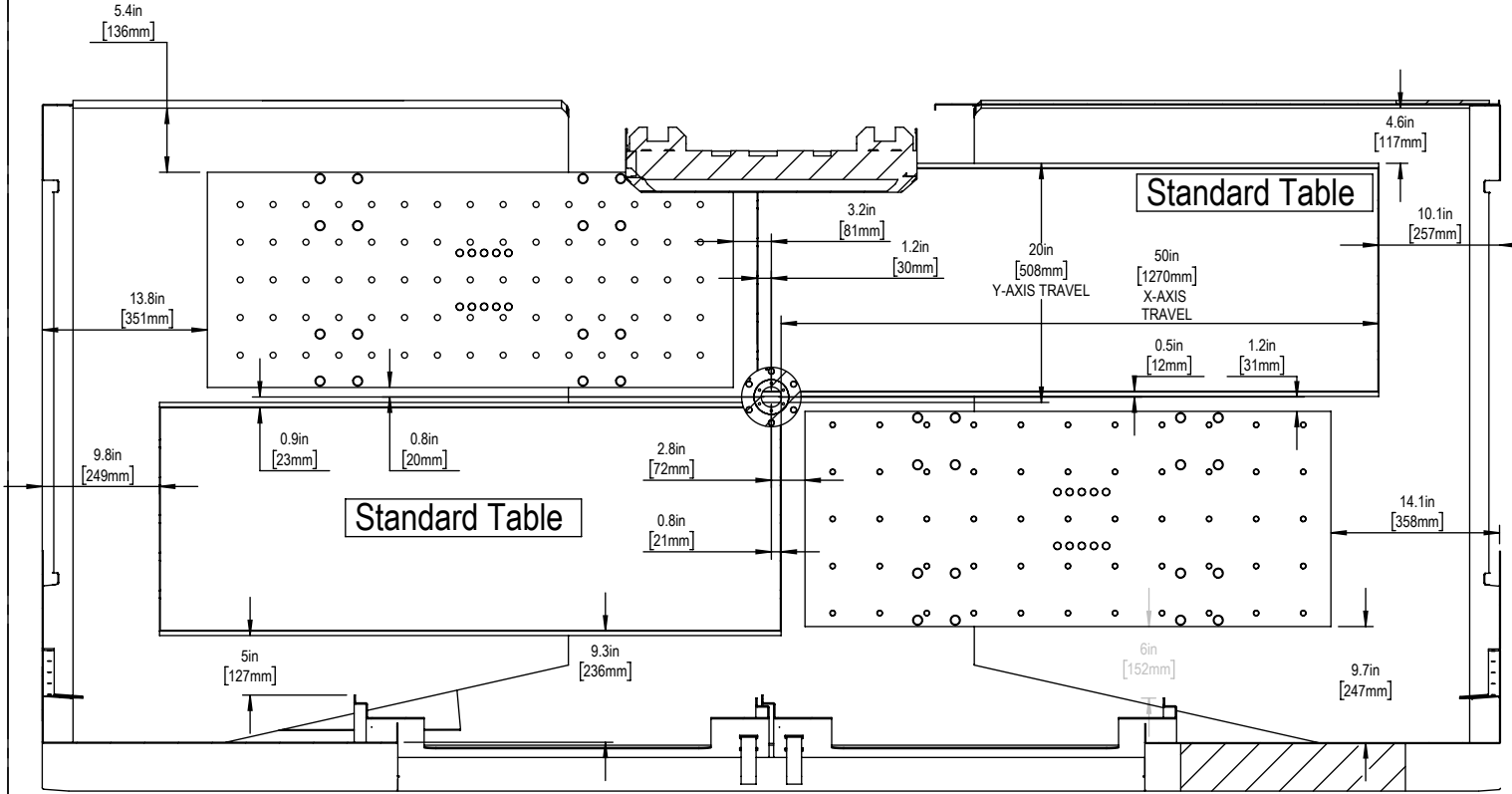
Height Breakdown



Width Breakdown

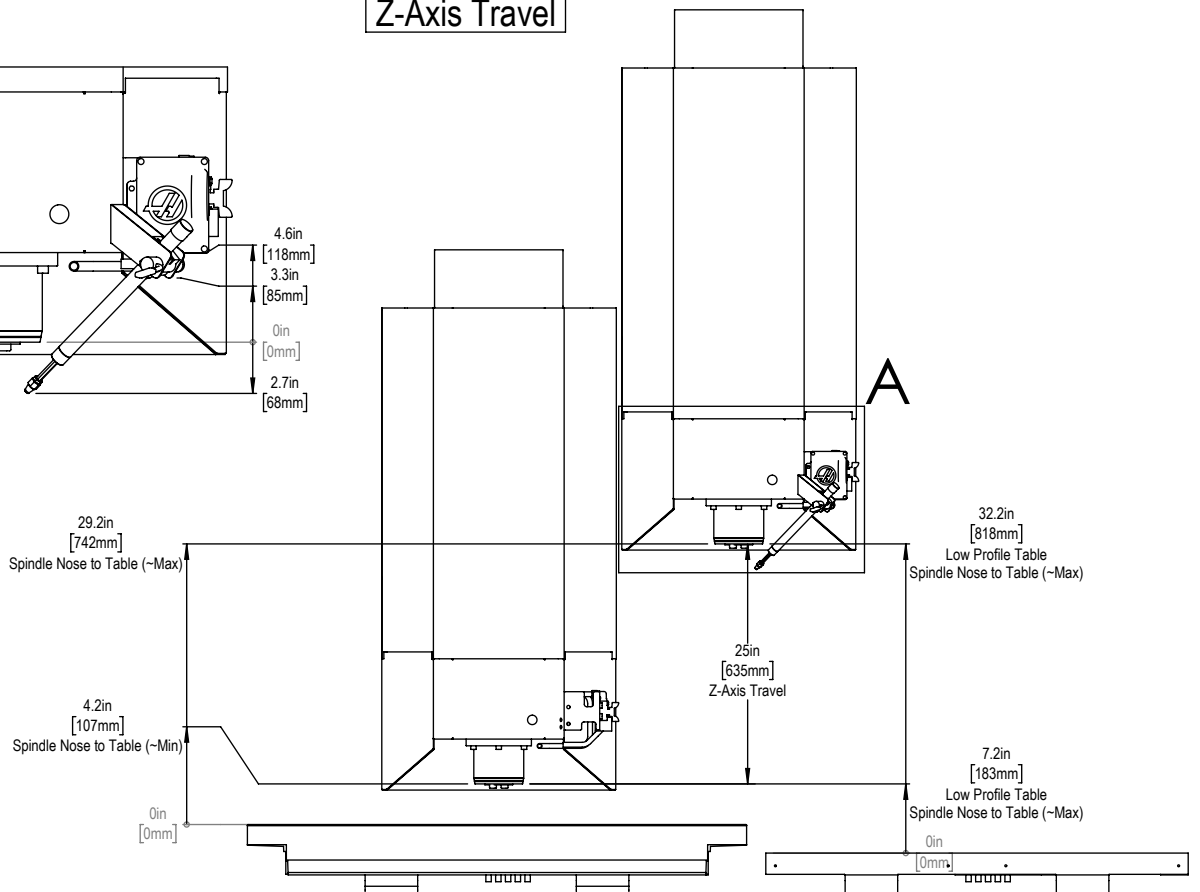


X&Y-Axis Travel



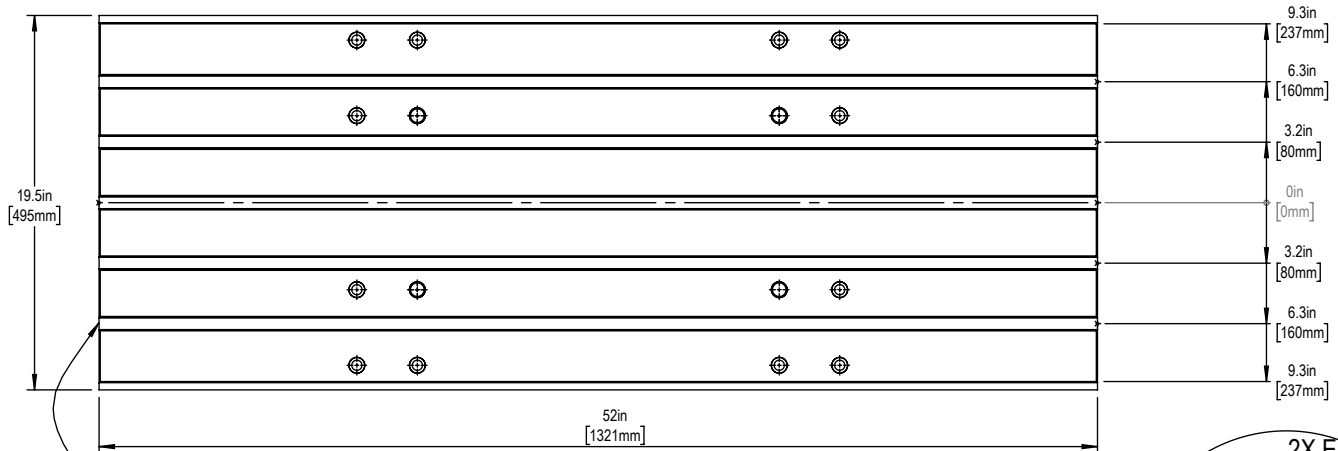
Z-Axis Travel

DETAIL A

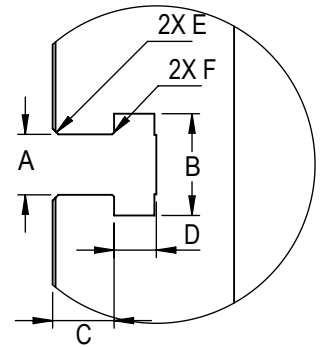




Table



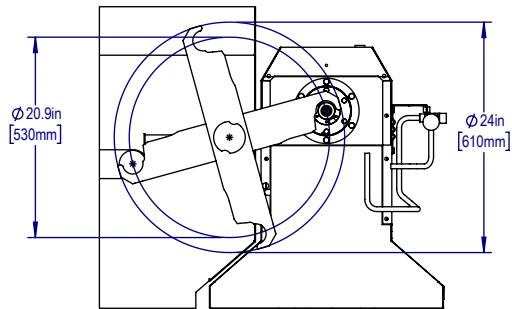
16mm T-Slots



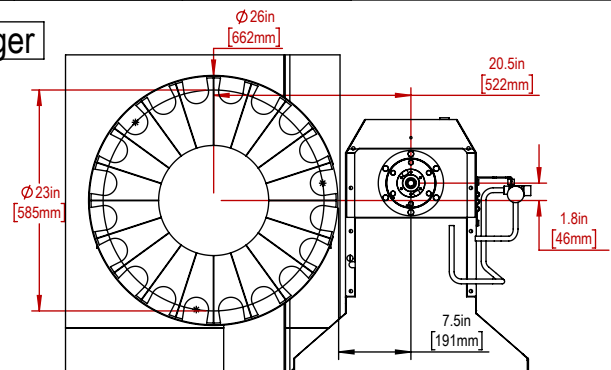
T-Slot Dimensions in inches

Slot Size	A	B	C	D	E	F
12mm	$0.438 \begin{smallmatrix} +.002 \\ -.000 \end{smallmatrix}$	0.76 ± 0.02	0.310 ± 0.010	0.318 ± 0.010	$0.03 \times 45^\circ$	$0.020 \times 45^\circ$
16mm	0.628 ± 0.002	1.06 ± 0.02	0.640 ± 0.010	0.420 ± 0.010	$0.06 \times 45^\circ$	$0.020 \times 45^\circ$

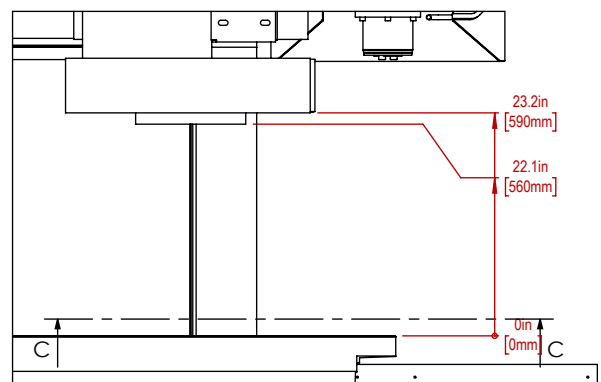
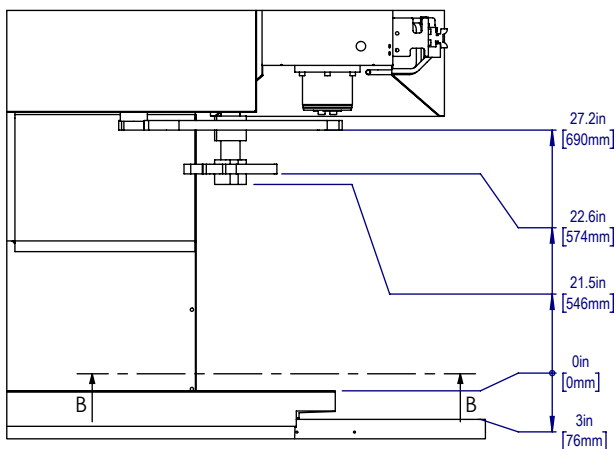
Tool Changer



SECTION B-B
SCALE 1 : 20

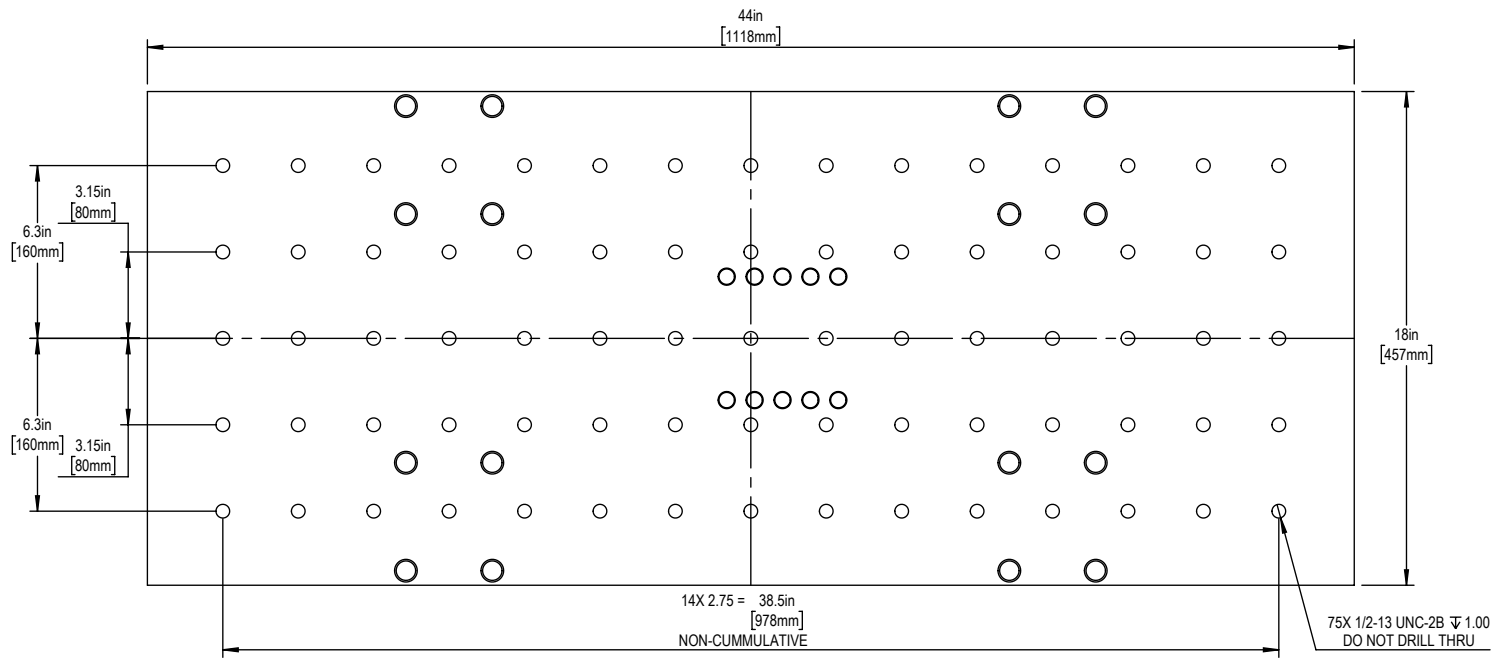


SECTION C-C
SCALE 1 : 20





3" Extended Z-Axis Clearance



76mm Extended Z-Axis Clearance

