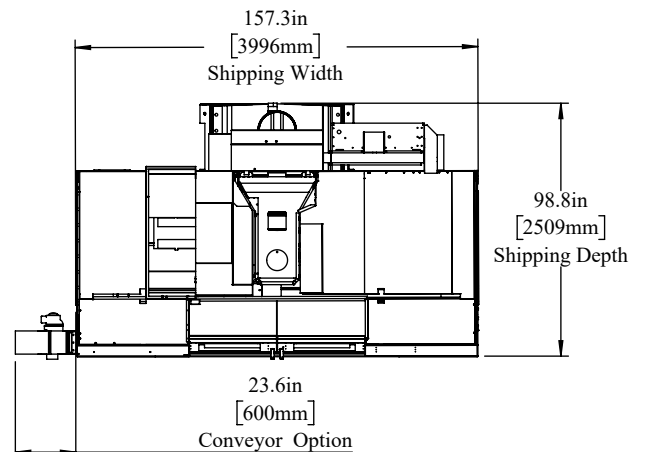
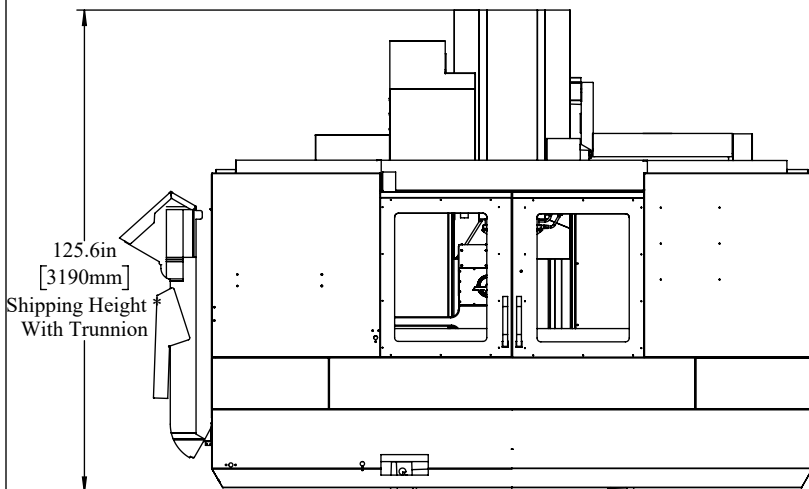
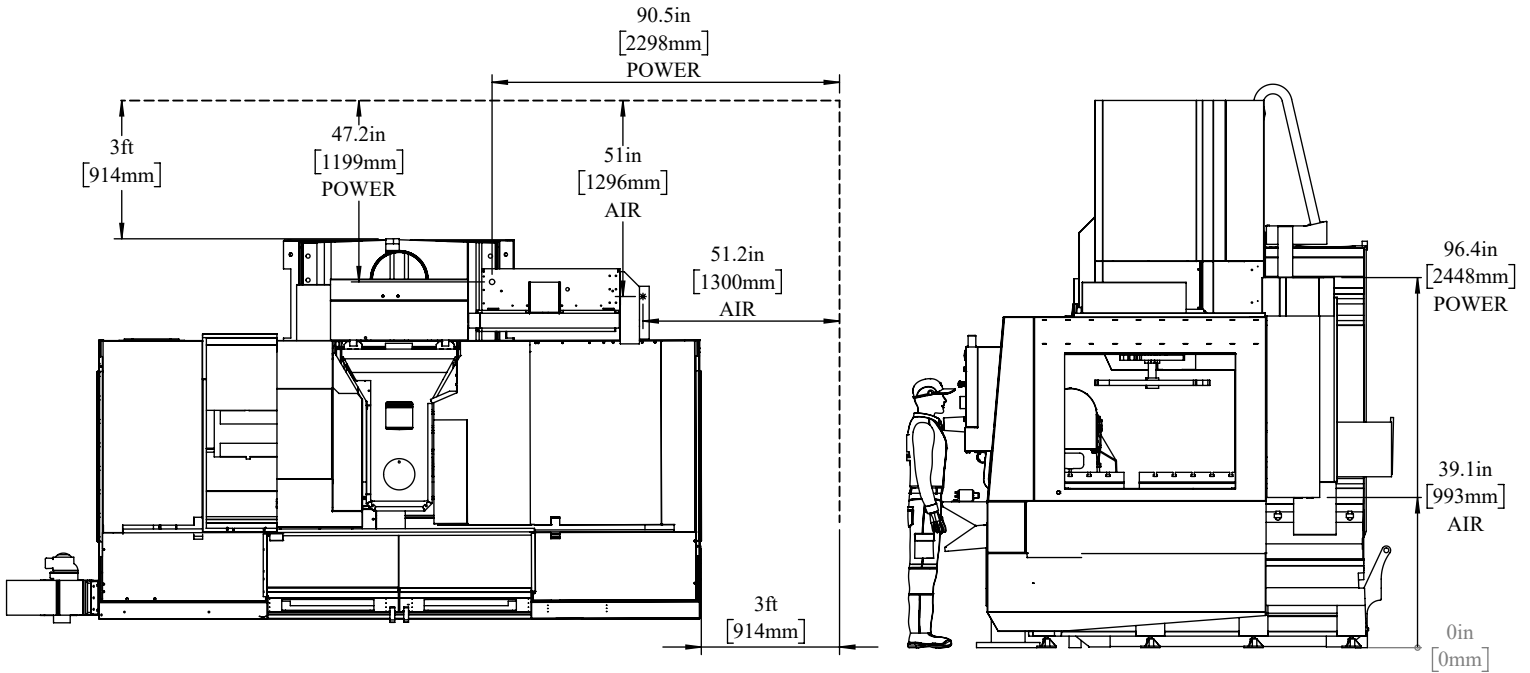


*Add 8in for Extended Z-Clearance

Shipping Dimensions



Air & Power



Maintain 3 feet [915mm] clearance to the nearest obstruction around all sides of machine perimeter for maintenance access

Note:

Machine must be placed on one continous concrete slab. Slab should extend 12in [305mm] beyond anchor holes in all directions

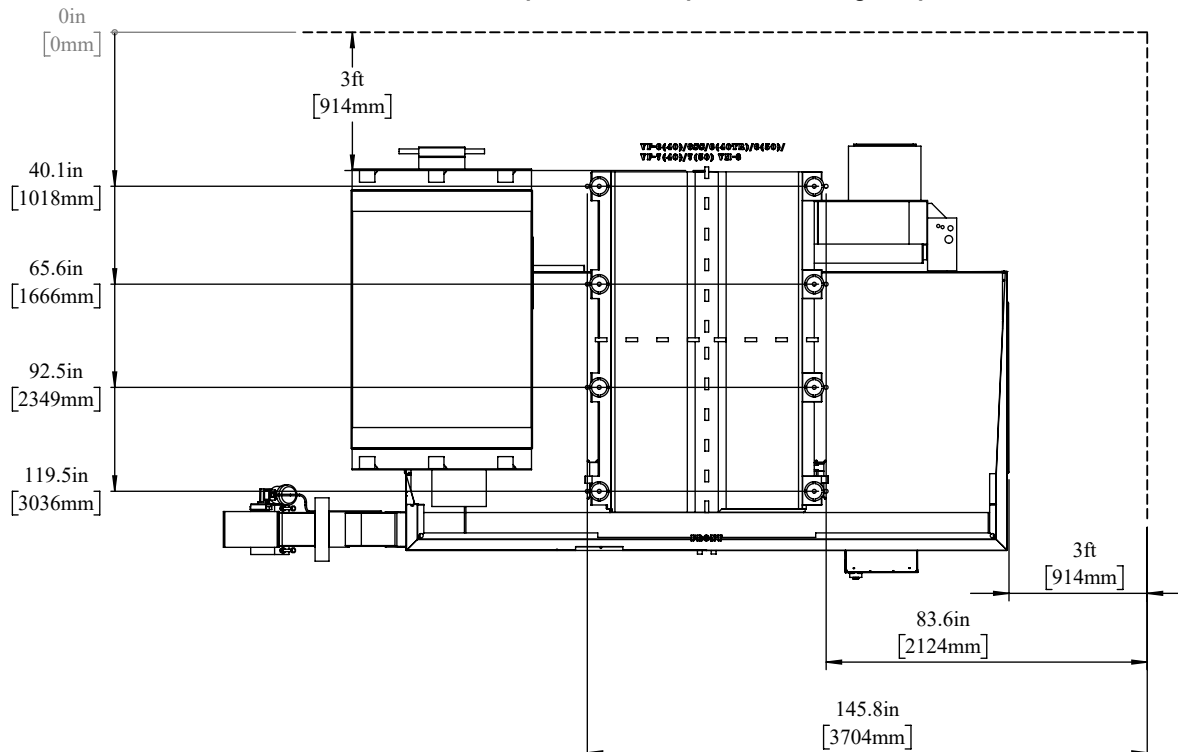
Anchor Pattern

For machines built before Sept. 2023.

Anchor Hole Detail

Ø 1.0in [25mm]
▽ 3.5in [90mm]

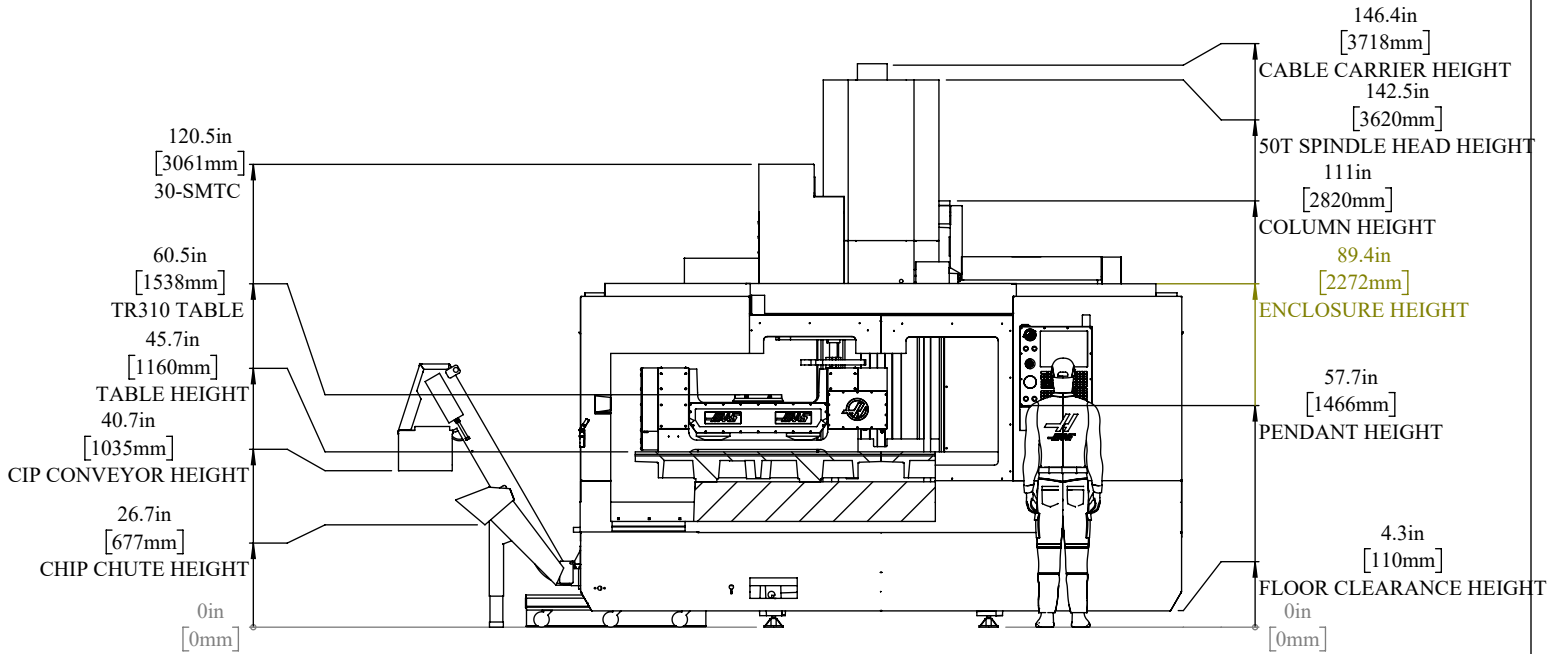
NOTE: For machines built after Sept. 2023, see separate Anchoring Template.



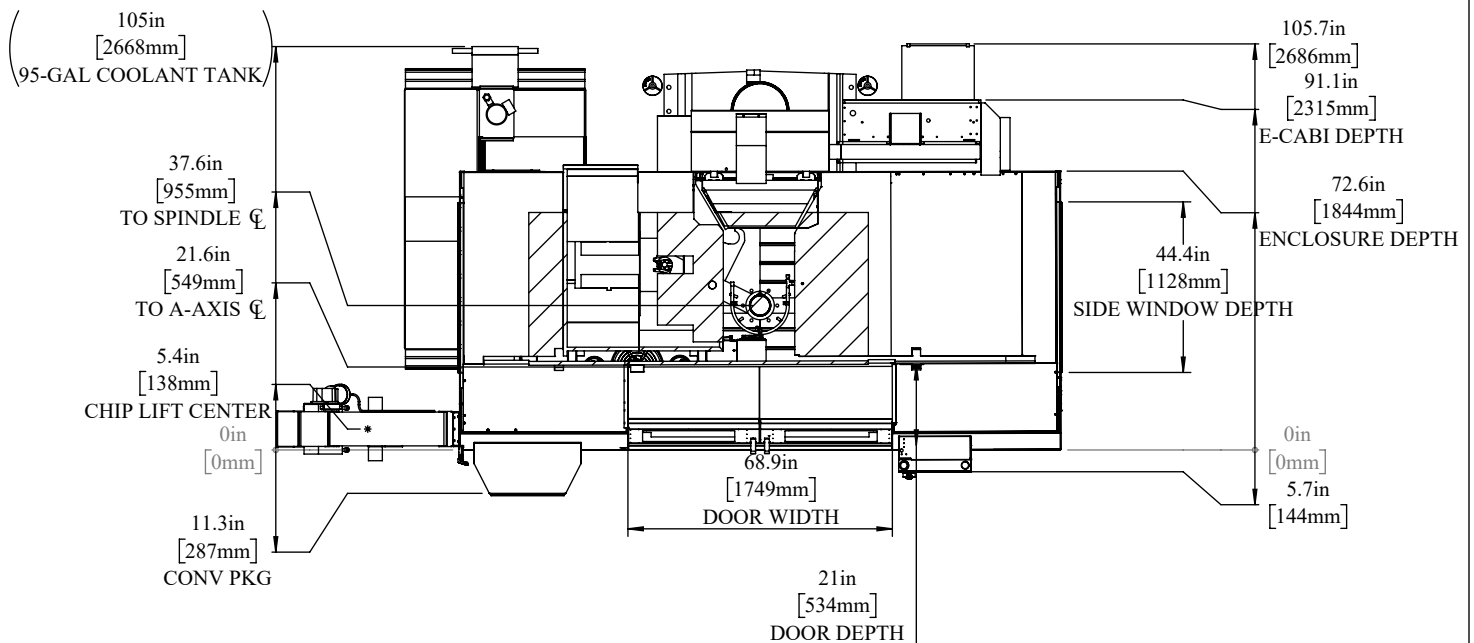
For precise locations and specifications please use template in Anchoring Kit found at Haascnc.com



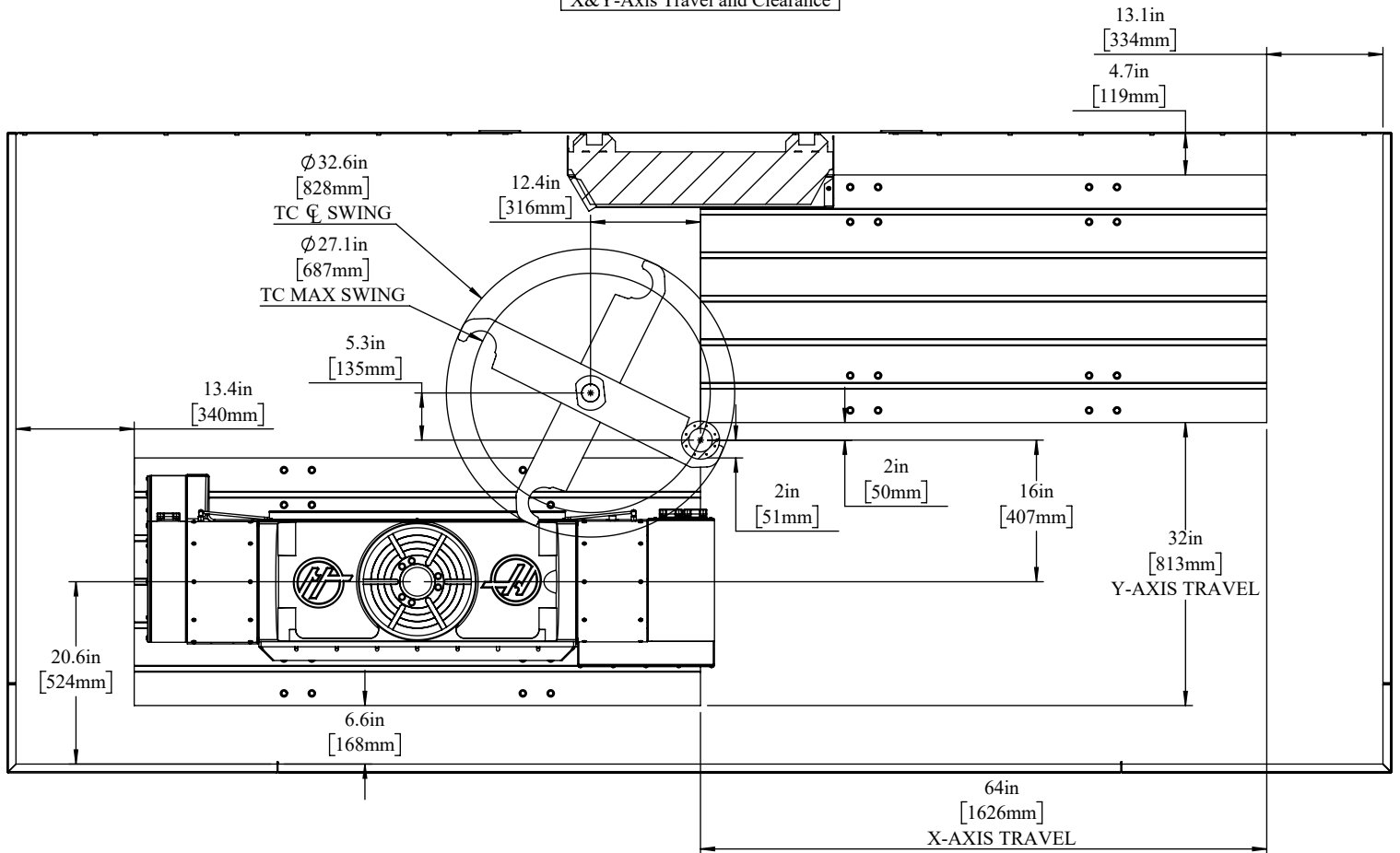
Height Breakdown



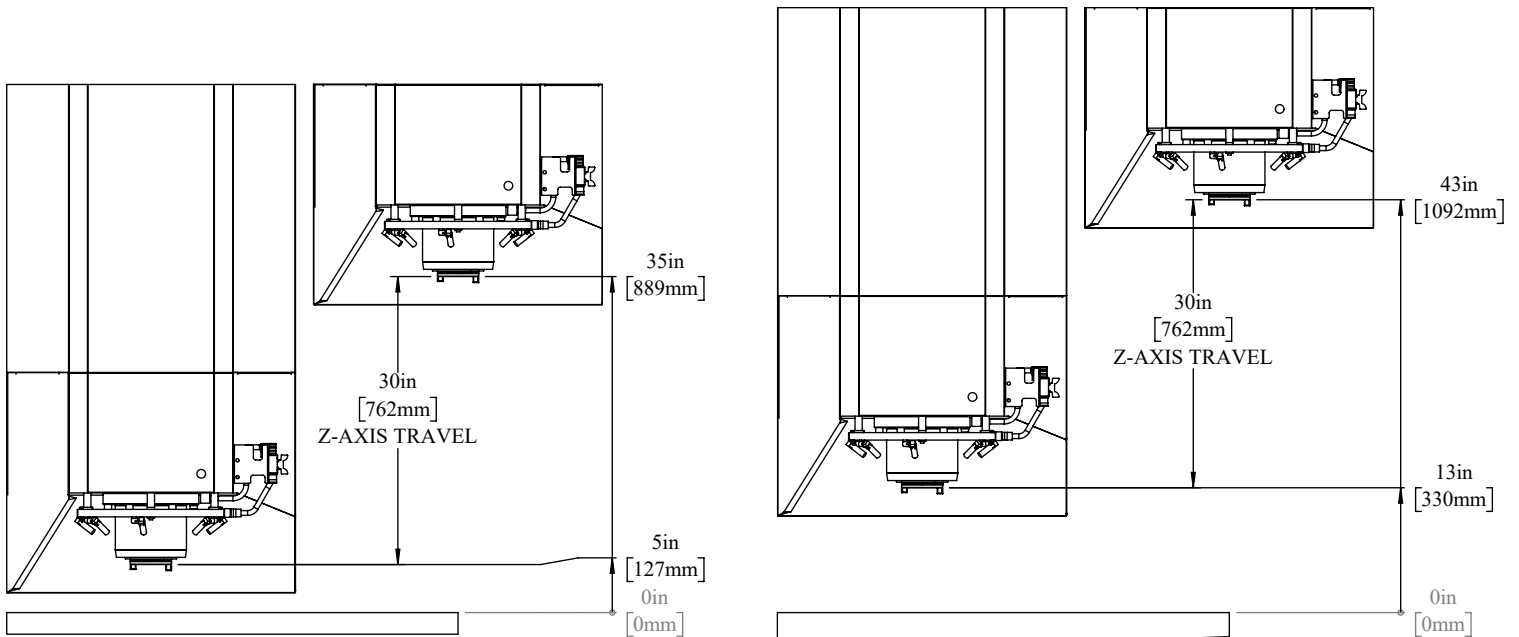
Width Breakdown



X&Y-Axis Travel and Clearance



Z-AXIS TRAVEL & CLEARANCE



Table

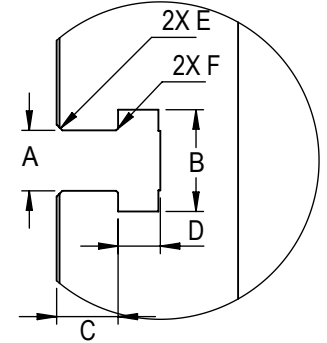
64in
[1626mm]

9.84in
[250mm]
4.92in
[125mm]
0in
[0mm]
4.92in
[125mm]
9.84in
[250mm]

28in
[711mm]

16mm T-SLOTS

Slot Size	A	B	C	D	E	F
12mm	0.438 ^{+0.002} / _{-0.000}	0.76 ± 0.02	0.310 ± 0.010	0.318 ± 0.010	0.03x45°	0.020x45°
16mm	0.628 ± 0.002	1.06 ± 0.02	0.640 ± 0.010	0.420 ± 0.010	0.06x45°	0.020x45°



T-Slot Dimensions in inches

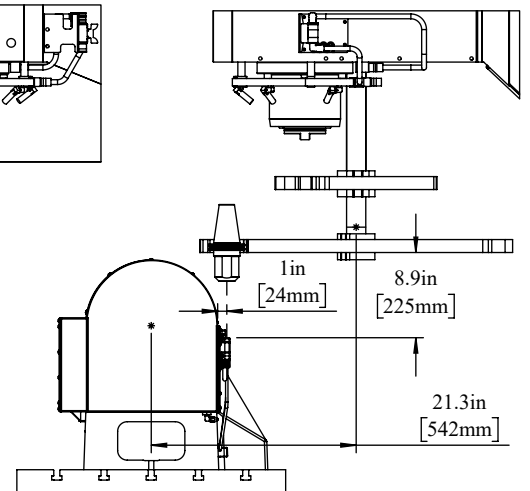
Tool Changer

32in
[813mm]

19.7in
[501mm]

29.2in
[741mm]
30-SMTC ARM
TOP SWING
22.6in
[575mm]
30-SMTC
BOTTOM SWING
21.9in
[556mm]
30-SMTC ARM LOWEST
CENTER HEIGHT
0in
[0mm]

FOR ADDITIONAL INFORMATION ON TR310
PLEASE REFER TO THE MLD FOUND ON
HAASCNC.COM



CAUTION WHEN PERFORMING TOOL CHANGES