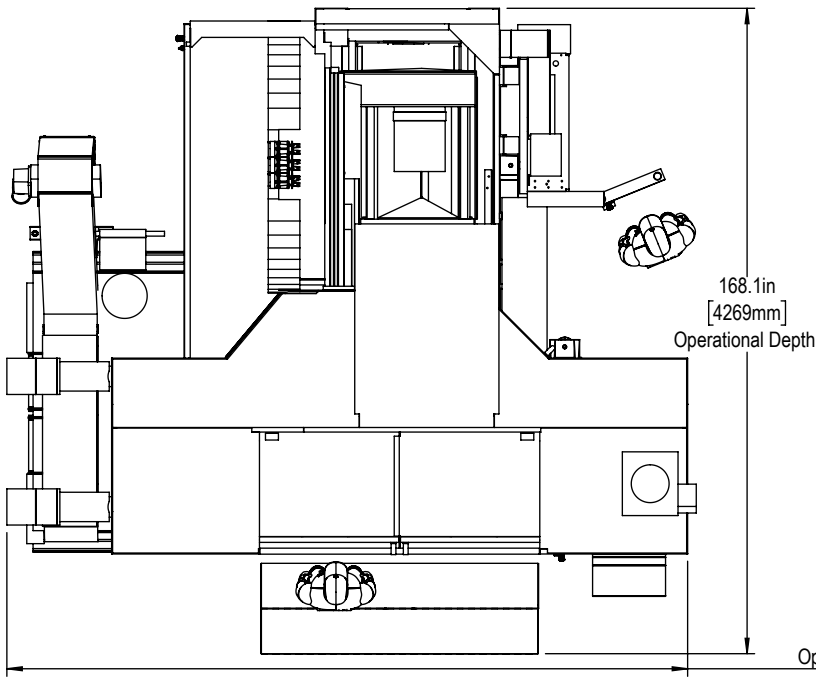
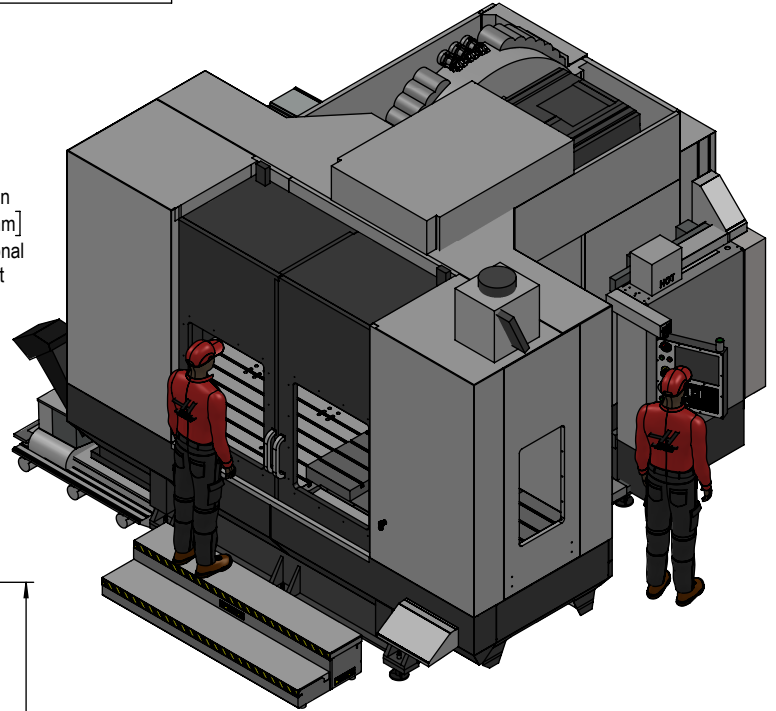
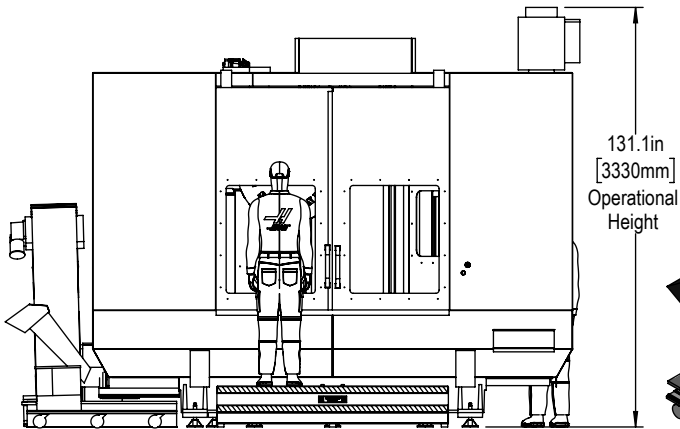
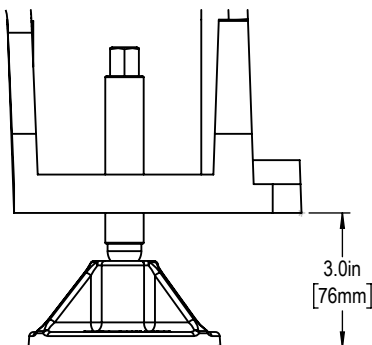


Installed Dimensions

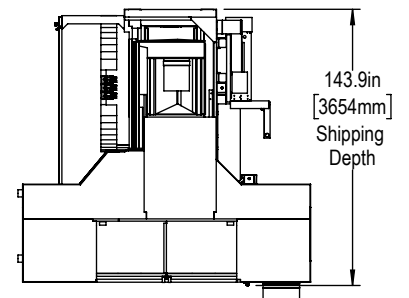
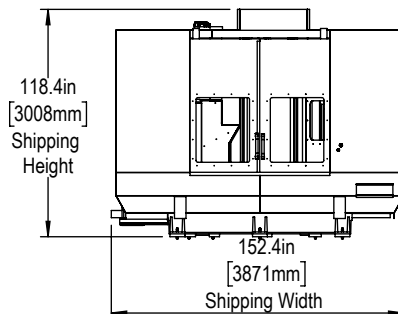


177.3in  
[4503mm]  
Operational Width

Leveling Pad Height

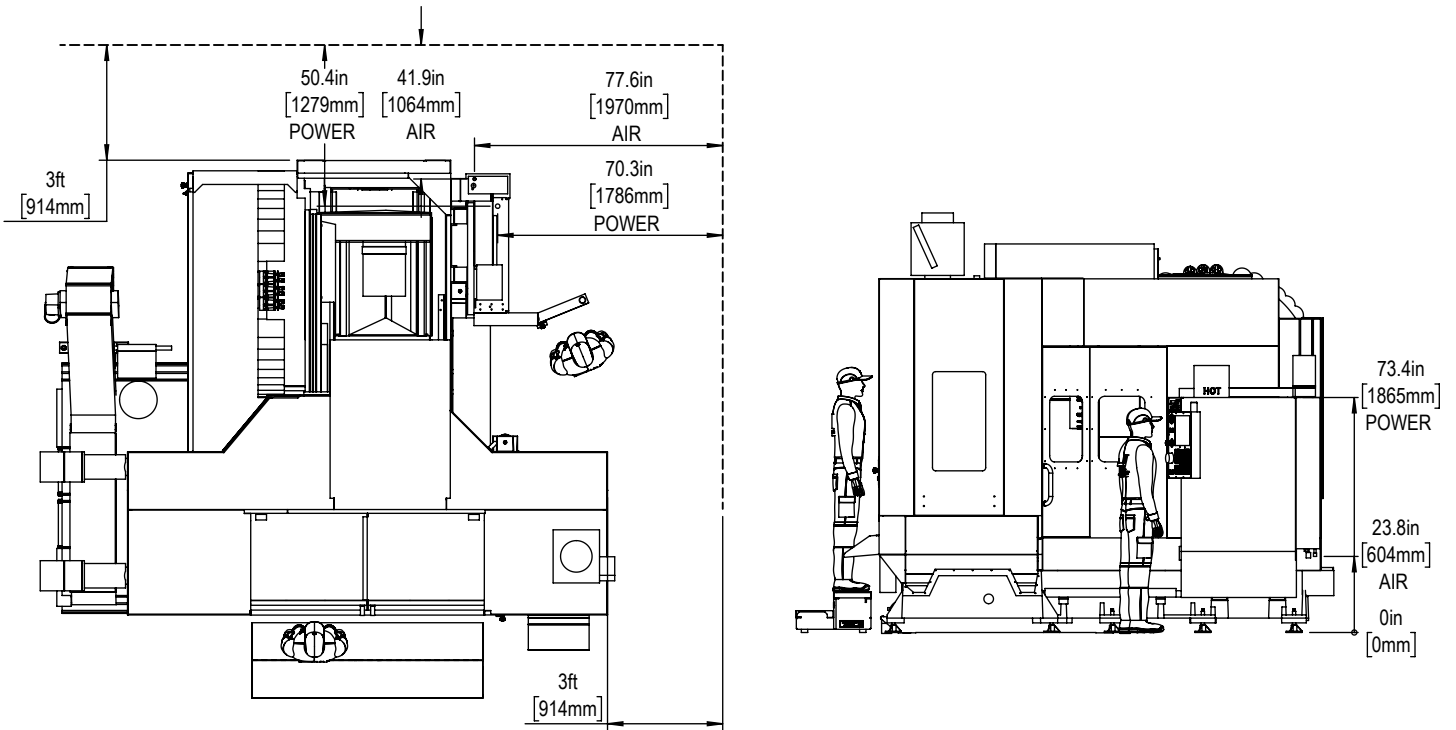


Shipping Dimensions

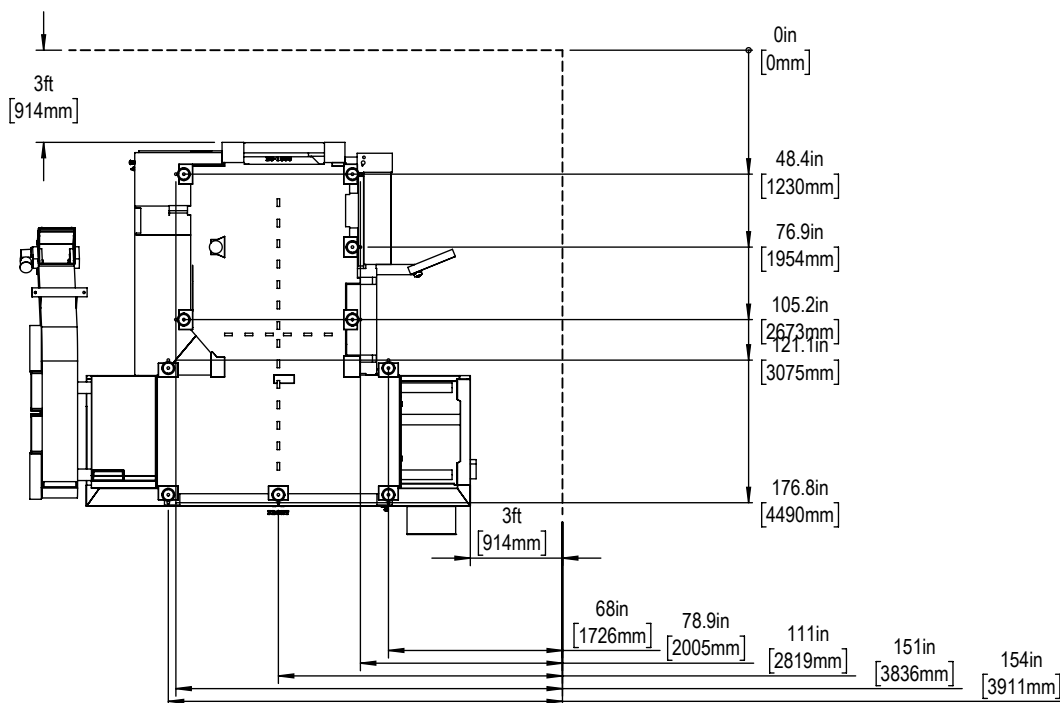


\*All Height Dimensions Based on Suggested Leveling Pad Height

Air & Power



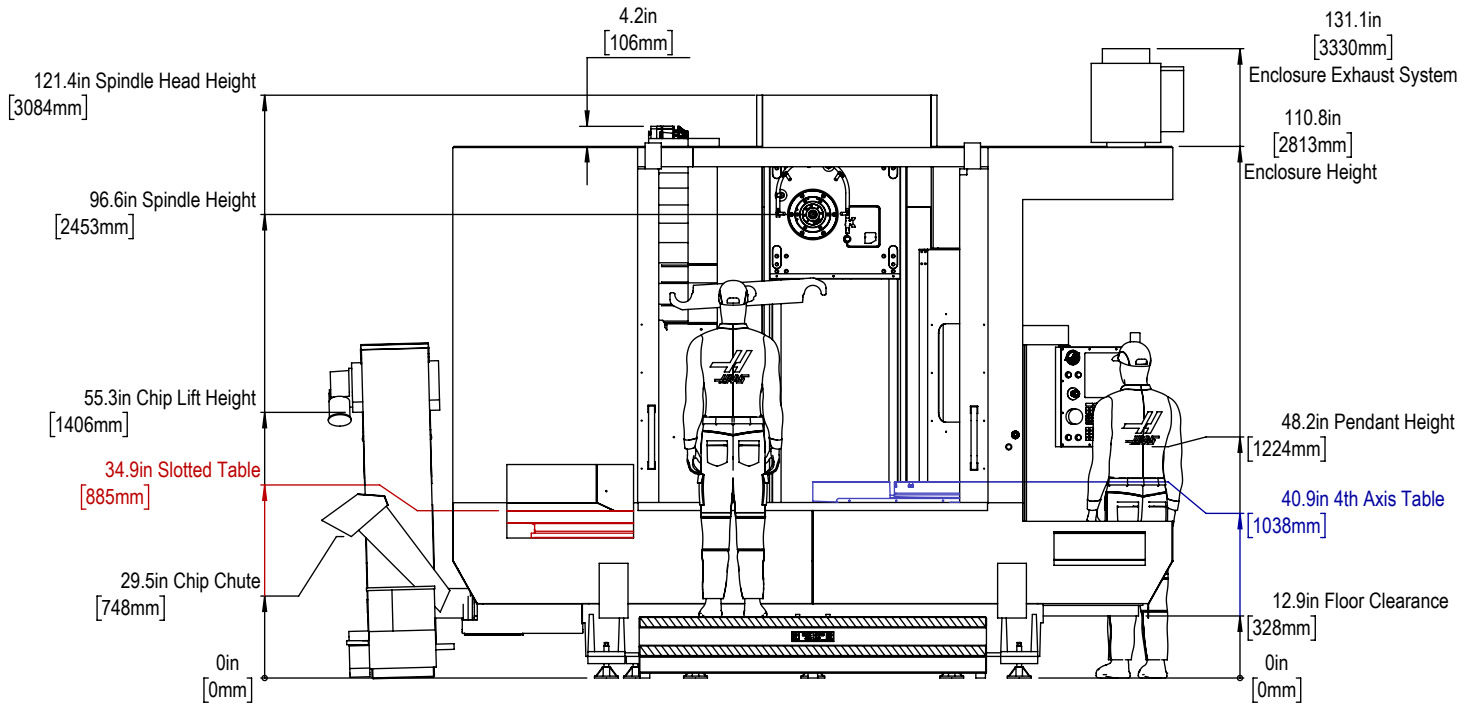
Anchor Pattern



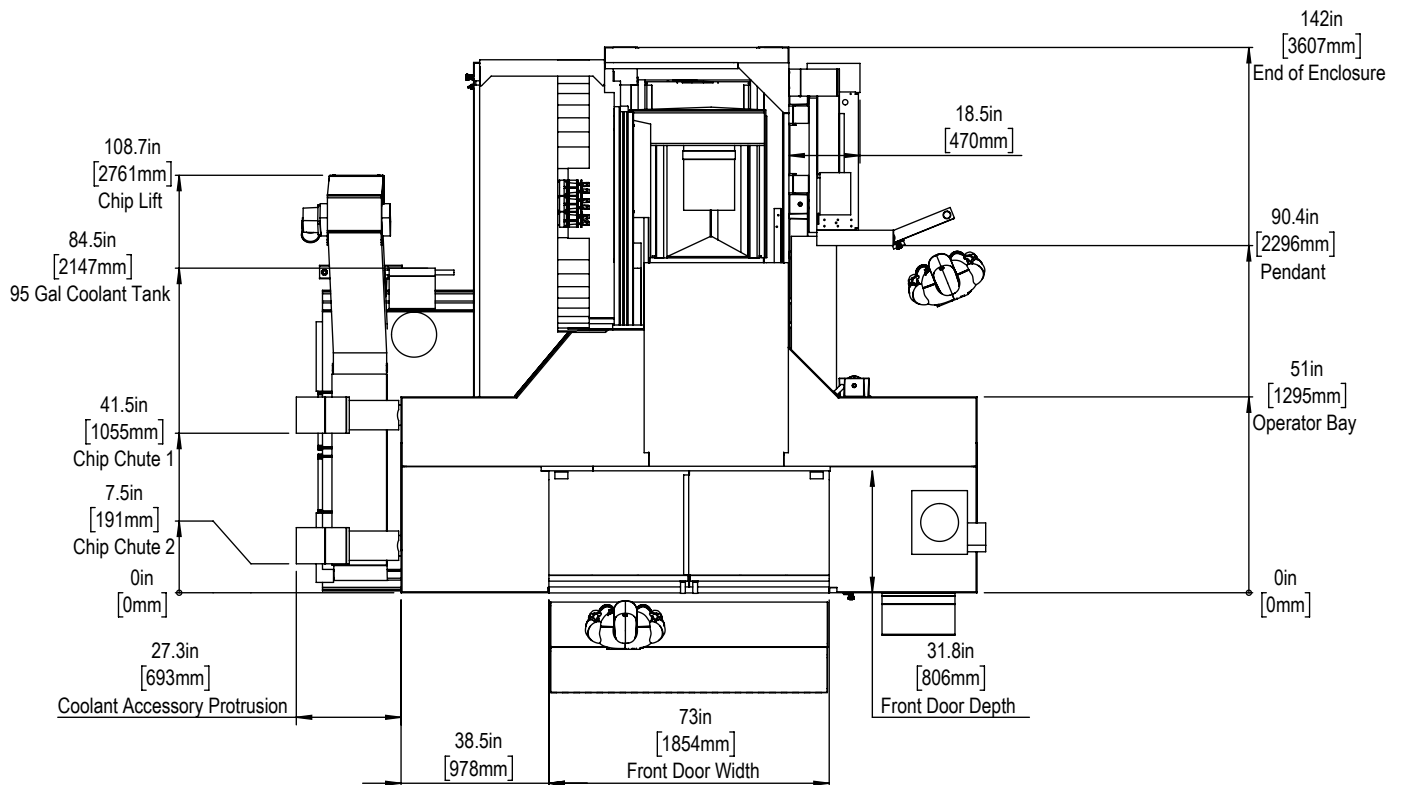
For precise locations, please use template in the machine's Anchoring Kit found at [Haascnc.com](http://Haascnc.com)



Height Breakdown

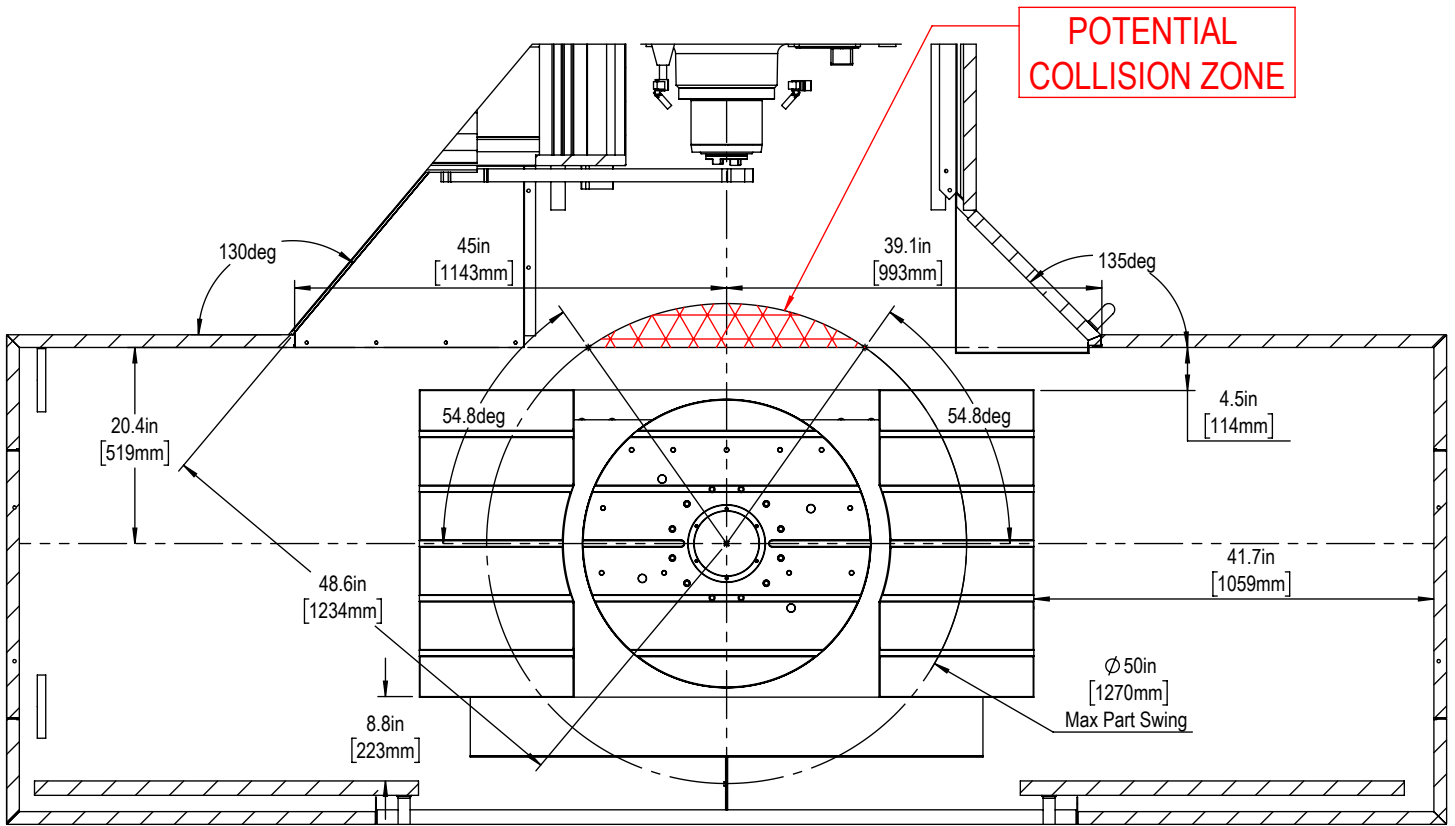


Width Breakdown

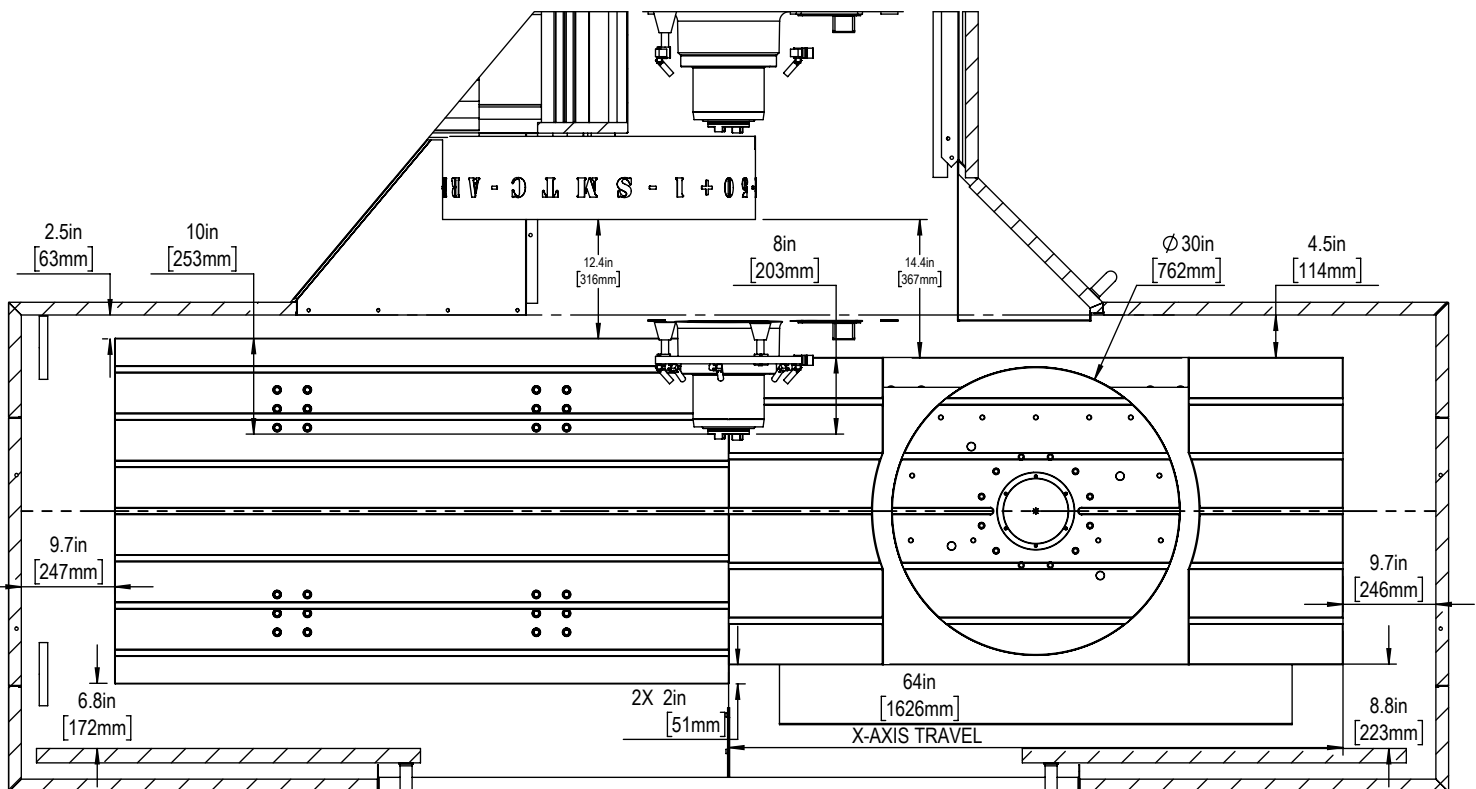


Maintain 3 feet [915mm] clearance to the nearest obstruction around all sides of machine perimeter for maintenance access

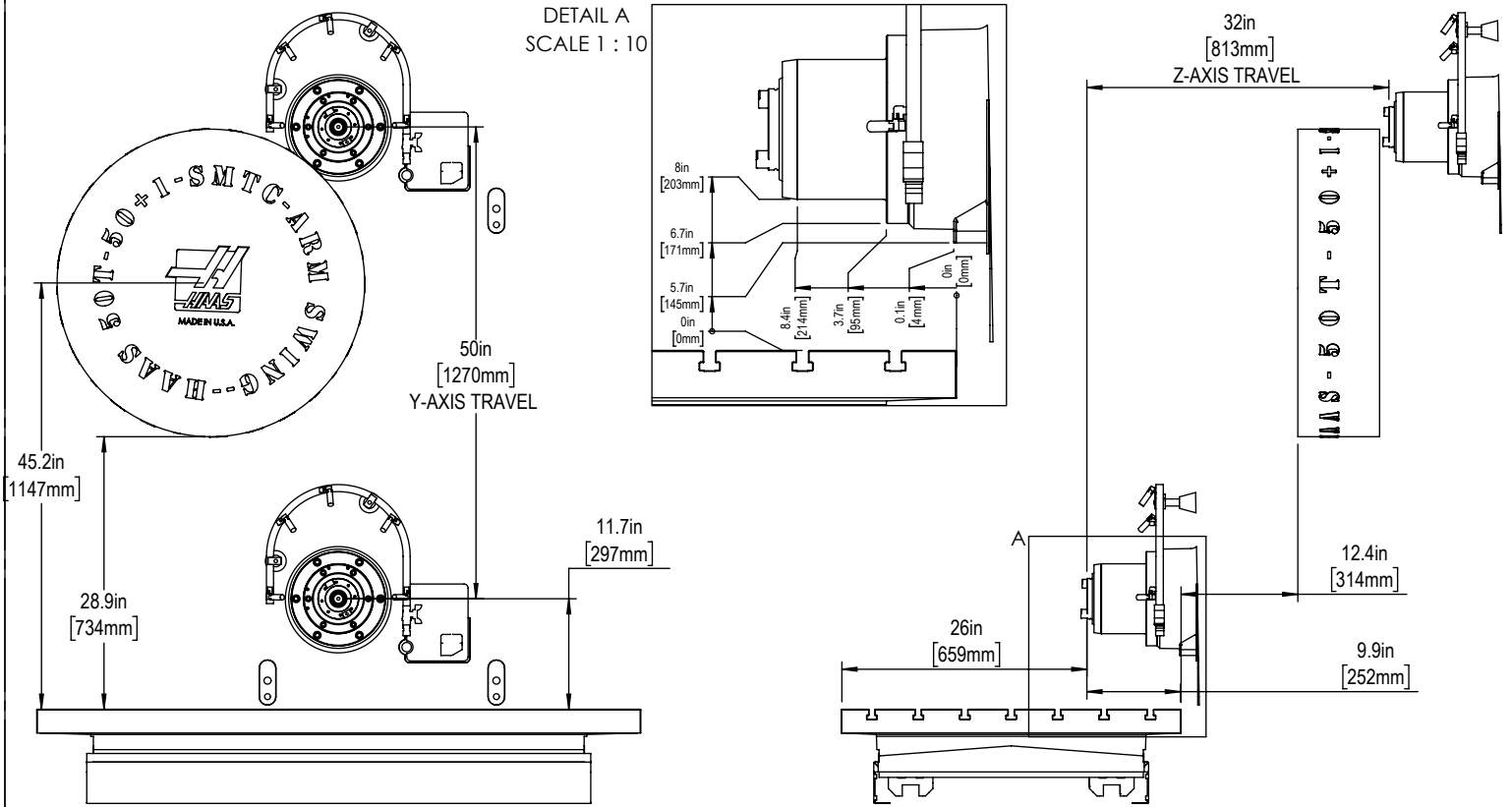
Max Part Swings



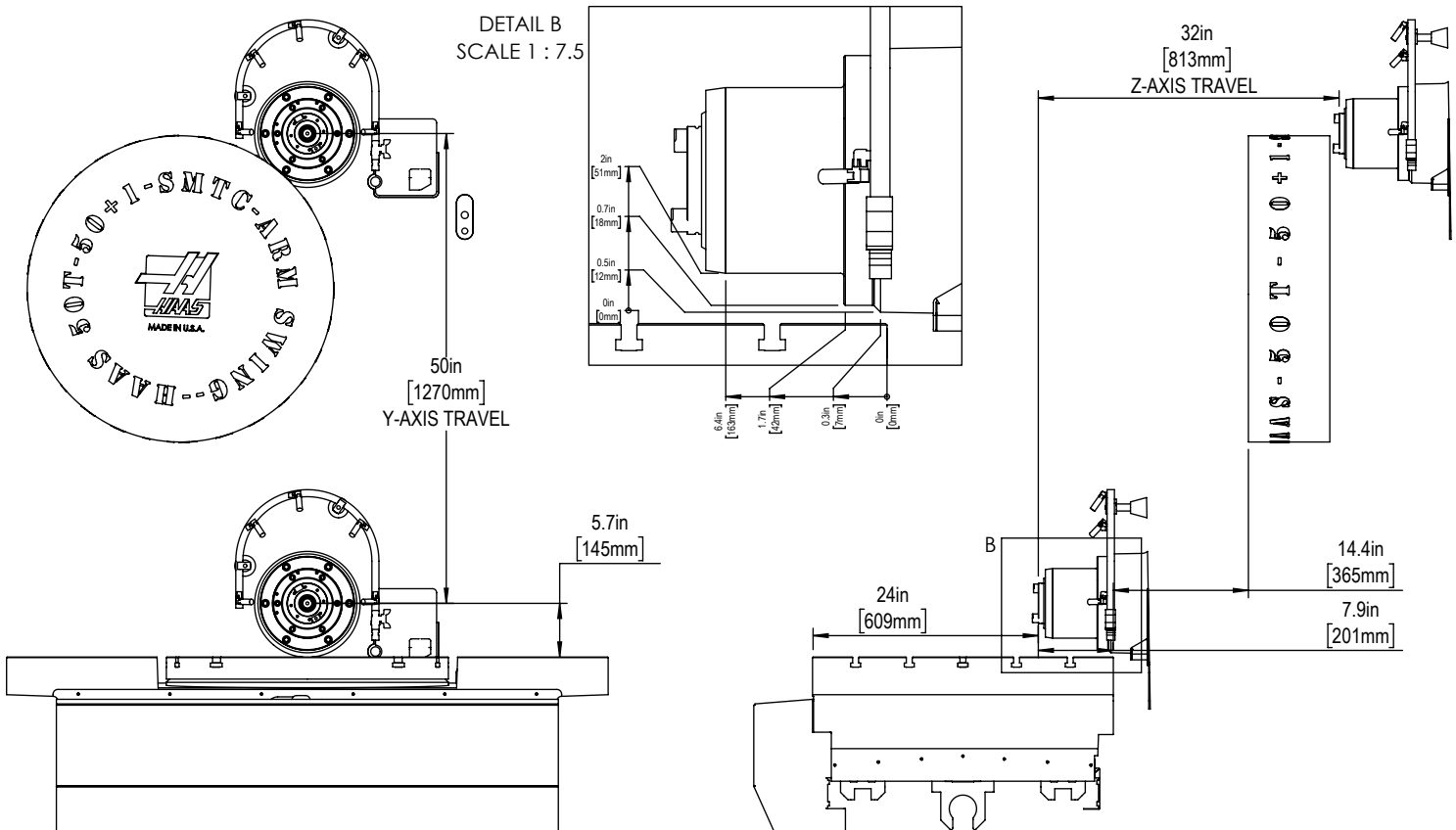
B-Axis Collision Zones



Standard Slotted Table Y-Axis Travel

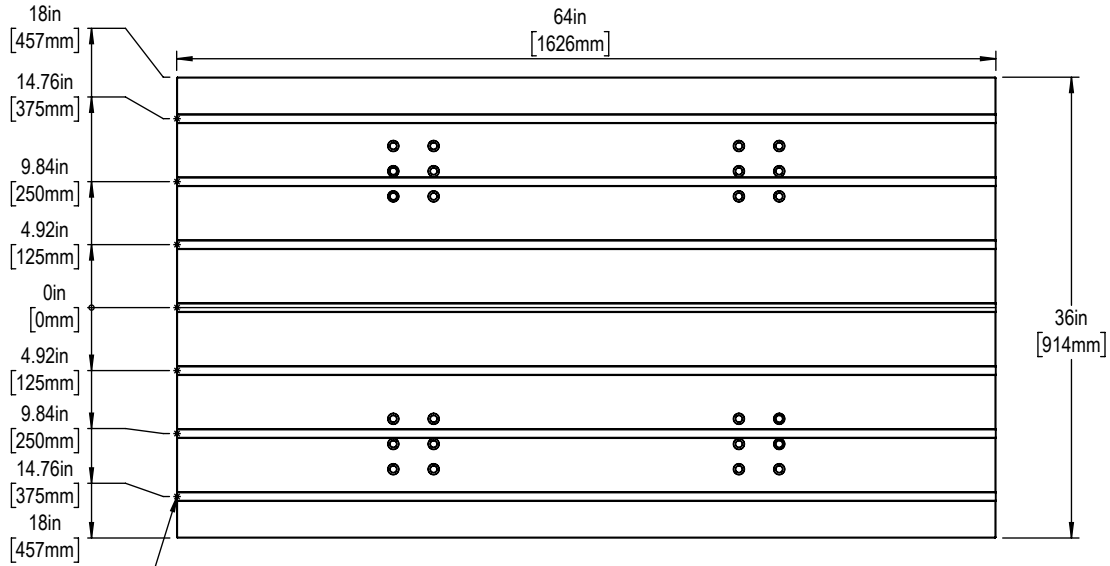


4th Axis Platter Table Y-Axis Travel

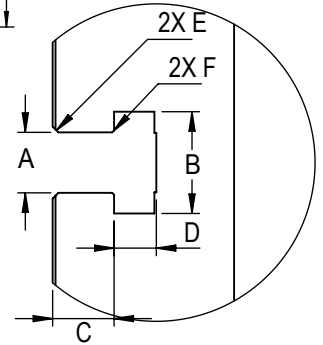




**Table**



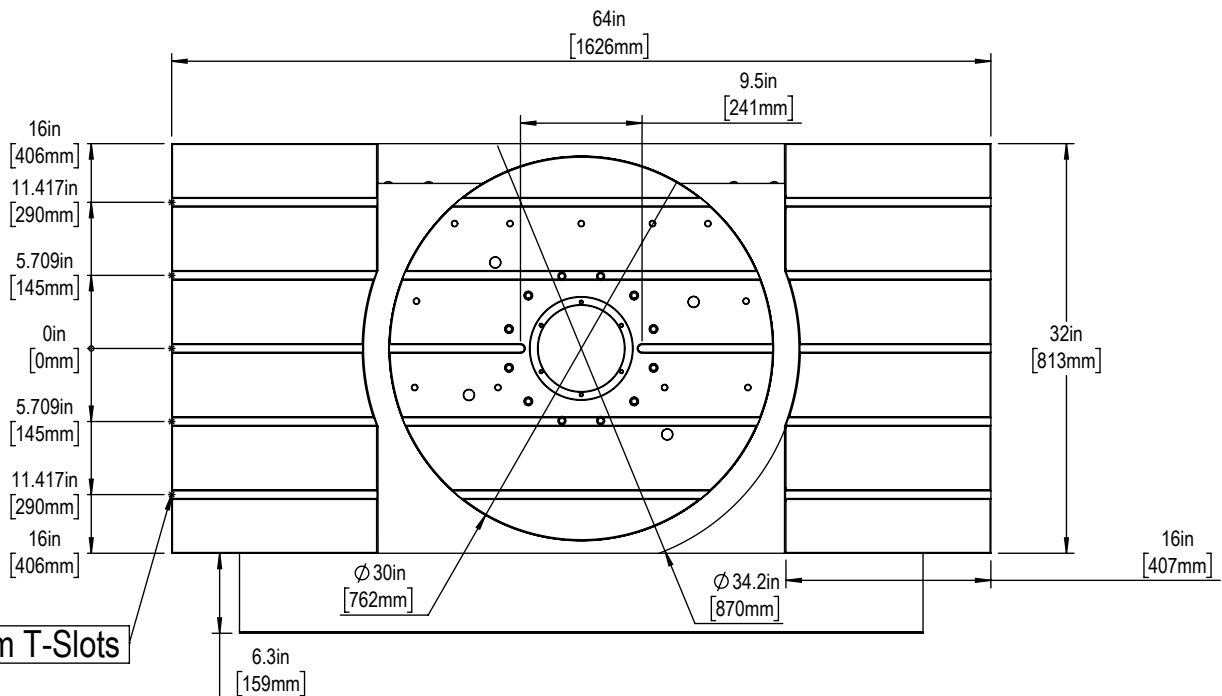
16-mm T-Slots



Slot Size	A	B	C	D	E	F
11mm	$0.438 \begin{smallmatrix} +.002 \\ -.000 \end{smallmatrix}$	$0.76 \pm 0.02$	$0.310 \pm 0.010$	$0.318 \pm 0.010$	$0.03 \times 45^\circ$	$0.020 \times 45^\circ$
16mm	$0.628 \pm 0.002$	$1.06 \pm 0.02$	$0.640 \pm 0.010$	$0.420 \pm 0.010$	$0.06 \times 45^\circ$	$0.020 \times 45^\circ$

T-Slot Dimensions in inches

**Tool Changer**



16-mm T-Slots