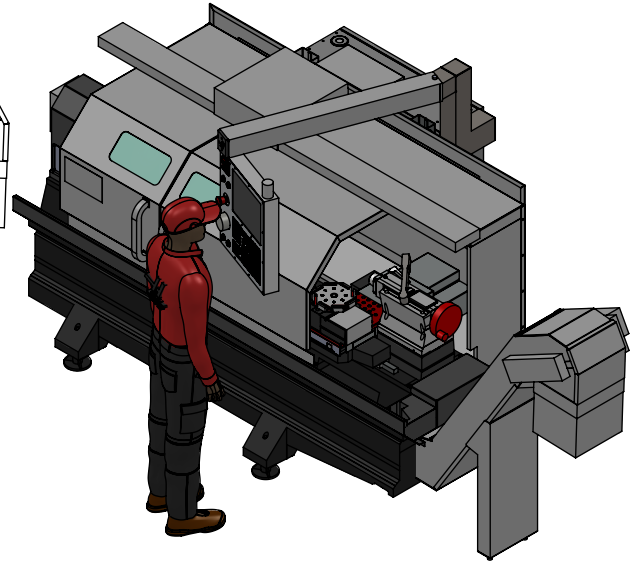
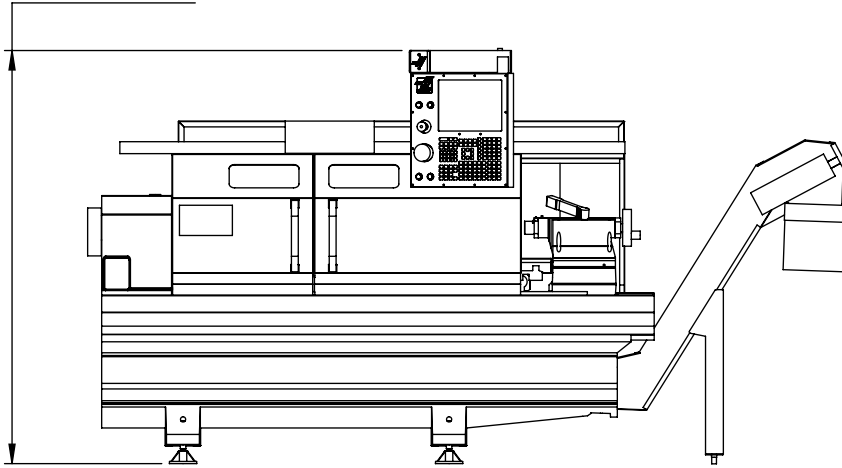


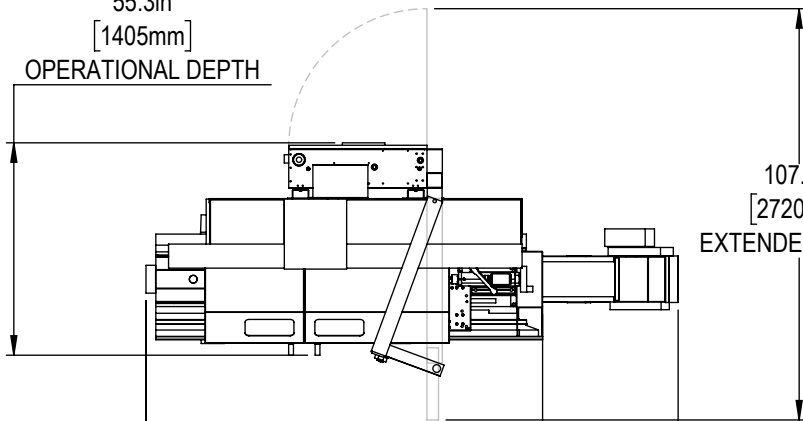


Installed Dimensions

75.3in
[1913mm]
OPERATIONAL
HEIGHT



55.3in
[1405mm]
OPERATIONAL
DEPTH

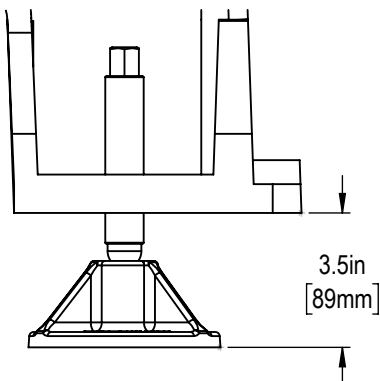


107.1in
[2720mm]
EXTENDED DEPTH

103.3in
[2623mm]
OPERATIONAL DEPTH

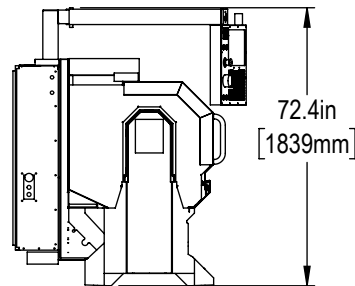
138.6in
[3520mm]
CHIP CHUTE
OPERATIONAL WIDTH

Leveling Pad Height

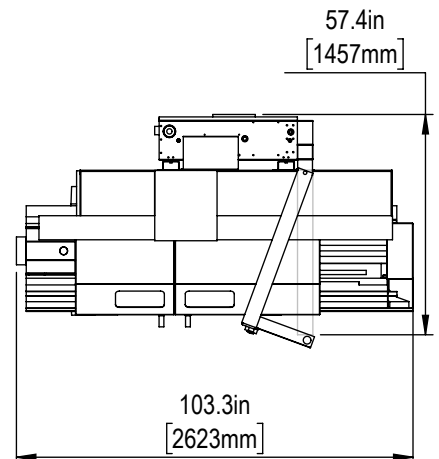


3.5in
[89mm]

Shipping Dimensions



72.4in
[1839mm]

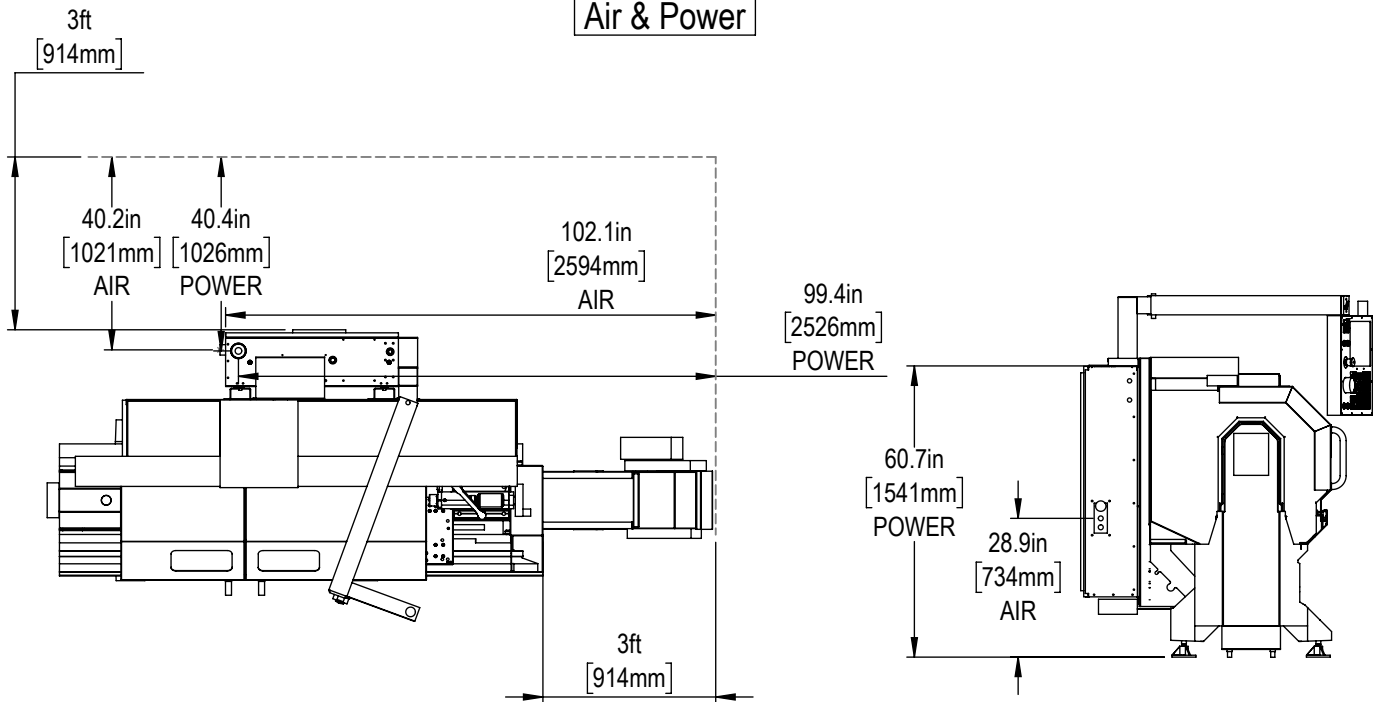


57.4in
[1457mm]

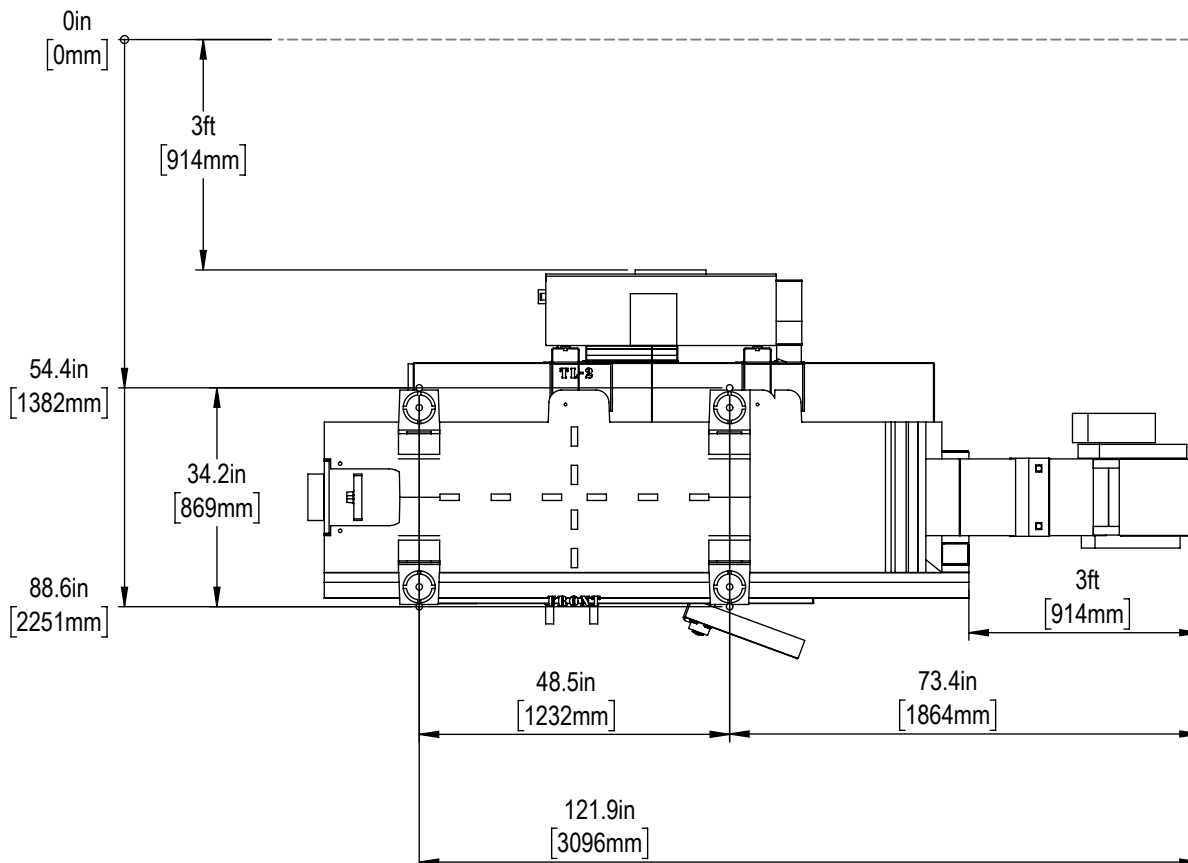
103.3in
[2623mm]

*All Height Dimensions Based on Suggested Leveling Pad Height

Air & Power

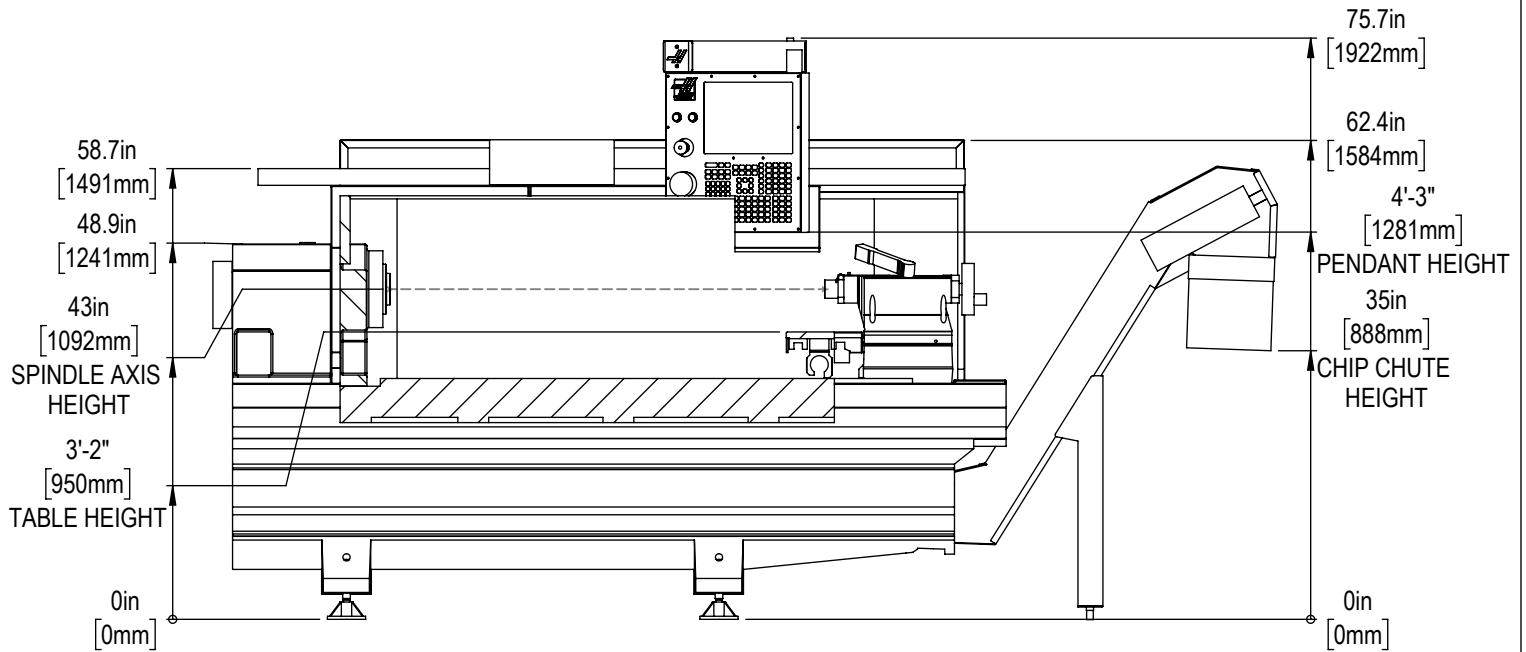


Anchor Pattern

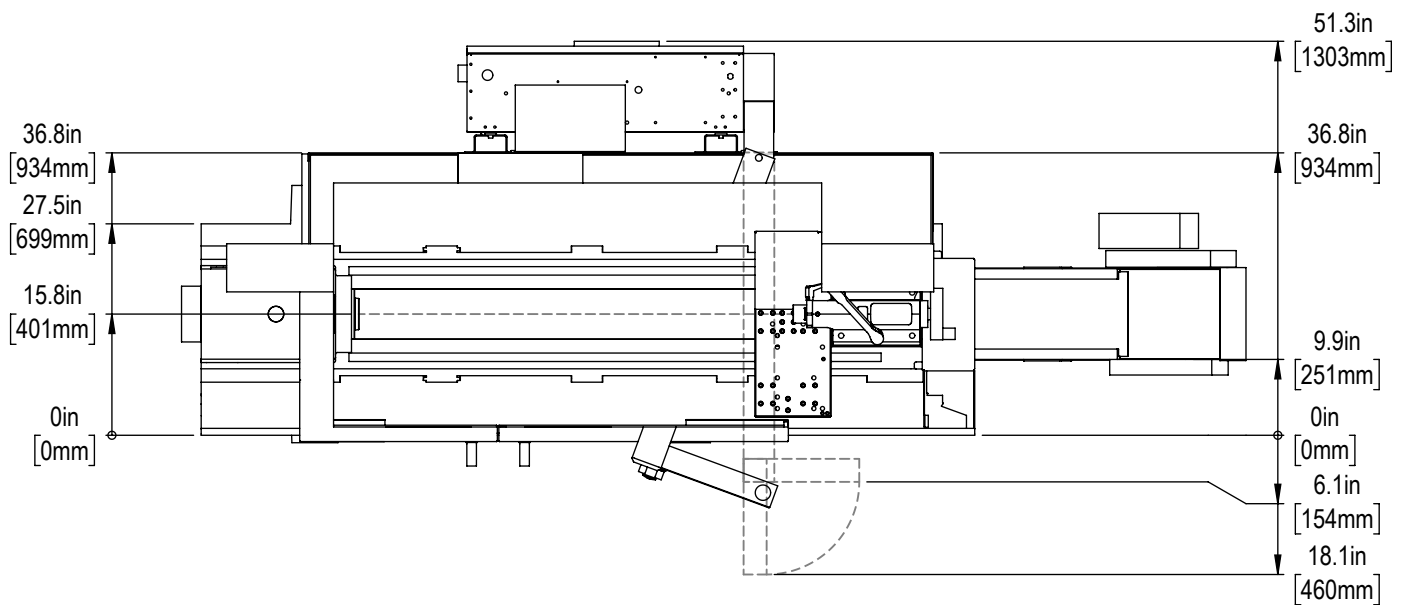




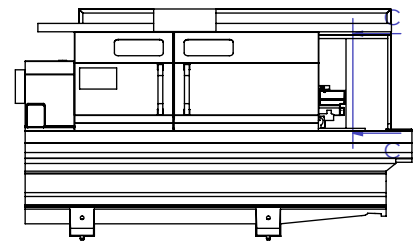
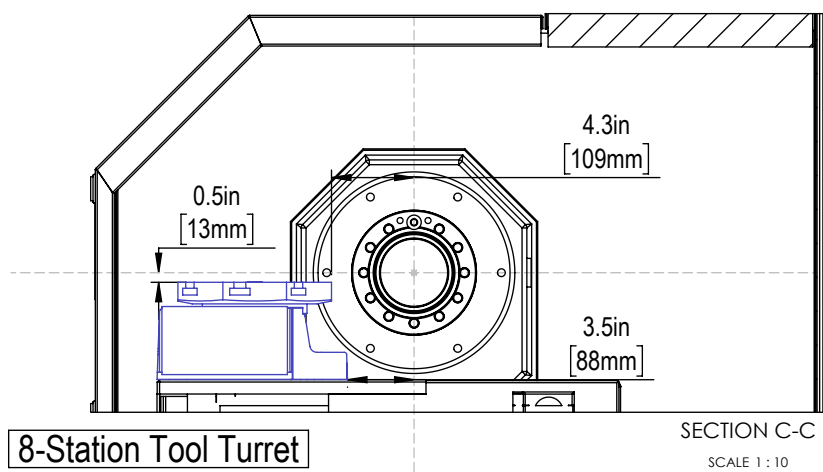
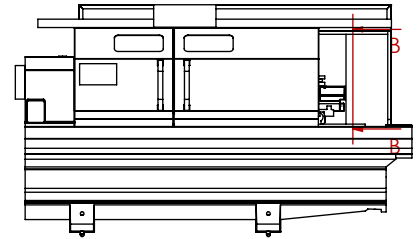
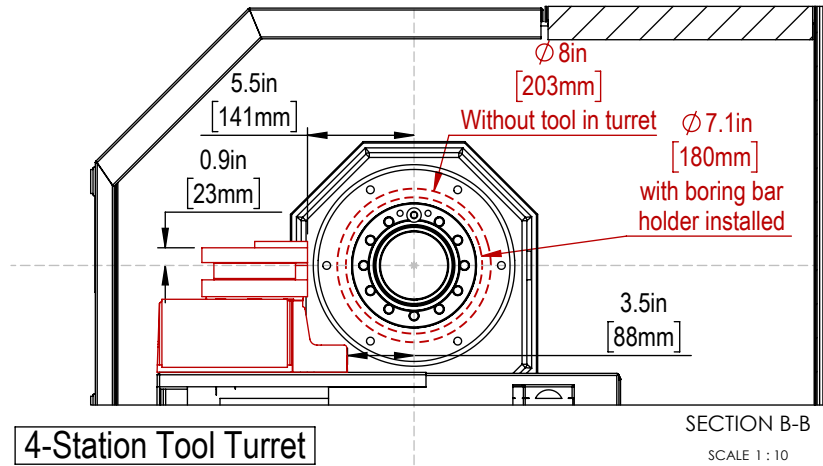
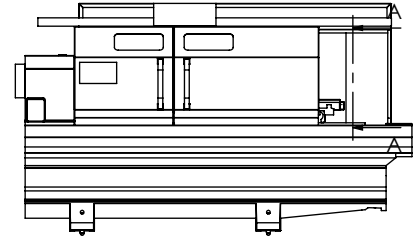
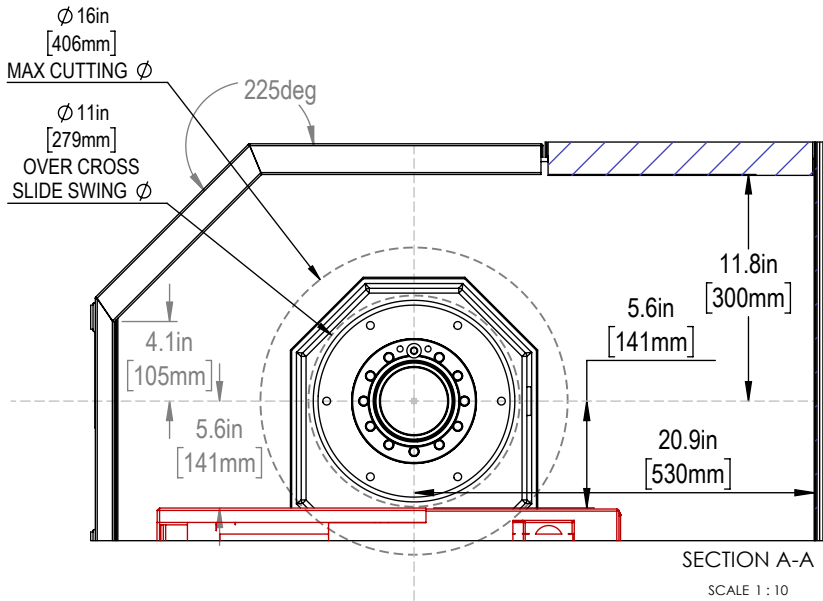
Height Breakdown

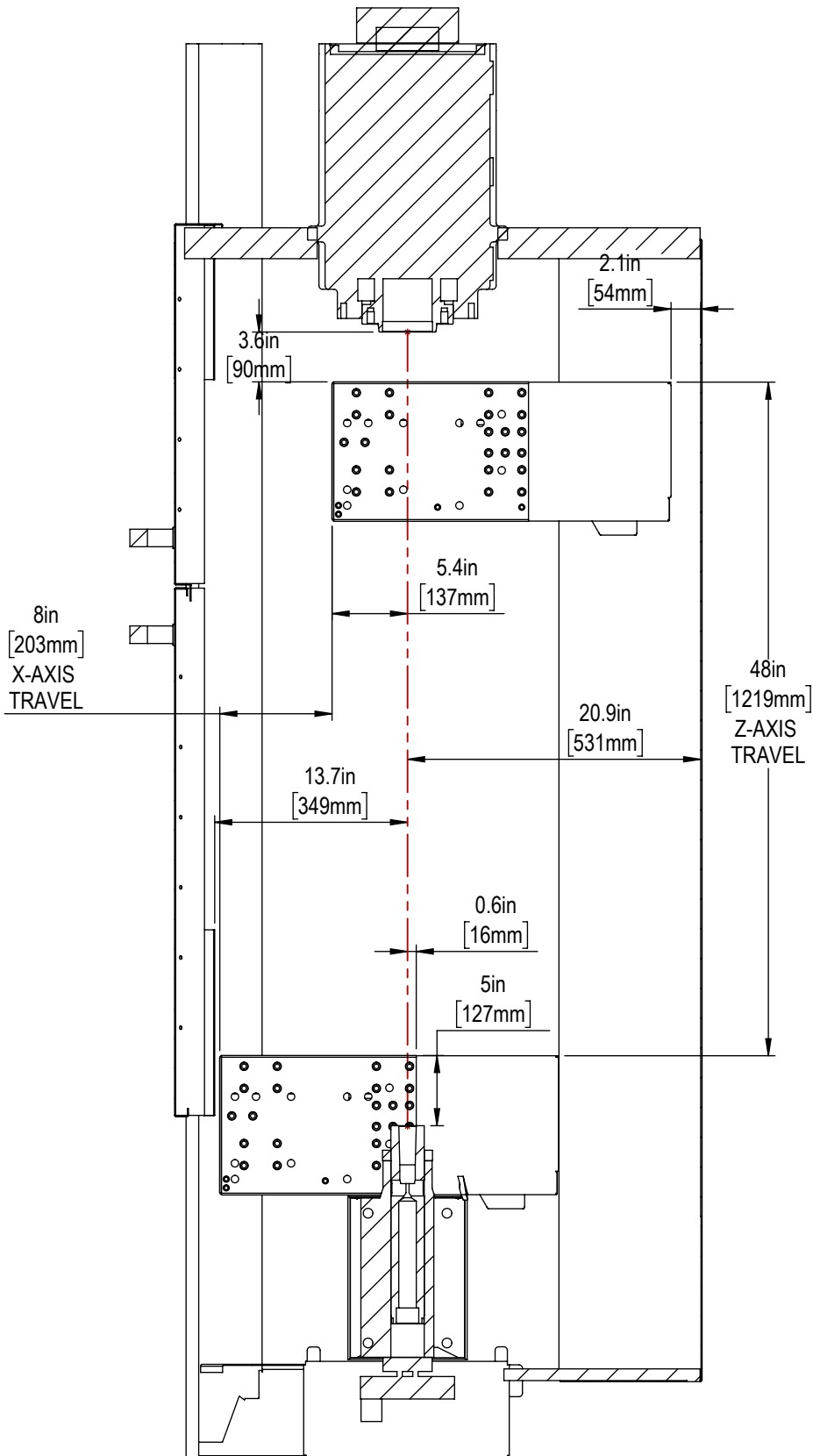


Width Breakdown



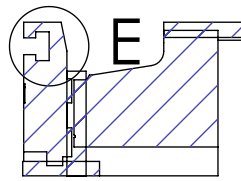
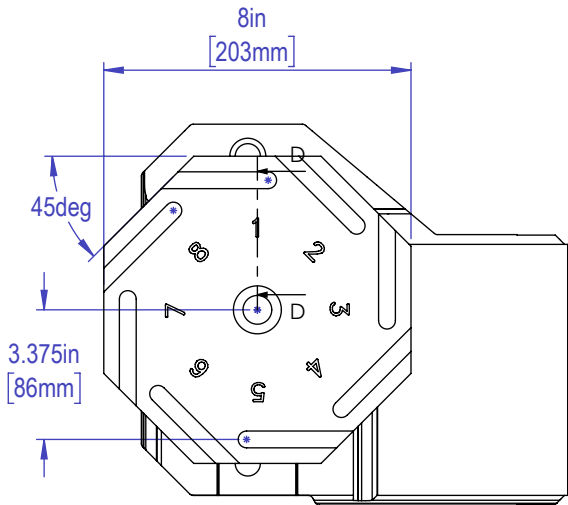
Maintain 3 feet [915mm] clearance to the nearest obstruction around all sides of machine perimeter for maintenance access



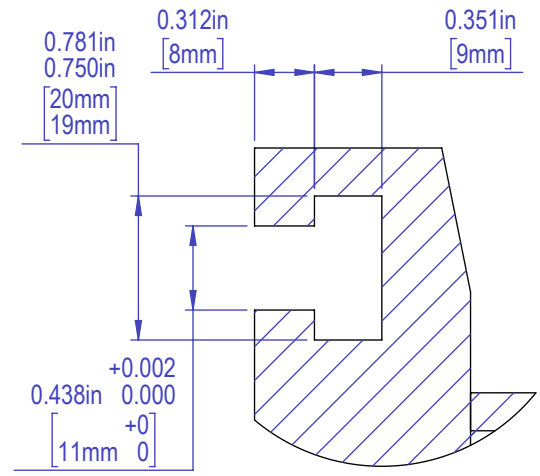


SECTION F-F

SCALE 1 : 12



SECTION D-D
SCALE 1 : 5



DETAIL E
SCALE 1 : 1

