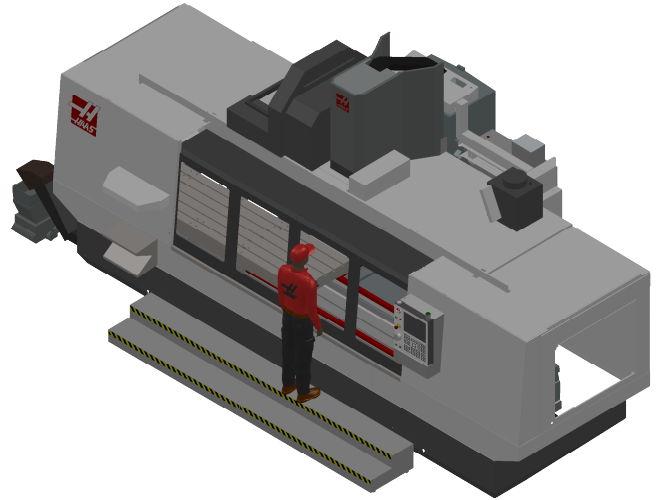
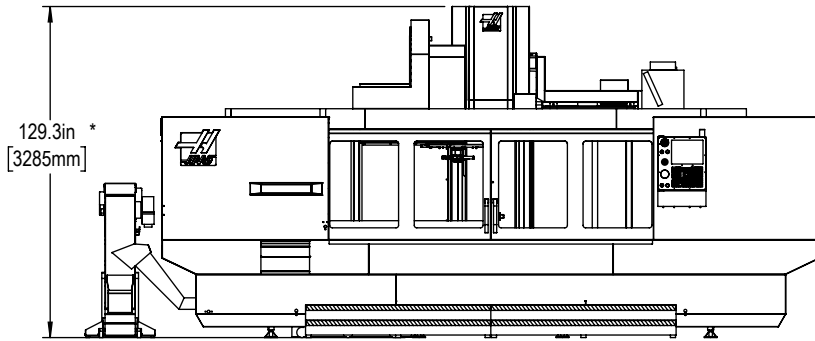
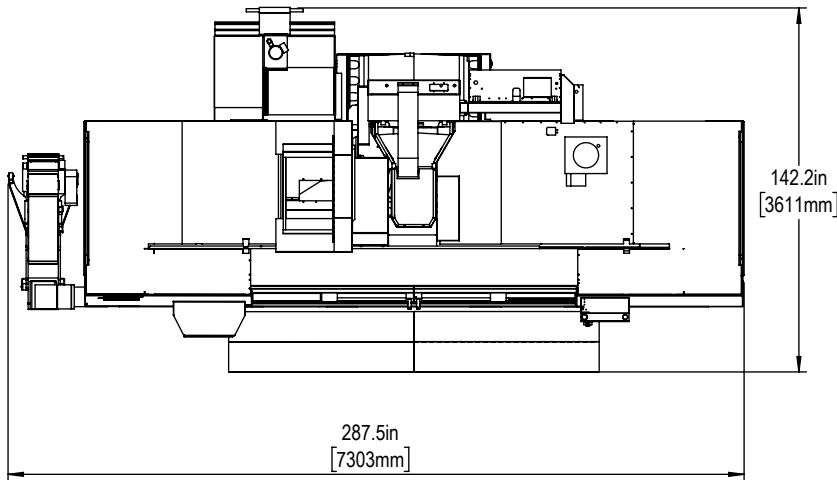




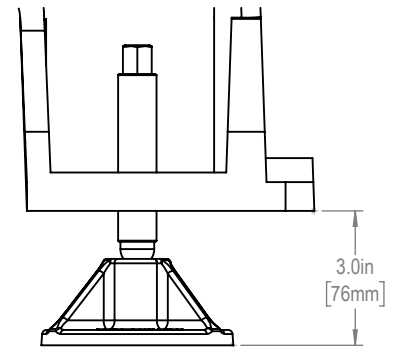
Installed Dimensions



NOTE: 8" EXTENDED Z-AXIS CLEARANCE OPTION ADDS 8" (203mm) TO DIMENSIONS WITH *

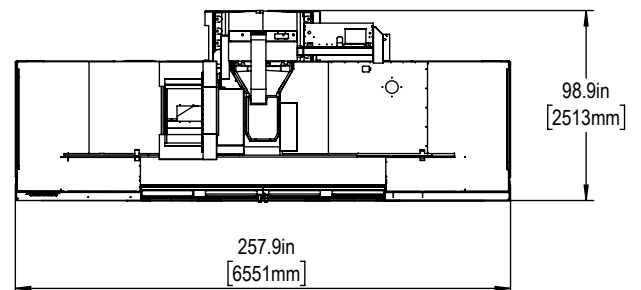
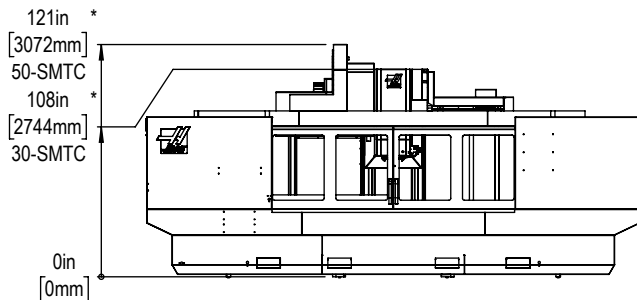


Leveling Pad Height

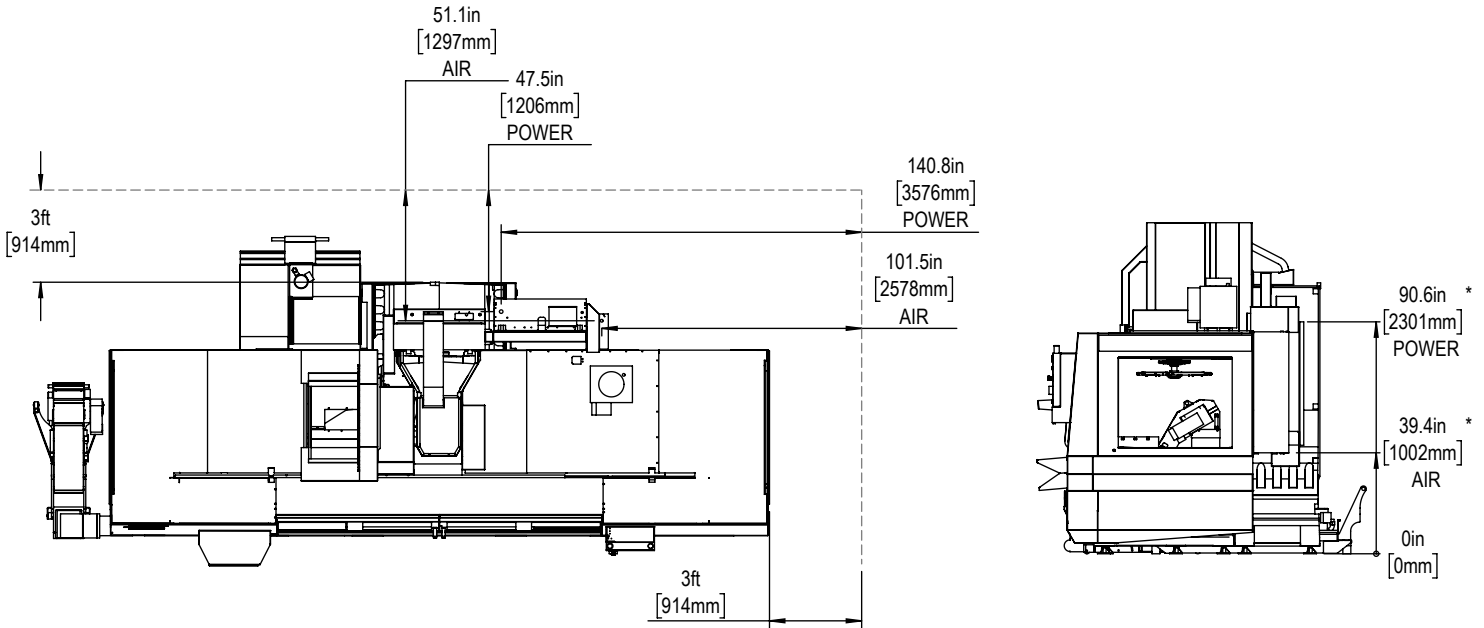


*All Height Dimensions Based on Suggested Leveling Pad Height

Shipping Dimensions



Air & Power



Maintain 3 feet [915mm] clearance to the nearest obstruction around all sides of machine perimeter for maintenance access

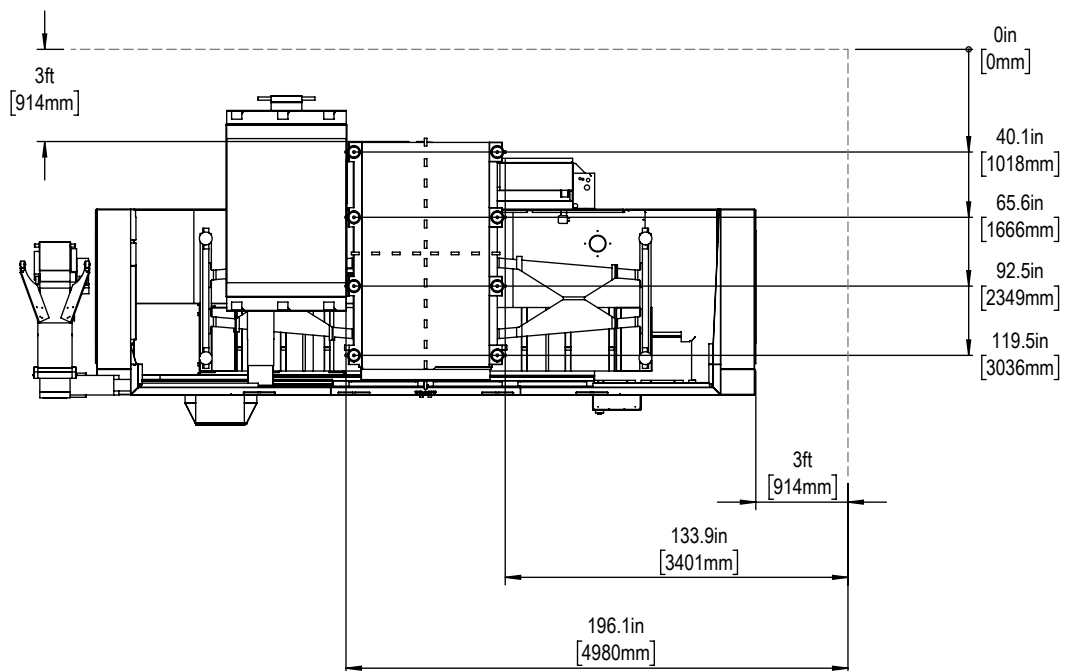
Note:
Machine must be placed on one continous concrete slab. Slab should extend 12in [305mm] beyond anchor holes in all directions

Anchor Pattern

For machines built before Oct. 2023

Anchor Hole Detail
 \varnothing 5/8in [15.8mm]
 ∇ 2.0in [51mm]-
 ∇ 2.25in [57mm]

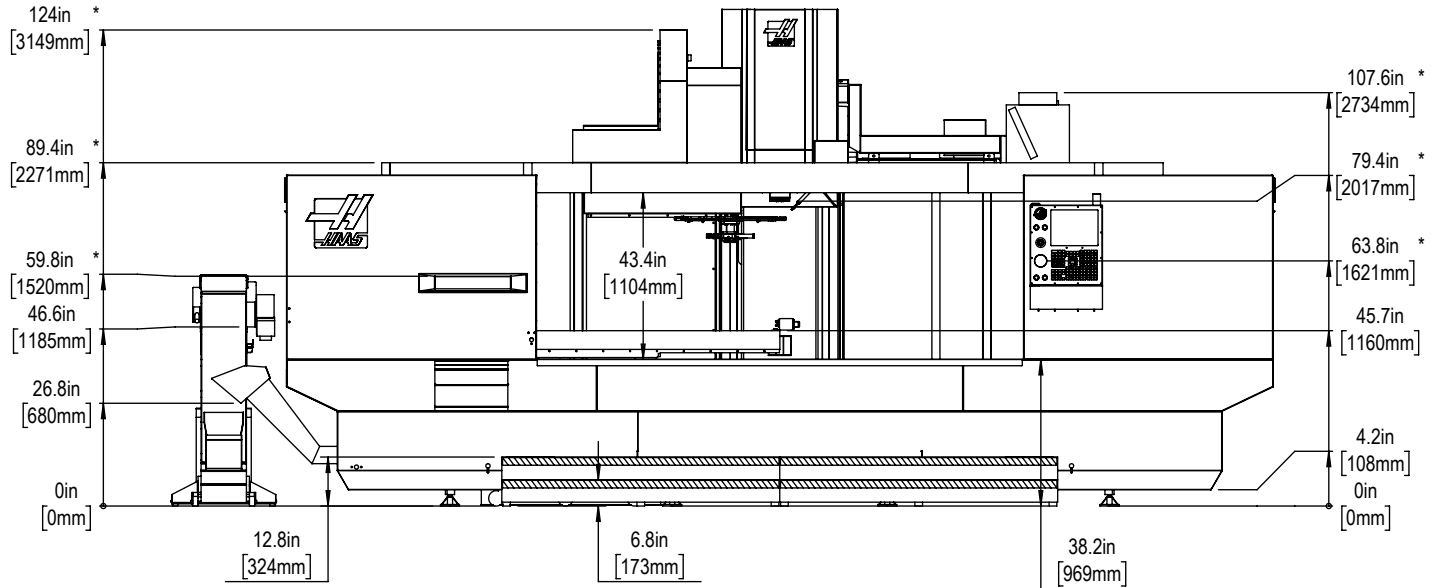
NOTE: For machines built after Oct. 2023, see separate Anchoring Template.



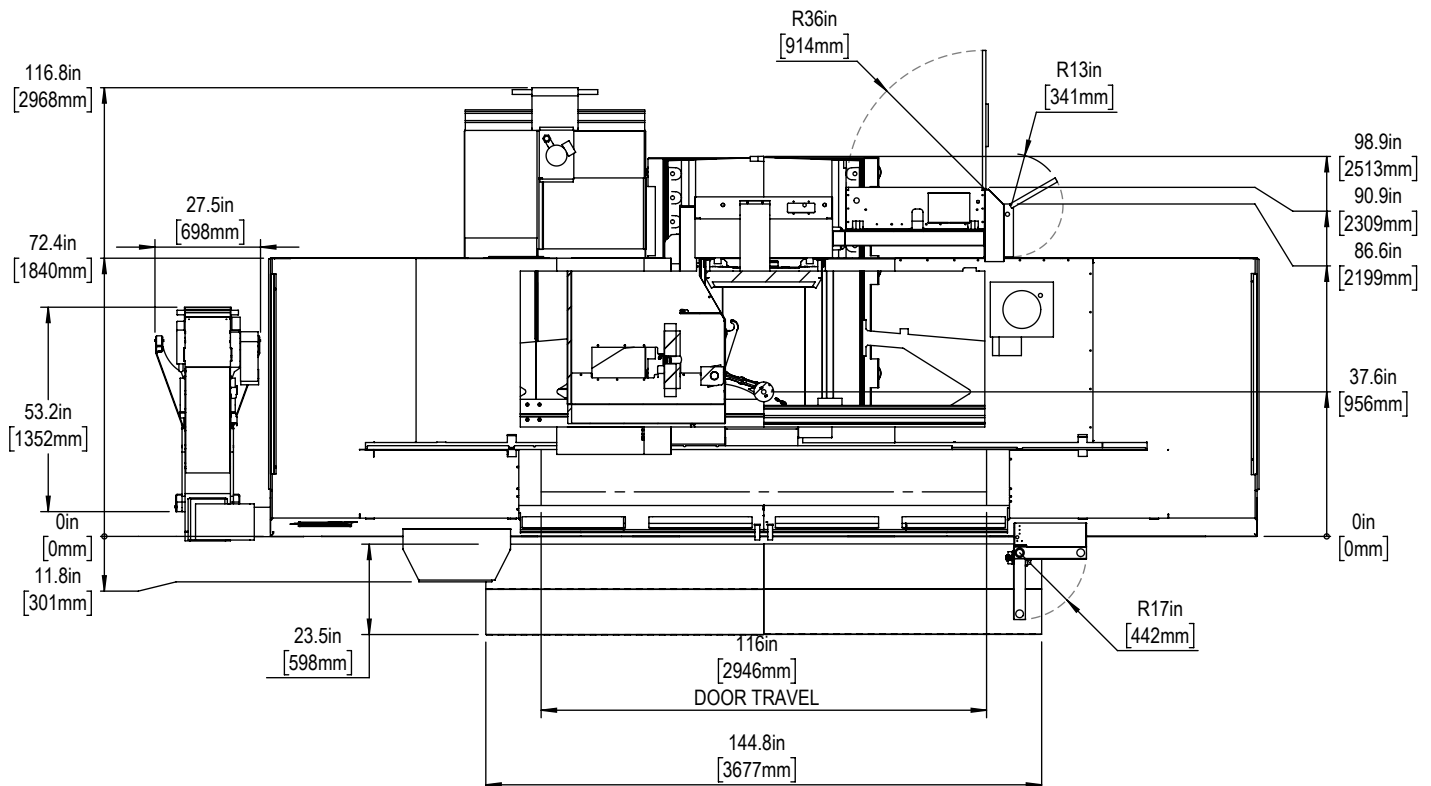
For precise locations and specifications please use template in Anchoring Kit found at Haascnc.com



Height Breakdown

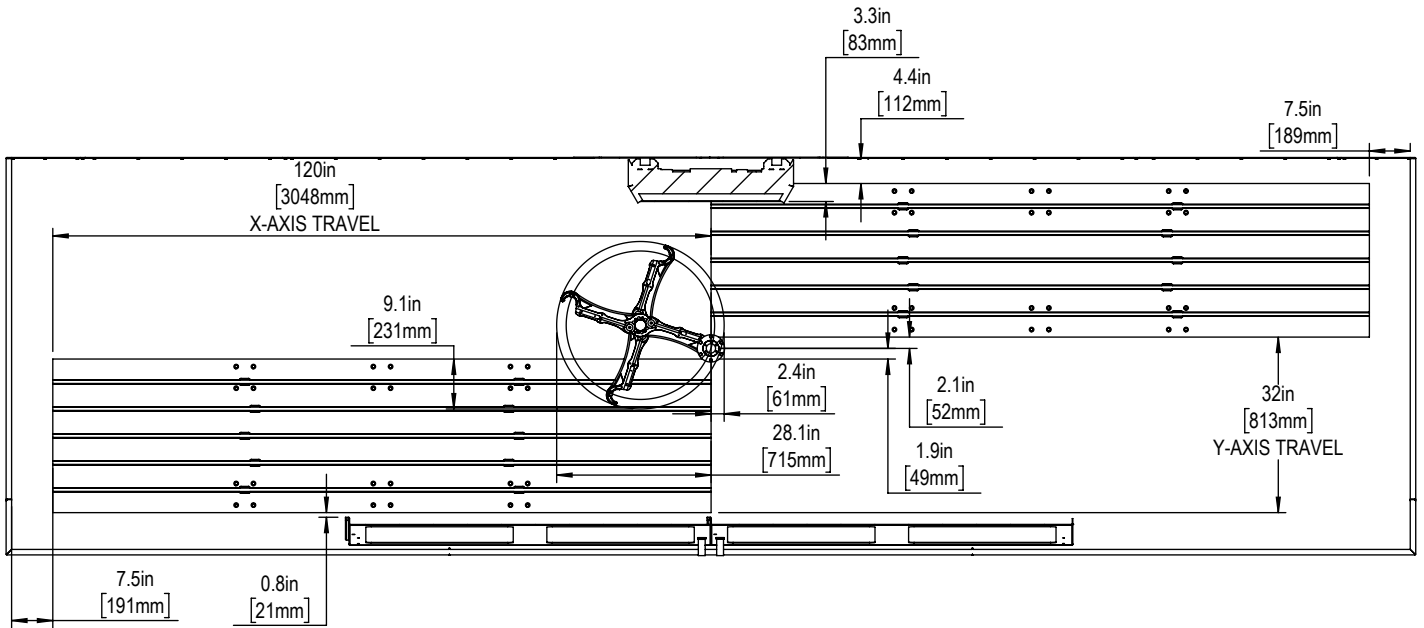


Width Breakdown

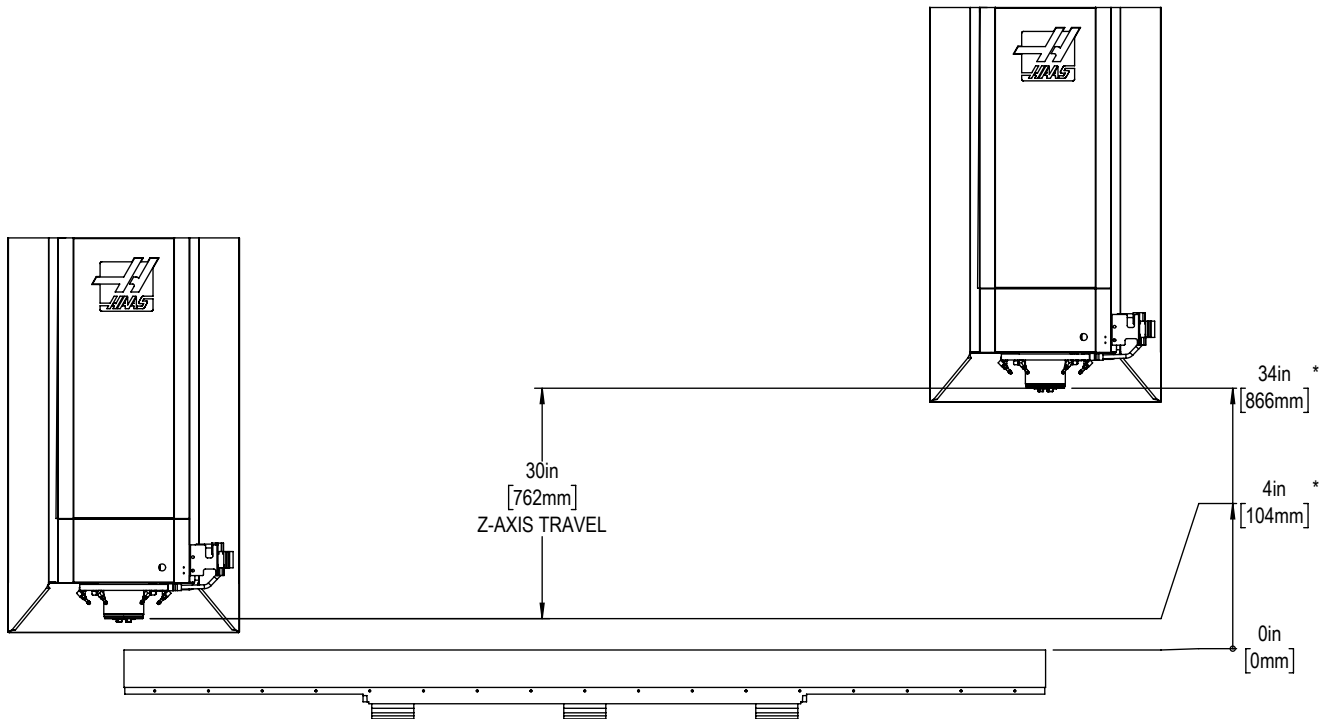




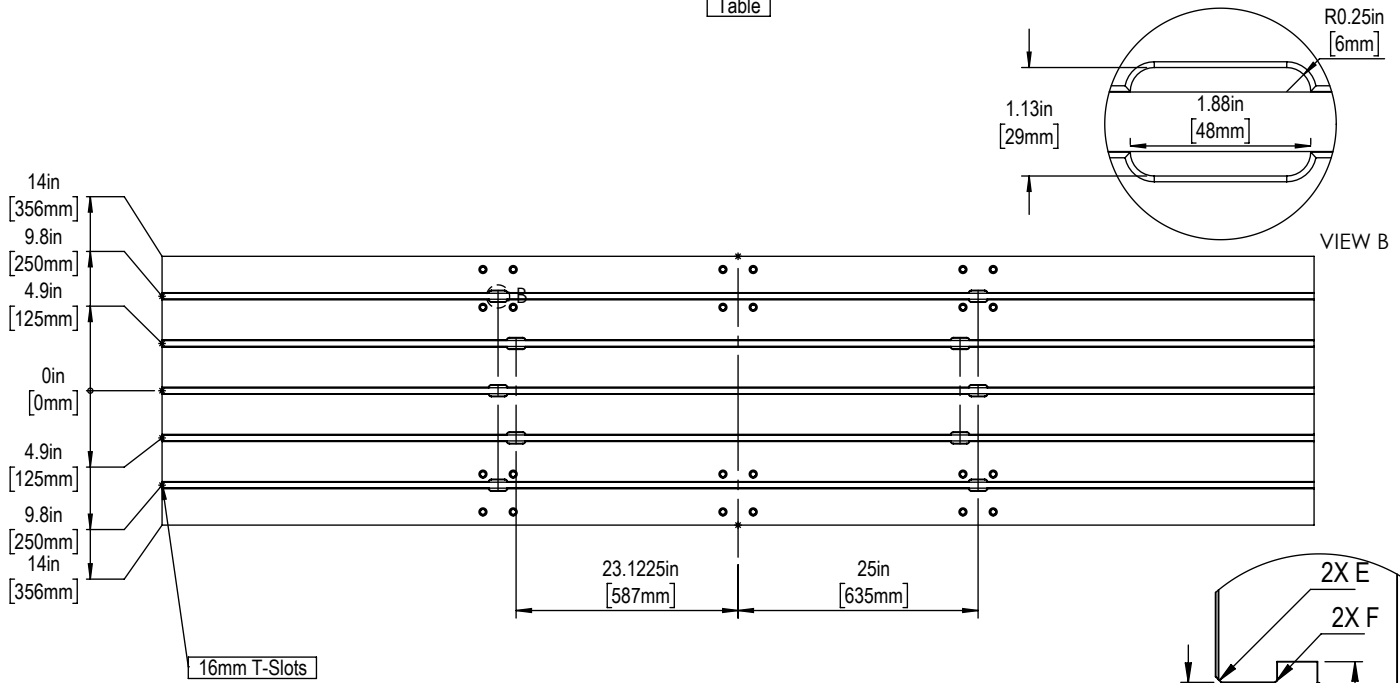
X&Y-Axis Travel and Clearance



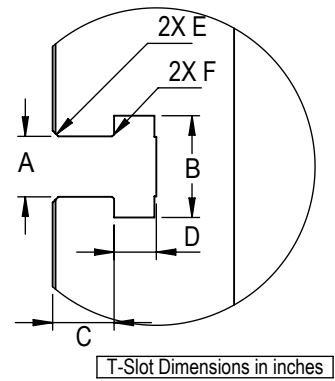
Z-AXIS TRAVEL & CLEARANCE



Table



Slot Size	A	B	C	D	E	F
12mm	0.438 ^{+0.002} / _{-0.000}	0.76 ± 0.02	0.310 ± 0.010	0.318 ± 0.010	0.03x45°	0.020x45°
16mm	0.628 ± 0.002	1.06 ± 0.02	0.640 ± 0.010	0.420 ± 0.010	0.06x45°	0.020x45°



Tool Changer

