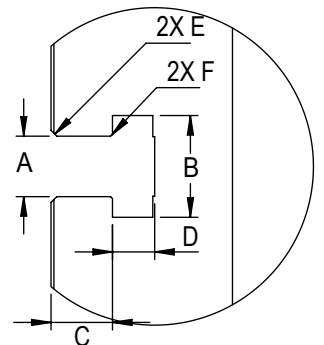


Note:

1. (10x) Phantom holes are not available to use for part fixturing
2. It is possible to route a hydraulic or pneumatic hose thru the trunnion
3. to center of the platter to accomodate automatic workholding with the following considerations
 1. A sealed rotary union must be used. The center bore leads directly to the trunnion cavity. An unsealed union will allow coolant and chips to penetrate the interior and cause damage
 2. From the factory there is a plug installed. The plug should be knocked out thru the bottom of the trunnion, or drilled thru to accomodate the sealed union
 3. The hoses should be sufficiently retained such that they do not interfere with any other components



Slot Size	A	B	C	D	E	F
12mm	$0.438 \begin{smallmatrix} +.002 \\ -.000 \end{smallmatrix}$	0.76 ± 0.02	0.310 ± 0.010	0.318 ± 0.010	$0.03 \times 45^\circ$	$0.020 \times 45^\circ$
16mm	0.628 ± 0.002	1.06 ± 0.02	0.640 ± 0.010	0.420 ± 0.010	$0.06 \times 45^\circ$	$0.020 \times 45^\circ$