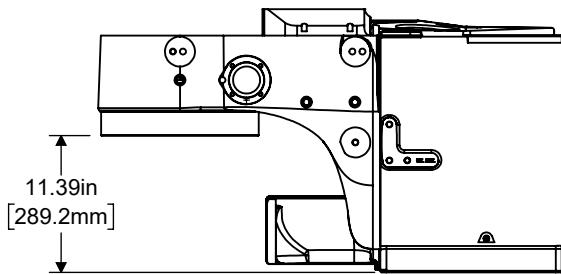
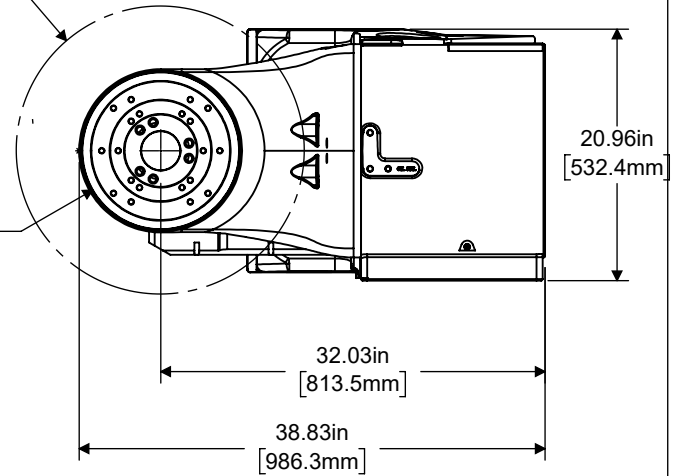


**Top View**  
**Platter Rotated 90° to Base**



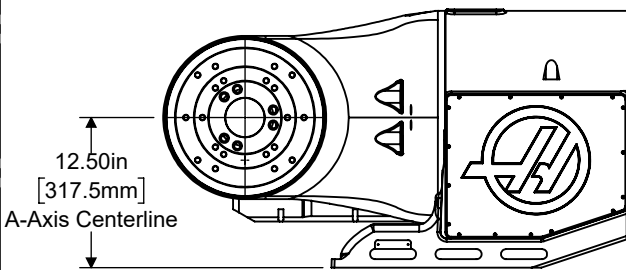
Ø 24.00in  
[609.6mm]  
Max Part Swing

**Top View**



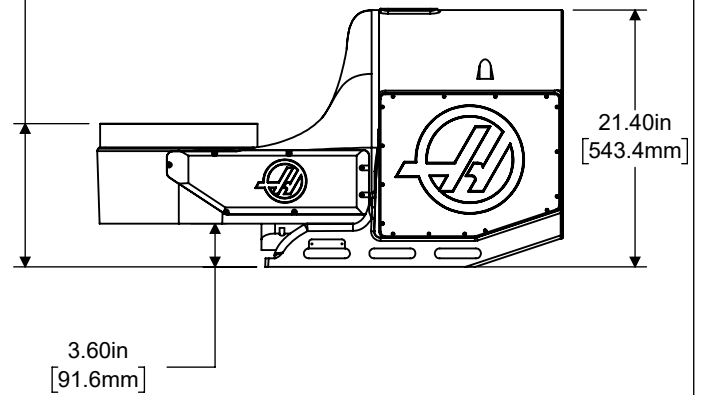
Ø 13.07in  
[331.9mm]  
Standard Platter  
Diameter

**Front View**  
**Platter Rotated 90° to Base**

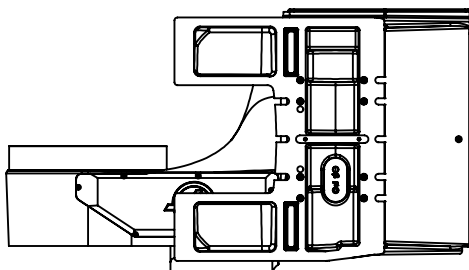


11.94in  
[303.2mm]  
B-Axis Platter Height

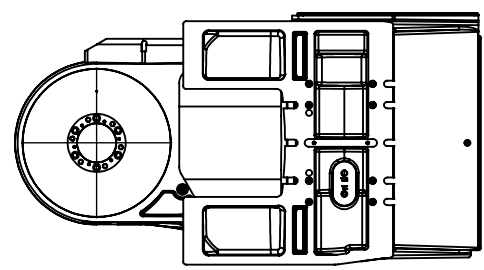
**Front View**



**Bottom View**  
**Platter Rotated 90° to Base**



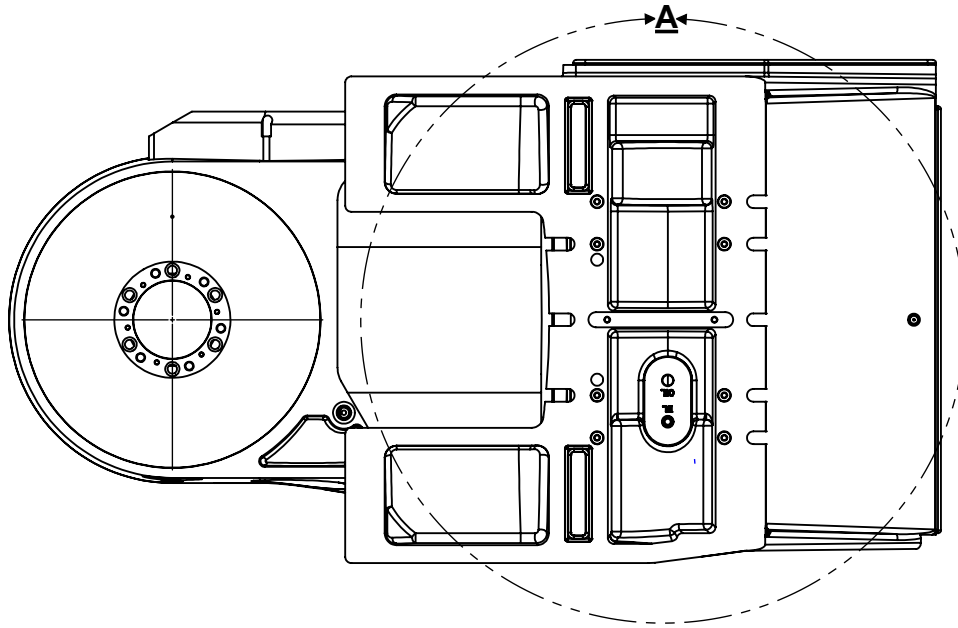
**Bottom View**



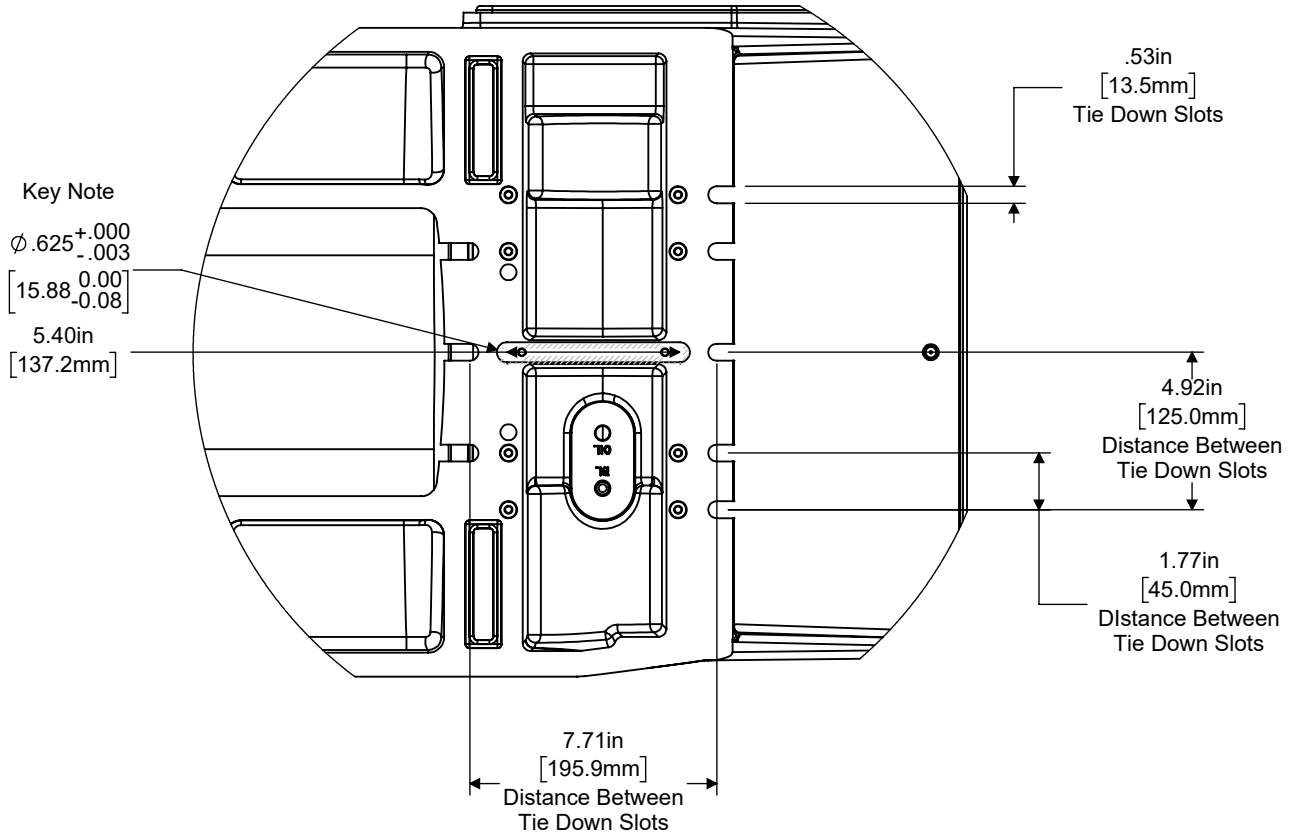
All Dimensions are based on stackup of sheet metal, subject to variation of 1/2" (13 mm)

All dimensions based on stackup of sheetmetal, subject to variation of 1/2" ( 13mm) Due to continual product improvements, dimensions are subject to change without notice

Bottom View

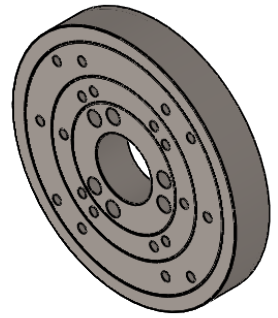


DETAIL A



All Dimensions are based on stackup of sheet metal, subject to variation of 1/2" (13 mm)

# Standard Platter



$\phi$  10.59in  
[269.1mm]  
Bolt Hole Circle  
4X M12X1.75-6H  
EQUALLY SPACED

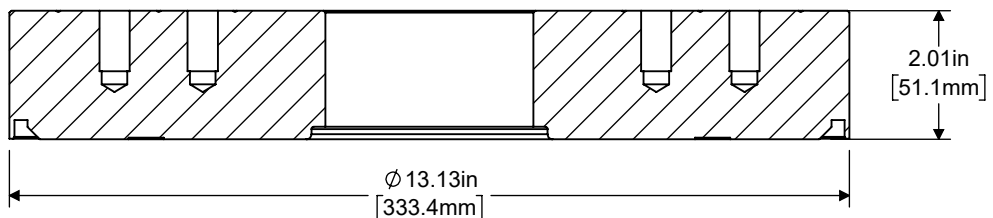
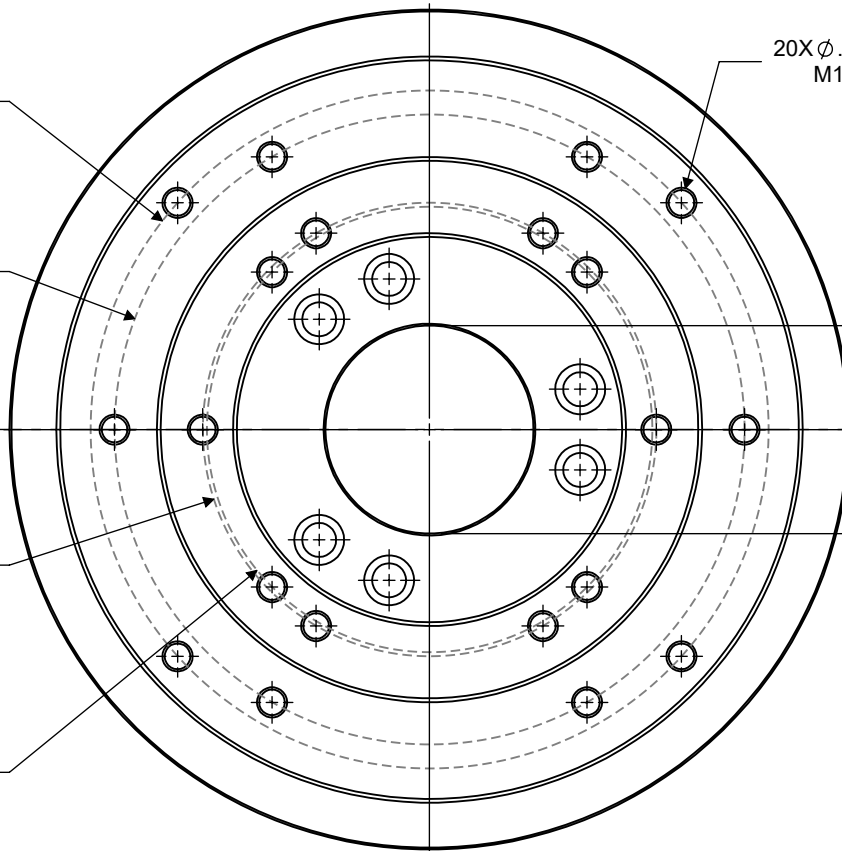
$\phi$  9.84in  
[250.0mm]  
Bolt Hole Circle  
6X M12X1.75-6H  
EQUALLY SPACED

$\phi$  7.09in  
[180.0mm]  
Bolt Hole Circle  
6X M12X1.75-6H  
EQUALLY SPACED

$\phi$  6.96in  
[176.8mm]  
Bolt Hole Circle  
4X M12X1.75-6H  
EQUALLY SPACED

20X  $\phi$  .472in [12.0mm]  $\nabla$  .829 [21.1mm]  
M12X1.75-6H  $\nabla$  .692 [17.6mm]

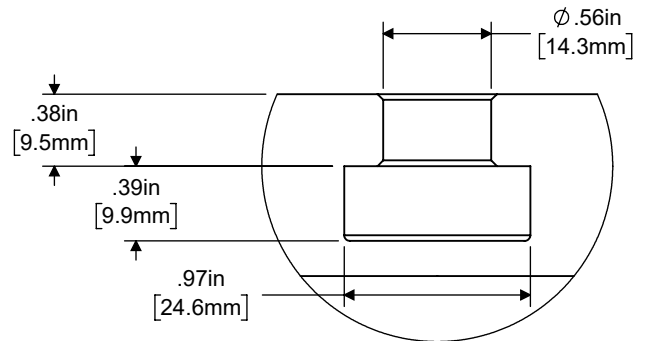
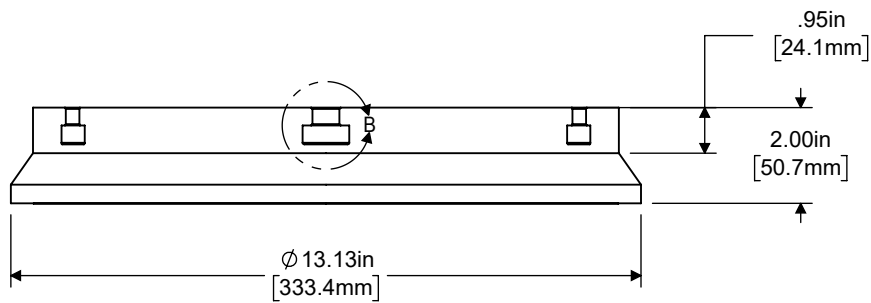
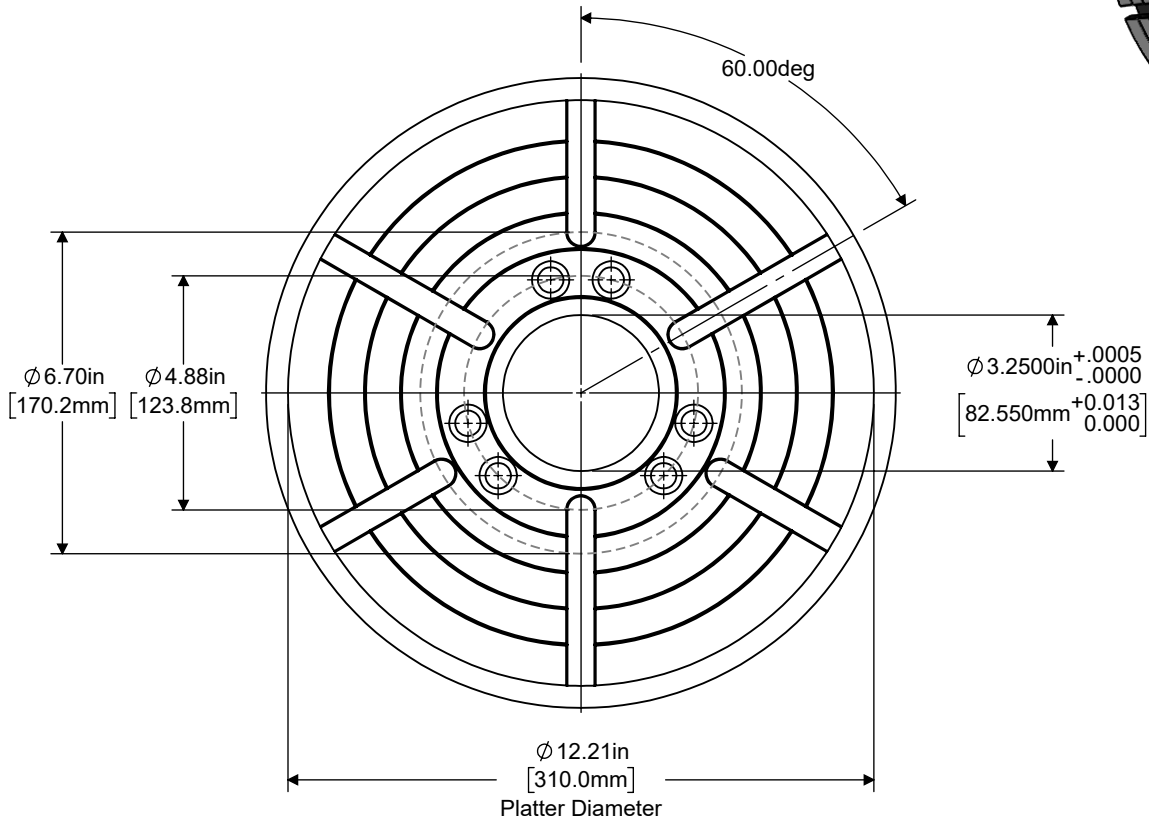
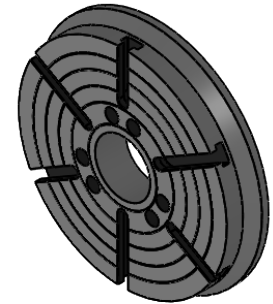
$\phi$  3.250in  $\begin{matrix} +.0005 \\ -.0000 \end{matrix}$   
[82.550mm  $\begin{matrix} +0.013 \\ 0.000 \end{matrix}$ ]  
Through Hole



SECTION F-F



# T-Slot Platter



DETAIL B

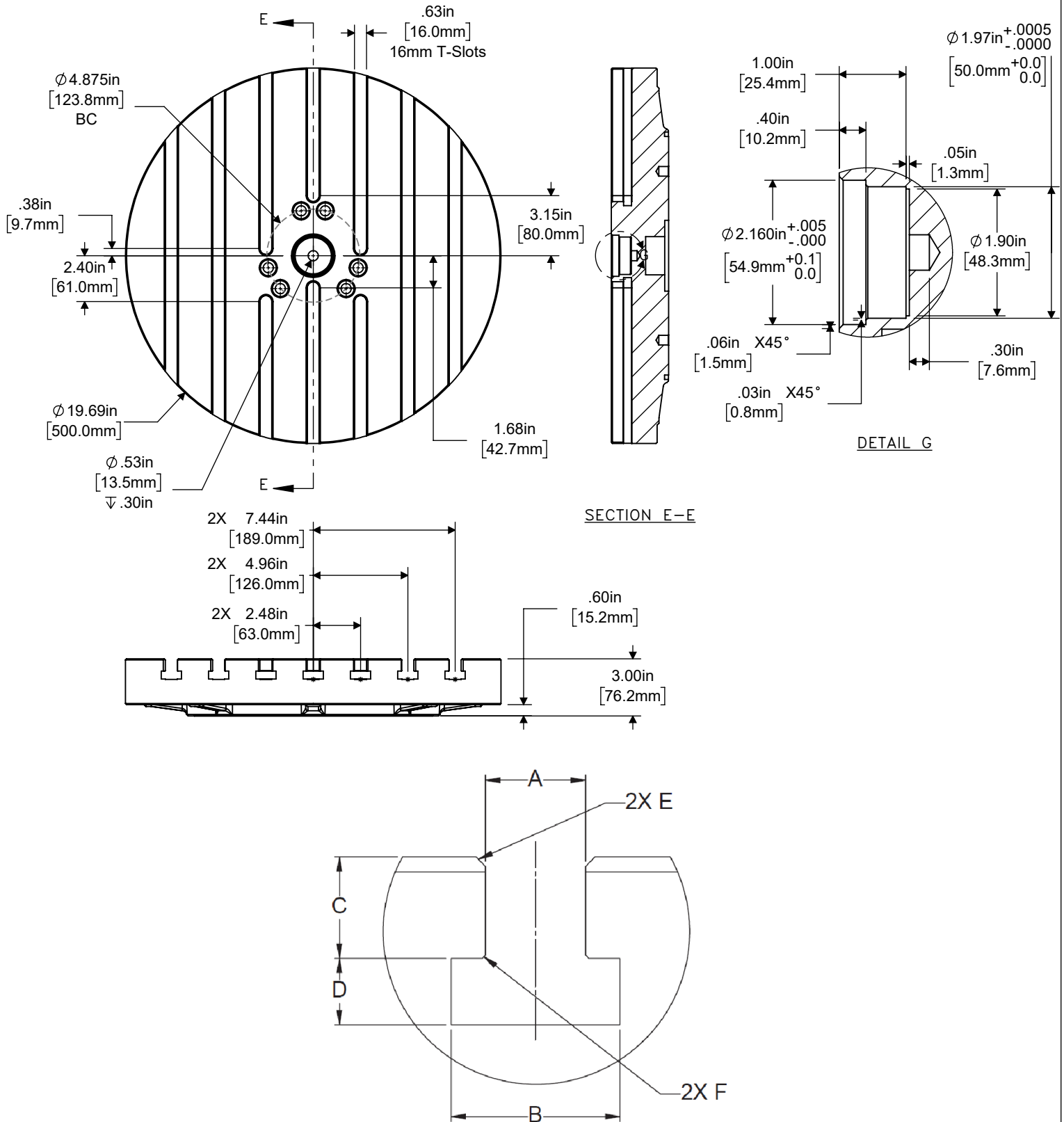


Figure 5.1

PRODUCT	SLOT SIZE	A	B	C	D	E	F
ROTARY	16 mm	$.628^{+.002}_{-.002}$	$1.06^{+.02}_{-.02}$	$.640^{+.010}_{-.010}$	$.420^{+.010}_{-.010}$	$.06 \times 45^\circ$	$.020 \times 45^\circ$
UMC's (Built in)		$.628^{+.002}_{-.002}$	$1.06^{+.02}_{-.02}$	$.440^{+.010}_{-.010}$	$.420^{+.010}_{-.010}$	$.06 \times 45^\circ$	$.020 \times 45^\circ$