

Information Module

DEVICE MANAGER



Haas Automation
Training

PROGRAM (LIST PROG) 000005 N00000000 F1-HELP	
DIRECTORY	
MEMORY	000000
FLOPPY	*000005 (TEST)
HARD DRIVE	002345 (WORK ORDER 0315)
USB DEVICE	009997 (HAAS VQC, Mill, English, Inch)
NET SHARE	
HELP	
3 PROGRAMS 88% FREE (889260 BYTES)	
SOURCE MEMORY 000005 DESTINATION MEMORY	
(HELP)-CURSOR LEFT, PRESS END, (TO COPY)-SEL SRC, <WRITE>, SEL DEST, NAME, F2	

Overview

Device Manager

Machines with the Hard Drive /Ethernet option or a USB have some different procedures for copying files. There is also a different appearance to the <LIST PROG>. screen.. Figure 1 below shows the screen that you see when you press <LIST PROG>. This display is called the Device Manager. It allows you to select files from any device that is connected to the control, without changing Settings. There are two sides to this display. On the left side is a list of devices and on the right you will see the directory of the device that is highlighted. You can see a “Help” menu by pressing the <END> button while on the left side (To return to the devices, you need to press <HOME>). Use the Right and Left cursor keys to move from one side to the other. To copy a file from one device to another, highlight the file you want to copy and press <WRITE/ENTER>. Then select the device that you want to copy the file to and press the Right arrow key to move to the Directory side of the display. At the bottom of the display you will see “SOURCE” and the device and the file you are copying. You should also see “DESTINATION” and the device that you are copying to. Press <F2> to copy the file. If you want a different name, first enter the name, then press <F2>.

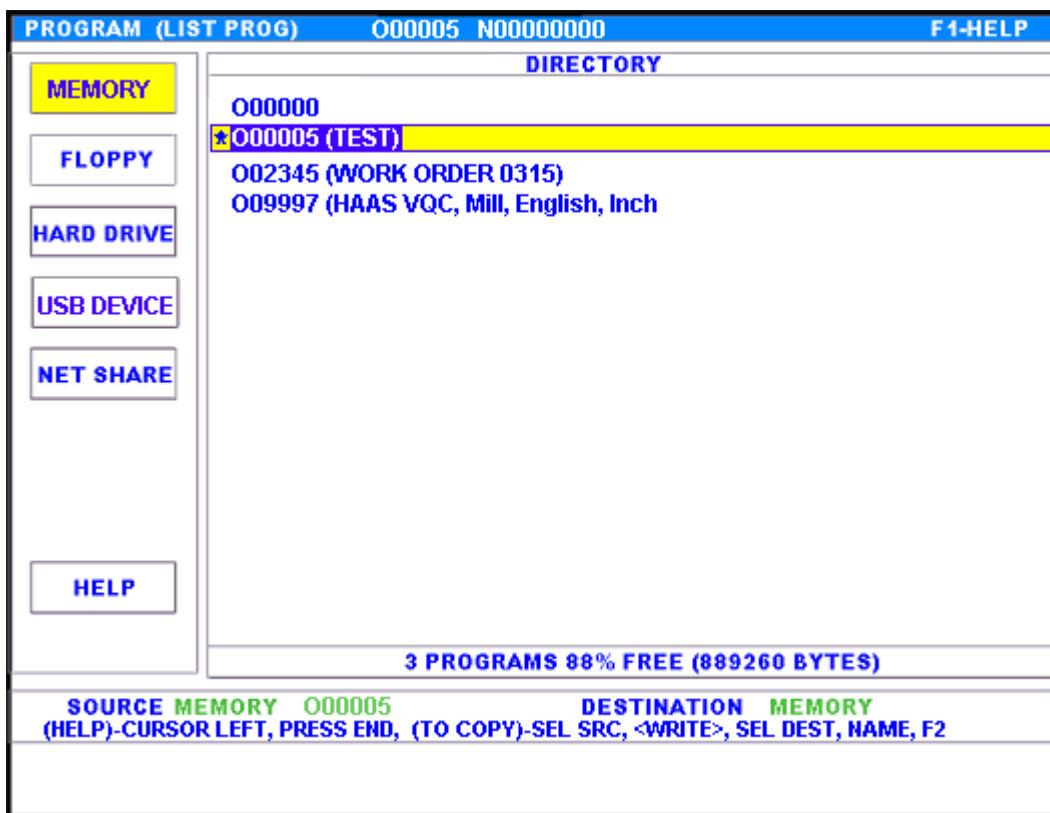


Figure 1

Load Programs from a Floppy or USB

1. Press <LIST PROG>.
2. Press the **Left** Cursor key to make sure you are on the DEVICE side. (Note: DEVICE will then be highlighted).
3. Press the **Down** Cursor key to highlight “FLOPPY” or "USB".
4. Press the **Right** Cursor key to move to the DIRECTORY side. You should now see a display similar to that shown in Figure 2 below.

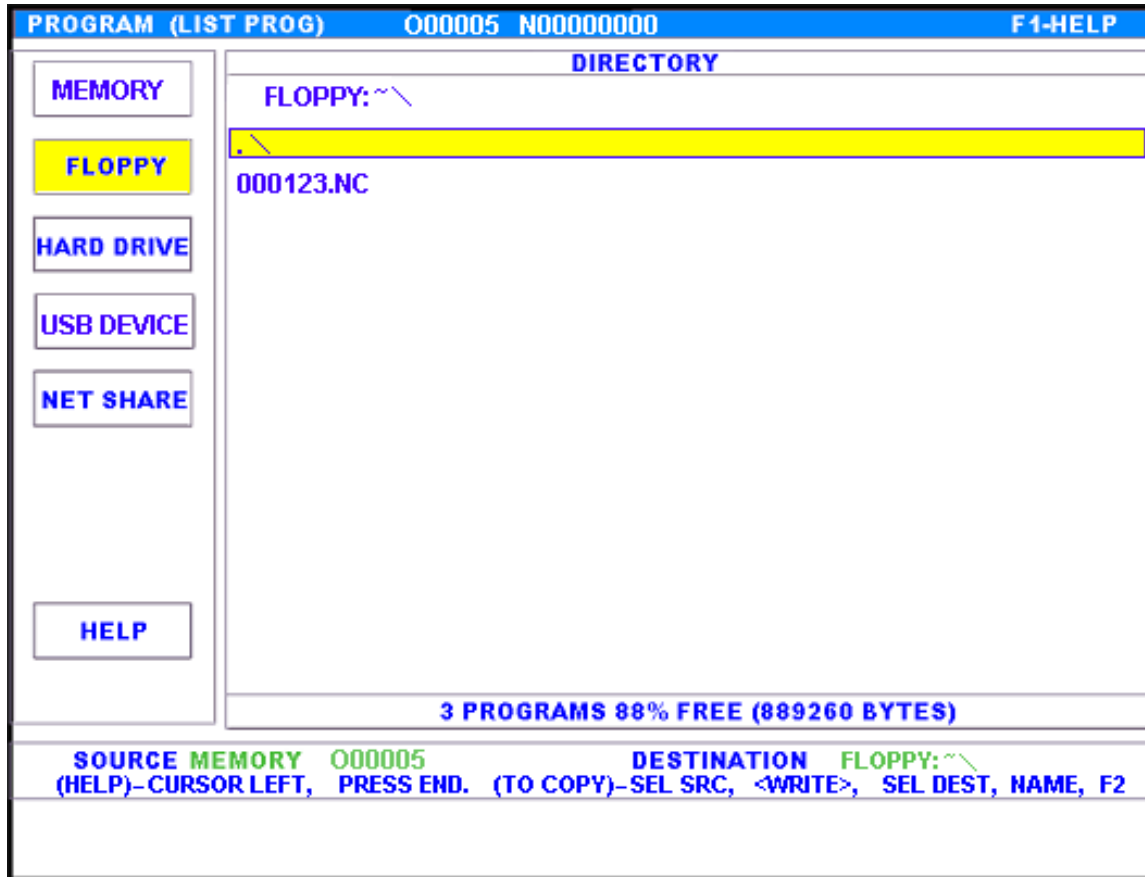


Figure 2

5. Press the **Down** Cursor key to highlight “000123.NC and then Press <WRITE/ENTER>.
6. Press the **Left** Cursor key to move to the DEVICE side of the screen.
7. Press the **Up** Cursor key to highlight “MEMORY”, and then Press the **Right** Cursor key.

Your display should now look like that in Figure 3. You should note that the SOURCE shows “FLOPPY” and the DESTINATION shows “MEMORY”.

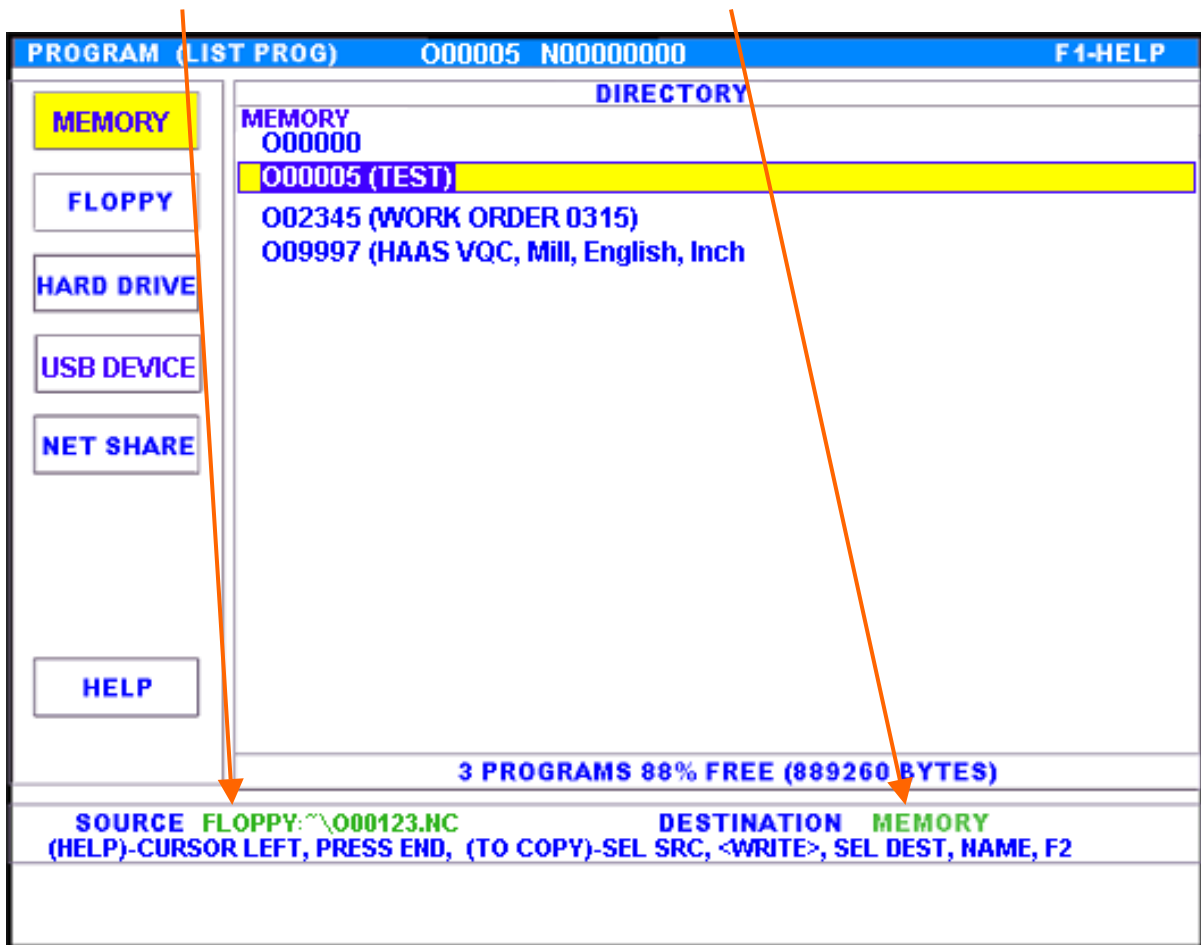


Figure 3

8. Press <F2> to copy the file from the Floppy to Memory.

Copy Programs from Memory

1. Press <LIST PROG>.
2. Press the Left Cursor key to make sure you are on the DEVICE side.
3. Press the Up Cursor key to highlight “MEMORY”, and then Press the Right Cursor key. You should see a display similar to that shown in Figure 4. Note that the “Source” will show the last file and device selected.

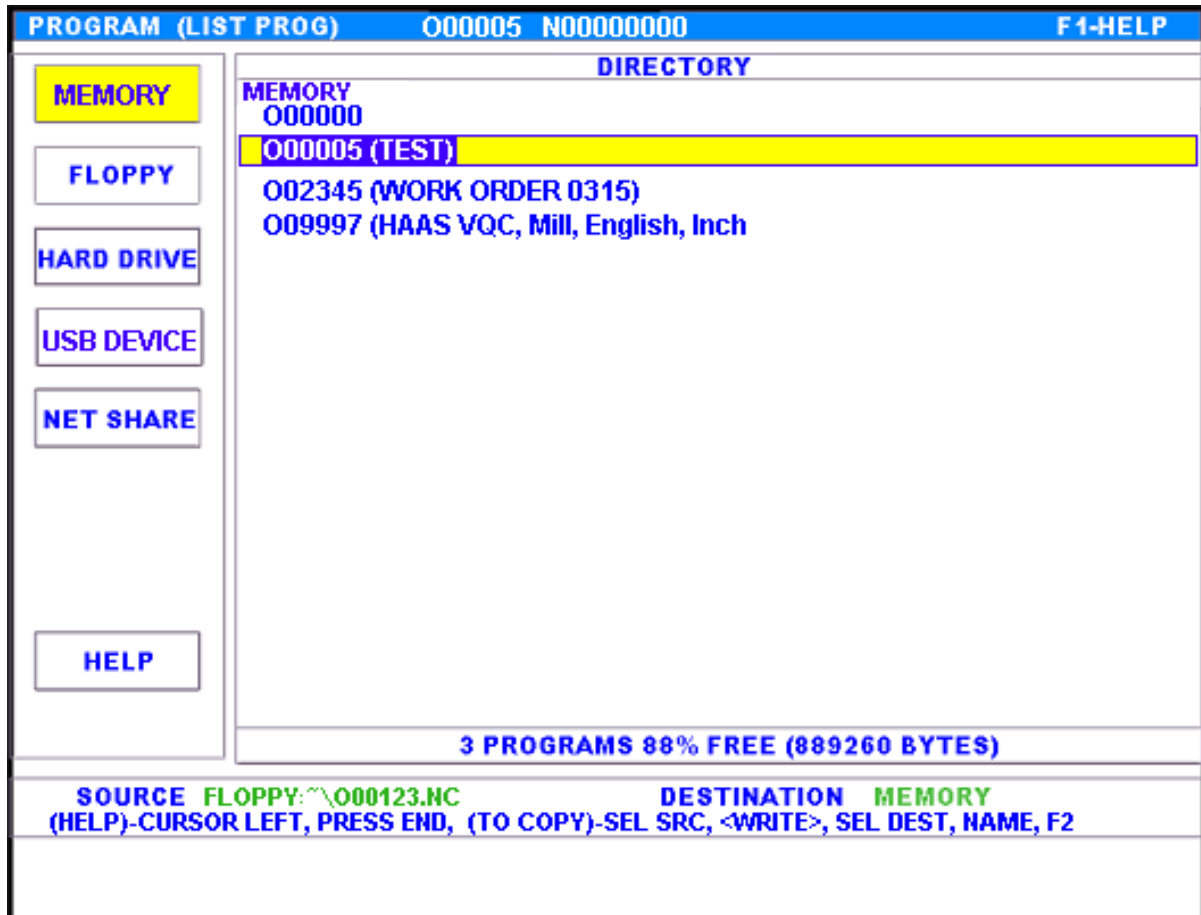


Figure 4

4. Select the desired file to copy (or select “ALL”).
5. Press the Left Cursor key to move to the DEVICE side of the screen.
6. Press the Down Cursor key to highlight “FLOPPY” (or other device).
7. Press the Right Cursor key to move to the DIRECTORY side.
8. Enter a name for the file and Press <F2>. You will notice that the control has automatically positioned itself back to the “DEVICE” side of the screen. You will need to Press the Right Cursor key (or <F4>) to view the directory and confirm that your file was copied.

You can similarly copy files to and from the other Devices shown on the Device Manager.

For more information on the Hard Drive system see the Hard Drive Information Module at <http://www.haascnc.com/training/InfoMods/HardDrive.ppt>