



Haas
FT Team
OFFICIAL MACHINE TOOL

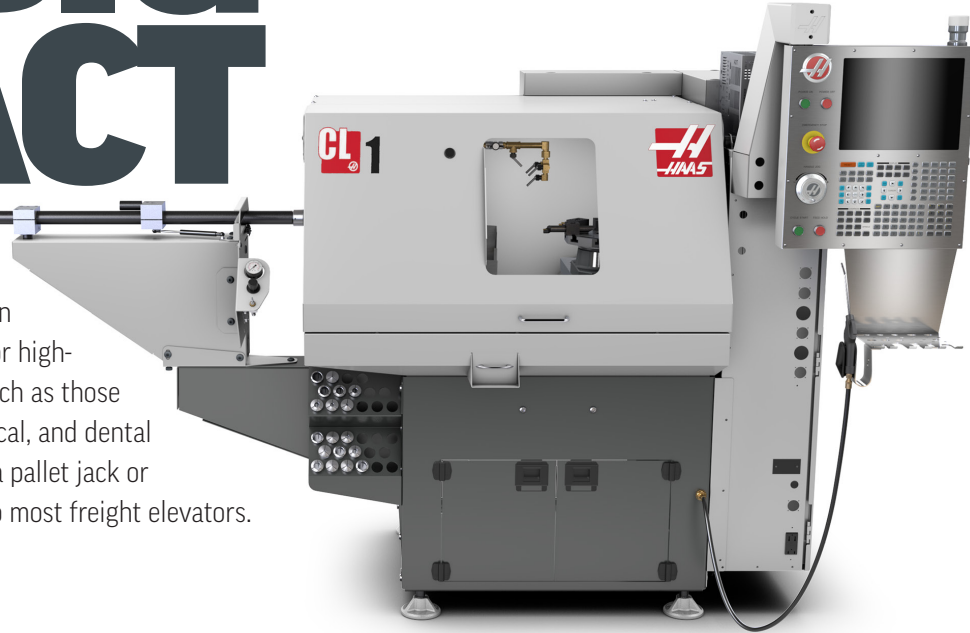


Small-footprint, affordable
CHUCKER LATHE
for prototyping or production work



SMALL FOOTPRINT **BIG IMPACT**

The innovative Haas CL-1 is an ultra-compact CNC chucker lathe that comes standard with an 8-station automatic turret, making it perfect for high-volume production of small, precision parts, such as those found in the communications, aerospace, medical, and dental industries. The CL-1 can be moved easily with a pallet jack or equipment dolly, and is small enough to fit into most freight elevators.



SWING DIAMETER		
Over Cross Slide	11.0 in	279 mm
Over Table	4.95 in	126 mm

CAPACITIES		
Chuck Size (max)	4.0 in	102 mm
Max Cutting Diameter	5.0 in	126 mm
Bar Capacity	1.00 in	25 mm

TRAVELS		
X Axis	12.0 in	305 mm
Z Axis	8.0 in	203 mm

FEEDRATES		
Max Cutting	500 ipm	12.7 m/min
Rapids on X	757 ipm	19.2 m/min
Rapids on Z	757 ipm	19.2 m/min

AXIS MOTORS		
Max Thrust X	1149 lbf	5111 N
Max Thrust Z	1149 lbf	5111 N

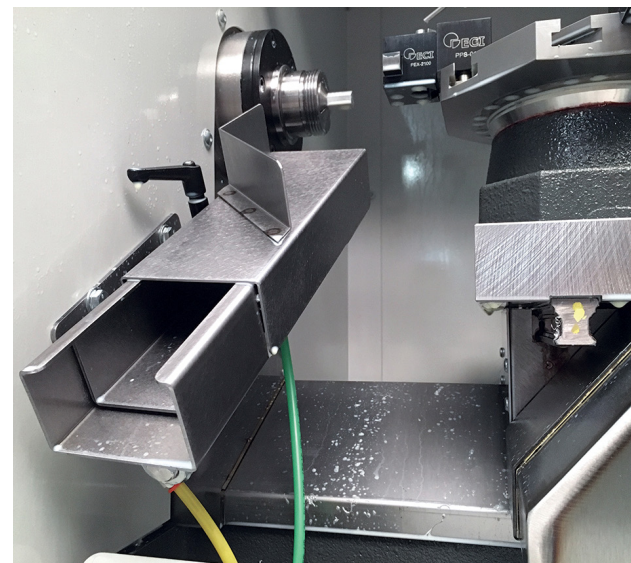
SPINDLE		
Spindle Nose	5C (collet) Type Nose	
Drive System	Direct Speed, Belt Drive	
Max Rating	5.0 hp	3.7 kW
Max Speed	6000 rpm	6000 rpm
Spindle Bore ø	1.25 in	31.8 mm

TOOLING	
Tooling	Gang Style-Any Combination

PARTS CATCHER

The CL Parts Catcher rotates into position to catch the finished part as it is cut off, and directs it into a bin located on the front of the machine. It is easily adjusted to accommodate different part-off locations, and finished parts can be retrieved without opening the door.

- Allows for unattended machining
- Fully integrated with the Haas control; activated by M-code
- Easily adjusts for different part-off locations
- Allows retrieval of finished parts without opening the door



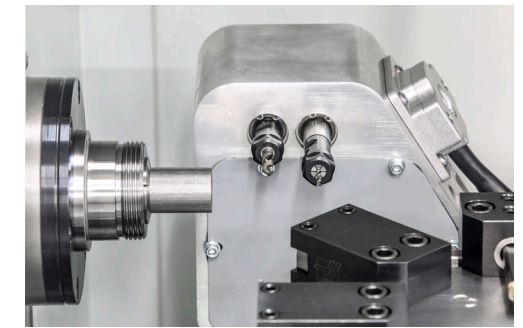
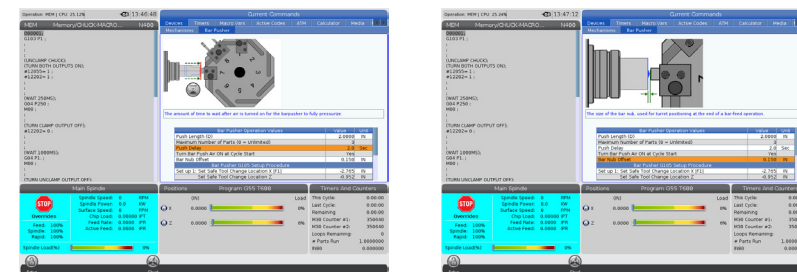
SPINDLE

The CL-1 features a 6000-rpm 5C collet spindle designed specifically for bar feeding operations. For larger diameter parts, a 4" (102 mm) manual 3-jaw scroll chuck can be mounted to the spindle nose. All Haas spindles are designed and built in-house at our Southern California manufacturing facility.



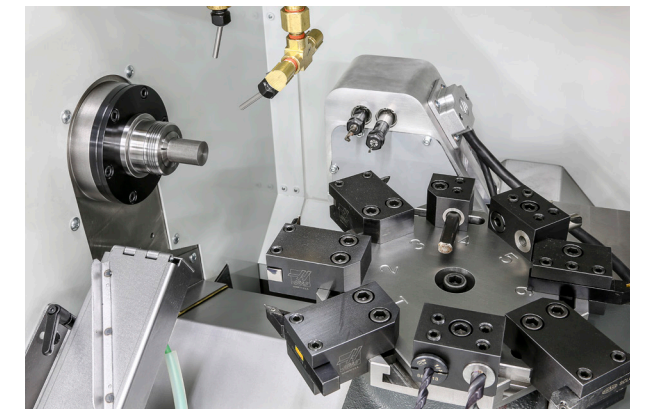
VISUAL PROGRAMMING SYSTEM

The Haas Visual Programming System uses graphical templates and a form-like interface to help you quickly create G-code programs for not only basic part features, but also more complex operations, like Y-axis milling/drilling, probing, and more. Simply define the feature in the template, and VPS then outputs working G-code at the touch of a button. VPS also includes a custom template generator, so you can create templates for your own part features or frequently used programs.



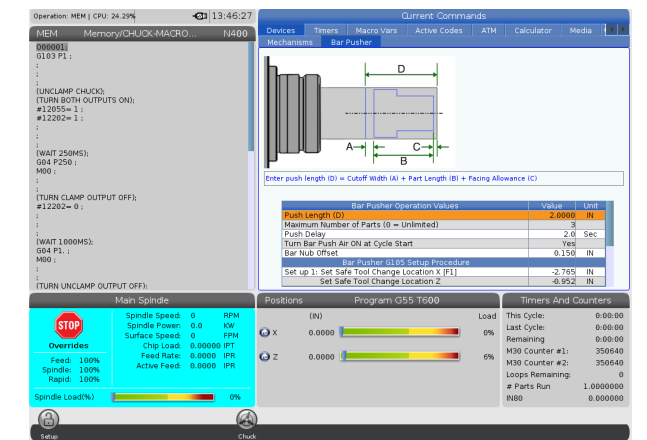
LIVE TOOLING

Our 6000-rpm Live Tooling option for the CL-1 features dual ER-11 spindles that accept 1/16" - 1/4" (1.59 - 6.35 mm) tools. It includes fully synchronized C-axis motion, allowing you to perform secondary milling operations around the diameter of the part.



TOOL TURRET

The CL-1 comes standard with an 8-station automatic tool turret. This turret accommodates gang-style tooling with 1/2" (12.7 mm) centers.



Automate Your Turning Center Production

CL-1 Bar Feeder

Boost throughput and automate small-parts production on your CL-1 Chucker Lathe with our fully integrated pneumatic bar feeder. The CL-1 Bar Feeder automatically loads 0.25" (6.35 mm) to 1" (25.4) diameter bars, and is available in two sizes to handle either 40" (1 m) or 72" (1.8 m) long bars for extended production runs and unattended operation.

- Easy-to-use interface in the Haas control
- Simple bar loading procedure
- Available to handle either 40" (1 m) or 72" (1.8 m) bars
- Fully integrated automation solution

Note: Spindle speed is limited to 3000 rpm when using the bar feeder.



WE ARE INDUSTRY 4.0 READY

TECHNOLOGY FOCUS:
Make the Connection with **HAASCONNECT**



The Haas Control has the ability to send you, and others you designate, email notifications about the operating status of your Haas machine. Set up is simple and easy through the MyHaas Portal and HaasCNC.com.

GET YOUR MACHINE STATUS NOTIFICATIONS ANYWHERE. ON ANY DEVICE.

Go to HaasCNC.com and click on MyHaas to get set up on HaasConnect.

Haas Automation, Inc.
2800 Sturgis Rd., Oxnard, CA, USA, +1-805-278-1800

Haas Automation Europe
Mercuriusstraat 28, B-1930 Zaventem, Belgium, +32 2 522 99 05

Specifications subject to change without notice. Not responsible for typographical errors. Machines shown with optional equipment. Actual product appearance may differ. Pricing subject to change without notice.

