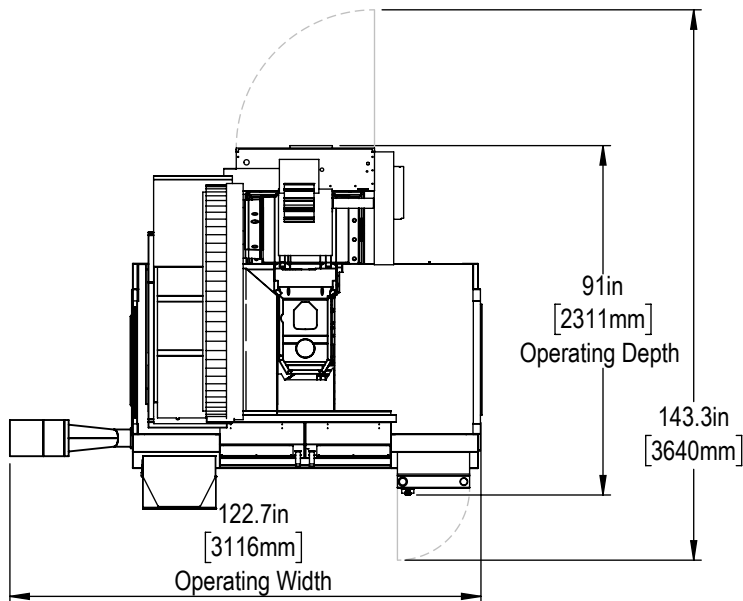
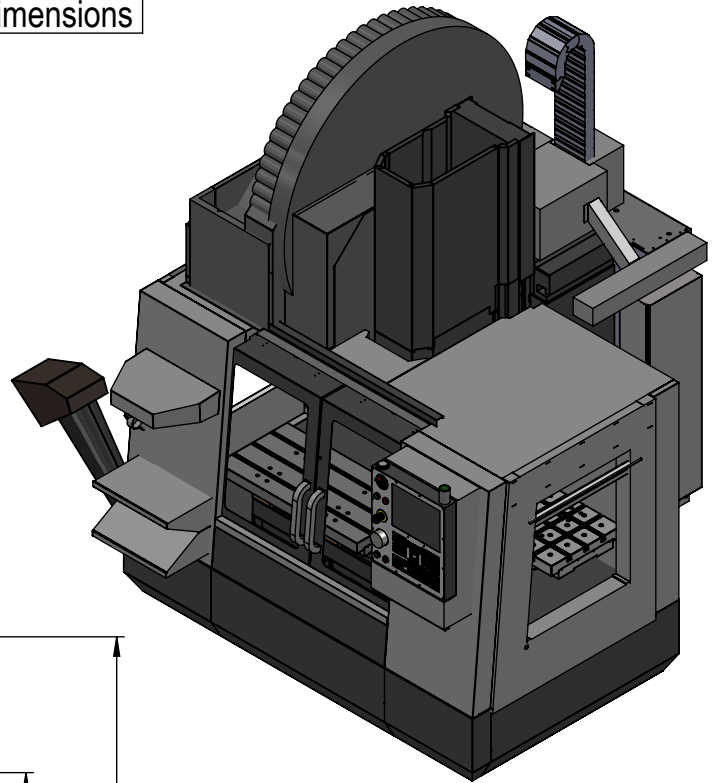
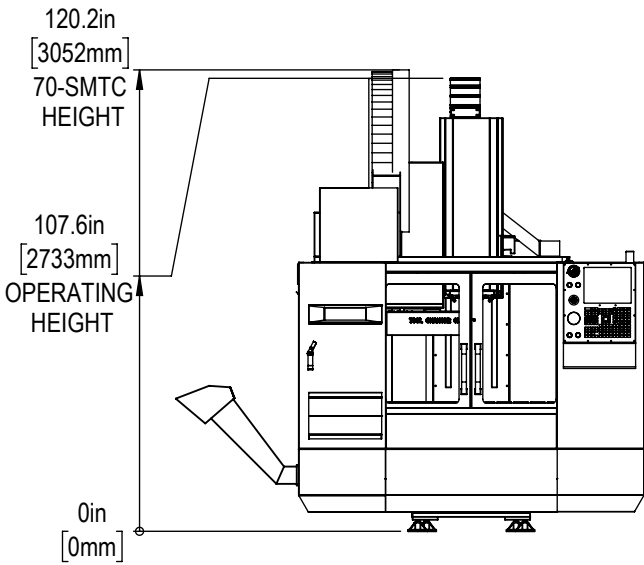
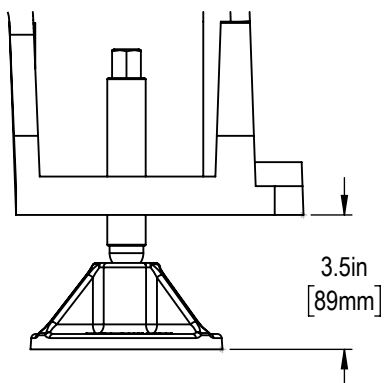


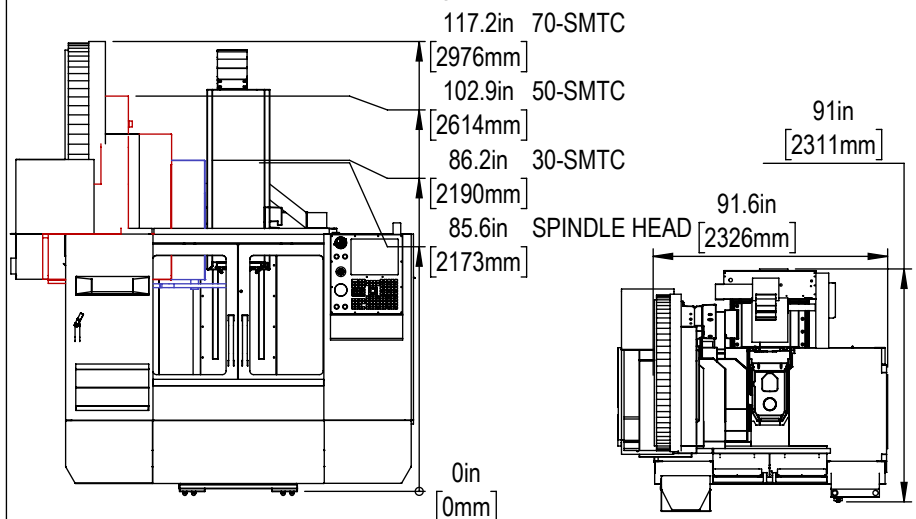
Installed Dimensions



Leveling Pad Height

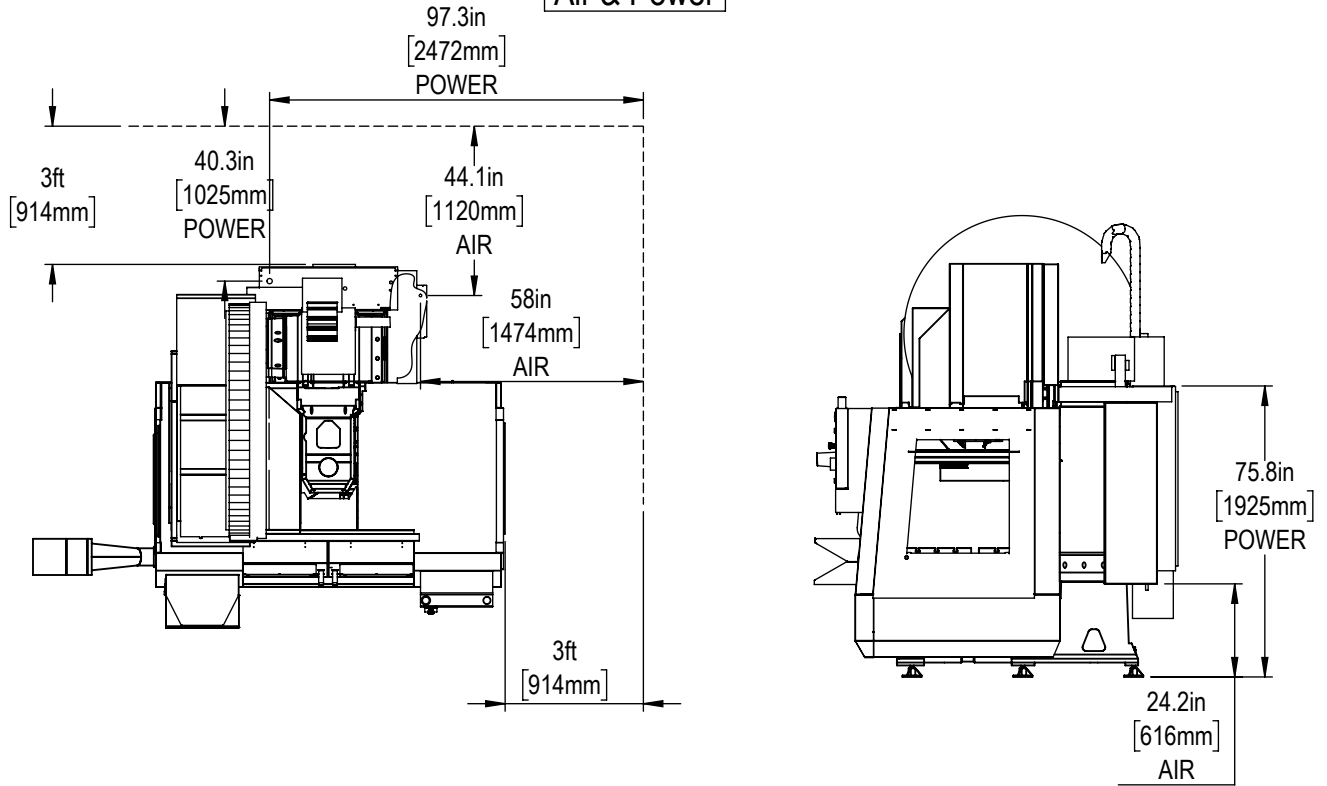


Shipping Dimensions

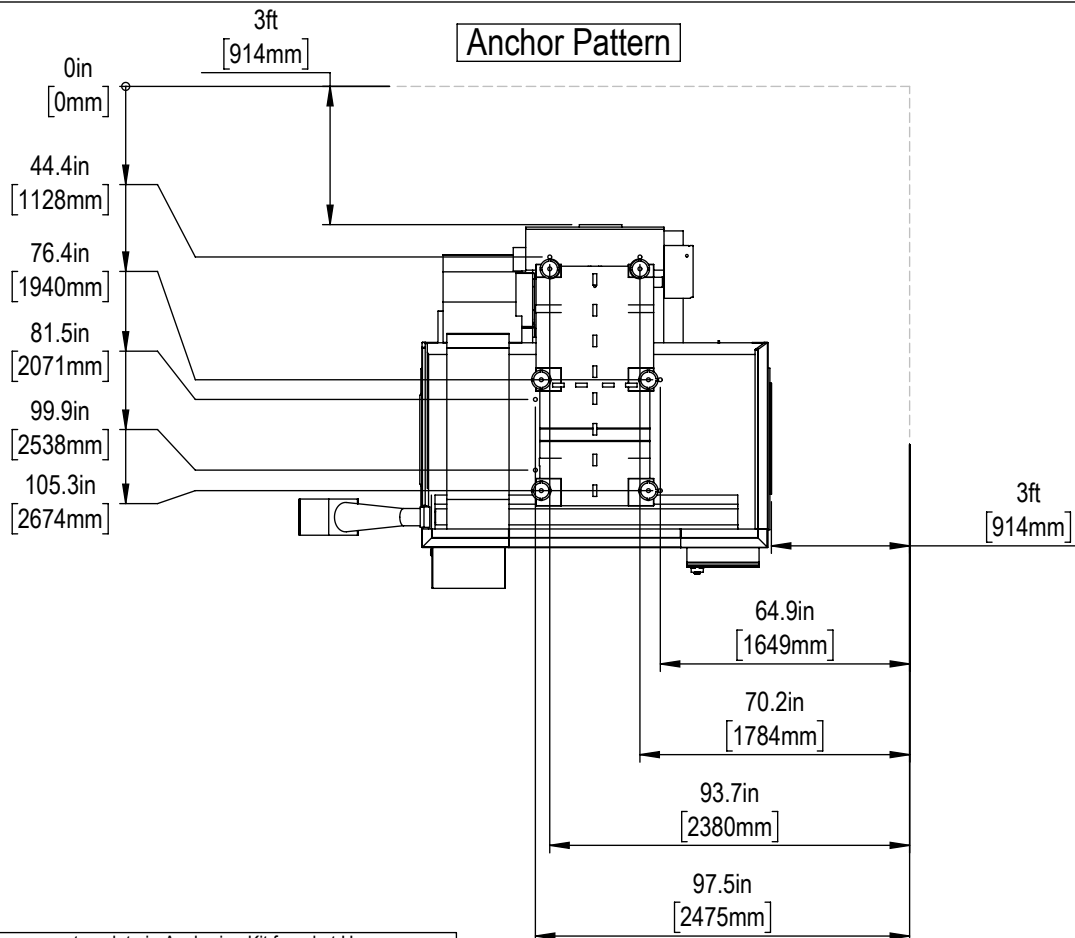


*All Height Dimensions Based on Suggested Leveling Pad Height

Air & Power



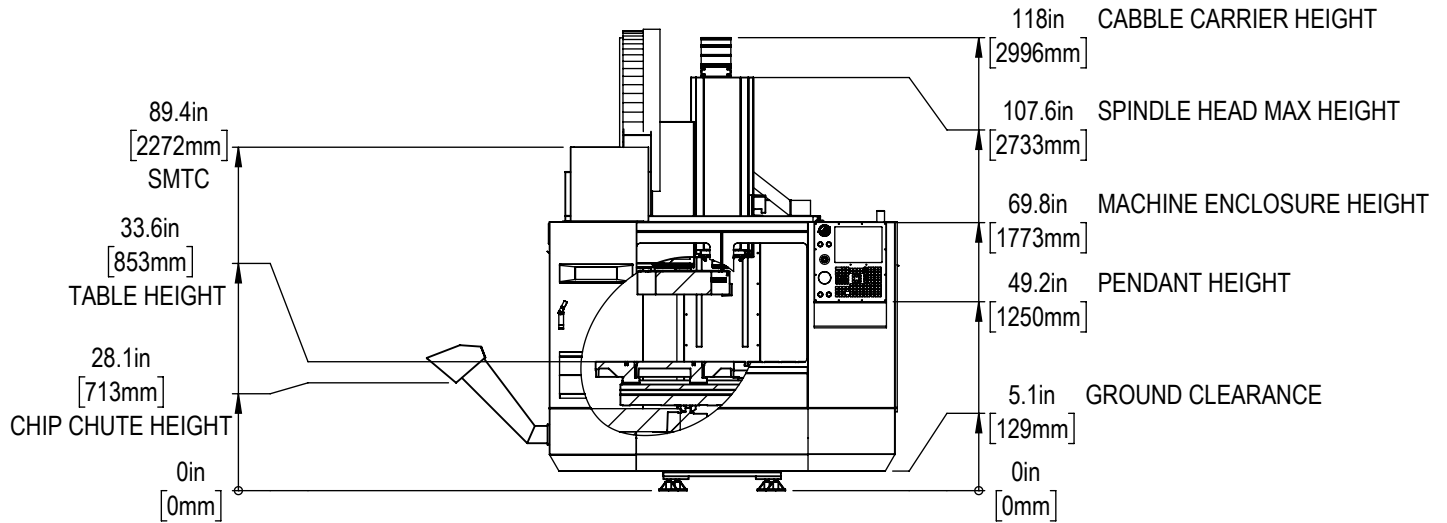
Anchor Pattern



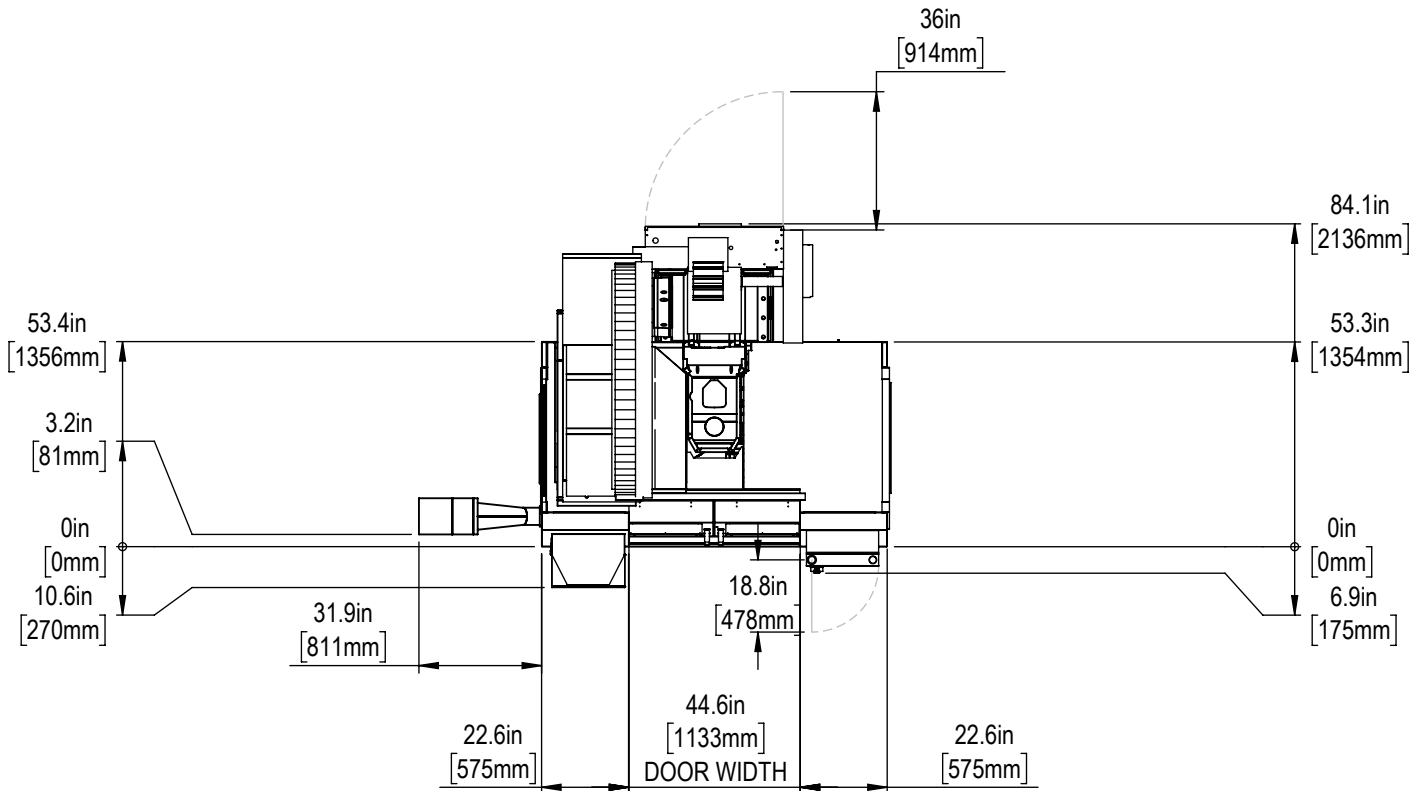
For precise locations please use template in Anchoring Kit found at Haascnc.com



Height Breakdown



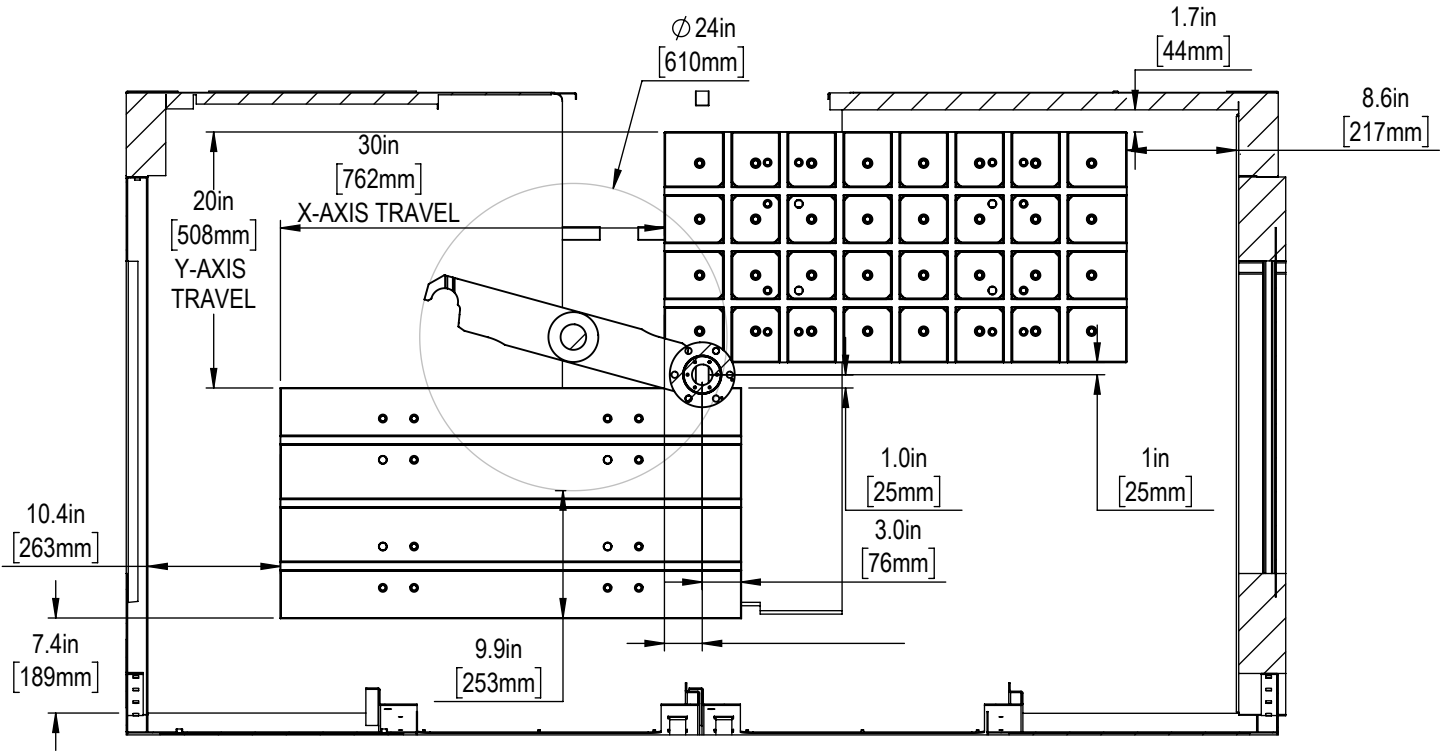
Width Breakdown



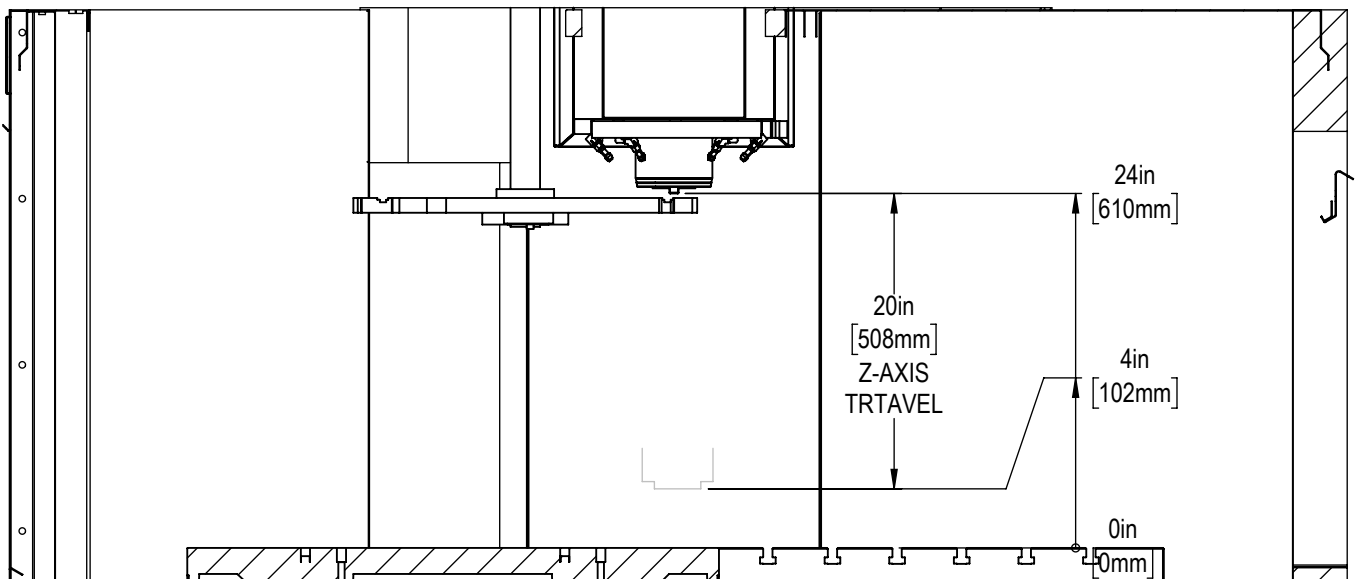
Maintain 3 feet [915mm] clearance to the nearest obstruction around all sides of machine perimeter for maintenance access



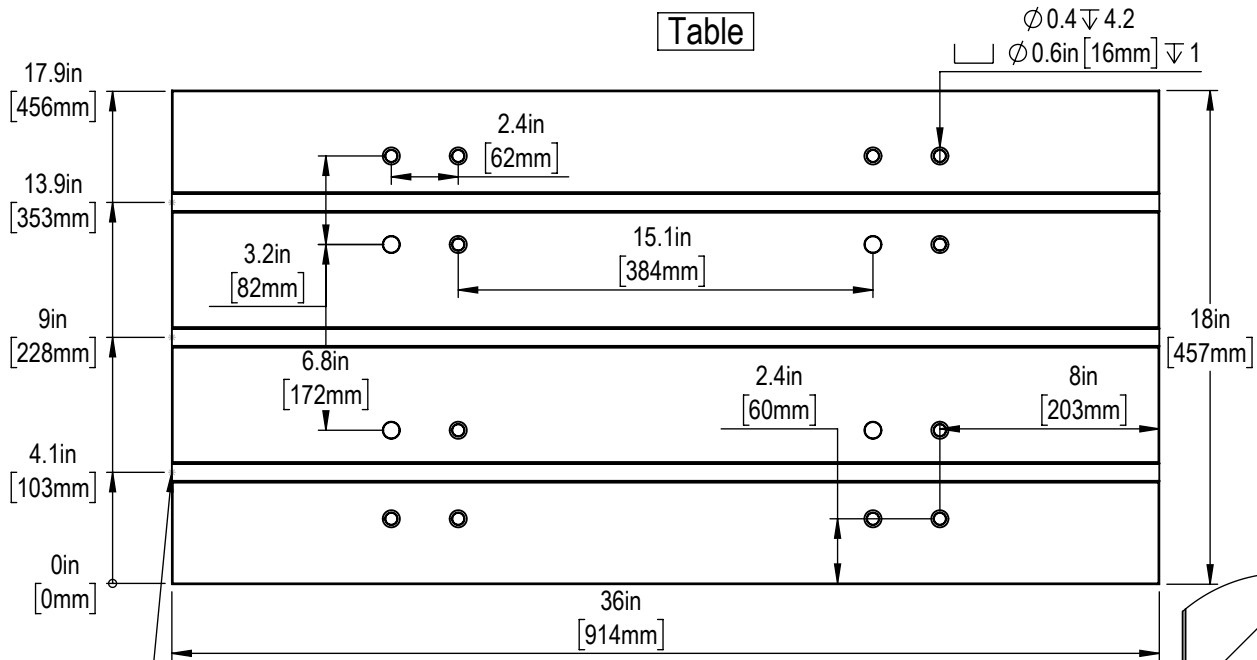
X&Y-Axis Travel



Z-Axis Travel

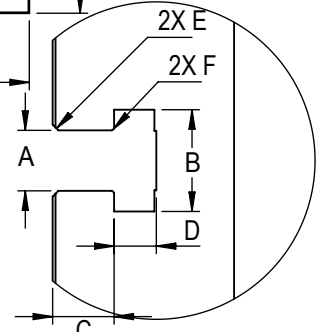


Table



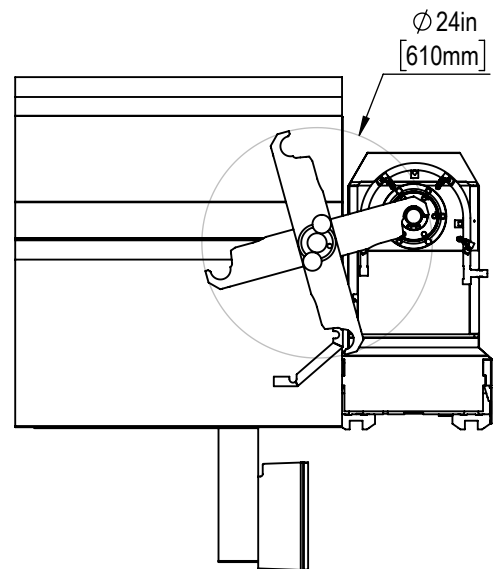
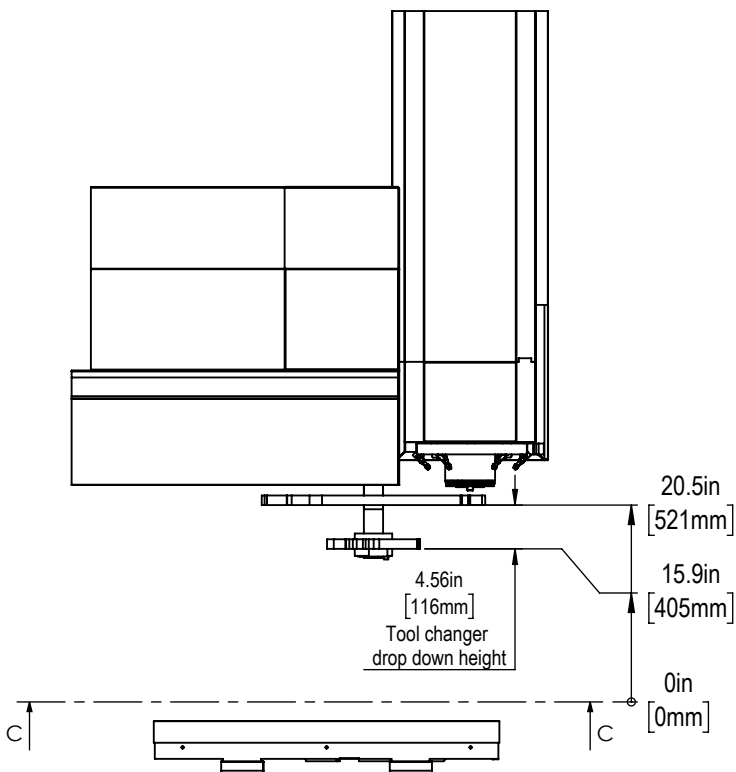
16mm T-Slots

Slot Size	A	B	C	D	E	F
12mm	$0.438^{+0.002}_{-0.000}$	0.76 ± 0.02	0.310 ± 0.010	0.318 ± 0.010	$0.03 \times 45^\circ$	$0.020 \times 45^\circ$
16mm	0.628 ± 0.002	1.06 ± 0.02	0.640 ± 0.010	0.420 ± 0.010	$0.06 \times 45^\circ$	$0.020 \times 45^\circ$

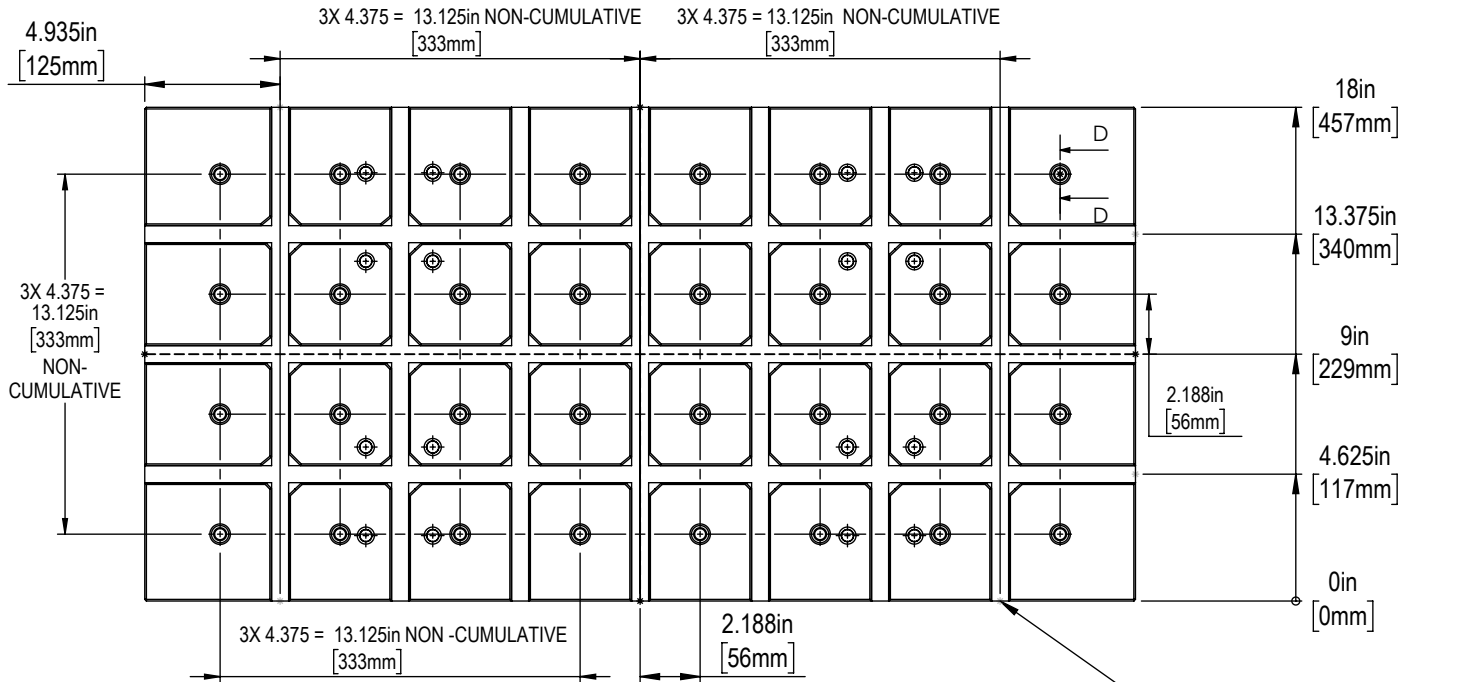


T-Slot Dimensions in inches

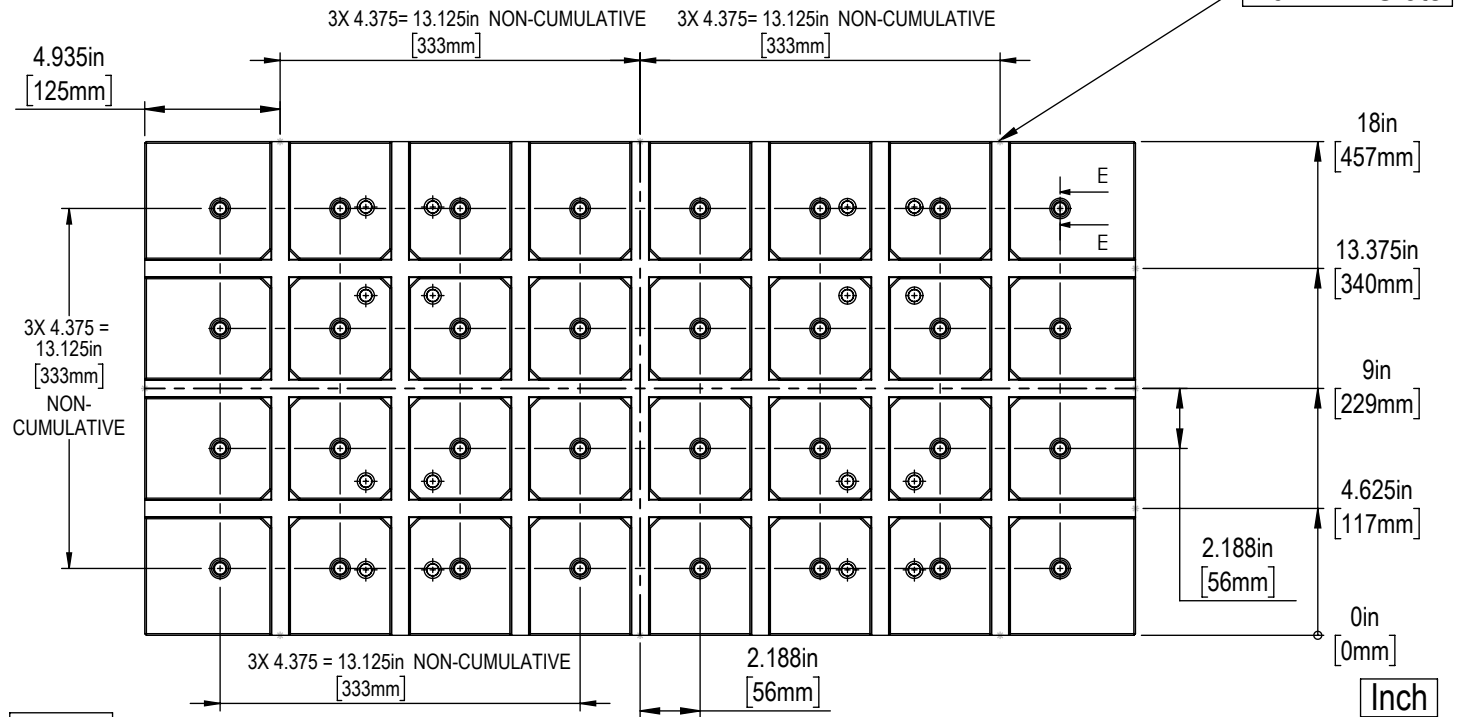
Tool Changer



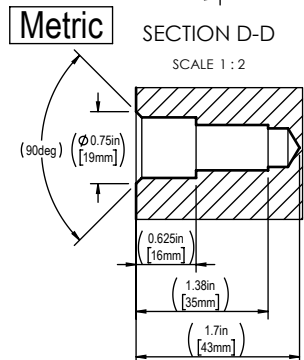
SECTION C-C
SCALE 1 : 20



16mm T-Slots



Inch



32X $\phi .404$ X 1.75 DP, CBORE $\phi .631/.632$
X .625 DP, THD M12 X 1.75 DEPTH 1.375
CSINK $\phi .75$ X 90 PER SECTION D-D

32X $\phi .422$ X 1.61 DP, CBORE $\phi .625/.626$
X .625 DP, THD 1/2-13 X 1.375 DP
CSINK $\phi .75$ X 90 PER SECTION E-E

