



Haas
F1 Team
OFFICIAL MACHINE TOOL

INTRODUCING THE ALL-NEW

DC-1

Our **NEW HIGH-SPEED DRILL CENTER**,
with a **TURRET-STYLE** tool changer
and rear chip discharge, is here.





Maximize your shop space for **HIGH-VOLUME PRODUCTION**



The DC-1 is a traditional-style drill/tap machine with a 10,000-rpm BT30 spindle and high-speed turret-style tool changer, to minimize cut-to-cut times and shorten cycle times. Choose the optional 15,000-rpm or 20,000-rpm spindle to cut production times even further.

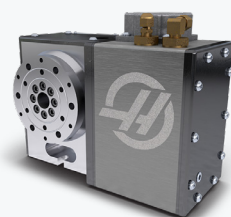
The compact footprint and rear chip discharge of the DC-1 allow machines to be placed side-by-side to maximize floor space, while providing easy side access for automation systems. The machine's one-piece, extra-wide base provides stable support for heavier parts and fixtures, and the wide-stance triangulated column increases overall rigidity.

Unlock 4th- and 5th-axis productivity with **EASY ROTARY** INTEGRATION

Haas rotaries have been the industry standard for more than 40 years, and all Haas rotary products offer seamless integration with Haas machines. Simply add the optional 4th- and 5th-axis drives to the DC-1 for easy, plug-and-play connectivity to Haas single- and dual-axis rotaries.



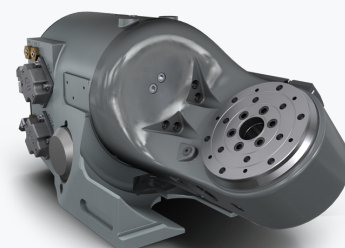
HA5CS
5C Collet Size
725 °/sec Max Speed
20 ft-lb Max Torque



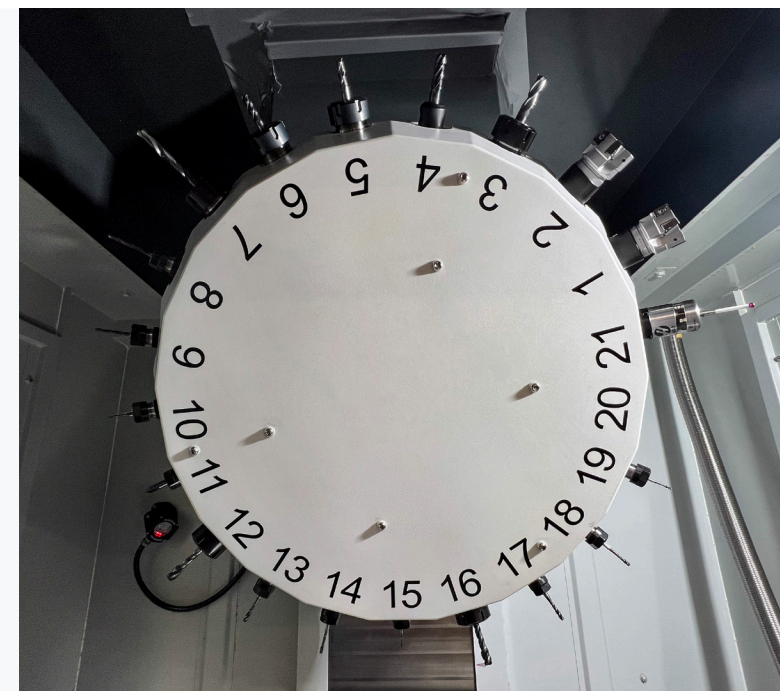
HRT100
100 mm Platter Size
300 °/sec Max Speed
35 ft-lb Max Torque



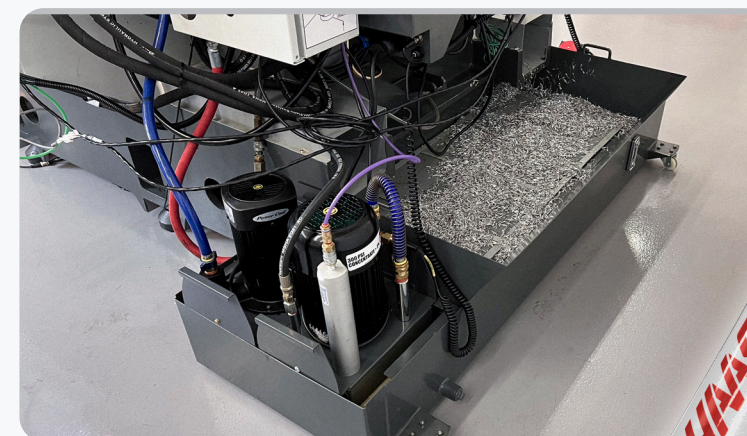
HRT160SS
160 mm Platter Size
500 °/sec Max Speed
110 ft-lb Max Torque



TRT160
160 mm Platter Size
104 °/sec Max Speed
112 ft-lb Max Torque



FEATURING A 21-TOOL TURRET-STYLE CHANGER AND EFFICIENT REAR CHIP DISCHARGE



AUTOMATION READY

Take the DC-1's productivity to the next level by adding one of our fully integrated automation systems – like the Haas HC10 Cobot, or our Compact Automatic Parts Loader. These systems operate seamlessly from the Haas control for reliable, unattended operation.



Scan here or go to www.HaasCNC.com/DC1 to learn more about all the great features of the new DC-1!

DC-1 SNAPSHOT

30
TAPER

- 3/4/5-AXIS
- 10K-20K RPM
- 21-TOOL CAPACITY

TRAVELS

23.6" x 17.7" x 13" (xyz)
600 x 450 x 330 mm

FEATURES AND OPTIONS

- 10,000-rpm BT30 spindle (15,000-rpm or 20,000-rpm optional)
- High-speed turret-style tool changer, 21 tools
- Available auto window for easy automation
- Rear chip discharge with front chip flush
- Compact footprint



300,000 CONTROLS CAN'T BE WRONG.



Scan this QR Code to discover why the Haas Control is the most user-friendly CNC control in the industry.

Designed and built in-house, the Haas control is optimized specifically for Haas machine tools. It is fast, smart, and powerful, with a simple user interface and consistent, intuitive navigation that make it easy to learn and use. With more than 300,000 Haas controls in use worldwide, it clearly is an industry standard.

Features include:

- Touchscreen Interface
- Dedicated Keypad
- One-Button Features
- Multi-Function Jog Handle
- 15" Color LCD Screen
- Ethernet Interface
- USB Port
- M130 Media Player
- Advanced Tool Management
- 1 GB Program Memory
- Power-Failure Detection
- HaasConnect Mobile Monitoring
- WiFi Connectivity
- Safe Run
- Surge Protection
- HaasDrop Wireless File Transfer



DC-1 DETAILS & SPECIFICATIONS

TRAVELS

X Axis	23.6 in (600 mm)
Y Axis	17.7 in (450 mm)
Z Axis	13.0 in (330 mm)

SPINDLE

Max Rating	15 hp (11.2 kW)
Max Speed	10,000 rpm (15k, 20k opt)
Max Torque	14 ft-lbf @ 2500 rpm (19.0 Nm @ 2500 rpm)
Drive System	Inline Direct Drive
Taper	.BT30

TABLE

Length	27.6 in (700 mm)
Width	16.5 in (420 mm)
T-Slot Width	0.550 in (14 mm)
T-Slot Center Distance	4.92 in (125 mm)
Number of Std T-Slots	3
Max Weight on Table	.550 lb (250 kg)

FEEDRATES

Max Cutting	833 ipm (30.5 m/min)
Rapids on X	.1890 ipm (48.0 m/min)
Rapids on Y	.1890 ipm (48.0 m/min)
Rapids on Z	.1890 ipm (48.0 m/min)

TOOL CHANGER

Type	Turret Style
Capacity	21
Max Tool Diameter (full)	2.4 in (60 mm)
Max Tool Diameter (empty)	.31 in (80 mm)
Max Tool Weight	.4 lb (2 kg)
Tool-to-Tool Time (avg)	1.5 s
Chip-to-Chip Time (avg)	2.5 s

GENERAL

Coolant Capacity	40 gal (151 L)
------------------	----------------

Specifications subject to change without notice. Not responsible for typographical errors. Machines shown with optional equipment. Actual product appearance may differ. Pricing subject to change without notice.

DON'T FORGET THE TOOLING!

We have thousands of high-quality tooling products at unbeatable low prices . . . and we're adding more every day at www.HaasTooling.com

Haas Automation, Inc. USA
2800 Sturgis Rd., Oxnard, CA, USA
www.HaasCNC.com

Haas Automation, Inc. EUROPE
Mercuriusstraat 28 1930, Zaventem Belgium
www.HaasCNC.com

