



Haas
F1™ Team
OFFICIAL MACHINE TOOL

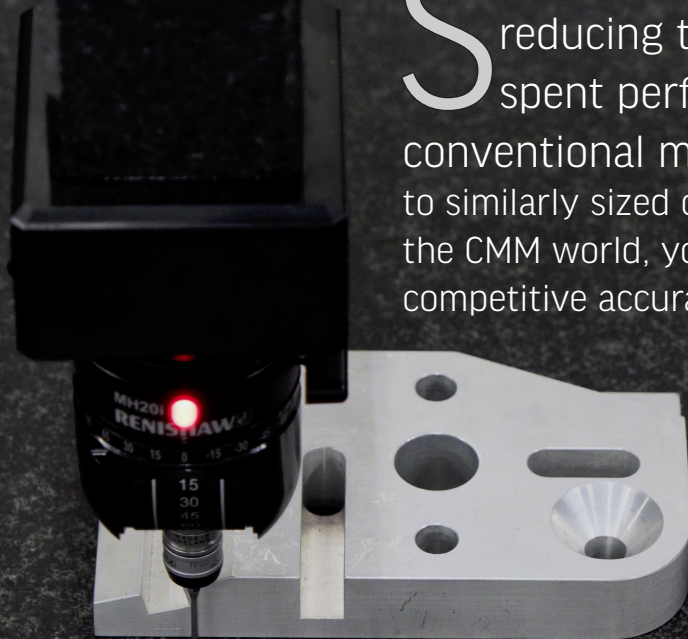


PRODUCT FOCUS

HMM430

COORDINATE MEASURING MACHINE

Streamline your quality control by reducing the amount of time spent performing inspections with conventional metrology tools. Compared to similarly sized options from the big names in the CMM world, you'll find the HMM430 offers competitive accuracy at an unbeatable Haas price.



STARTING AT:

€ **49.995**



Scan here or contact your local HFO for more details.



PRODUCT FOCUS

HMM430 COORDINATE MEASURING MACHINE

DETAILS AND SPECIFICATIONS

Measuring volume: 15.7" x 16.9" x 13.7" (400 x 430 x 350mm) (XYZ)

Granite bed area: 23.2" x 33.5" (590 x 850mm)

Probe body: Renishaw TP20 with standard force module

Standard Renishaw Probe Tips-

- Uses standard, off-the-shelf Renishaw probe tips – compatible with Renishaw's range of M2 thread probe styli.
- Four probe tips included – 1, 2, 3, & 4mm diameter, all 20mm length.

Linear scale resolution: 0.0004" (0.001mm)

Accuracy:

- Linear accuracy: 2 - 6 μm (0.00008" - 0.00024")
- Volumetric accuracy: 4 - 11 μm (0.00016" - 0.00043")

Max part weight: 265 lb (120 kg)

Renishaw control package:

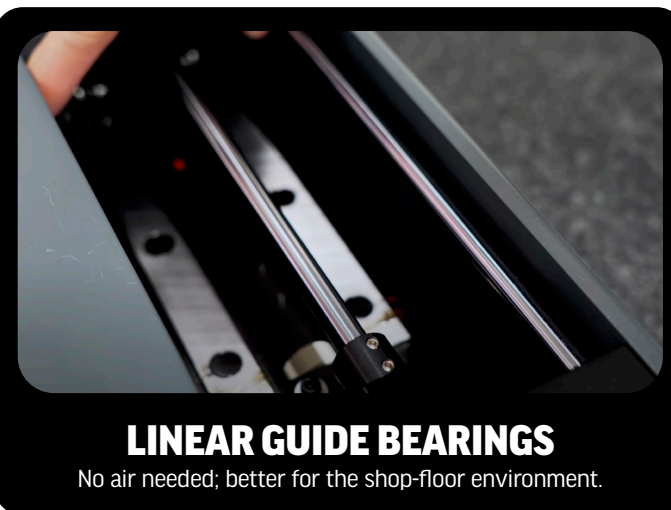
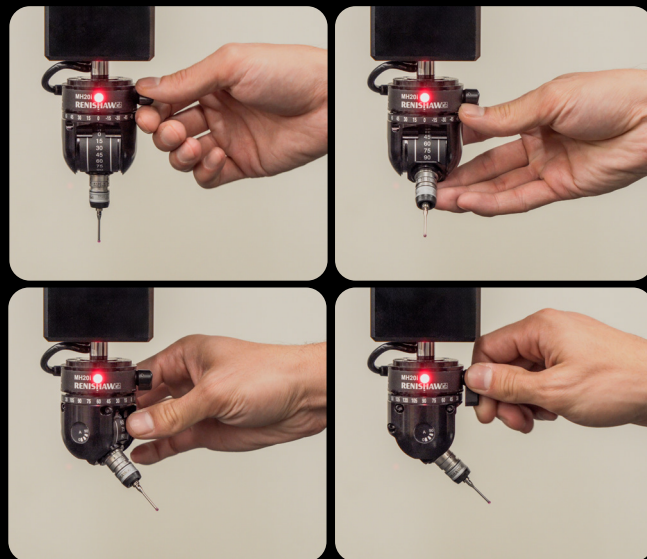
- Main controller, motor driver, scales, and probe head package are all standard Renishaw components.

TouchDMIS measuring software:

- TouchDMIS is a user-friendly measuring software package.
- A full software license is included with the purchase of the machine. The license seat does not expire.

RENISHAW MH20I PROBE HEAD

- Manually indexable – machine motion is 3-axis, and the head orientation can be changed by hand, in 15° increments
- Each index position is repeatable and locks in place:
 - A axis moves from 0 to 90°
 - B axis moves from -180° to +180°



LINEAR GUIDE BEARINGS

No air needed; better for the shop-floor environment.



COMPUTER + PERIPHERALS INCLUDED

Monitor, keyboard, mouse, speakers, and uninterruptible power supply (UPS) are included with the computer.



JOYSTICK CONTROL

Quick measurements can be taken without CAD models using the joystick to hand-jog the probe.



HMM430, COORDINATE MEASURING MACHINE

Part #: 08-2034

STARTING AT:

€ 49.995

Full CNC inspections with CAD models

- Accepts neutral CAD file formats – STEP and IGES
- Use CAD model features to help create/direct inspection routines

Includes a 12-month warranty from ship date, supported by your local Haas Factory Outlet.

FREQUENTLY ASKED QUESTIONS

What inspection software is included, and are other options available?

- The HMM430 includes a full license to TouchDMIS, a user-friendly touch-screen capable software package. TouchDMIS has all the inspection features and tools you need to get started. Other Renishaw-compatible software packages can also be used in place of TouchDMIS.

Why is the measuring volume smaller than the bed size? Is it possible to measure larger parts?

- The measuring volume is smaller than the volume between the bed and gantry, because extra clearance is needed for different probe-head angles and stylus configurations. Technically, you could fit a larger part on the bed, if the features of interest fit within the measuring volume, even though the rest of the part doesn't. This would be a fringe case.

Does the HMM430 require calibration?

- The HMM430 comes calibrated from the manufacturer. Your local HFO only needs to verify the accuracy at installation. If recalibration is needed, it should be performed by a certified 3rd-party CMM calibration service. Annual recalibration typically is required for ISO certification.

What does the 430 stand for in the model name?

- The "430" designation represents the Y-axis travel: 430mm.

Can I install a 3rd-Party Measuring Software if I decide to switch from the one that comes included with the HMM430?

- Yes, the HMM430 is compatible with other measuring software. However, it is the customer's responsibility to verify compatibility by consulting the software manufacturer to determine if their software supports the Renishaw UCC protocol (I++ DME) and is compatible with the UCC server as a controller.

HMM430 COORDINATE MEASURING MACHINE



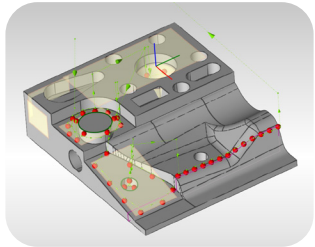
Touch-Screen Capabilities

Experience metrology at your fingertips! Along with standard monitors, TouchDMIS is fully compatible with touchscreen monitors, providing a touch-enabled interface that supports large icons and intuitive gestures such as swipe and pinch-to-zoom. Users can easily navigate features, create measurement programs, capture data, and generate reports—all through simple touch interactions.

Unlock next-level efficiency with TouchDMIS, the dimensional metrology software meticulously engineered to revolutionize your Coordinate Measuring Machine (CMM) inspection process. With its cutting-edge interface and effortlessly intuitive workflow, TouchDMIS empowers your team to maximize productivity, accelerate results, and eliminate complexity from every measurement task.

Auto-Generated Measuring Path

Let intelligence take the lead. TouchDMIS transforms CMM inspections with smart, auto-generated paths that adapt to any part geometry or feature. Cut programming time by reducing operator input to boost your inspection efficiency – use your CMM to work smarter, not harder.

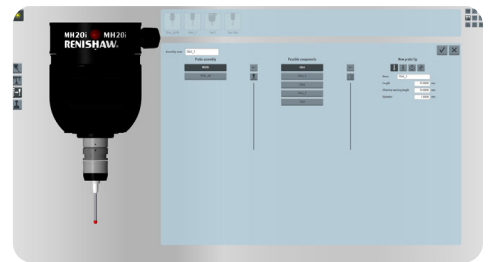
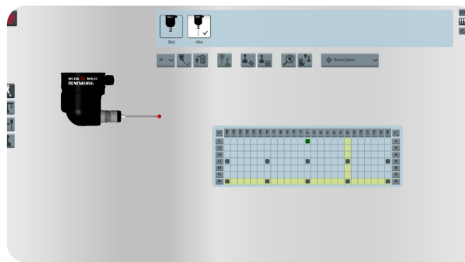


Touch Probe Manager

Take control in seconds! With the intuitive Touch Probe Manager, configuring and calibrating your probes is fast, easy, and hassle-free.

Enjoy a user-friendly interface designed for speed and simplicity—so you can focus on measuring, not managing.

Get set up and ready to go with just a few taps!



Self-Training and Certification Program

Empower yourself with knowledge—on your schedule!

TouchDMIS includes a self-paced training program for quick, easy learning. Earn an official **Operator Certificate** to boost your skills, confidence, and professional value.

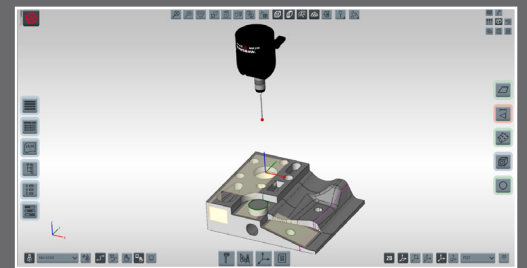
Learn fast, get certified, and unlock your full potential.



Effortless CAD Integration

Break free from format limitations! TouchDMIS seamlessly supports a wide range of native and neutral CAD formats—including industry standards like STEP and IGES by default.

Import even the most complex 3D models directly into your workspace and unlock the full potential of model-based inspection programming.



www.HaasCNC.com/Automation

www.HaasTooling.com

www.HaasCNC.com/Financing

Haas Automation, Inc. USA
2800 Sturgis Rd., Oxnard, CA, USA

Haas Automation Europe
Mercuriusstraat 28, B-1930 Zaventem, Belgium

Specifications subject to change without notice. Machines shown with optional equipment. Product appearance may differ. Not responsible for typographical errors.