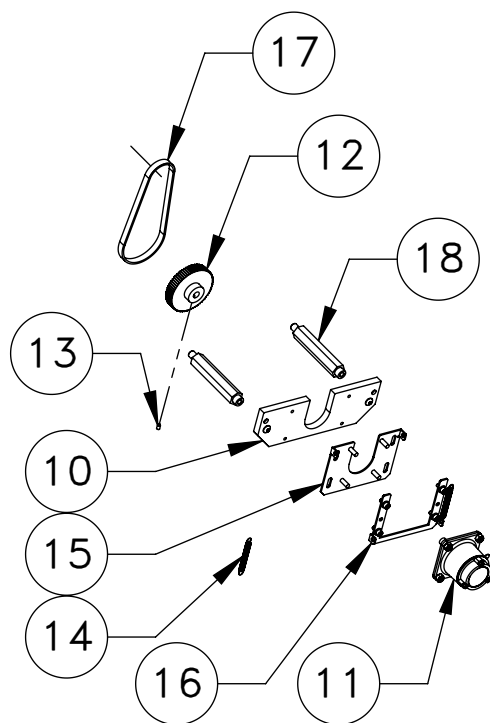


ITEM NO.	DESCRIPTION	QTY.
1	MACH SPNDL HOUSING ST REAR BALL	1
2	OIL MIST NOZZLE DOUBLE 5.35	1
3	NUT 1/2-13 JAM	1
4	FITG LBO-1/4 X NPT-1/8-M X 90 AIR ONLY	2
5	RING RETAINER SPINDLE	1
6	SPKT GT 8M-72-60	1
7	O-RING 2-265 BUNA	1
8	SHCS 3/8-16 X 1 1/4	6
9	SPINDLE CARTRIDGE	1
10	PLATE SPRING ENCDR MOUNT S30 BB	1
11	HAAS MAGNETIC ENCODER (SHAFTED)	1
12	TIMING PULLEY .375 BORE	1
13	SSS 8-32 X 1/4 HALF DOG MCMaster 92505A	1
14	SPRING EXT .29 OD X 1.5 LENCODER BELT TE	2
15	ENCODER SPRING MOUNT 50T GEARBOX 50/BX	1
16	CLAMP ENCODER SPRING MNT INLINE/SL-20	1
17	DRV BELT HTD 3MX9 396-3M-09	1
18	MOTOR ENCDR STAND OFF	2
19	SML LATH MAIN SPIND FAN	1
20	25-1920C 20 HP MOTOR COVER ST20	1
21	25-1916A MOTOR COVER BOTTOM ST20	1
22	FRONT MTR CVR NO TRANS	1
23	ADPTR KIT R/U CHP CLCTR ST20 5K	1
24	CLNT SEAL ADPTR ST30	1
25	GASKET COOLANT COLLECTOR HOUSING SL-20/3	1
26	CLNT COLL SEAL	1
27	HYDR CYL 6 M52 FOR SL-10 S/N 6 KITAGAWA	1
28	SPINDLE MOTOR 10HP BALDOR	1
29	SPKT HTD P44-3M-09	1
30	DRV BELT PGGT 8MX20 1280-8MGT-20	3
31	ADAPTER 8" CYLINDER DRAWTUBEALUM	1
32	DRAWTUBE HYD8	1
33	COOLANT COLLECTOR, S30	1
34	UPPER BELT SHROUD BOTTOM	1
35	UPPER BELT SHROUD ST30	1
36	LOWER BELT COVER	1
37	HYD CLSR ANTI ROT BRKT S	1
38	FITG REDUCER NPT-1-M X NPT-3/4-F	1
39	HOSE CLAMP	1
40	CLNT DRAIN FITTING	1



DETAIL A
SCALE 1 : 10