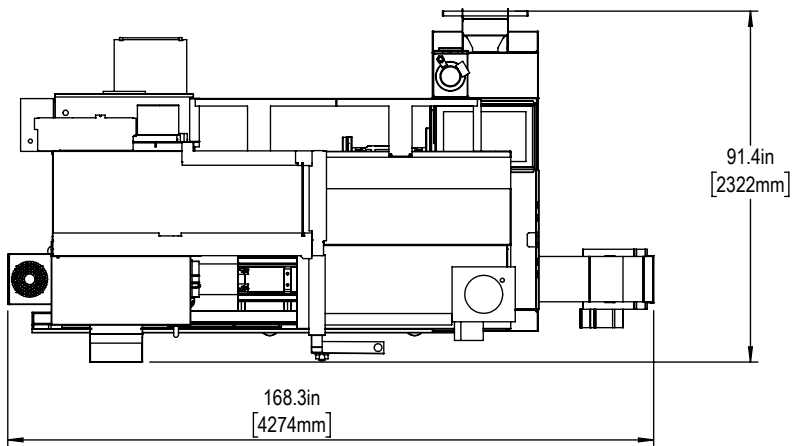
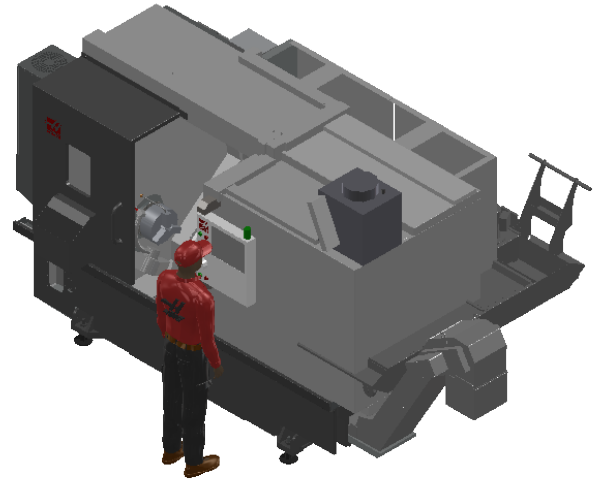
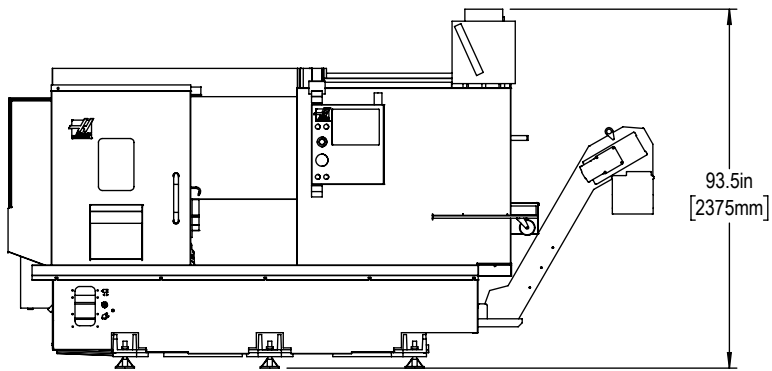
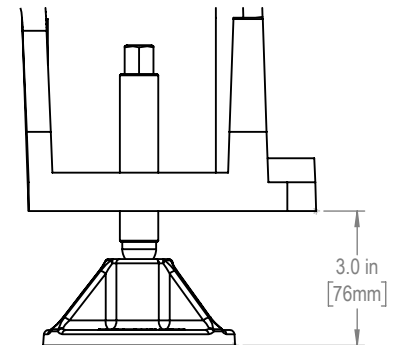




Installed Dimensions

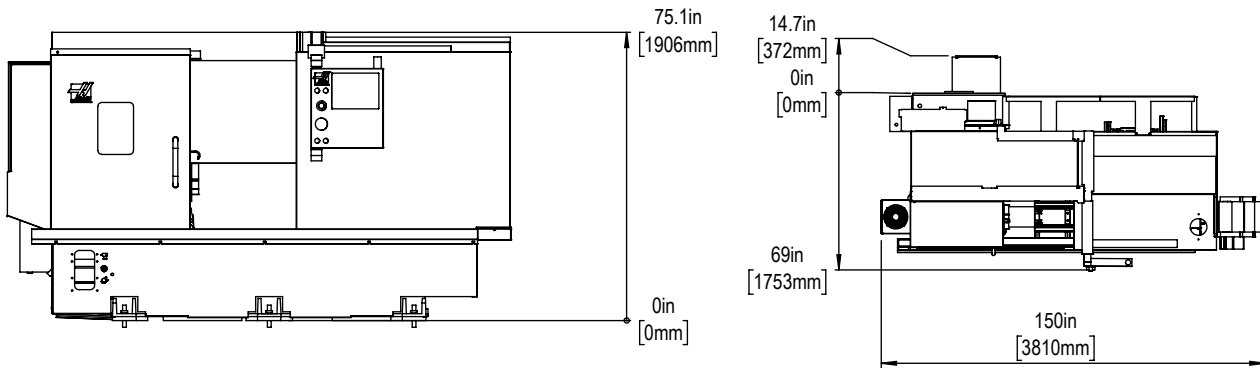


Leveling Pad Height

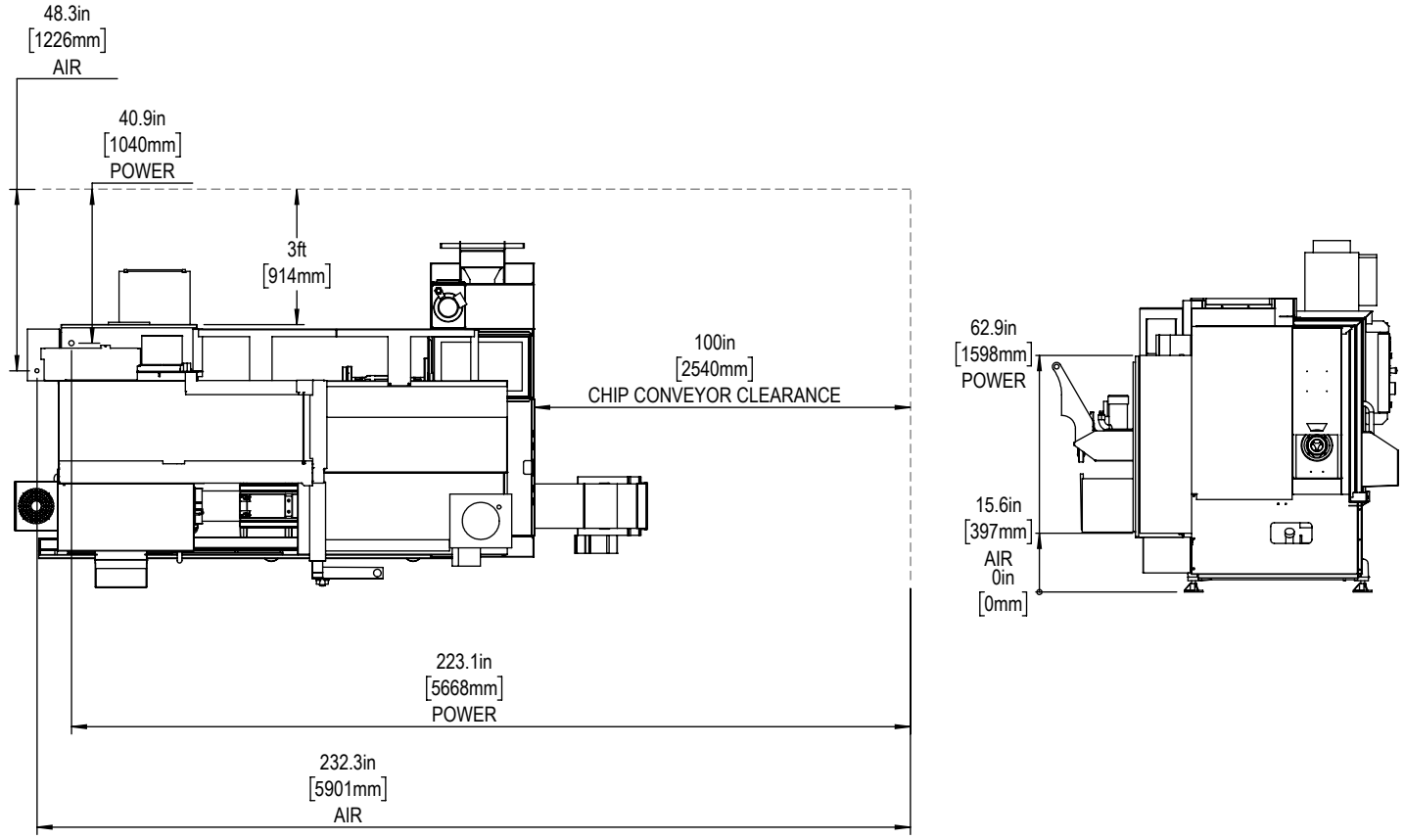


*All Height Dimensions Based on Suggested Leveling Pad Height

Shipping Dimensions



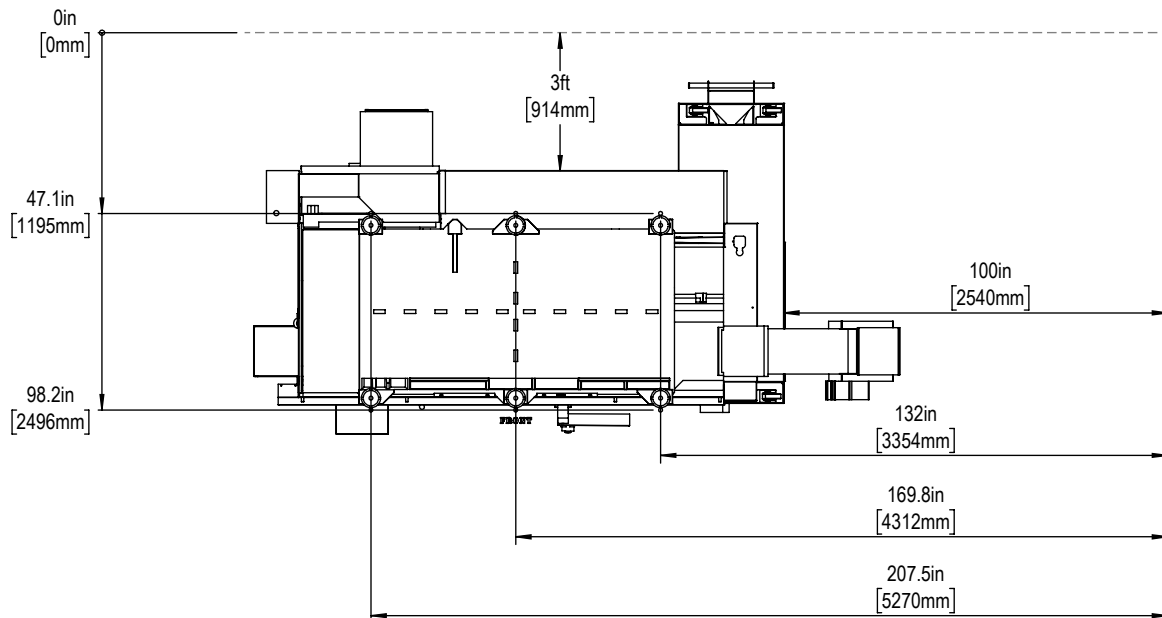
Air & Power



Anchor Pattern

Note:
Machine must be placed on one continous concrete slab. Slab should extend 12in [305mm] beyond anchor holes in all directions

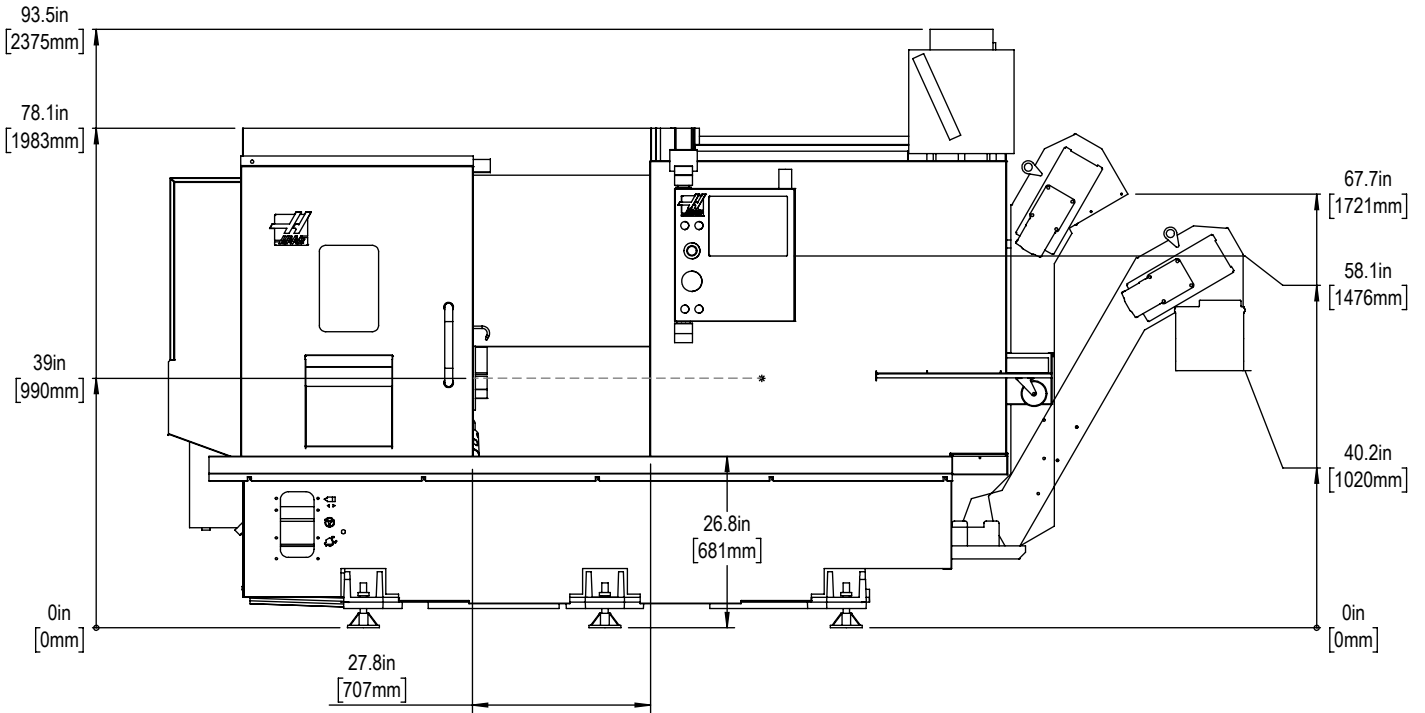
Anchor Hole Detail
 $\varnothing 0.625in [15.87mm]$
 $\nabla 2.0in [50mm]$
 $\nabla 2.25in [57mm]$



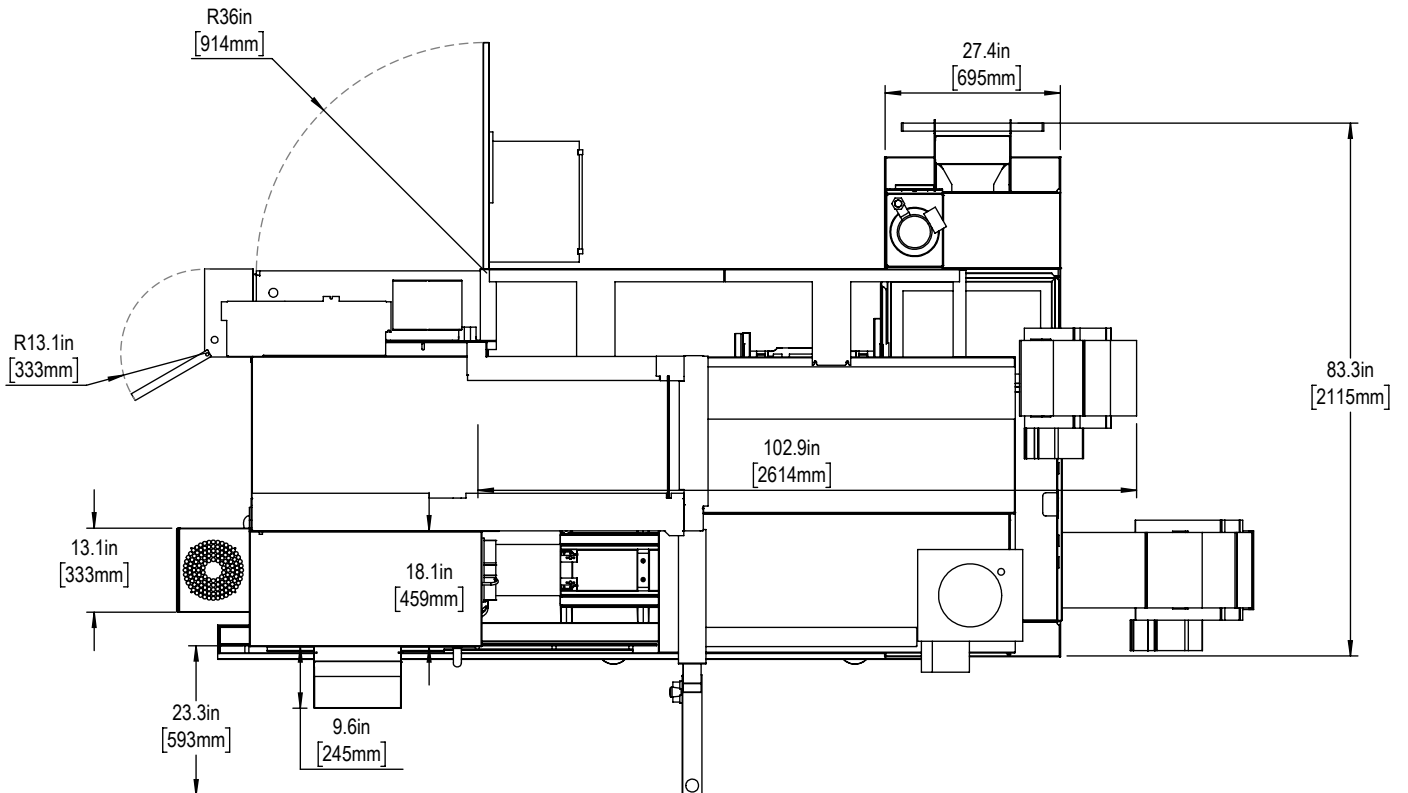
For precise locations and specifications please use template in Anchoring Kit found at Haascnc.com



Height Breakdown

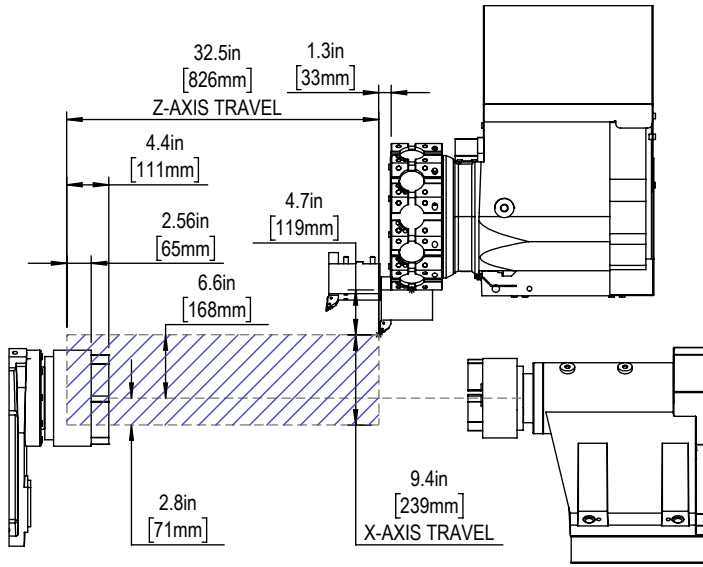


Width Breakdown

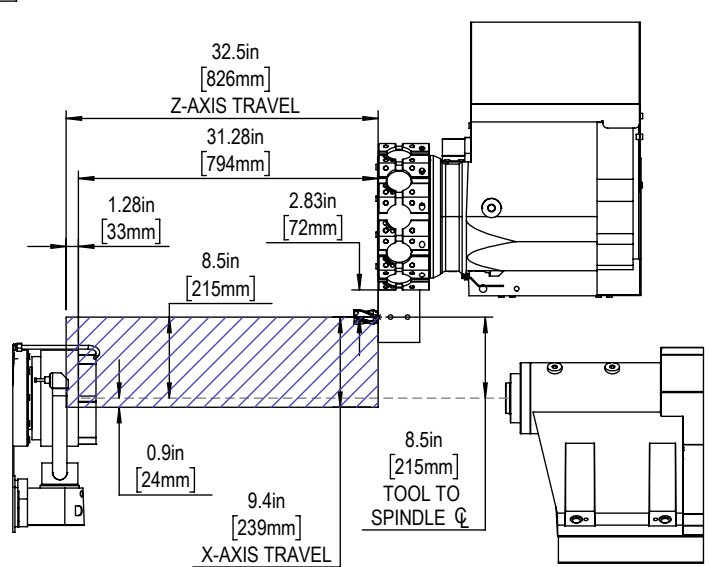


Parallel Plane Envelope Diagrams

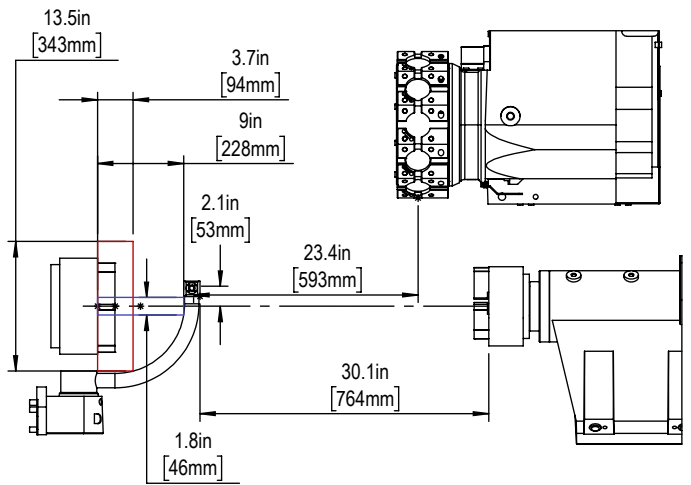
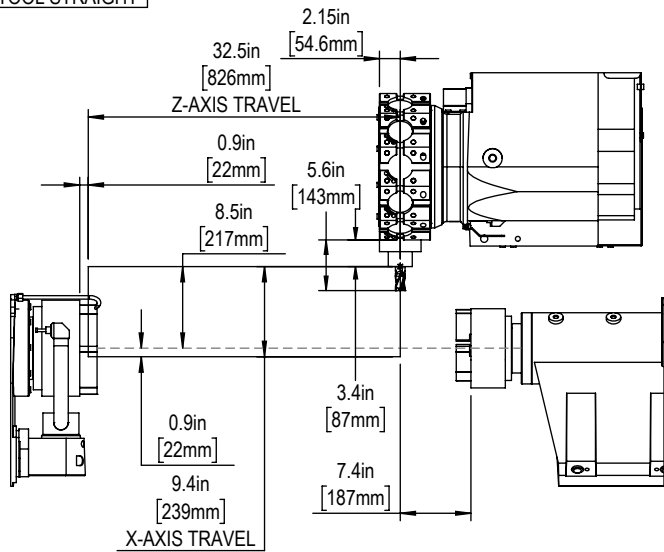
OD



ID

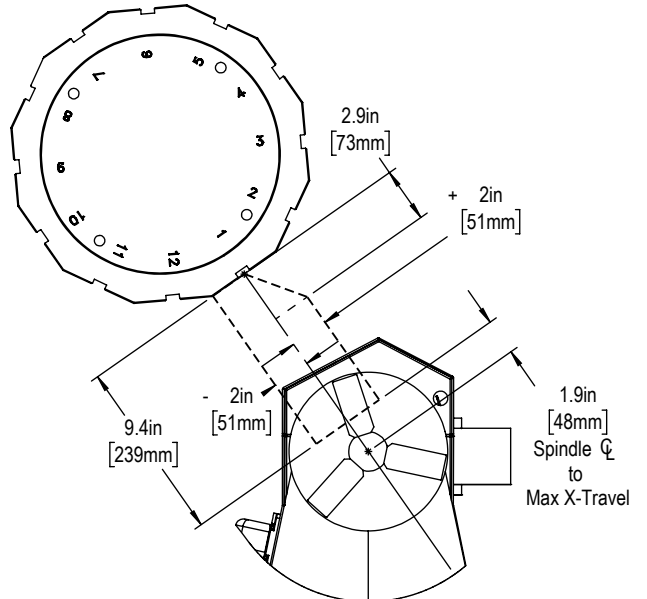
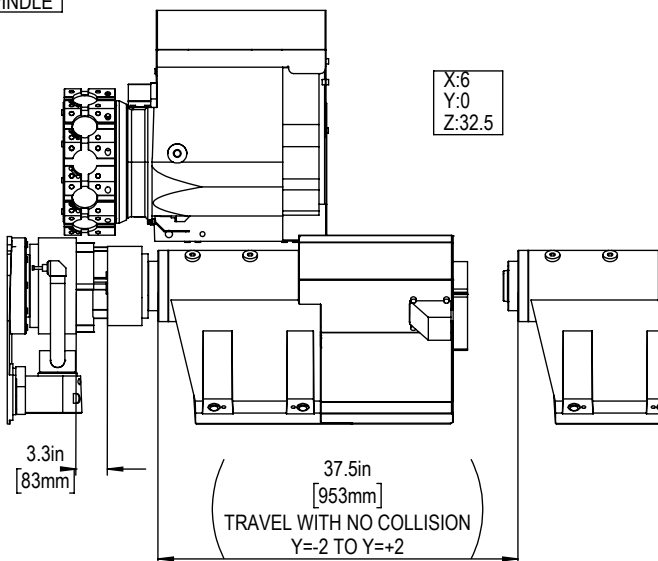


LIVE TOOL STRAIGHT

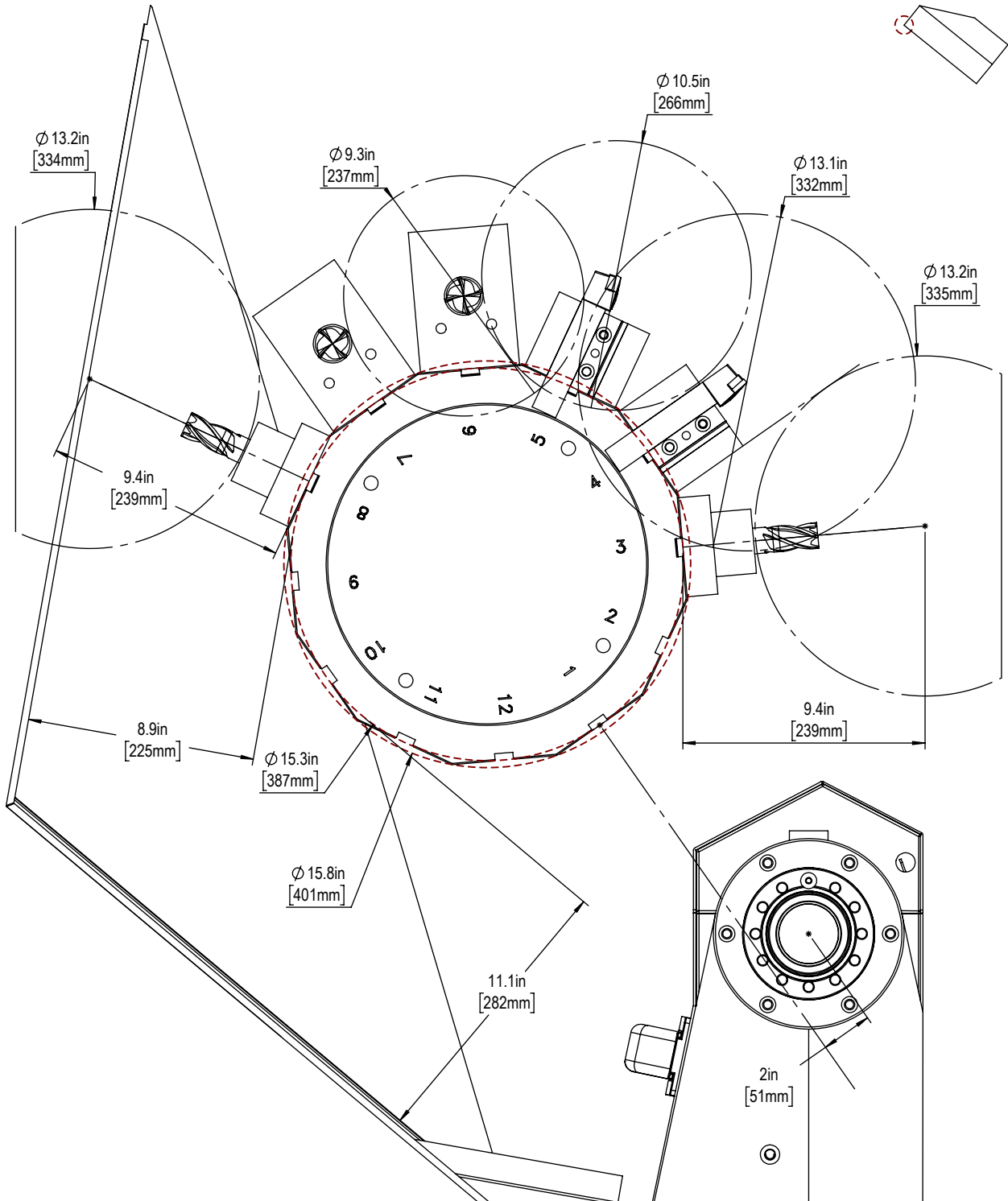


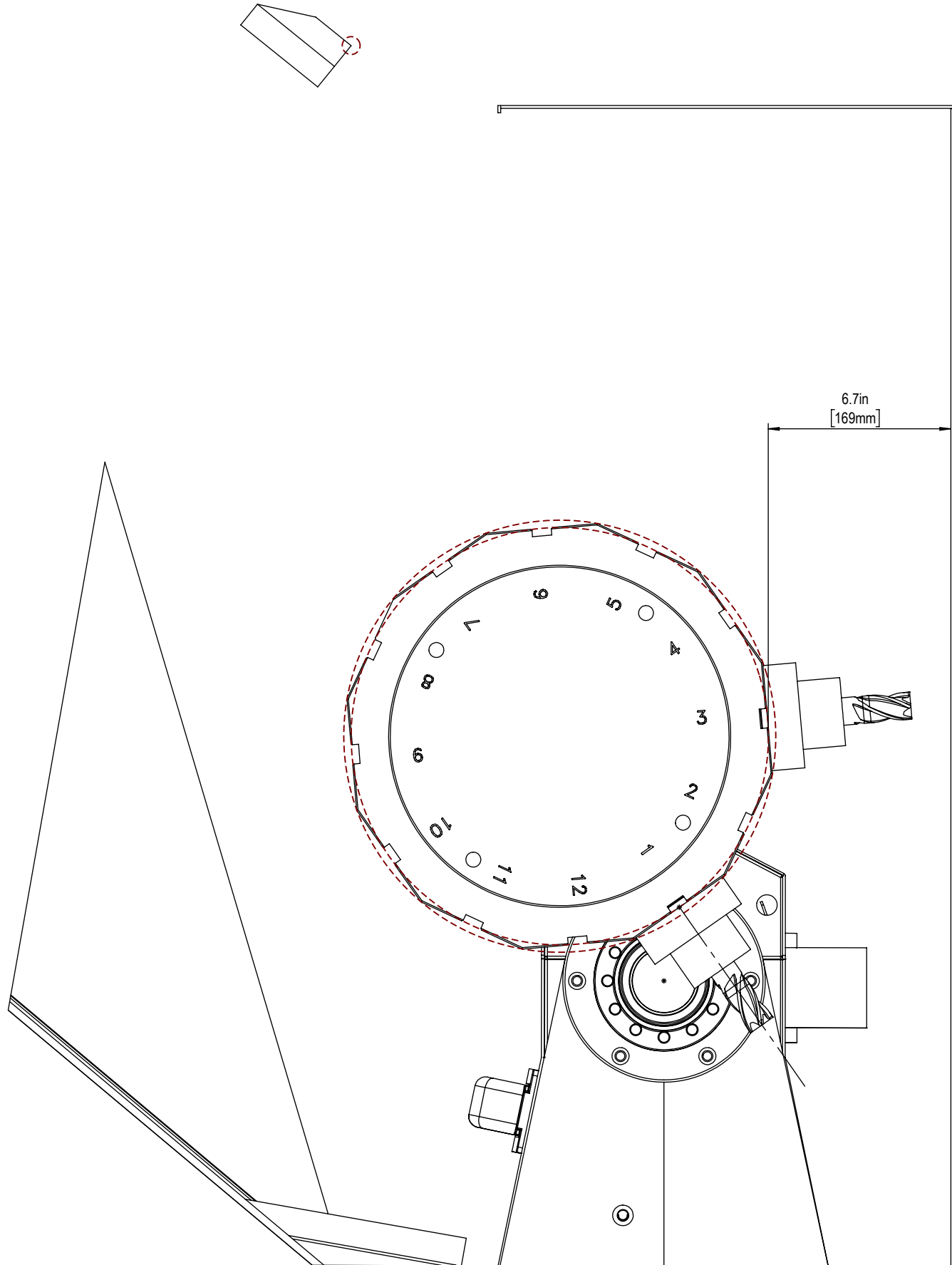
Caution: Avoid coming too close to ATP

SUB-SPINDLE

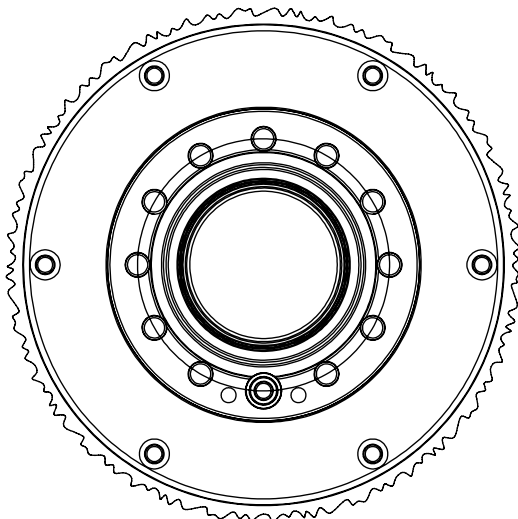
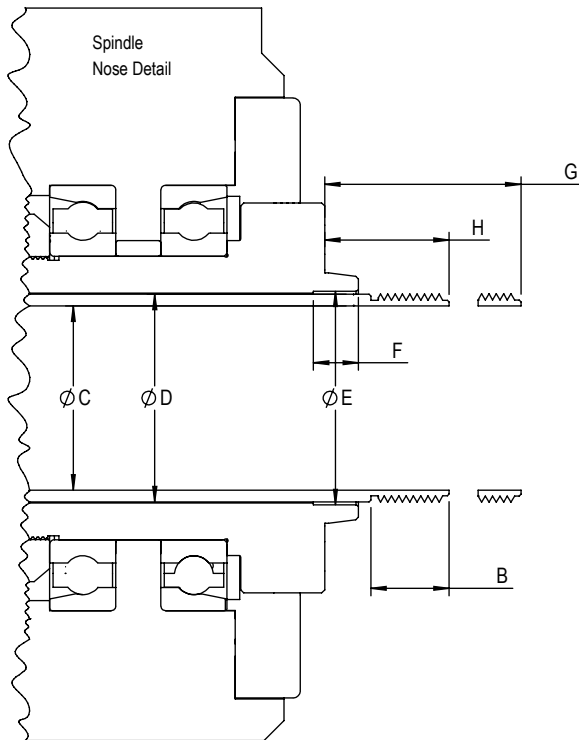
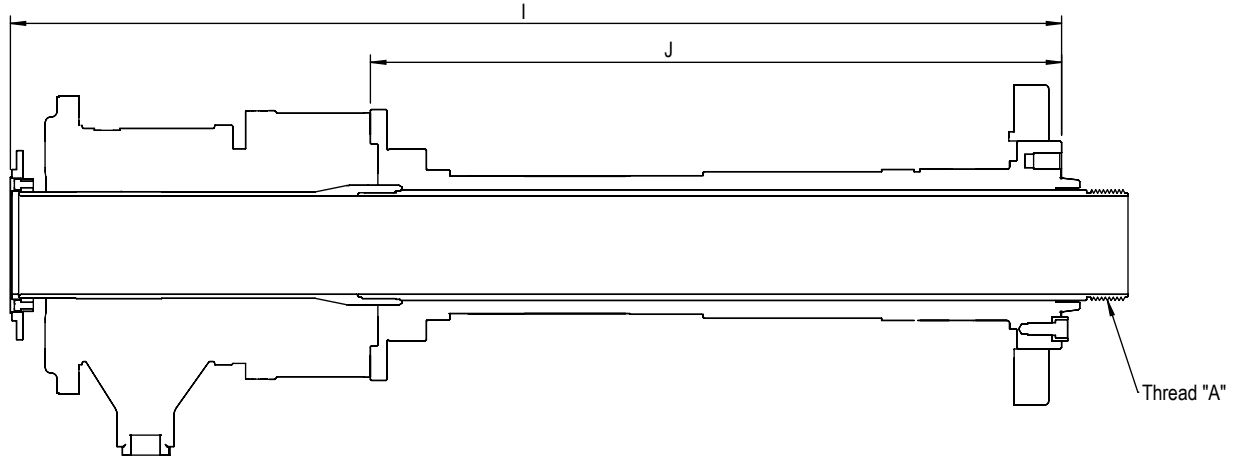


X=0
Y=-2
Z=0





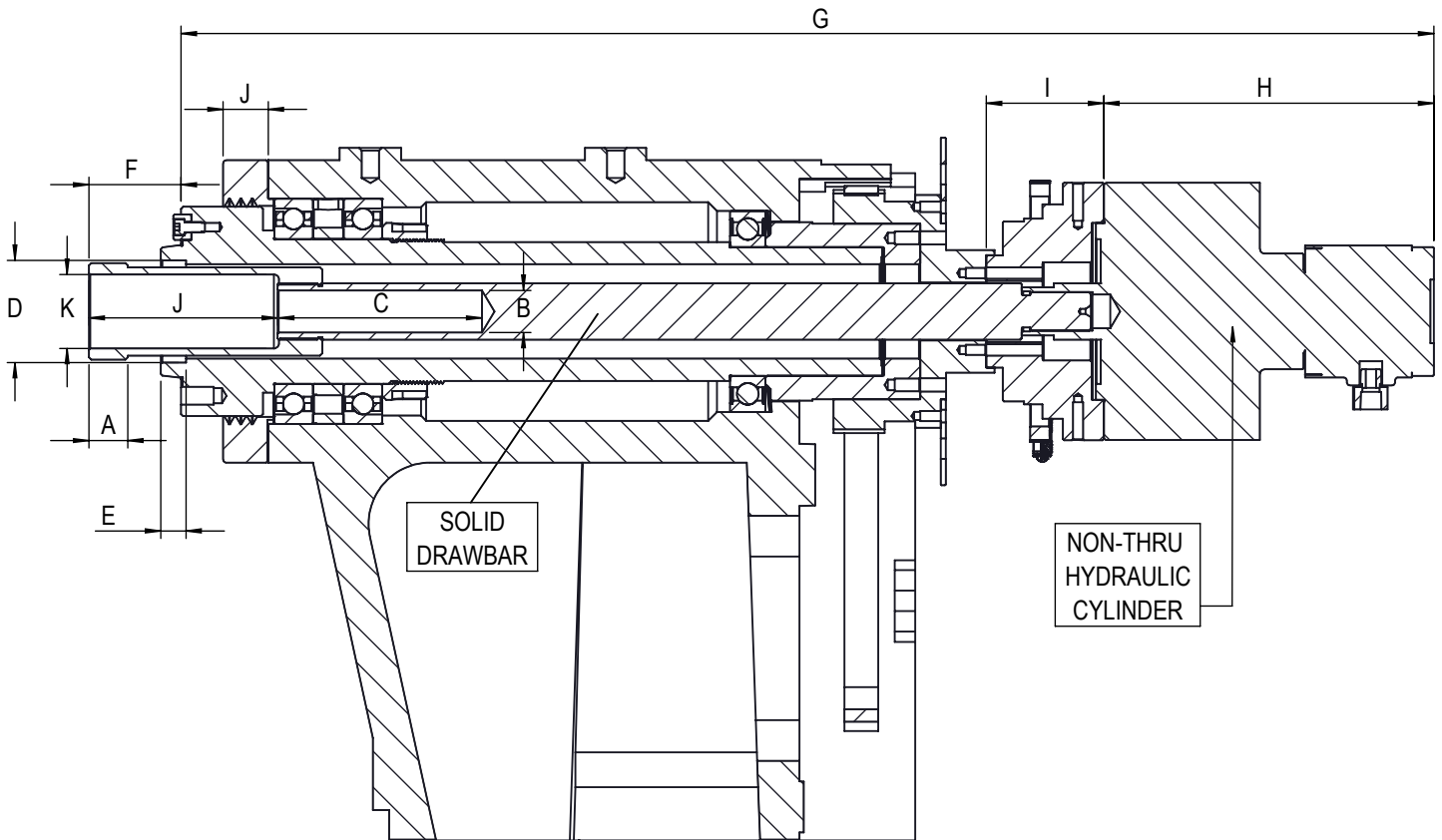
The longest tool allowed before Interference is 8.75" (222 mm). Nearest interference is Top of Door Frame.



Description	DIMENSION PARAMETER	DS-30Y	
		SAE (in)	METRIC (mm)
SPINDLE TYPE		A2-6	
THREAD TYPE	A	M85X2.0	
INTERNAL OR EXTERNAL		EXT	
LENGTH OF THREAD	B	1.42	36.1
DRAWTUBE INTERNAL Ø	C	3.03	77
DRAWTUBE EXTERNAL Ø	D	3.42	86.8
COUNTERBORE INTERNAL Ø	E	3.56	90.4
COUNTERBORE DEPTH	F	0.75	19.0
DRAWTUBE EXTENDED	G	2.61	66.3
DRAWTUBE RETRACTED	H	1.47	37.3
SPINDLE FACE TO BACK OF UNION	I	31.10	790
SPINDLE FACE TO UNION ADAPTOR	J	21.61	549

*Due to vendor variations discretion should be taken to verify validity of provided dimensions

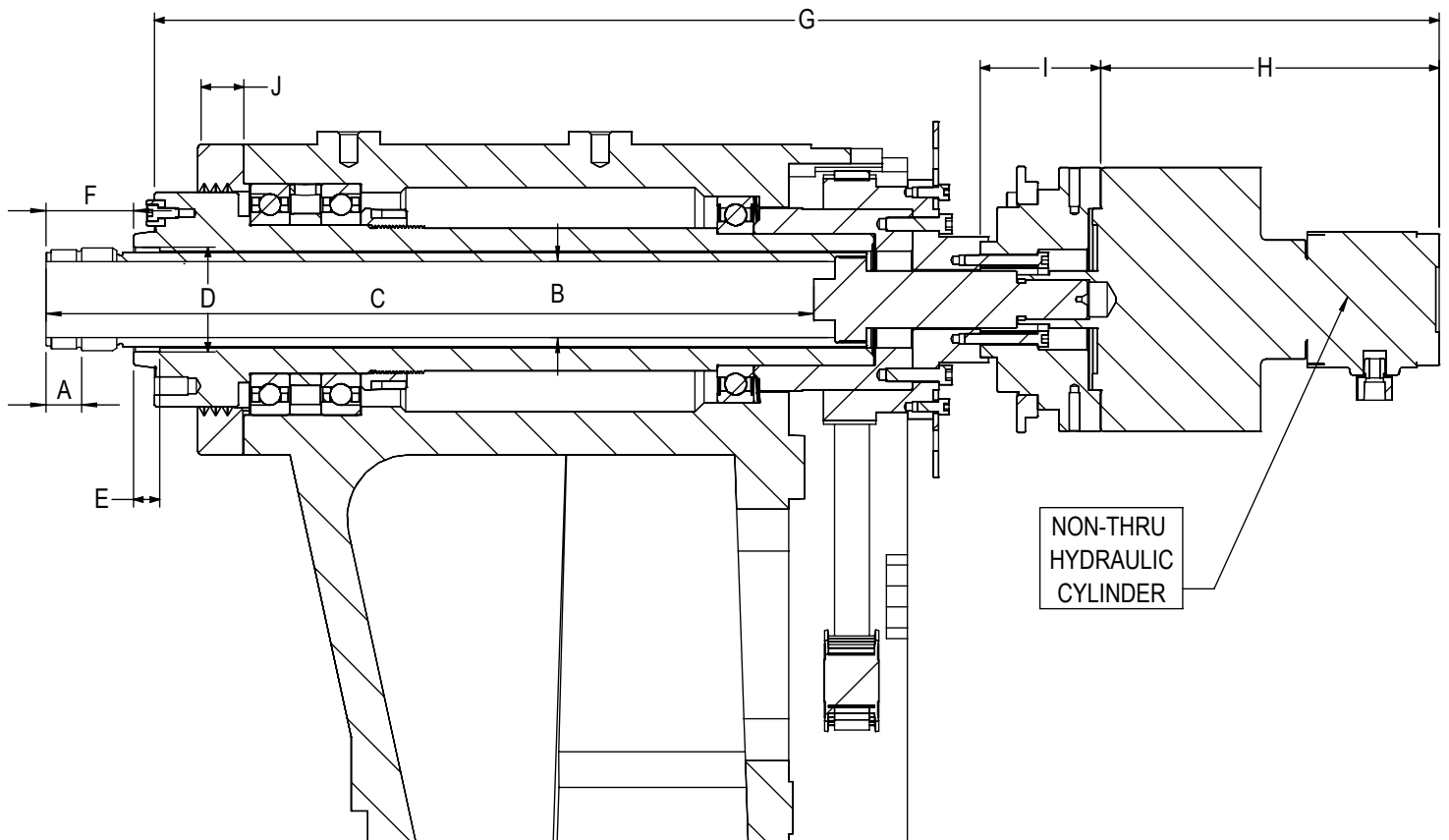
SPINDLE NOSE DETAILS PER AMERICAN STANDARD BULLETIN ASA B5.9 (ANSI)



*DUE TO VENDOR VARIATIONS AND TOLERANCE BUILD-UP, HAAS STRONGLY RECCOMENDS MEASURING DIRECTLY ON THE MACHINE

DESCRIPTION	DIM LETTER	DS-30Y	
		SAE (in)	METRIC (mm)
SPINDLE TYPE		A2-5	
THREAD TYPE		M60 X 1.5	
INTERNAL OR EXTERNAL	-	EXTERNAL	
LENGTH OF THREAD	A	.84	21.3
DRAWBAR BORE Ø	B	1.03	26.2
DRAWBAR BORE DEPTH Ø	C	5.00	127
SPINDLE COUNTERBORE INTERNAL Ø	D	2.50	63.5
SPINDLE COUNTERBORE DEPTH	E	0.62	15.7
DRAWBAR EXTENDED	F	2.6	66
DRAWBAR RETRACTED	-	1.62	41
SPINDLE FACE TO BACK OF UNION	G	30.71	780
HYDRAULIC UNION	H	8.07	573
HYDRAULIC UNION ADAPTER	I	2.48	63
EJECTOR POCKET DEPTH	J	4.52	115
EJECTOR POCKET DIAMETER	K	1.81	46

SPINDLE NOSE DETAILS PER AMERICAN STANDARD BULLETIN ASA B5.9 (ANSI)



COMPATIBLE WITH ALL REBOOT DS-30Y BUILT AFTER JANUARY 2023 WITH NON-THRU SUB-SPINDLES
THIS SPINDLE UPGRADE ONLY REQUIRES CHANGING 3 PARTS - FIELD INSTALL KIT IS 93-1001337

DESCRIPTION	DIM LETTER	DS-30Y	
		SAE (in)	METRIC (mm)
SPINDLE TYPE	-	A2-5	
THREAD TYPE	-	M60 X 1.5	
INTERNAL OR EXTERNAL	-	EXTERNAL	
LENGTH OF THREAD	A	0.84	21.3
DRAWTUBE BORE Ø	B	1.81	45.9
DRAWTUBE BORE DEPTH Ø	C	18.32	465
SPINDLE COUNTERBORE INTERNAL Ø	D	2.50	63.5
SPINDLE COUNTERBORE DEPTH	E	0.62	15.7
DRAWBAR EXTENDED	F	2.6	66
DRAWBAR RETRACTED	-	1.62	41
SPINDLE FACE TO BACK OF UNION	G	30.71	780
HYDRAULIC UNION	H	8.07	573
HYDRAULIC UNION ADAPTOR	I	2.48	63
SPINDLE CAP	J	1.1	28
SPINDLE CAP DIAMETER	-	7.4	188

*DUE TO VENDOR VARIATIONS AND TOLERANCE BUILD-UP, HAAS STRONGLY RECCOMENDS MEASURING DIRECTLY ON THE MACHINE