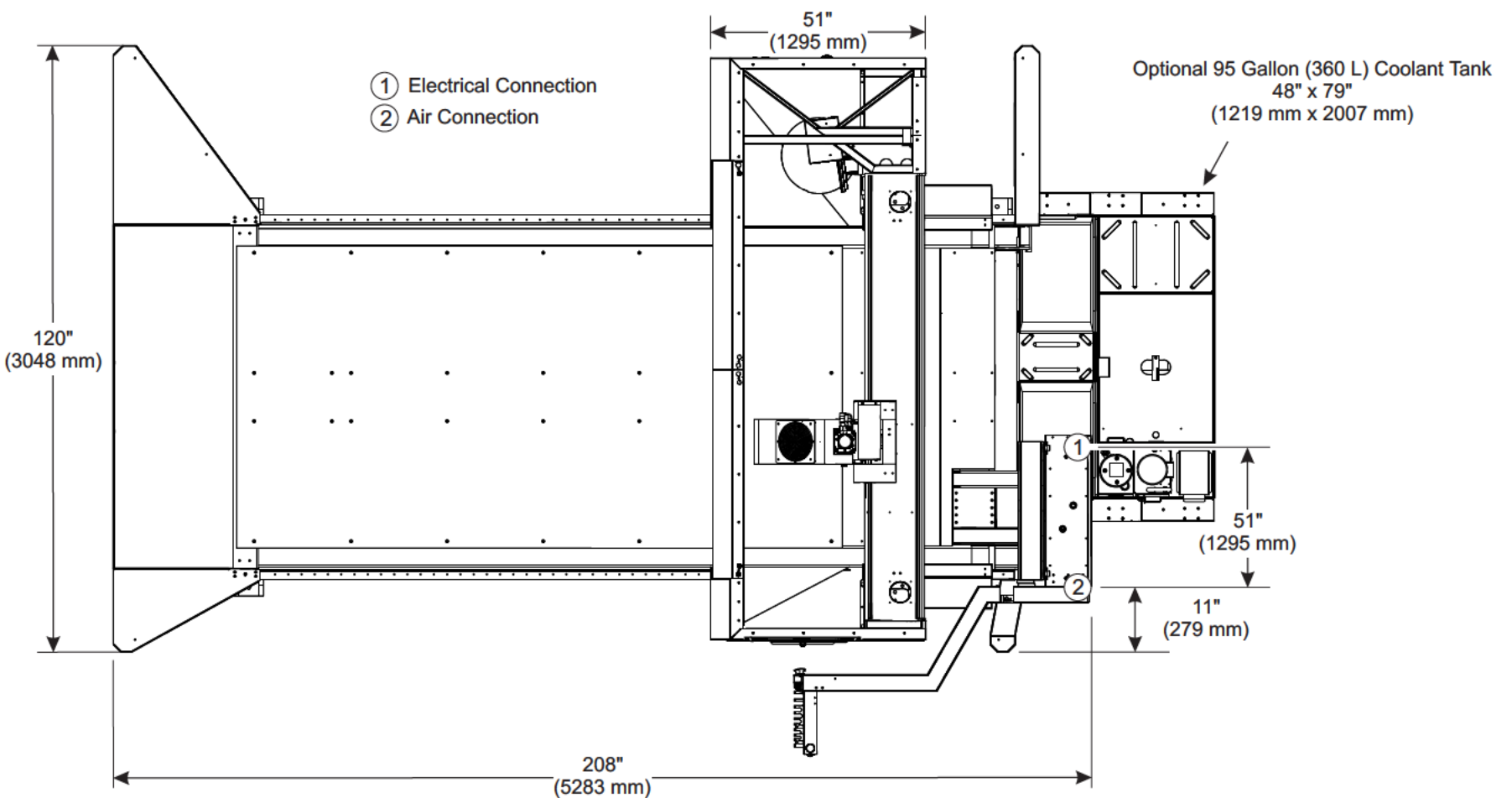
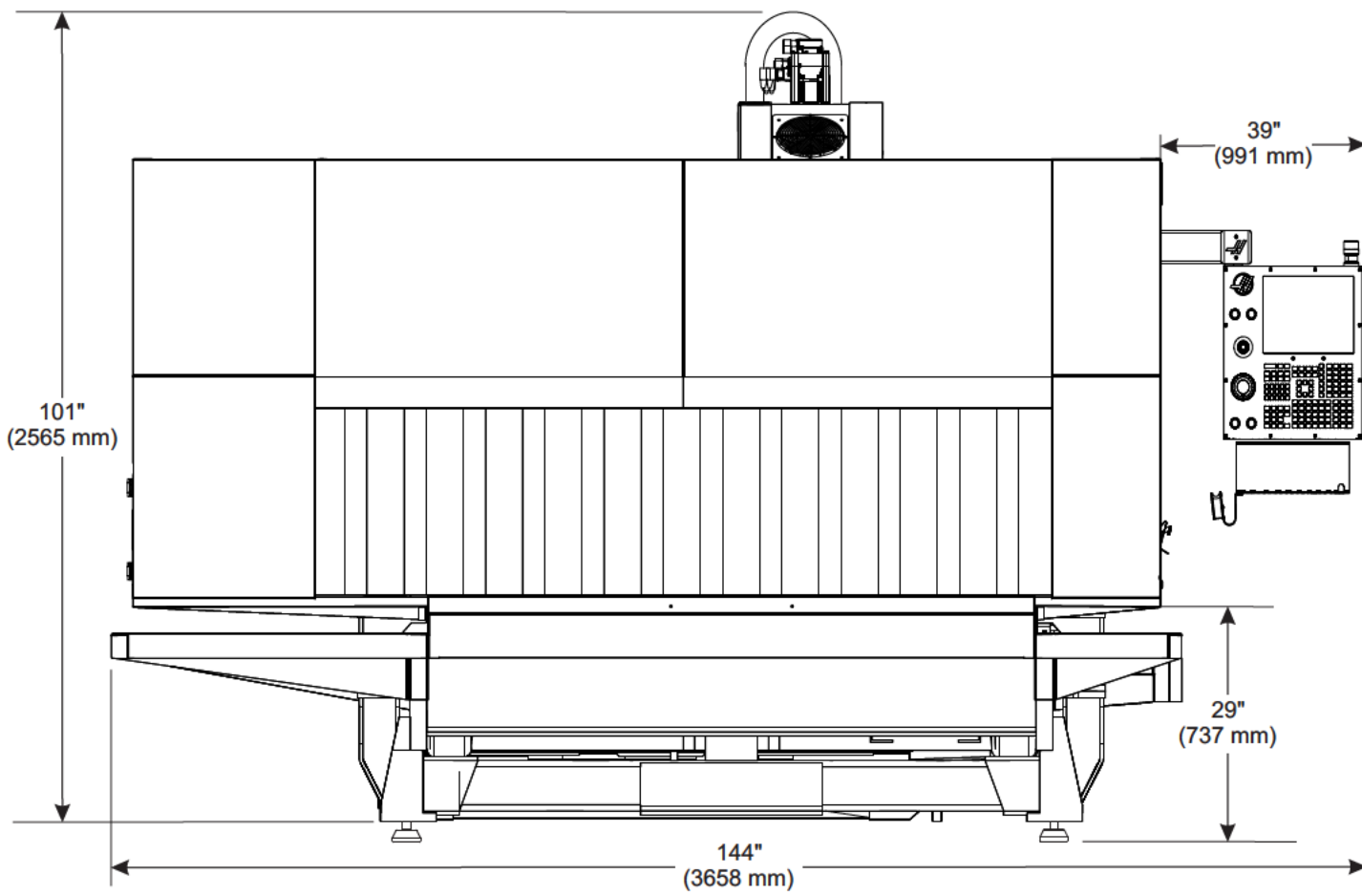
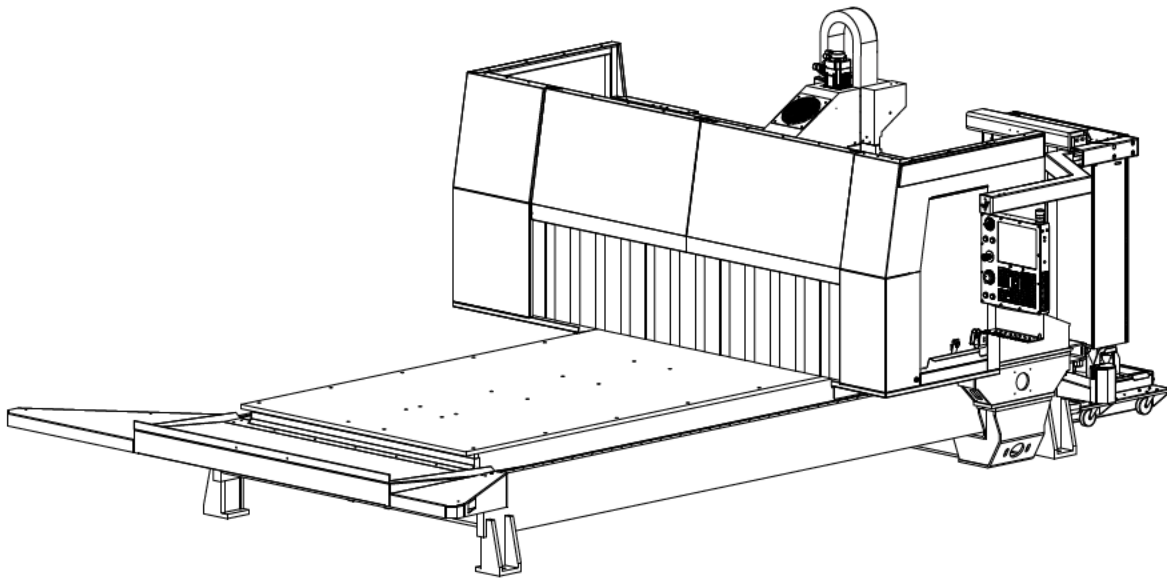
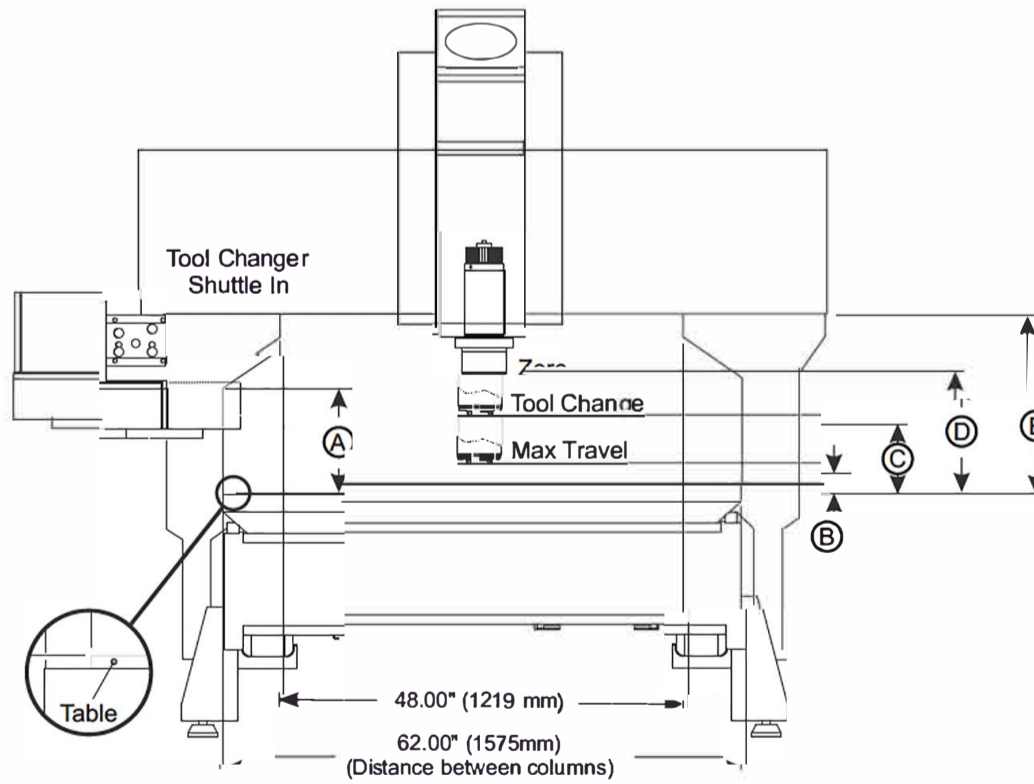
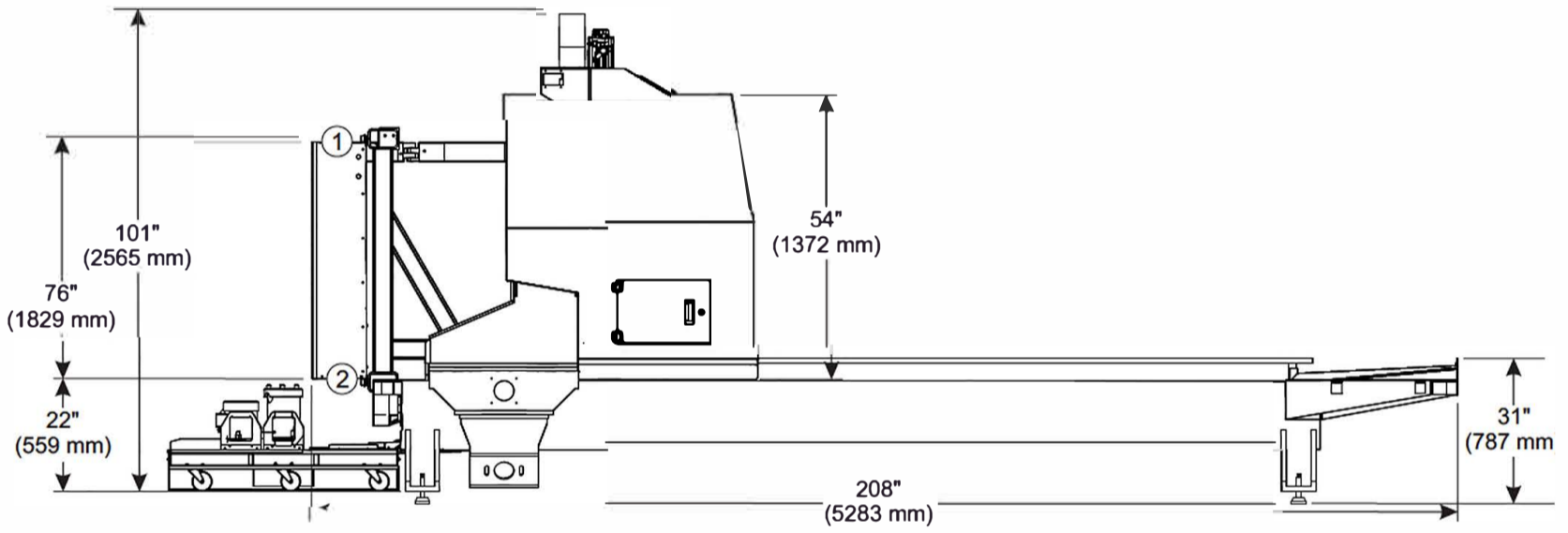
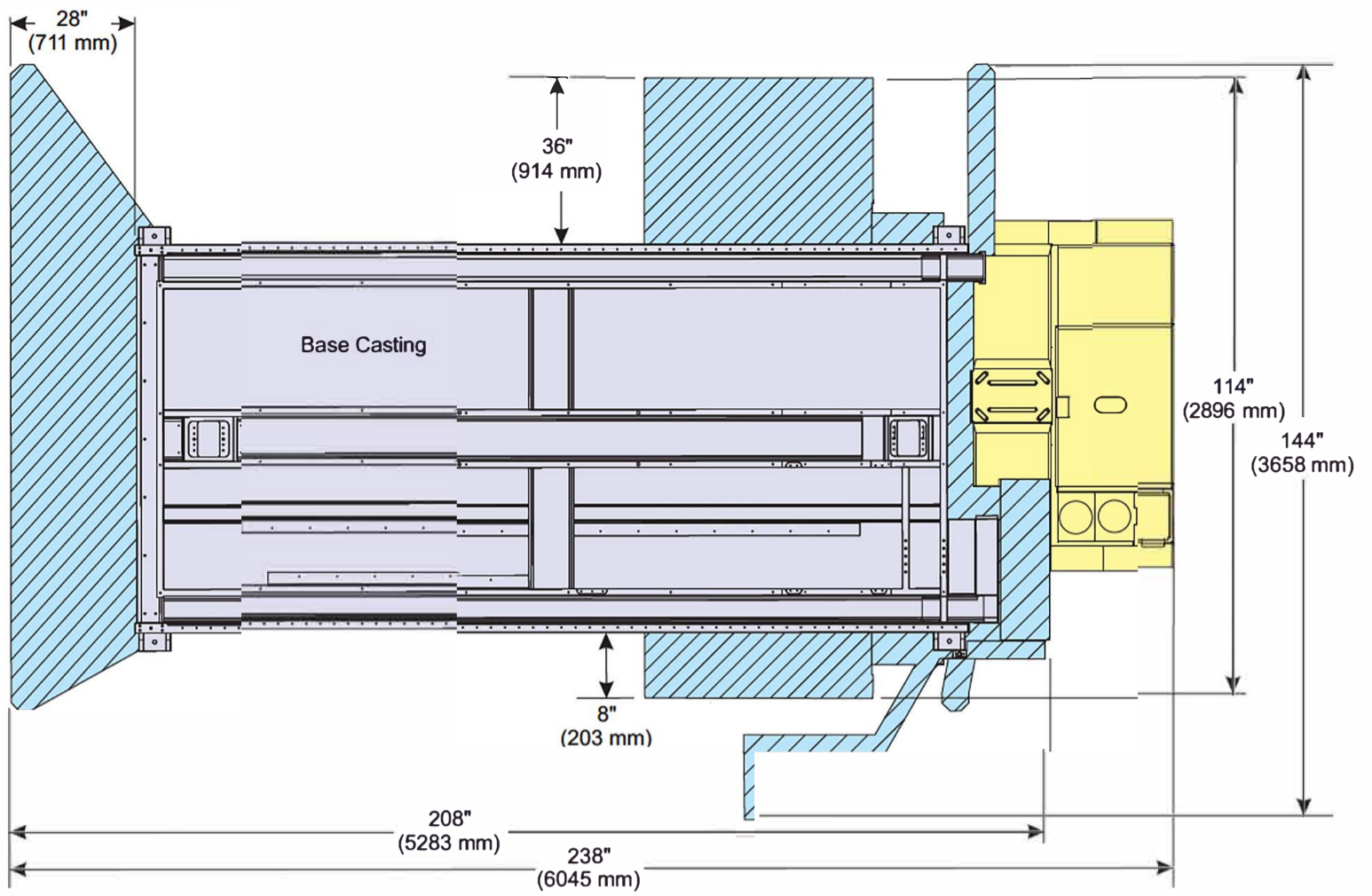


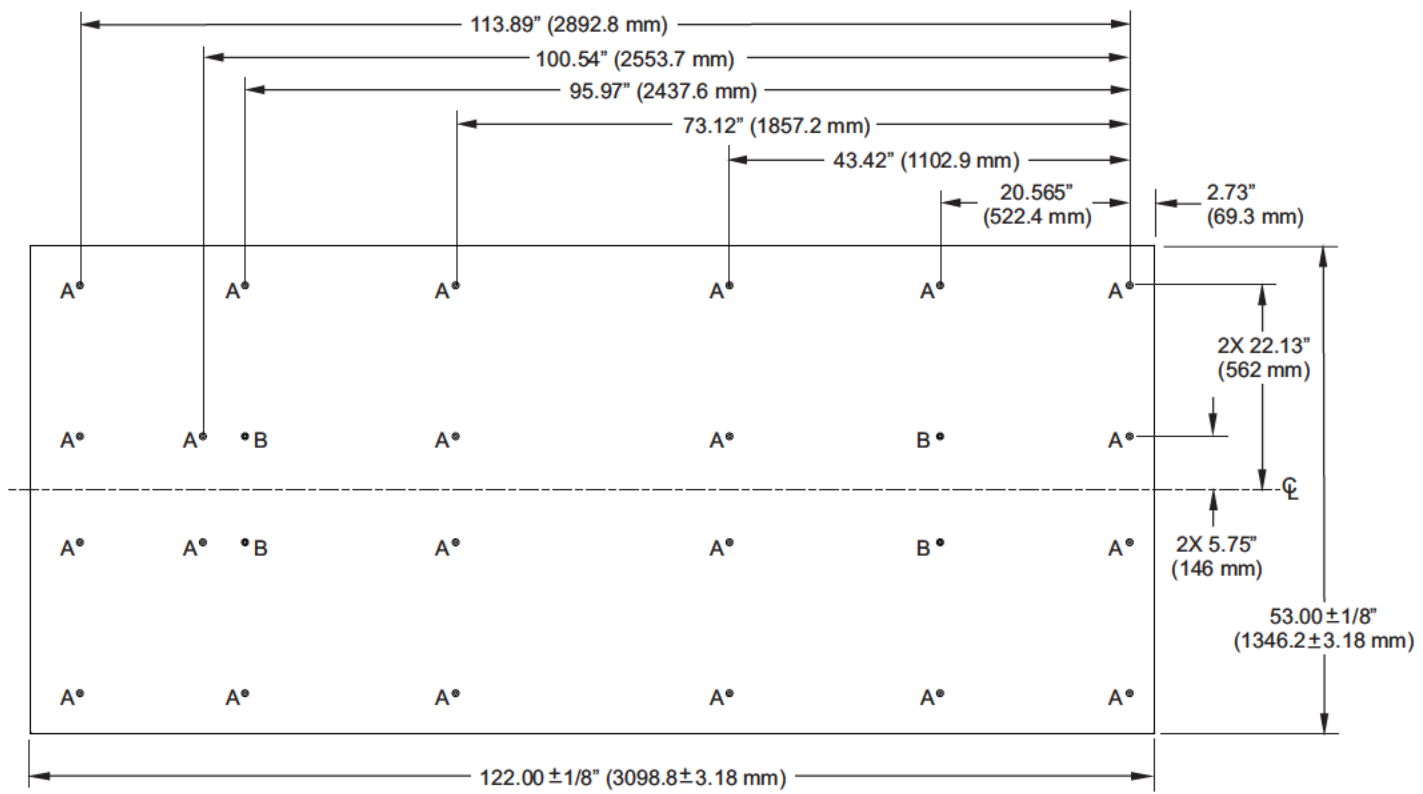
GR-510 Anchor Pattern





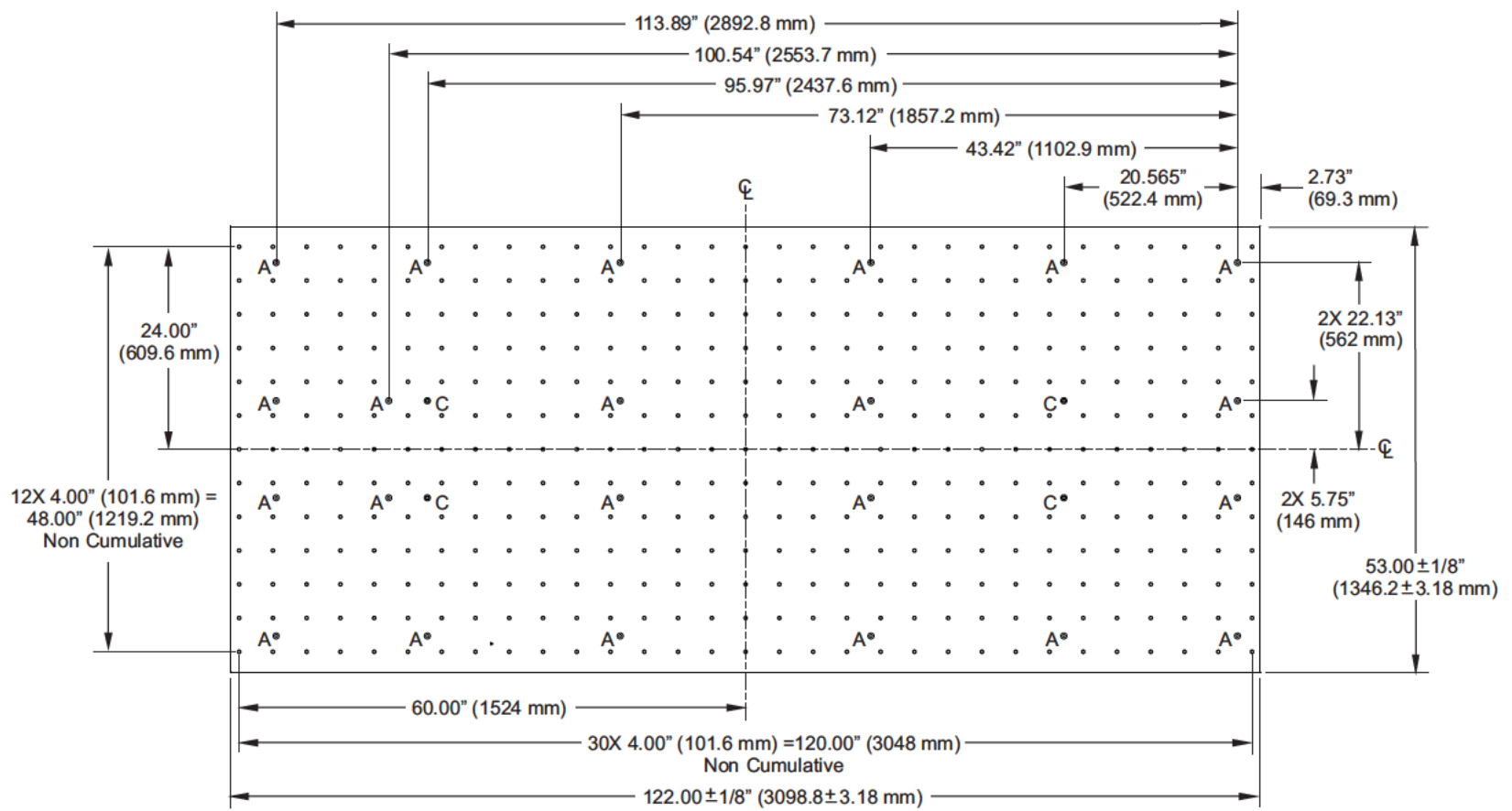
GR-510 Work Space

|   | Standard           | 6" Extended Z-Axis Clearance | 24" Extended Z-Axis Travel |
|---|--------------------|------------------------------|----------------------------|
| Ⓐ | 13.00"<br>(330 mm) | 19.00"<br>(483 mm)           | 27.50"<br>(699 mm)         |
| Ⓑ | 2.50"<br>(64 mm)   | 8.50"<br>(216 mm)            | 4.00"<br>(102 mm)          |
| Ⓒ | 8.25"<br>(210 mm)  | 14.25"<br>(362 mm)           | 23.50"<br>(597 mm)         |
| Ⓓ | 13.50"<br>(343 mm) | 19.50"<br>(495 mm)           | 28.00"<br>(711 mm)         |
| Ⓔ | 20.25"<br>(514 mm) | 26.25"<br>(667 mm)           | 34.75"<br>(883 mm)         |



|   | DESCRIPTION  | QTY. |
|---|--|------|
| A | $\&.391$ " (9.93 mm) Thru x C'Sink $\&.709$ " (18 mm) x $.49$ " (12.4 mm) Deep | 22   |
| B | $1/2$ 13 UNC 2B Thru x C'Sink $\&.709$ " (18 mm) x $.49$ " (12.4 mm) Deep      | 4    |

GR-510 Aluminum Table Dimensions (Standard)



|    | DESCRIPTION  | QTY. |
|----|--|------|
| A  | $\&.391$ " (9.93 mm) Thru x C'Sink $\&.709$ " (18 mm) x $.49$ " (12.4 mm) Deep | 22   |
| C  | $1/2$ 13 UNC 2B Thru x C'Sink $\&.709$ " (18 mm) x $.49$ " (12.4 mm) Deep      | 4    |
| *D | $1/2$ 13 UNC 2B x $.70$ (17.8 mm) Do not drill thru                            | 403  |

\*All unmarked holes are "D" holes.

GR-510 Steel Table Dimensions (Optional)