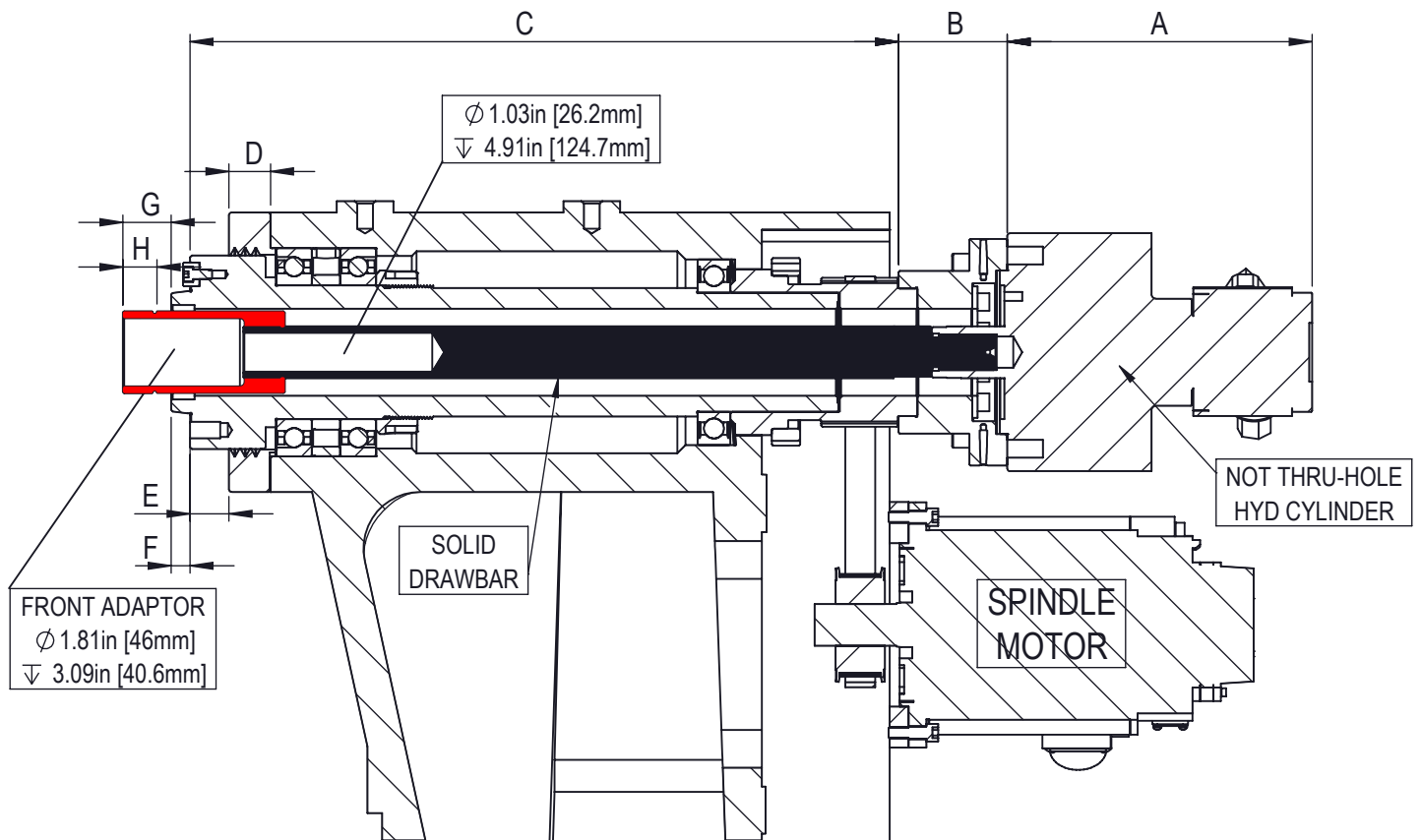


SPINDLE NOSE DETAILS PER AMERICAN STANDARD BULLETIN ASA B5.9 (ANSI)



DUE TO VENDOR VARIATIONS AND TOLERANCE BUILD-UP, HAAS STRONGLY RECOMMENDS MEASURING DRAWTUBE EXTENDED AND RETRACTED DISTANCES ON THE MACHINE

DESCRIPTION	DIM	INCH	METRIC
HYDRAULIC UNION	A	8.07	205
REAR ADAPTOR	B	2.88	73
DISTANCE TO SPINDLE FACE	C	18.75	476.3
SPINDLE CAP	D	1.1	28
SPINDLE CAP DIAMETER	--	7.4	188
SPINDLE FACE TO CAP	E	1.03	26.1
SPINDLE COUNTERBORE DEPTH	F	0.62	15.7
SPINDLE COUNTERBORE DIAMETER	--	2.5	63.5
SPINDLE BORE DIAMETER	--	2.31	58.7
EXTENDED DRAWTUBE TO FACE OF SPINDLE	G	1.76	44.7
RETRACTED DRAWTUBE TO FACE OF SPINDLE	--	0.78	19.8
DRAWTUBE THREAD SPECIFICATION	--	M55 X 2.0	
DRAWTUBE THREAD LENGTH	H	0.84	21.3