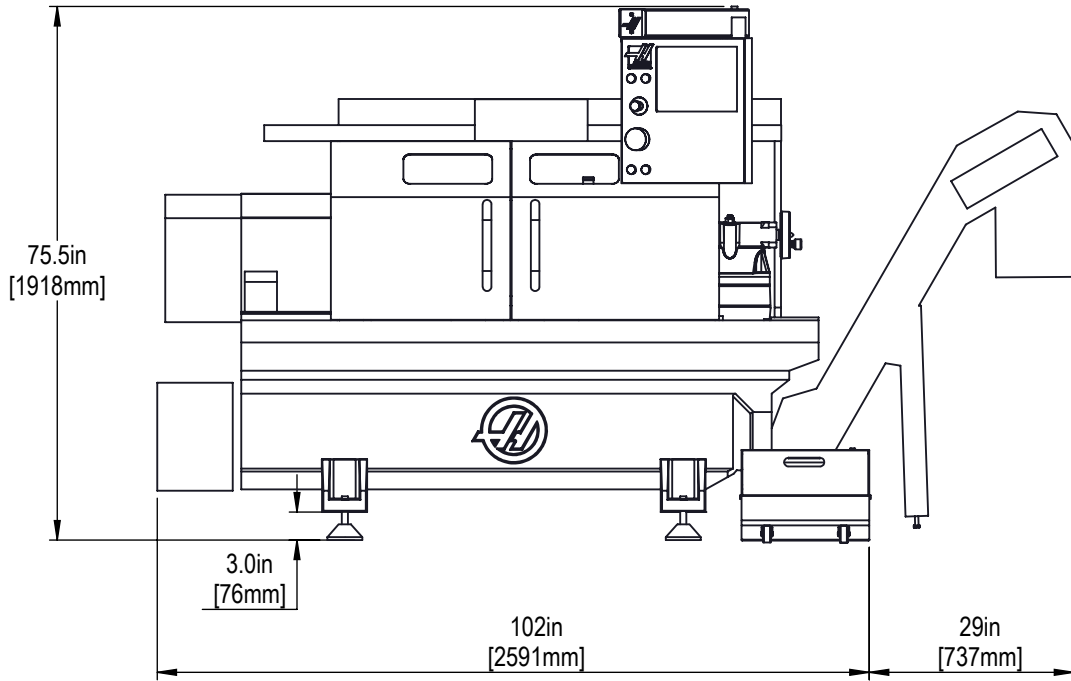


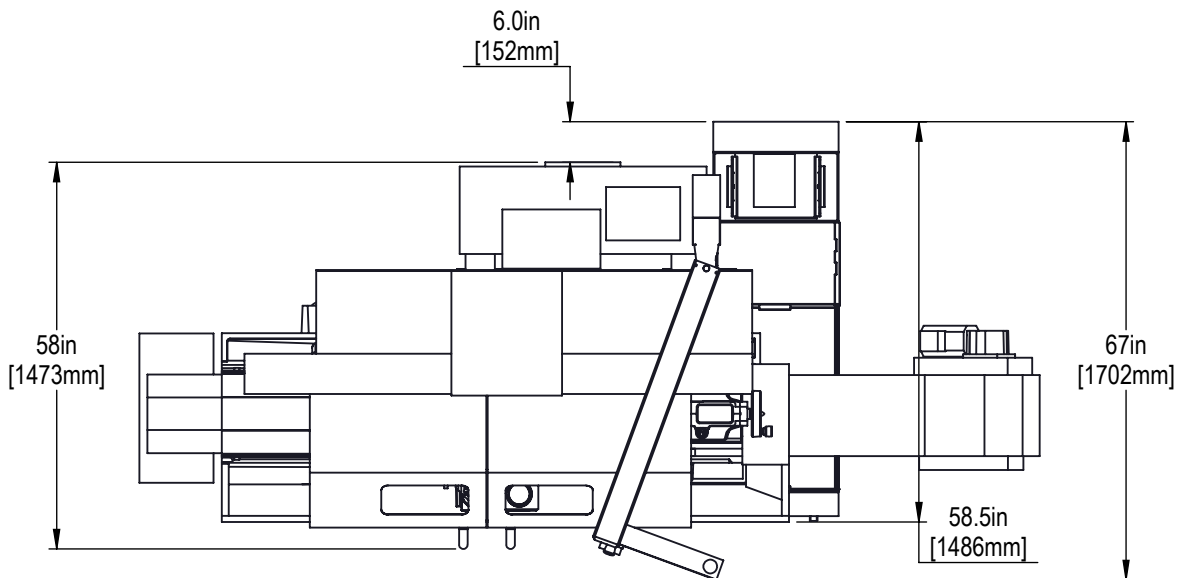


FRONT VIEW - OPERATIONAL DIMENSIONS

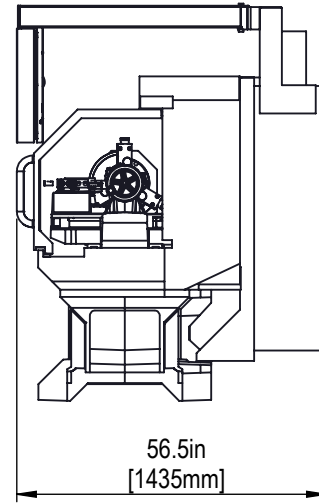
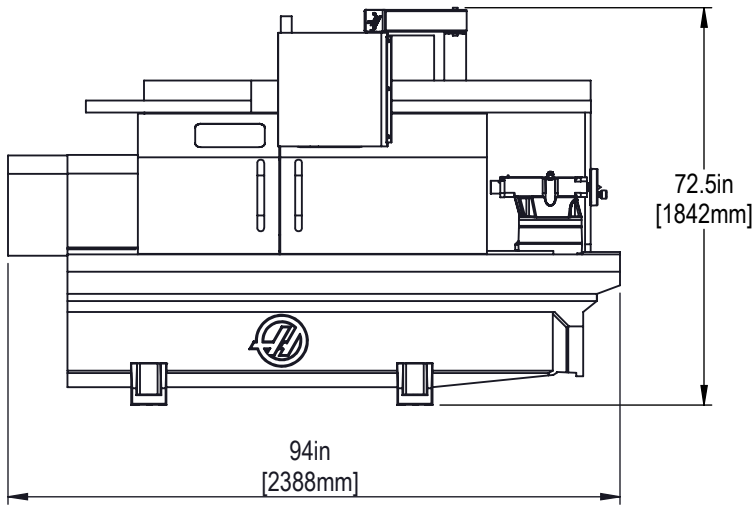


REFER TO THE INSTALLATION INSTRUCTIONS FOR STEP BY STEP GUIDANCE

TOP VIEW - OPERATIONAL DIMENSIONS

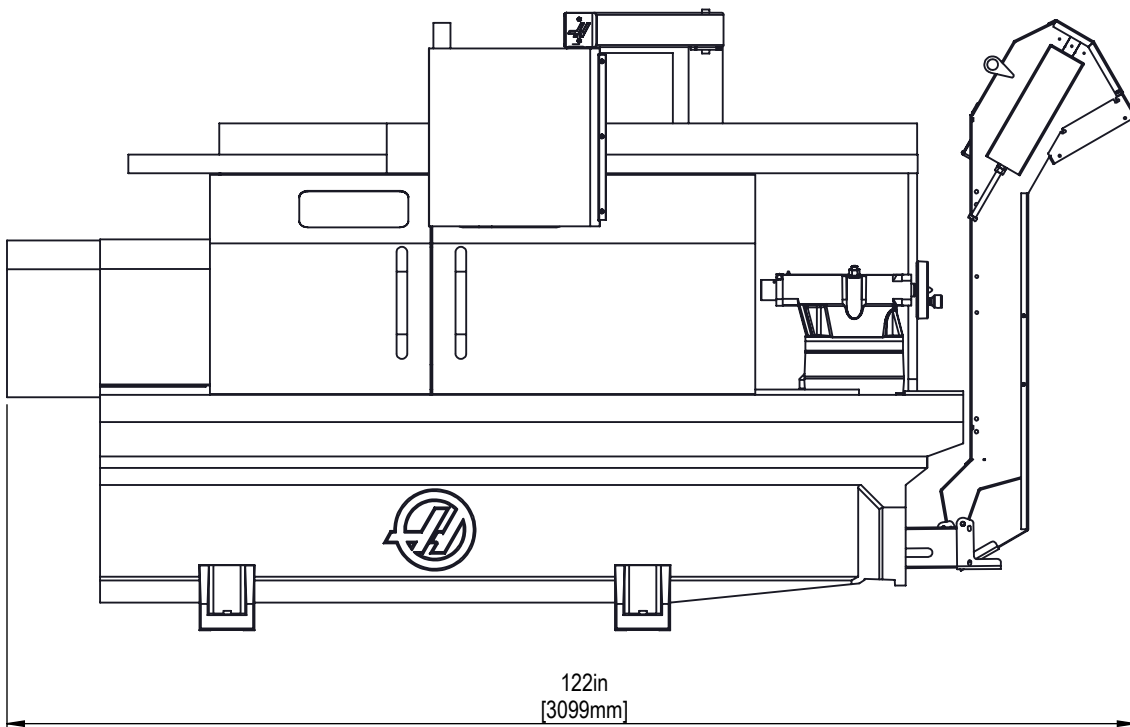


DRAWING NOT TO SCALE



DIMENSIONS SHOWN FROM THE BOTTOM OF THE BASE TO THE HIGHEST POINT

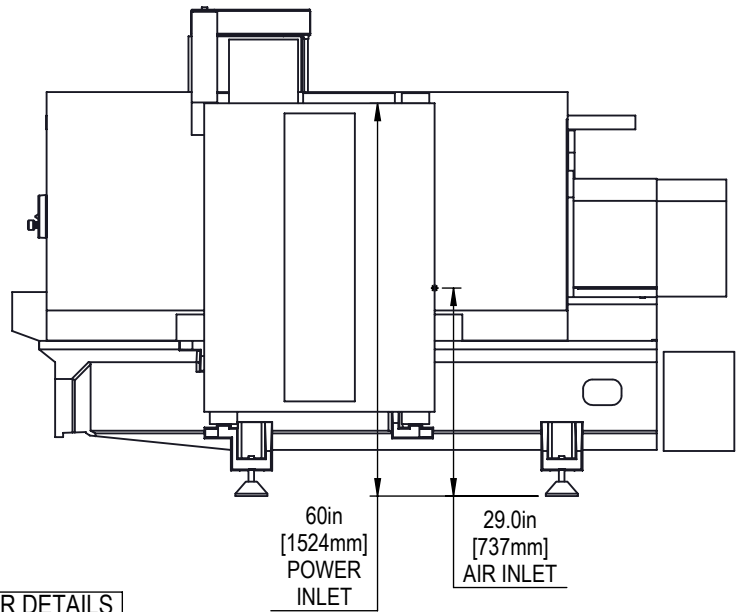
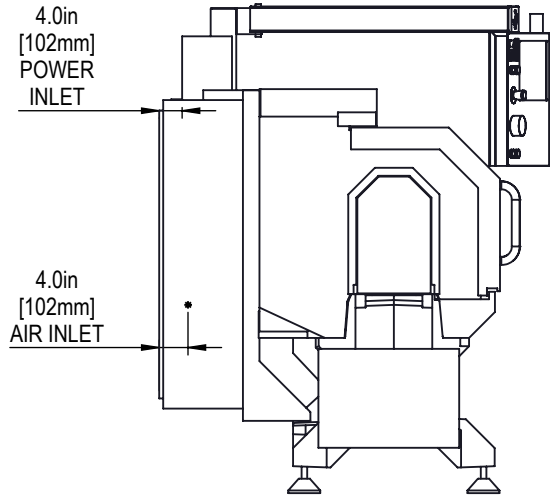
LEVELING SCREWS AND PADS ARE REMOVED TO REDUCE HEIGHT



WHEN THE CONVEYOR OPTION IS SELECTED, IT SHIPS IN THIS VERTICAL POSITION

LEFT SIDE VIEW

BACK VIEW



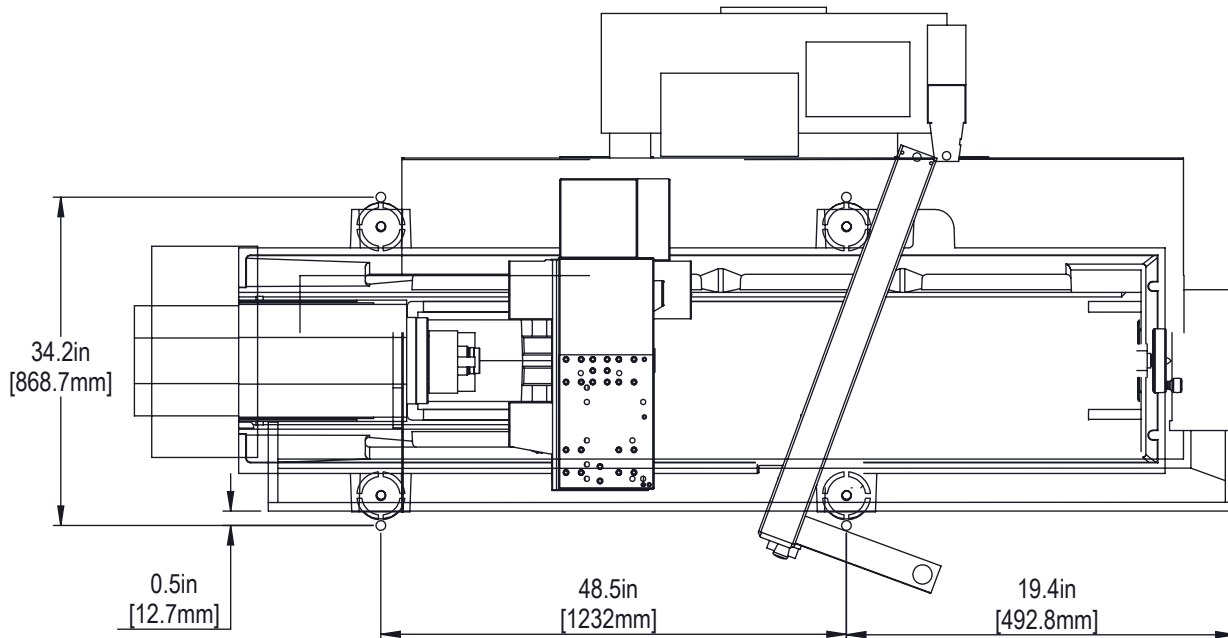
REFER TO MACHINE INSTALLATION INSTRUCTIONS FOR DETAILS

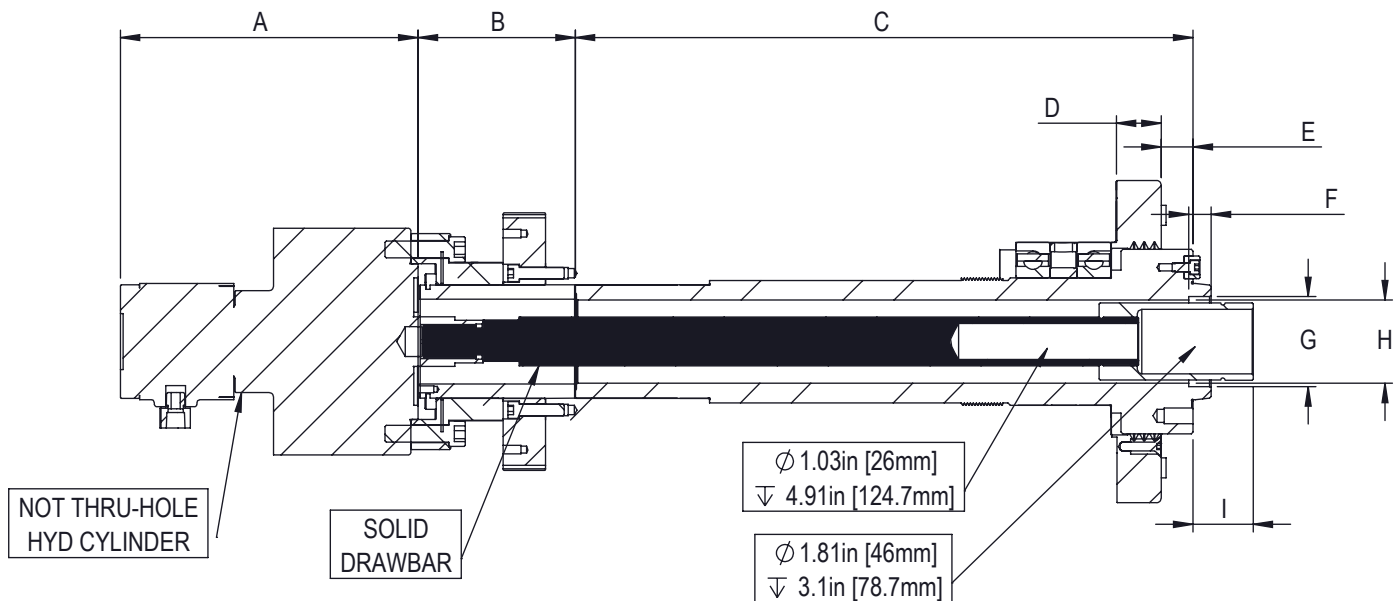
A 36in [914mm] CLEARANCE IS REQUIRED FOR ELECTRICAL CABINET

MACHINE MUST BE PLACED ON A SINGLE CONTINUOUS CONCRETE SLAB. SLAB MUST EXTEND 12in [305mm] BEYOND LEVELING PAD LOCATIONS IN ALL DIRECTIONS

HAAS RECCOMENDS USING THE FACTORY DESIGNED ANCHROING TEMPLATE AND KIT

TOP VIEW





DESCRIPTION	DIM	INCH	METRIC
HYDRAULIC UNION	A	8.07	205
REAR ADAPTOR	B	4.57	116.1
SPINDLE SHAFT	C	17.16	435.8
SPINDLE CAP	D	1.25	31.8
SPINDLE CAP DIAMETER	--	8.95	227.3
SPINDLE FACE TO CAP	E	0.89	22.6
SPINDLE COUNTERBORE	F	0.62	15.7
COUNTERBORE DIAMETER	G	2.5	63.5
SPINDLE BORE DIAMETER	H	2.31	58.7
EXTENDED DRAWTUBE TO FACE OF SPINDLE	I	1.76	44.7
RETRACTED DRAWTUBE TO FACE OF SPINDLE	--	0.78	19.8
DRAWTUBE THREAD	--	M55 X 2.0	
DRAWTUBE THREAD LENGTH	--	0.84	21.3