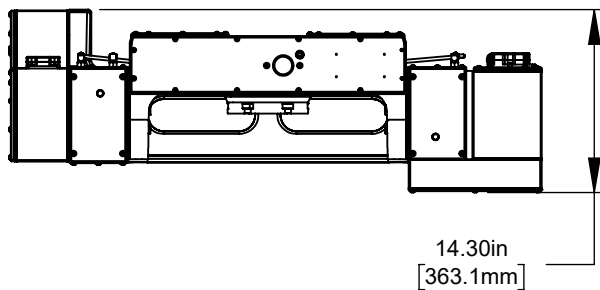
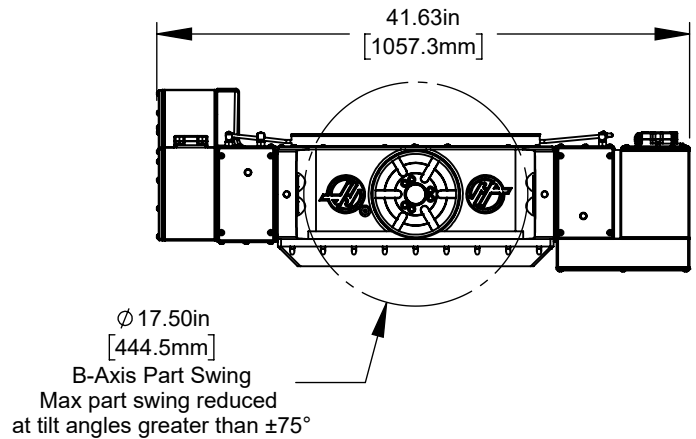


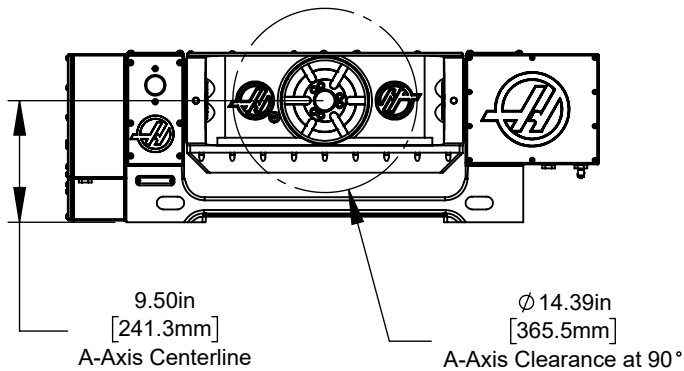
**Top View**  
Platter Rotated 90° to Base



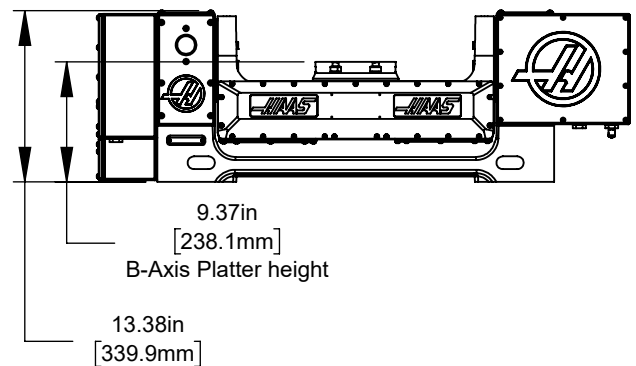
**Top View**



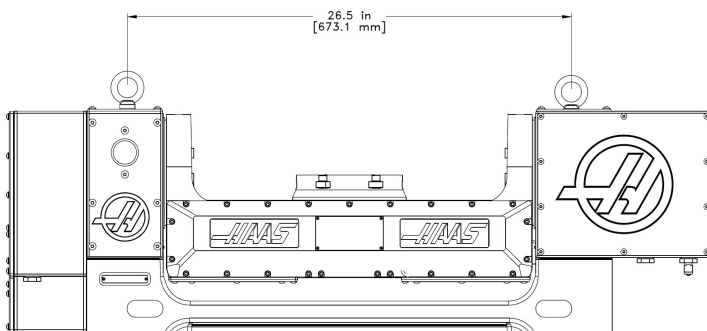
**Front View**  
Platter Rotated 90° to Base



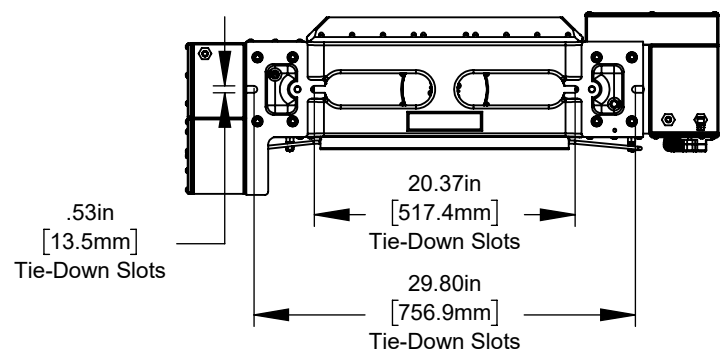
**Front View**



**Eye Bolt Distance**

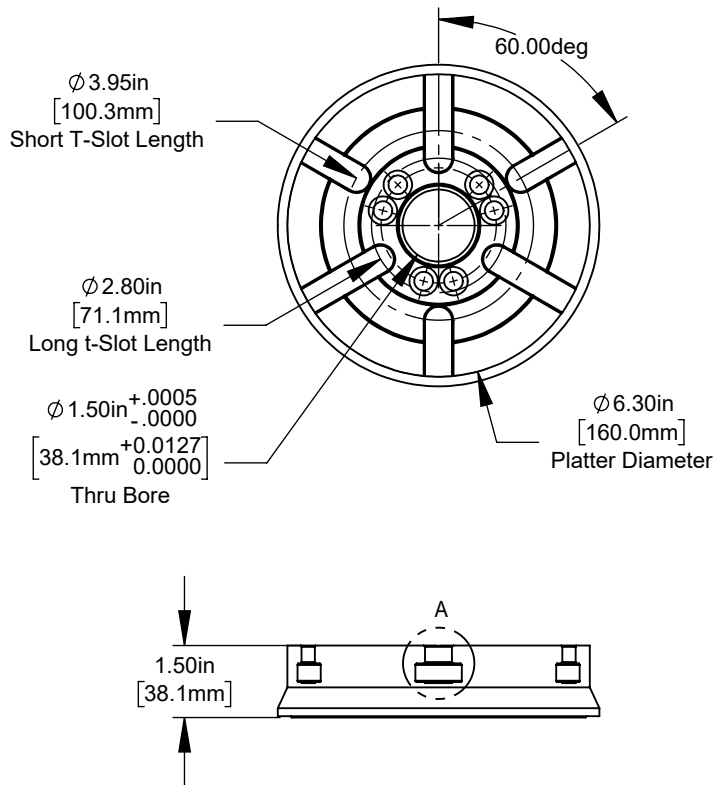
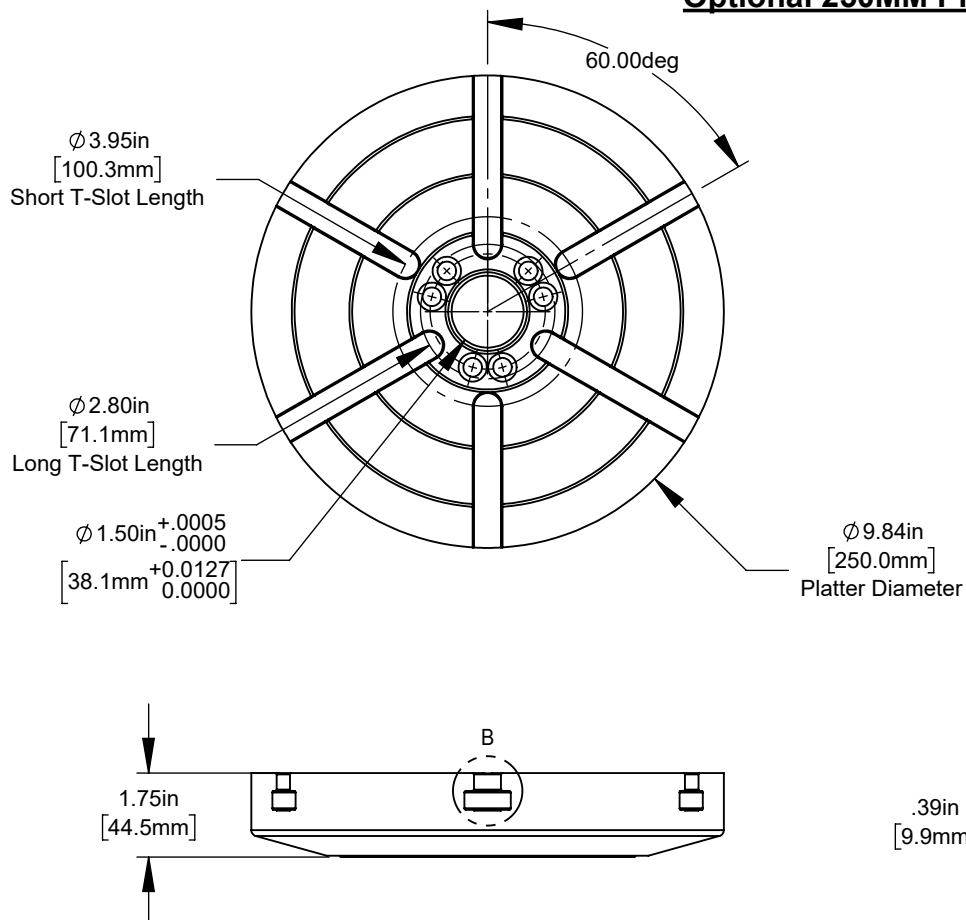


**Bottom View**



All dimensions based on stackup of sheetmetal, subject to variation of 1/2" ( 13 mm)

\*Due to continual product improvements, machine dimensions are subject to change without notice.

DETAIL A  
SCALE 1 : 2**Optional 250MM Platter**DETAIL B  
SCALE 1 : 2