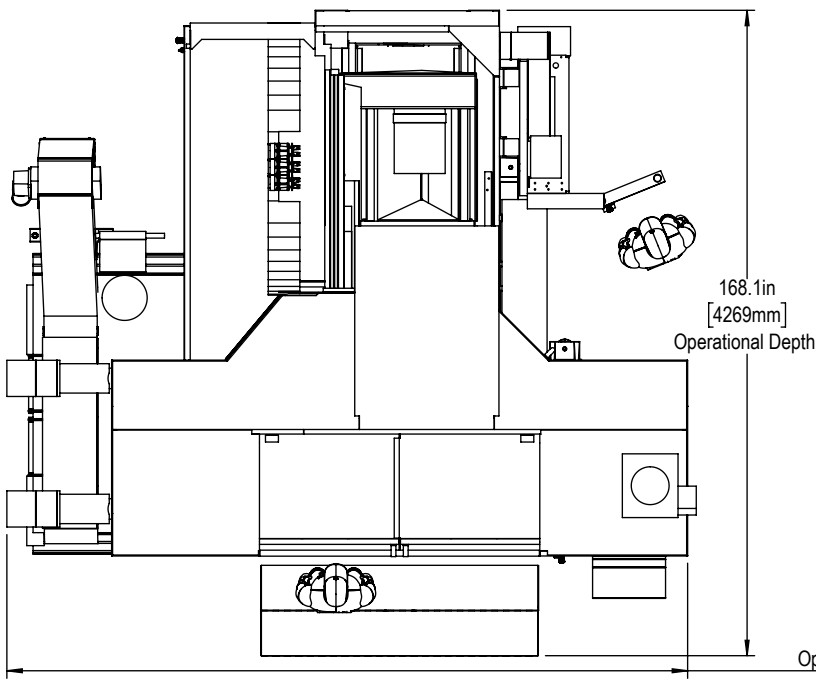
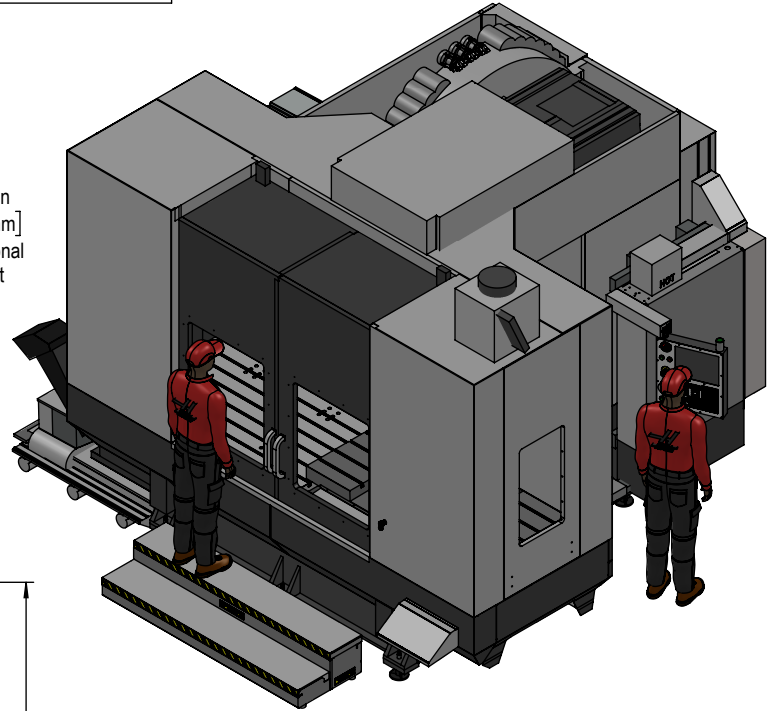
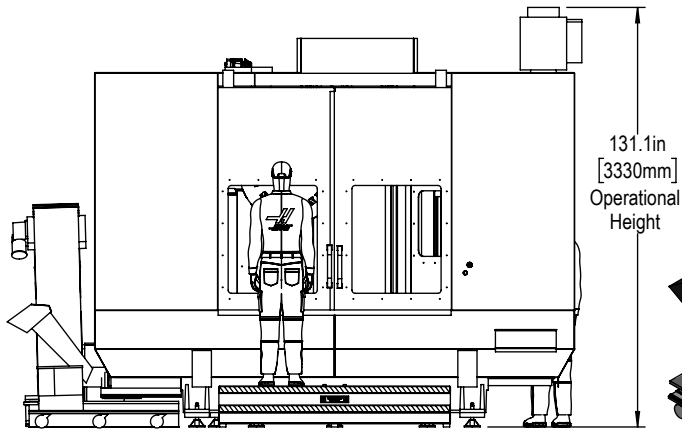
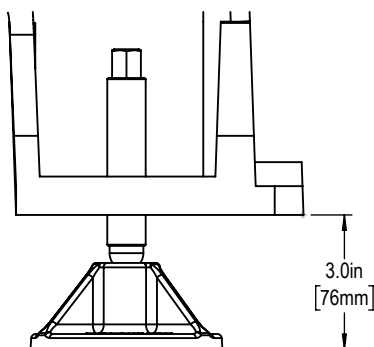




Installed Dimensions

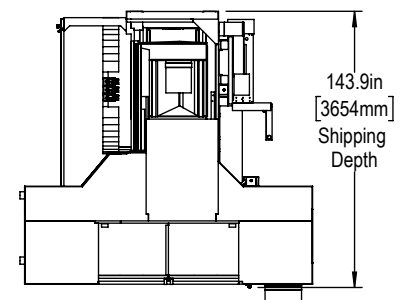
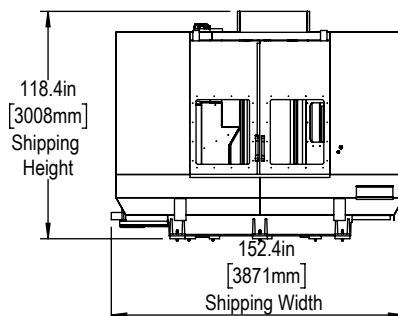


Leveling Pad Height



Shipping Dimensions

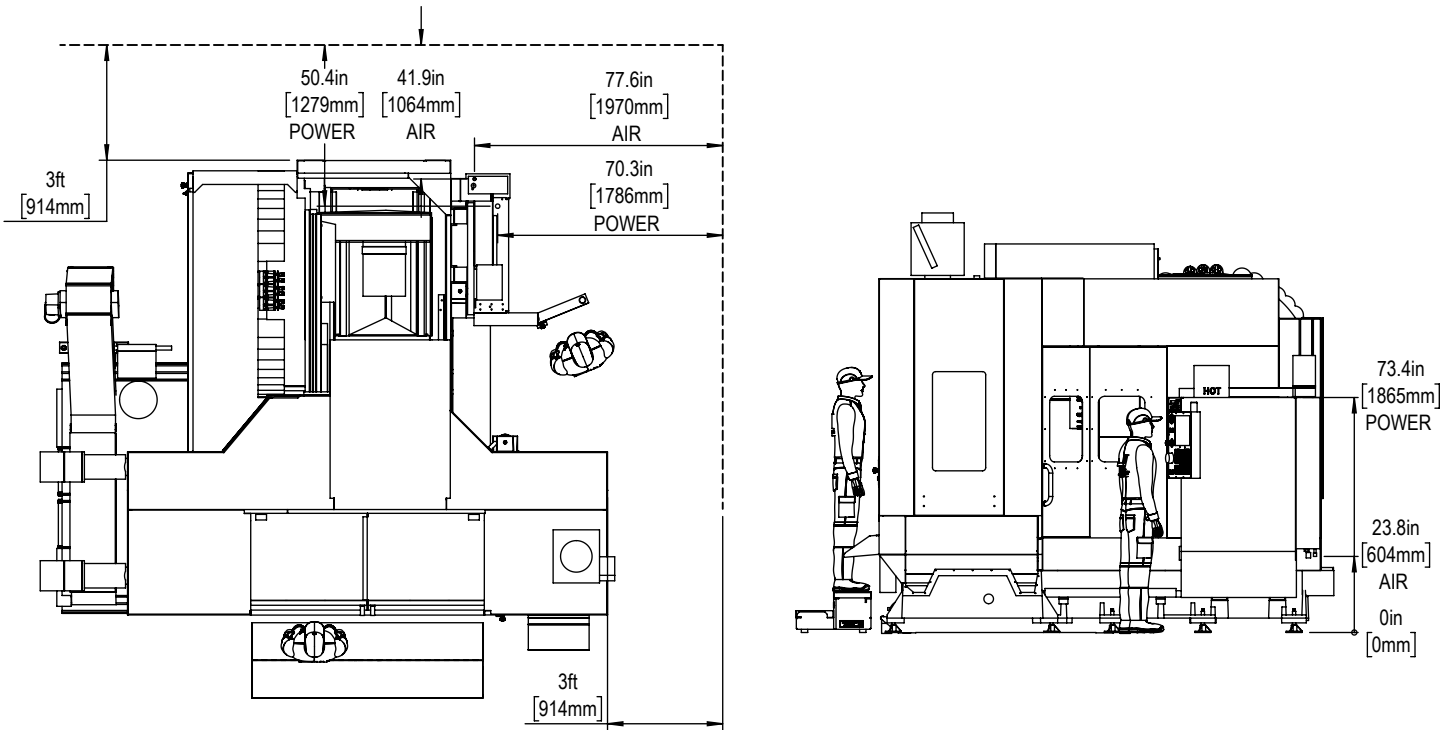
Shipping Height w/SMTC70: 126" (3200mm)



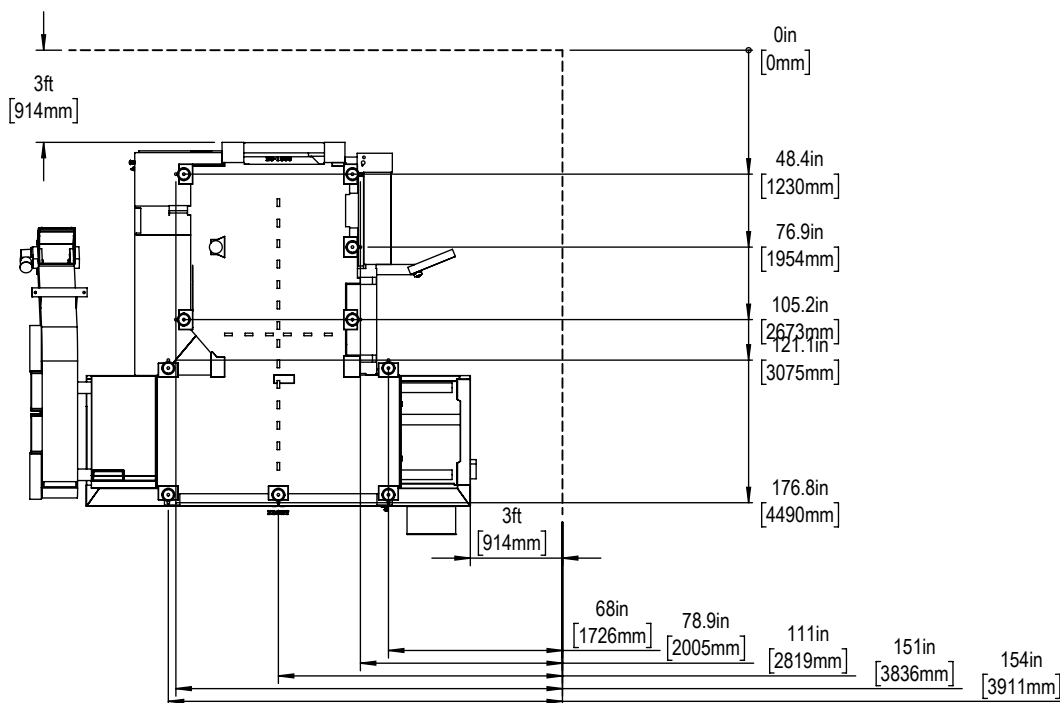
Shipping Depth w/SMTC70: 185" (699mm)

*All Height Dimensions Based on Suggested Leveling Pad Height

Air & Power



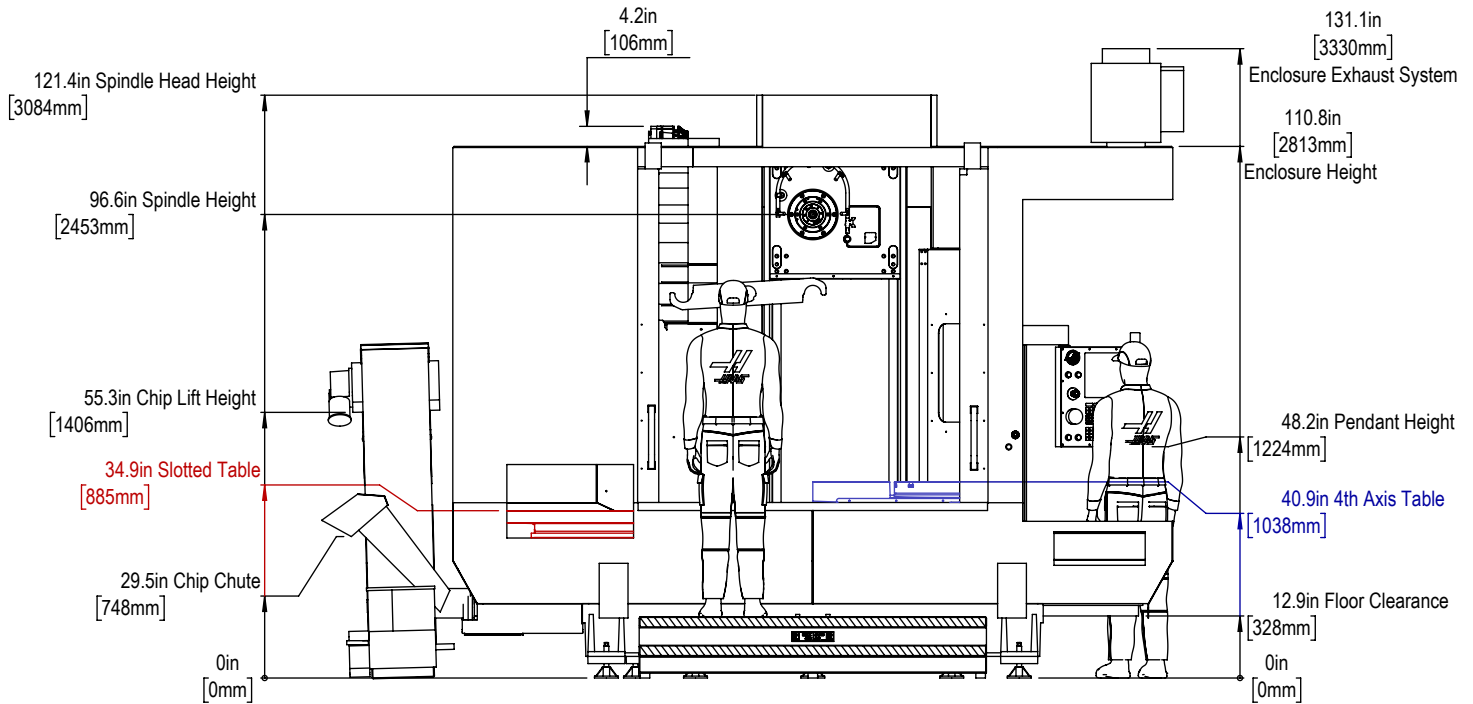
Anchor Pattern



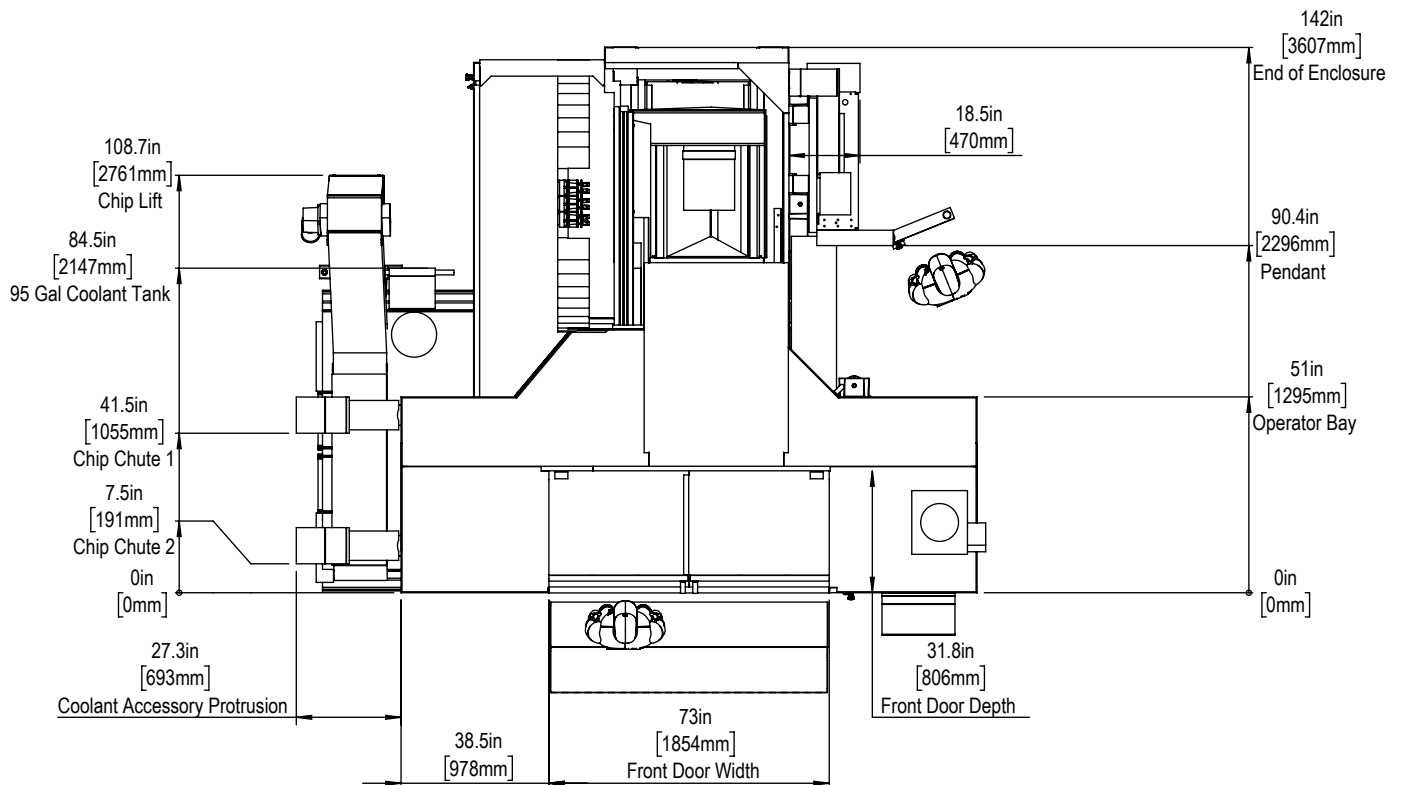
For precise locations, please use template in the machine's Anchoring Kit found at Haascnc.com



Height Breakdown

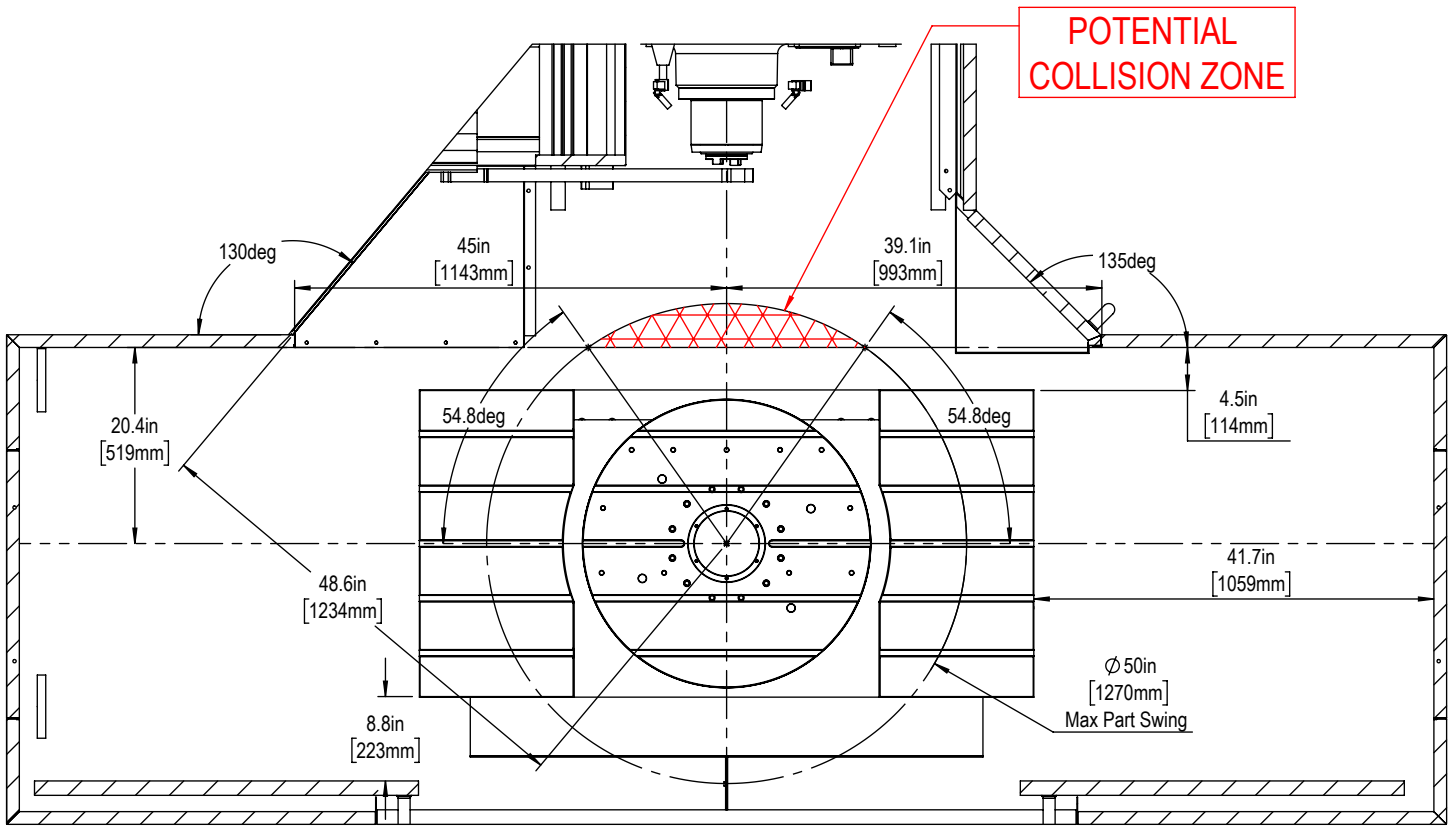


Width Breakdown

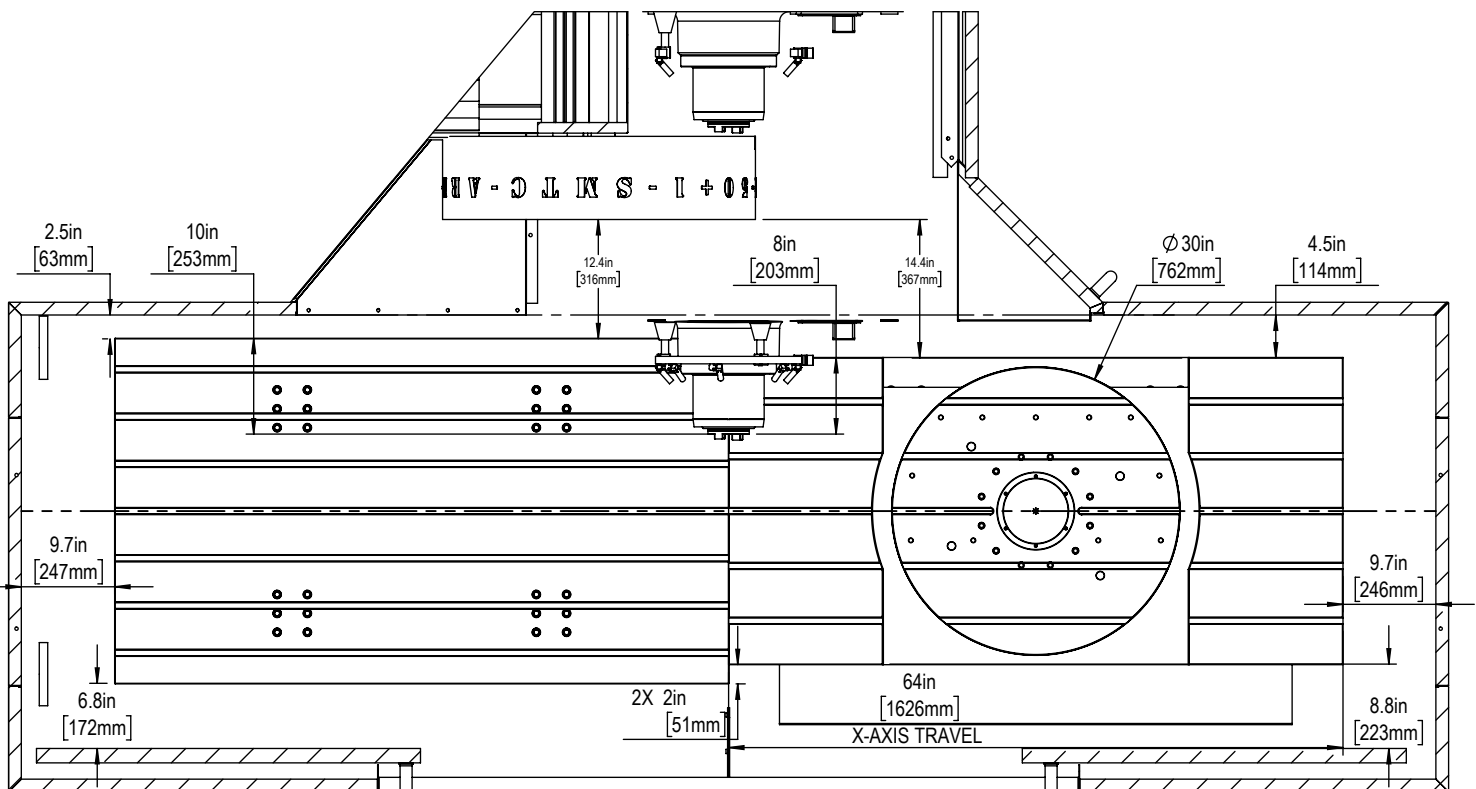


Maintain 3 feet [915mm] clearance to the nearest obstruction around all sides of machine perimeter for maintenance access

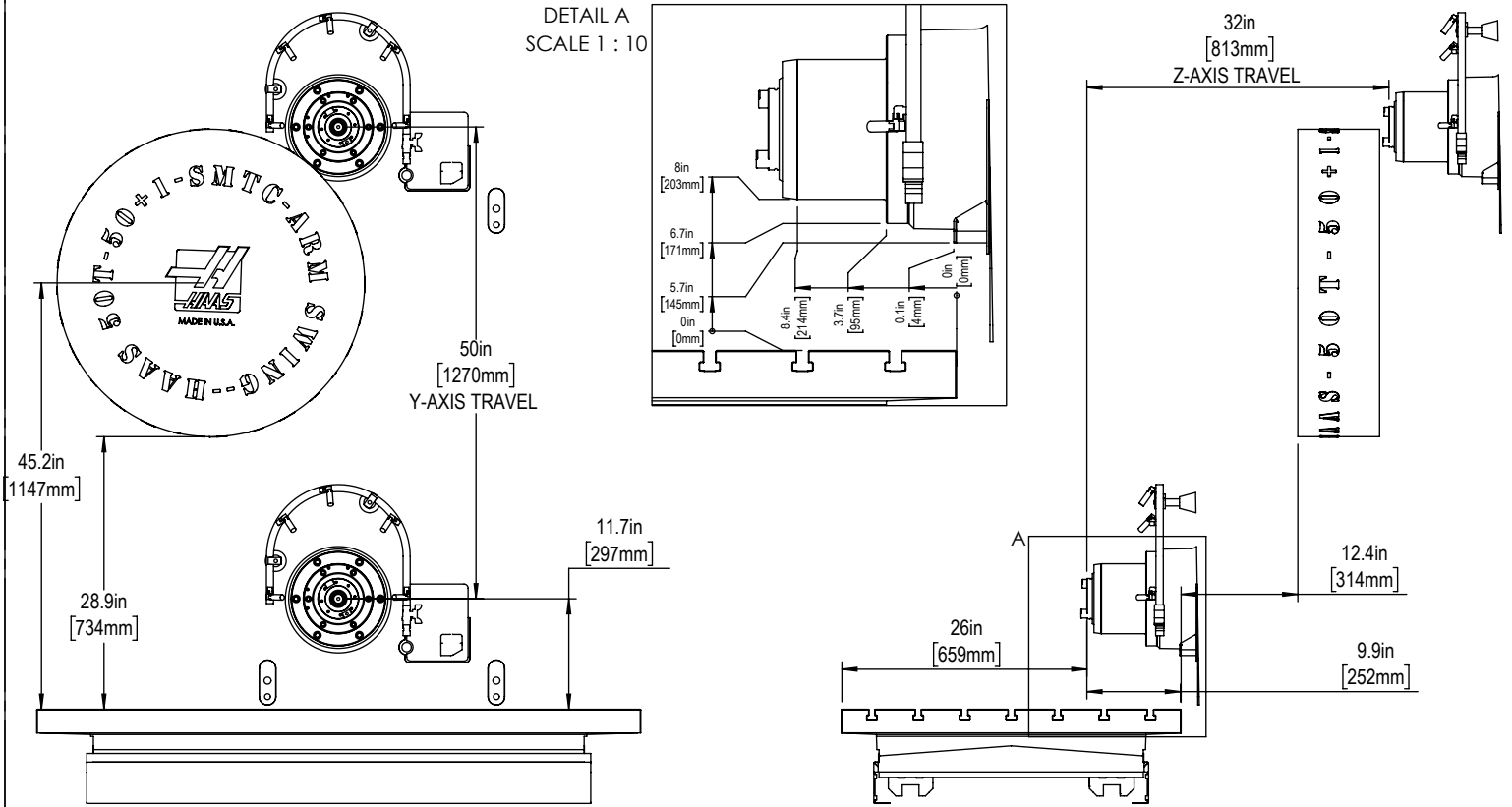
Max Part Swings



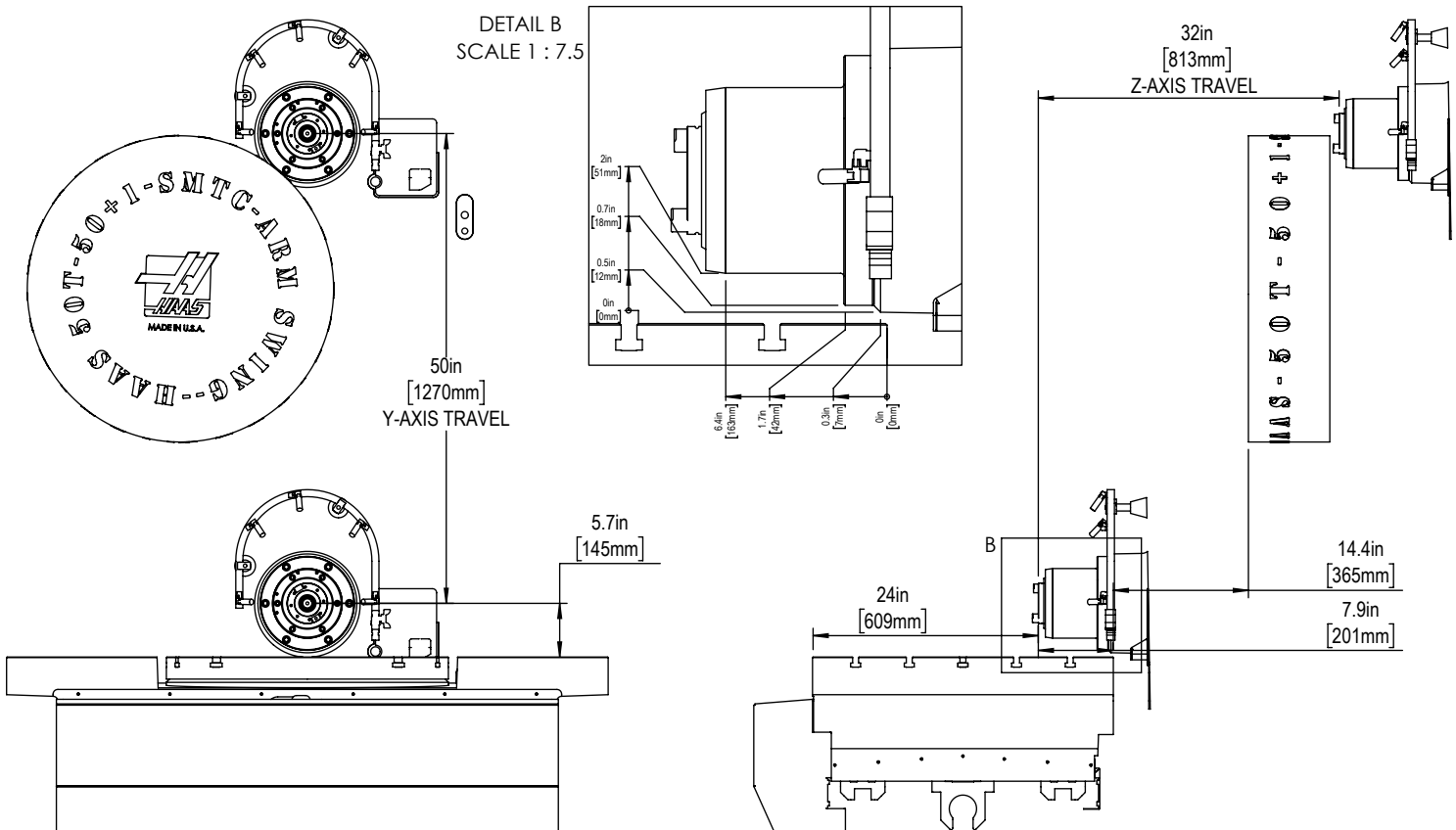
B-Axis Collision Zones



Standard Slotted Table Y-Axis Travel

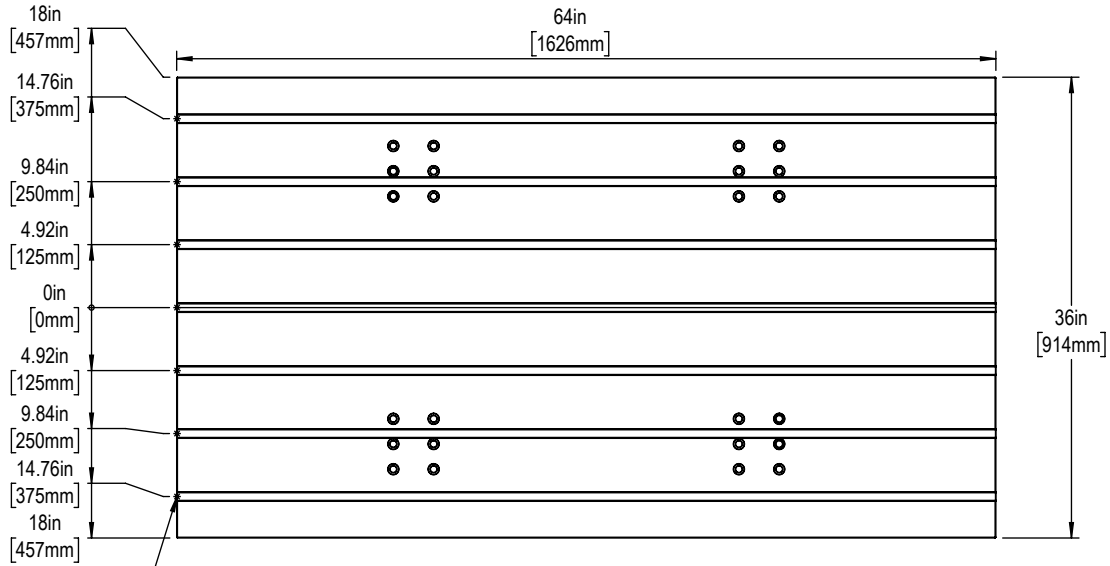


4th Axis Platter Table Y-Axis Travel

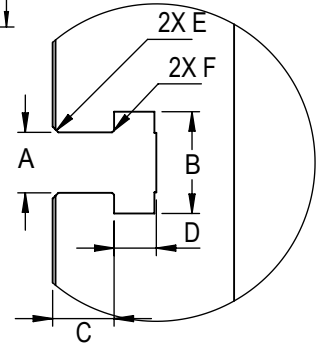




Table



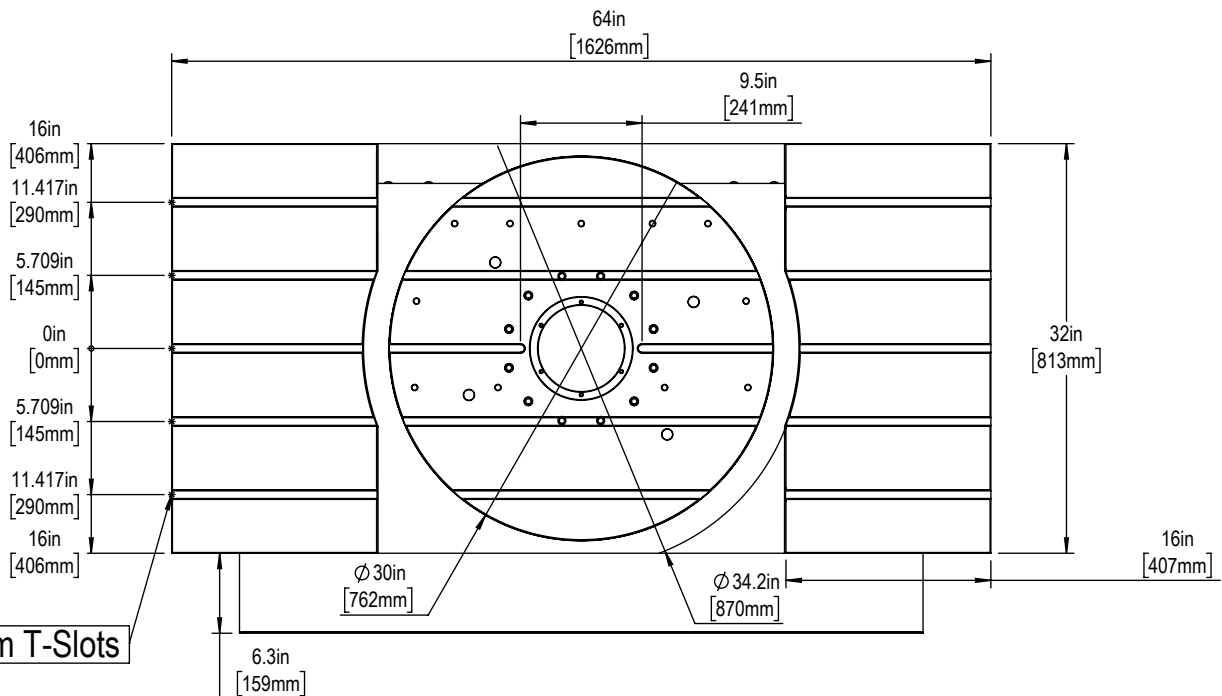
16-mm T-Slots



T-Slot Dimensions in inches

Slot Size	A	B	C	D	E	F
11mm	$0.438 \begin{smallmatrix} +.002 \\ -.000 \end{smallmatrix}$	0.76 ± 0.02	0.310 ± 0.010	0.318 ± 0.010	$0.03 \times 45^\circ$	$0.020 \times 45^\circ$
16mm	0.628 ± 0.002	1.06 ± 0.02	0.640 ± 0.010	0.420 ± 0.010	$0.06 \times 45^\circ$	$0.020 \times 45^\circ$

Tool Changer



16-mm T-Slots