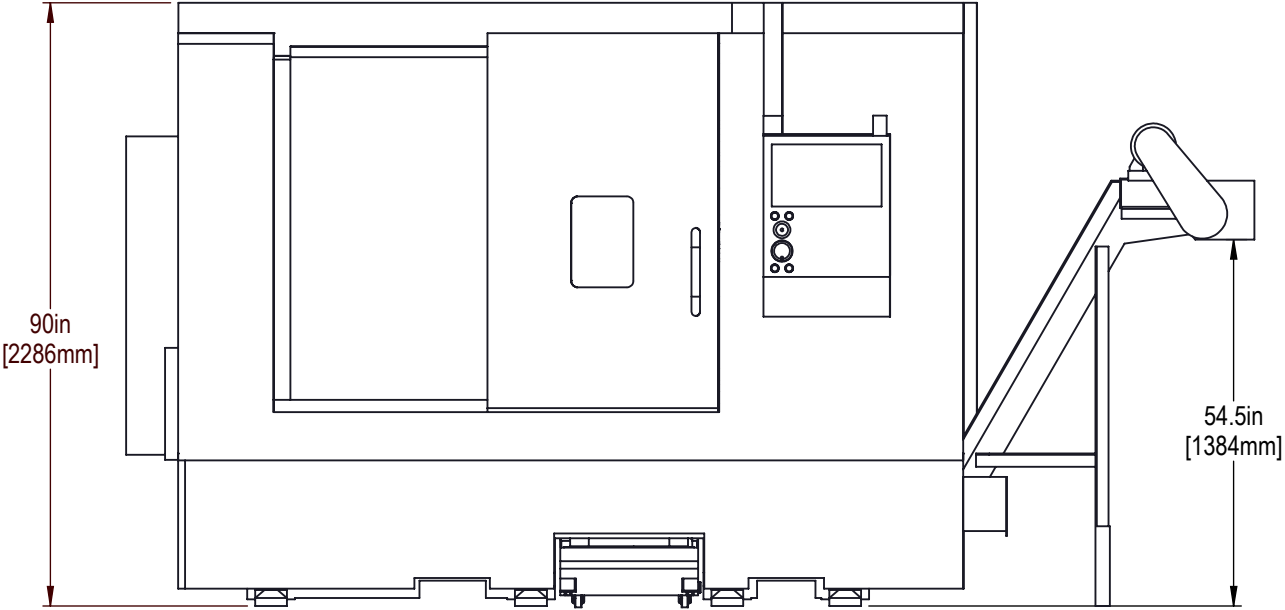


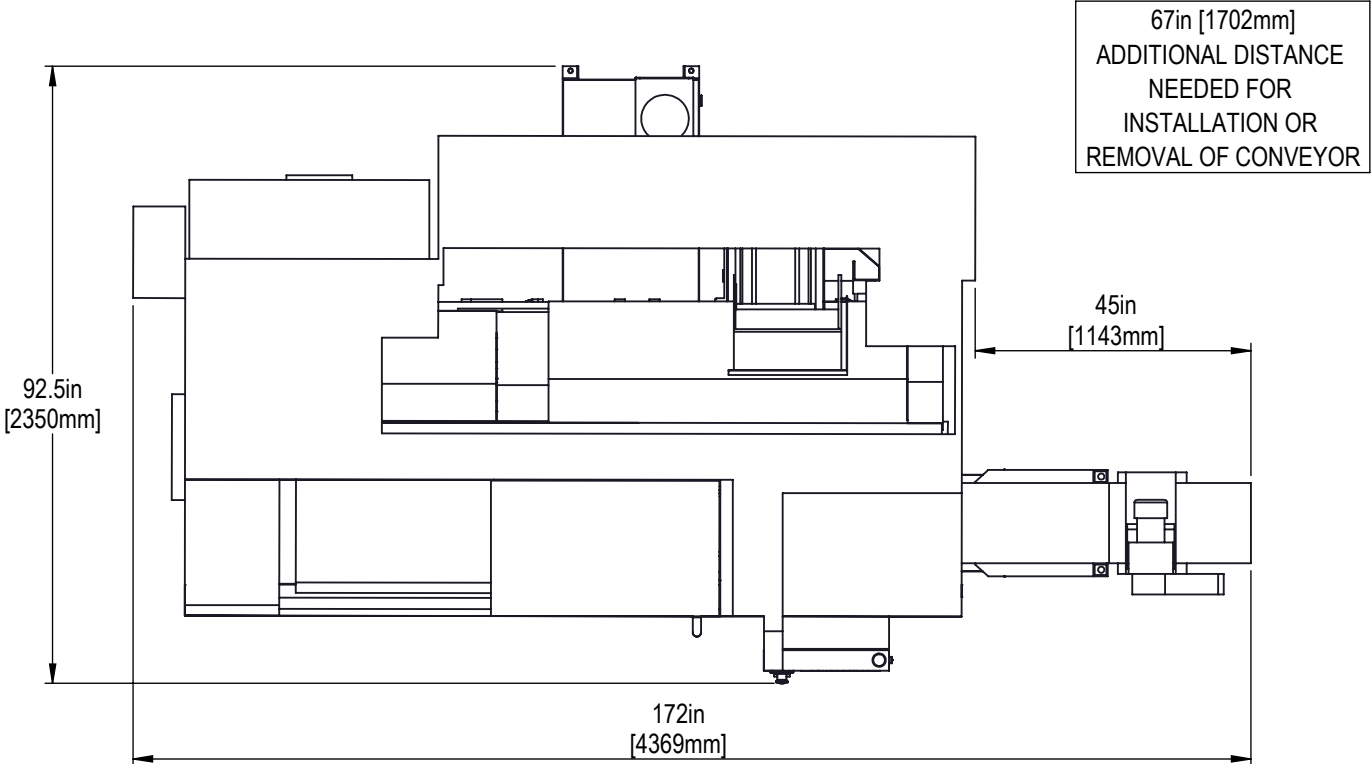


FRONT VIEW - OPERATIONAL HEIGHT DIMENSION

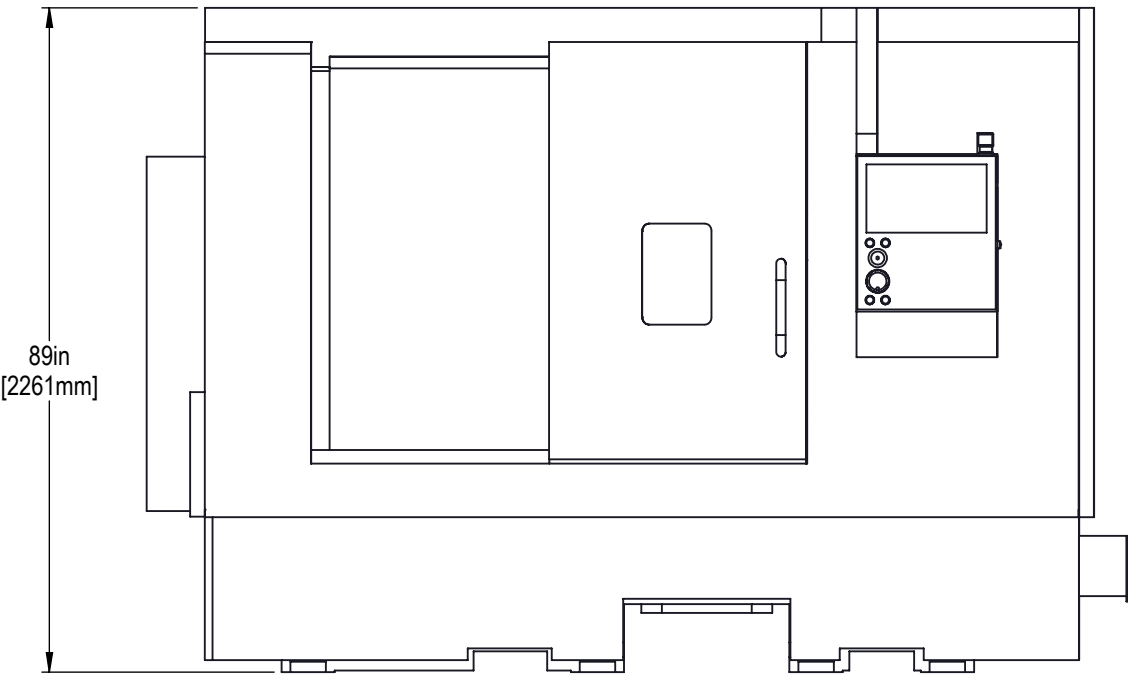


REFER TO THE INSTALLATION INSTRUCTIONS FOR STEP BY STEP GUIDANCE

TOP VIEW - OPERATIONAL DEPTH AND WIDTH DIMENSIONS

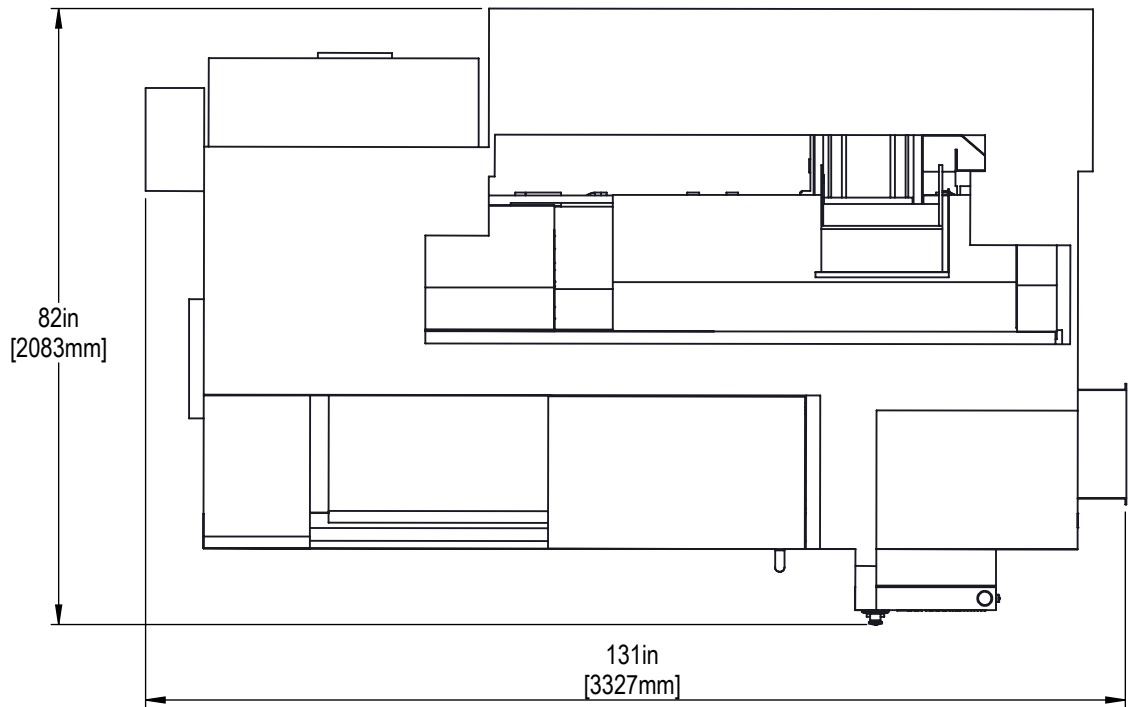


DRAWING NOT TO SCALE



DIMENSIONS SHOWN FROM THE BOTTOM OF THE BASE TO THE HIGHEST POINT

LEVELING SCREWS AND PADS ARE REMOVED TO REDUCE HEIGHT

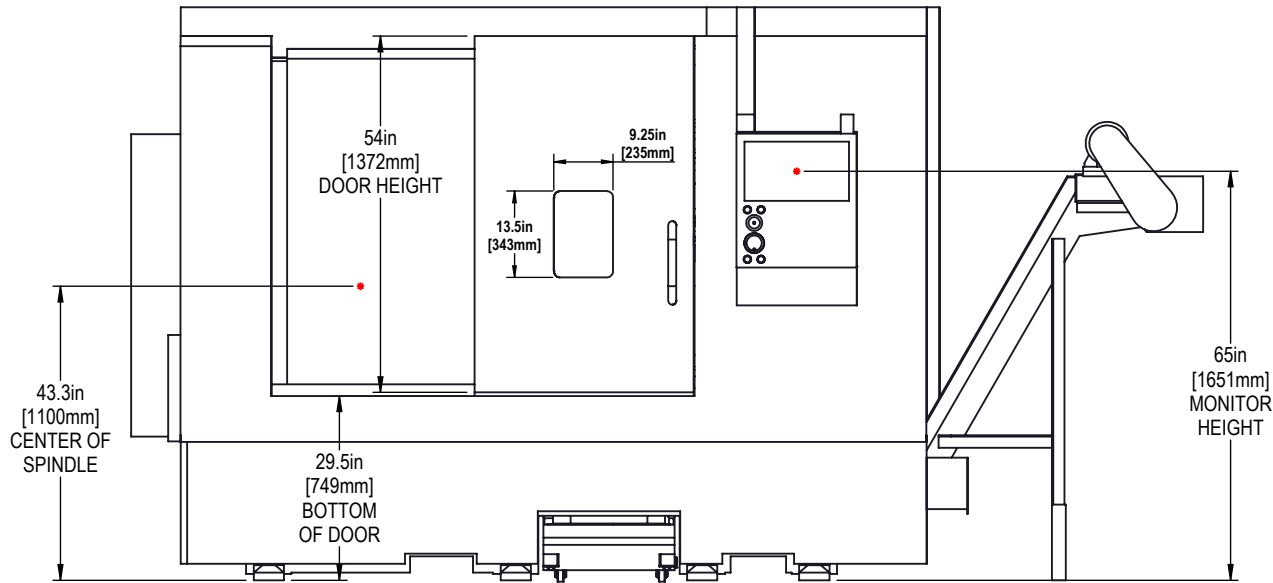


DIMENSIONS SHOWN WITH MACHINE OFF OF THE PALLET

OPTIONAL CONVEYOR SHIPS OFF OF THE MACHINE WHEN SELECTED

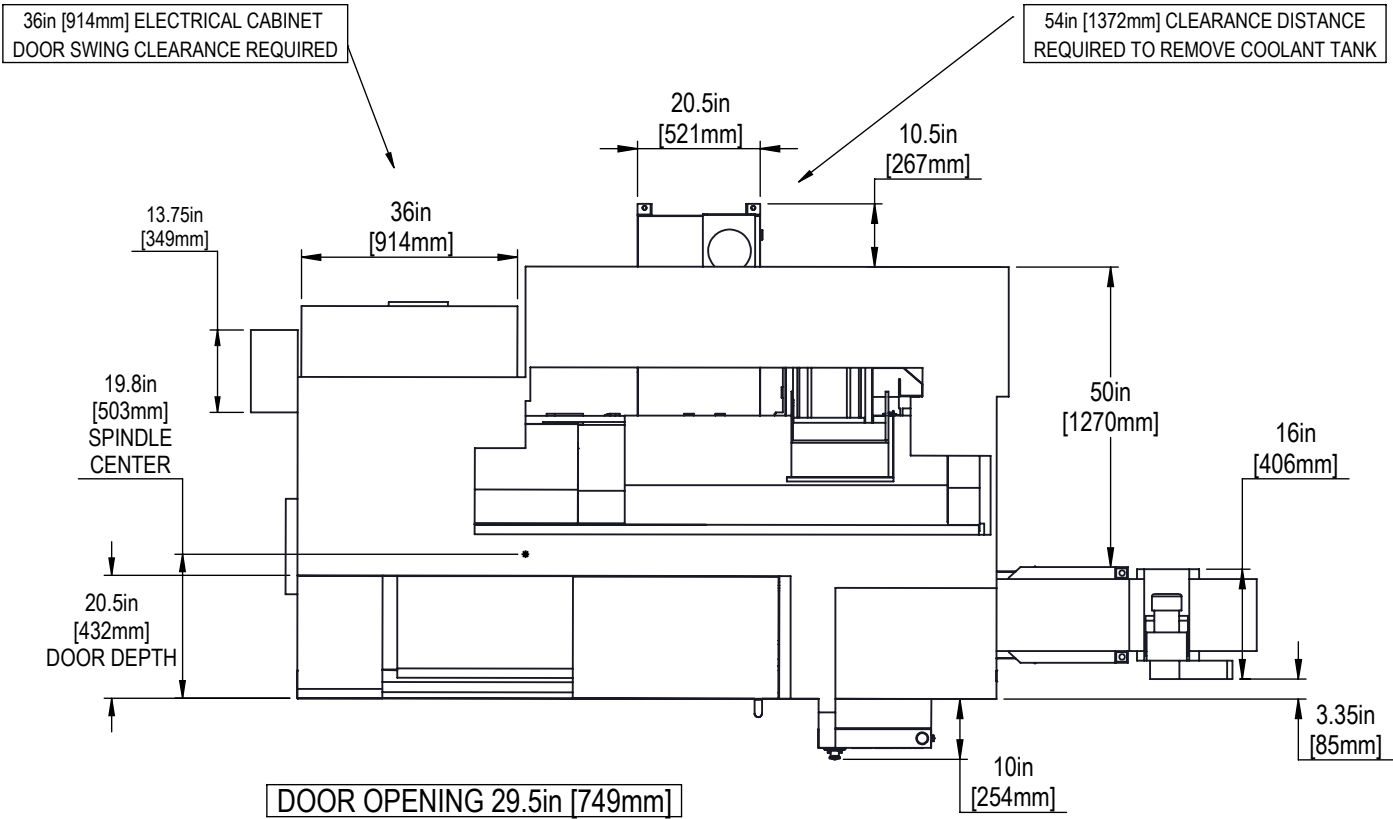


FRONT VIEW - HEIGHT DIMENSIONS



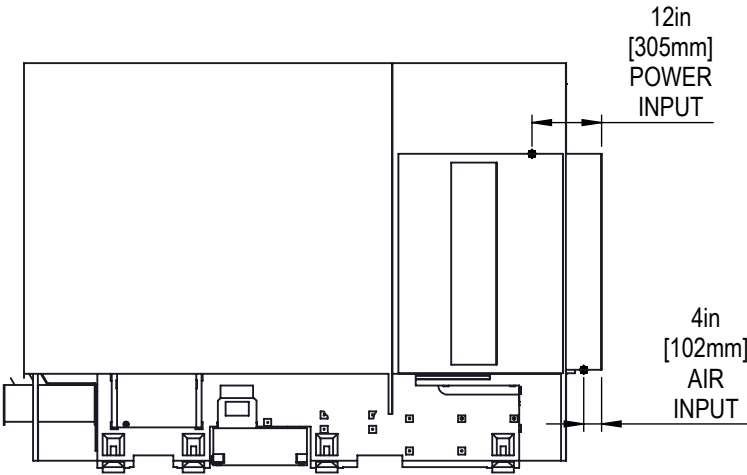
DRAWINGS NOT TO SCALE

TOP VIEW - DEPTH AND WIDTH DIMENSIONS

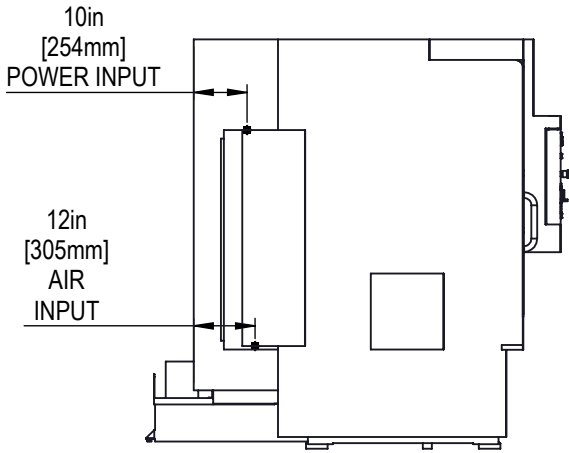




BACK VIEW



LEFT SIDE VIEW



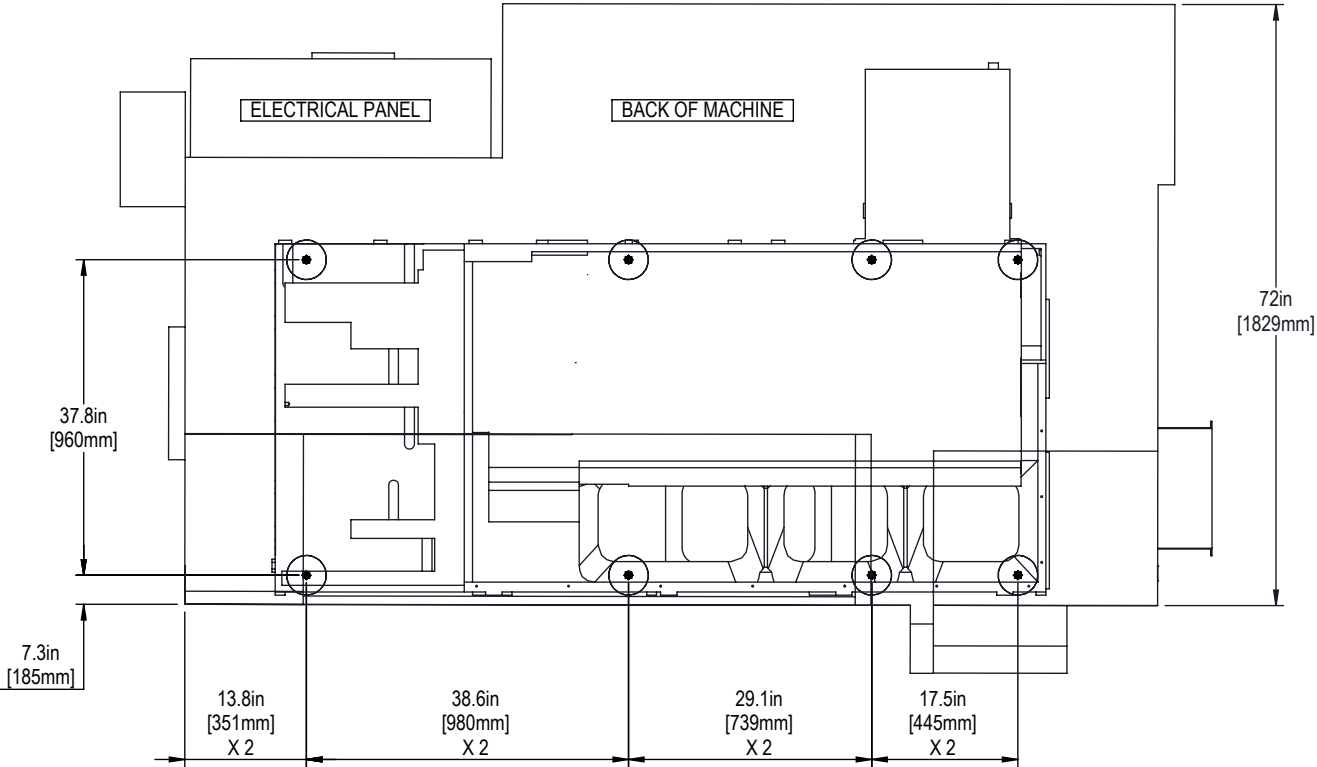
REFER TO MACHINE INSTALLATION INSTRUCTIONS FOR DETAILS

36in [914mm] CLEARANCE REQUIRED FOR ELECTRICAL CABINET DOOR SWING

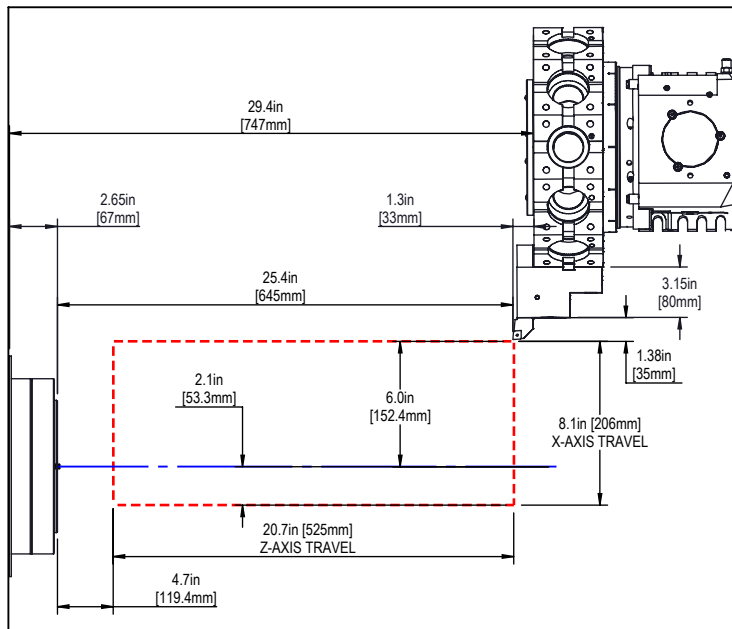
MACHINE MUST BE PLACED ON A SINGLE CONTINUOUS CONCRETE SLAB. SLAB MUST EXTEND 12in [305mm] BEYOND LEVELING PAD LOCATIONS IN ALL DIRECTIONS

THERE IS NO CURRENT ANCHORING REQUIREMENT FOR THIS MACHINE

TOP VIEW



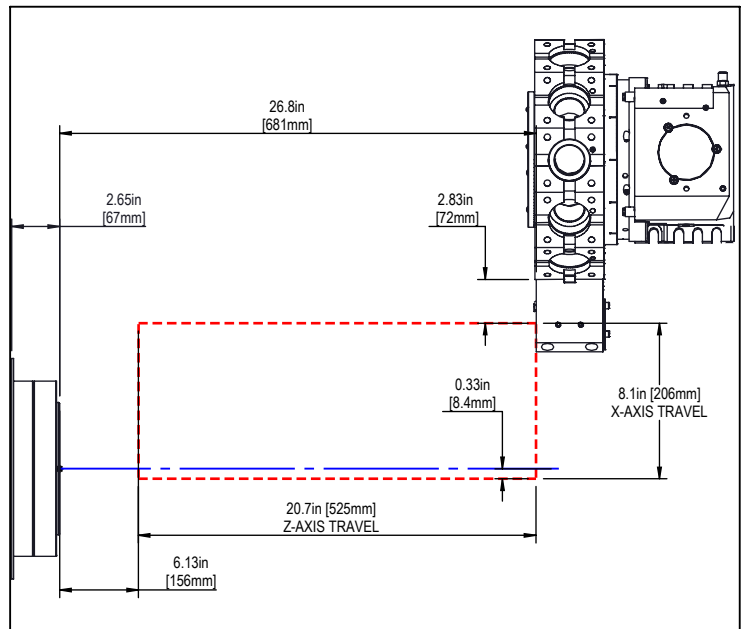
BMT65 OD TURNING



ALL Z-AXIS DIMENSIONS TO SPINDLE FACE

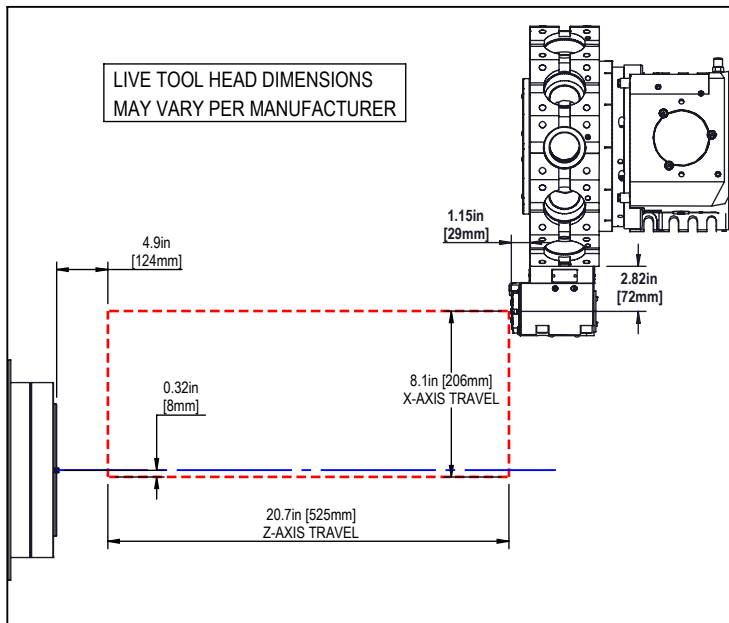
ALL X-AXIS DIMENSIONS ARE TO SPINDLE CENTER

BMT65 ID TURNING



NOTE: DRAWINGS NOT TO SCALE

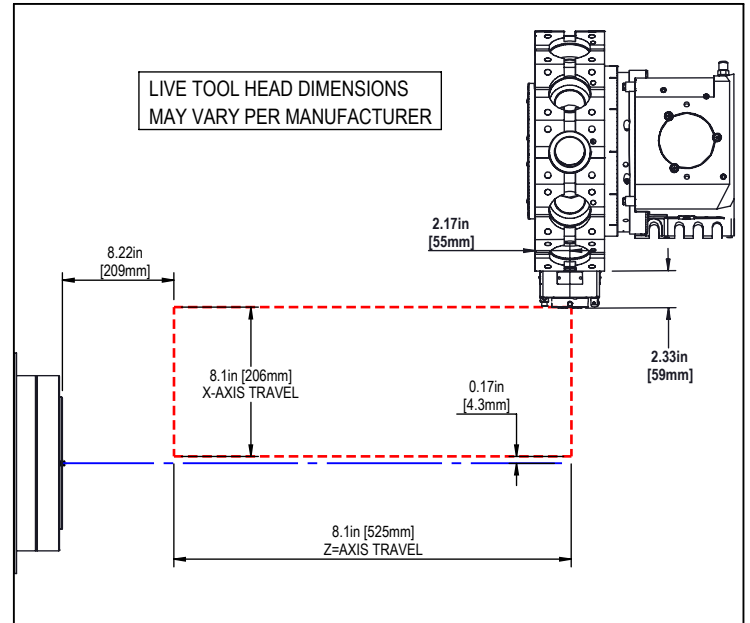
BMT65 90-DEGREE LIVE TOOL

LIVE TOOL HEAD DIMENSIONS
MAY VARY PER MANUFACTURER

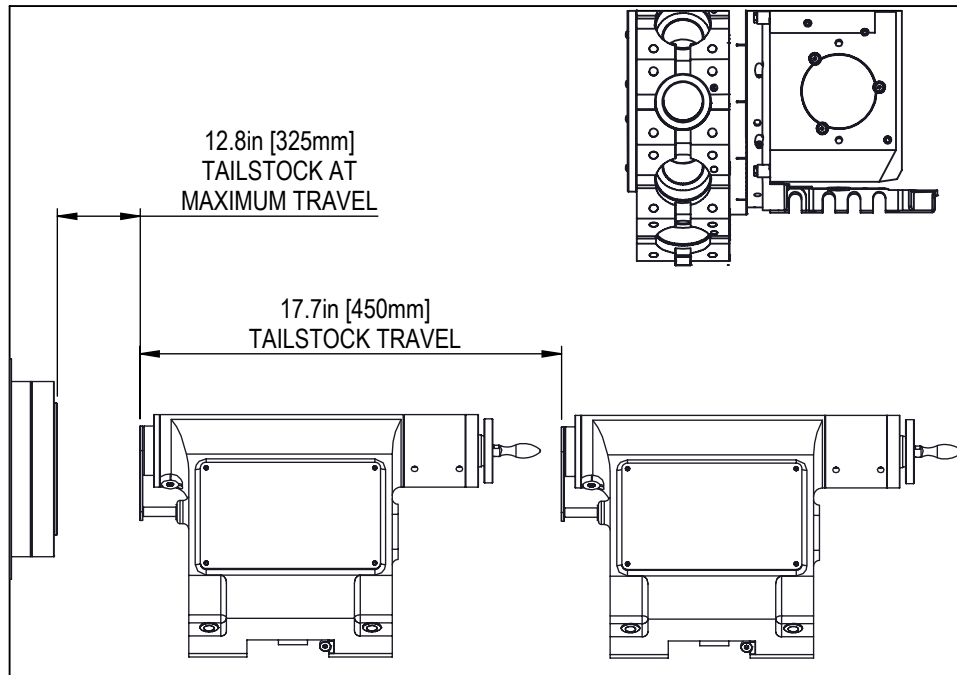
ALL Z-AXIS DIMENSIONS TO SPINDLE FACE

ALL X-AXIS DIMENSIONS ARE TO SPINDLE CENTER

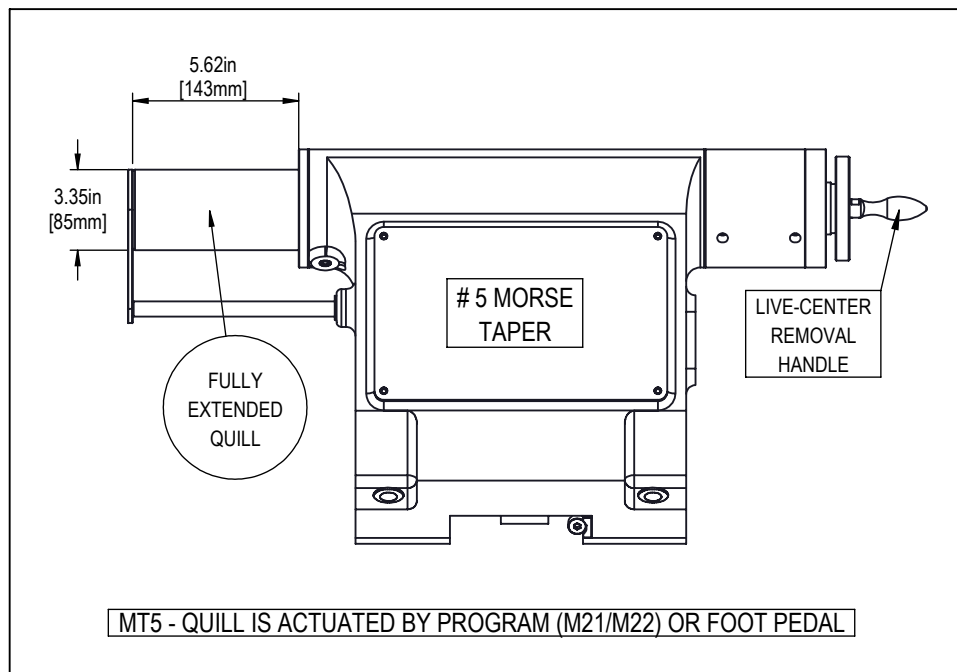
BMT65 STRAIGHT LIVE TOOL

LIVE TOOL HEAD DIMENSIONS
MAY VARY PER MANUFACTURER

NOTE: DRAWINGS NOT TO SCALE

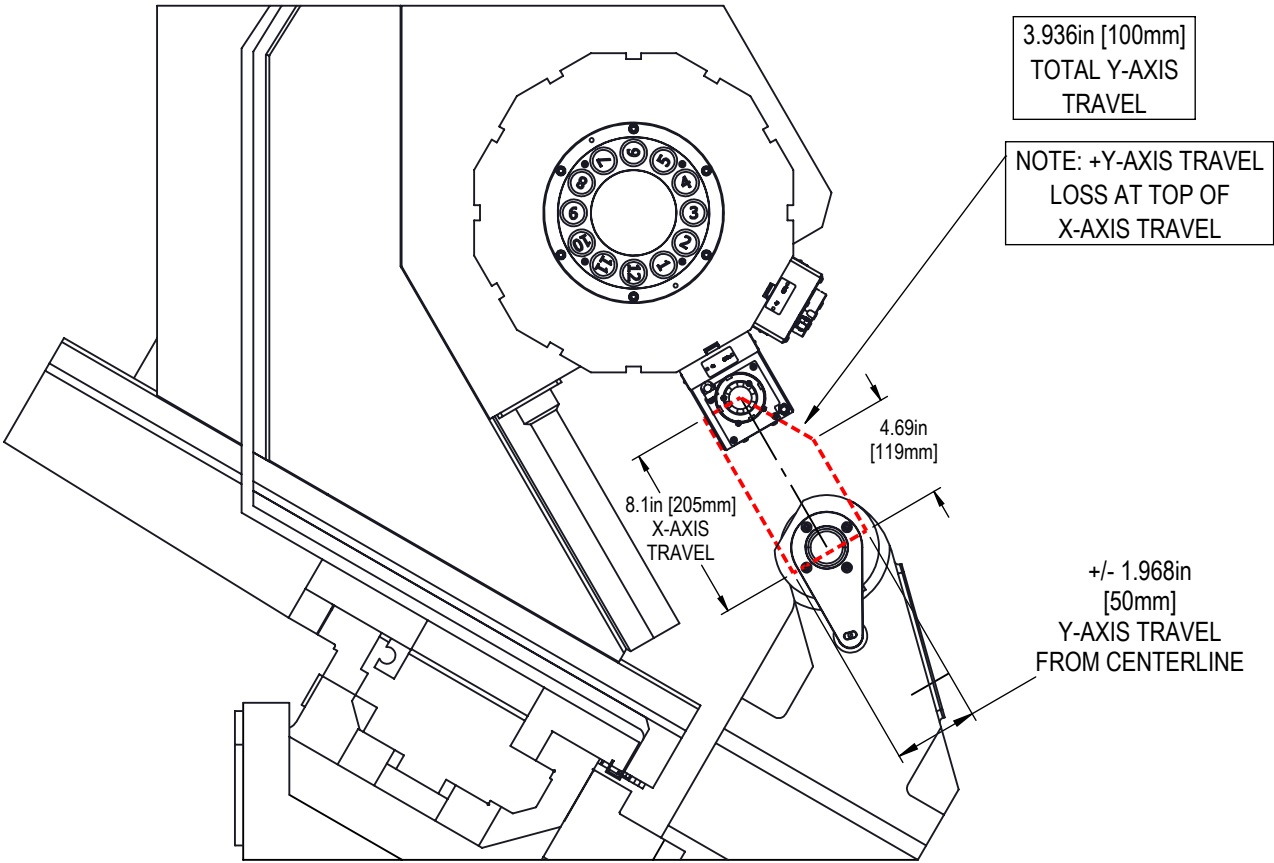


TAILSTOCK BODY IS TOWED AND POSITIONED BY THE Z-AXIS WEDGE

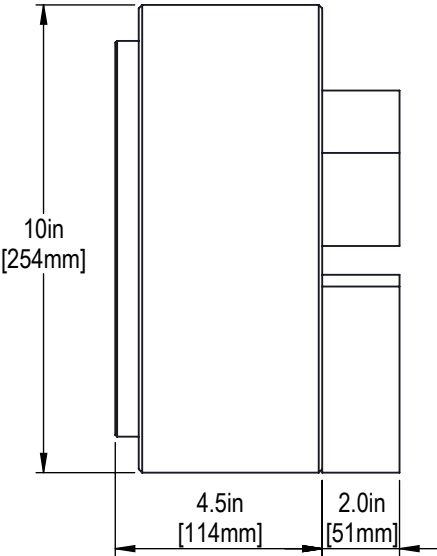


M321 (P) - TAILSTOCK ENGAGE AND POSITION

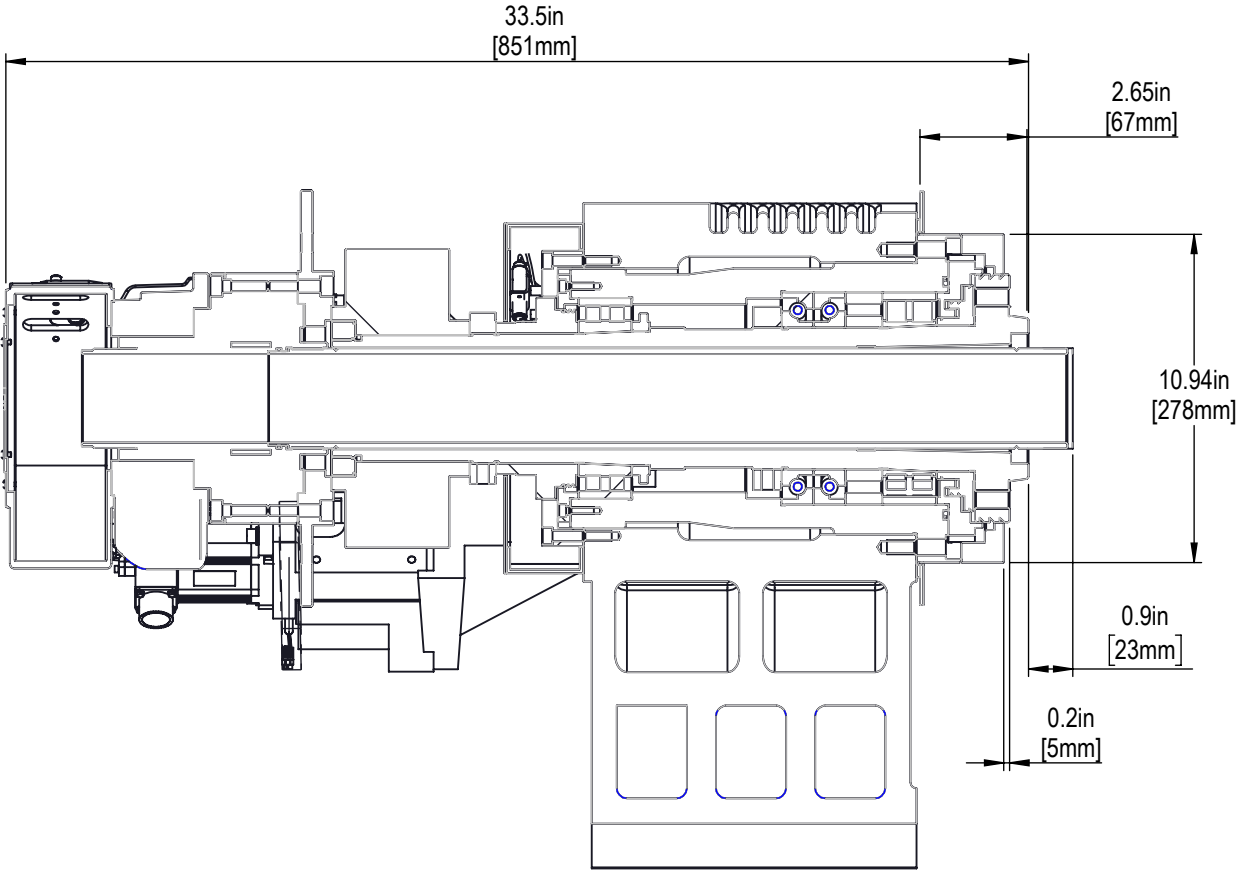
M322 - TAILSTOCK PARK OR HOME AND DISENGAGE



SIDE VIEW



DESCRIPTION	
NOMINAL CHUCK DIAMETER	10in [254mm]
THRU BORE DIAMETER	3.00in [76mm]
NUT THREAD	M85 X 2.0
FACE TO DRAWTUBE EXTENDED	2.6in [66mm]
FACE TO DRAWTUBE RETRACTED	1.6in [41mm]
MASTER JAW SERRATIONS	1.5mm X 60°
MASTER JAW SCREW THREADS	0.47in [12mm]
MASTER JAW SCREW SPACING	1.18in [30mm]
MASTER JAW SLOT WIDTH	0.63in [16mm]
SPINDLE NOSE	A2-8
MAXIMUM SPEED	3200-rpm

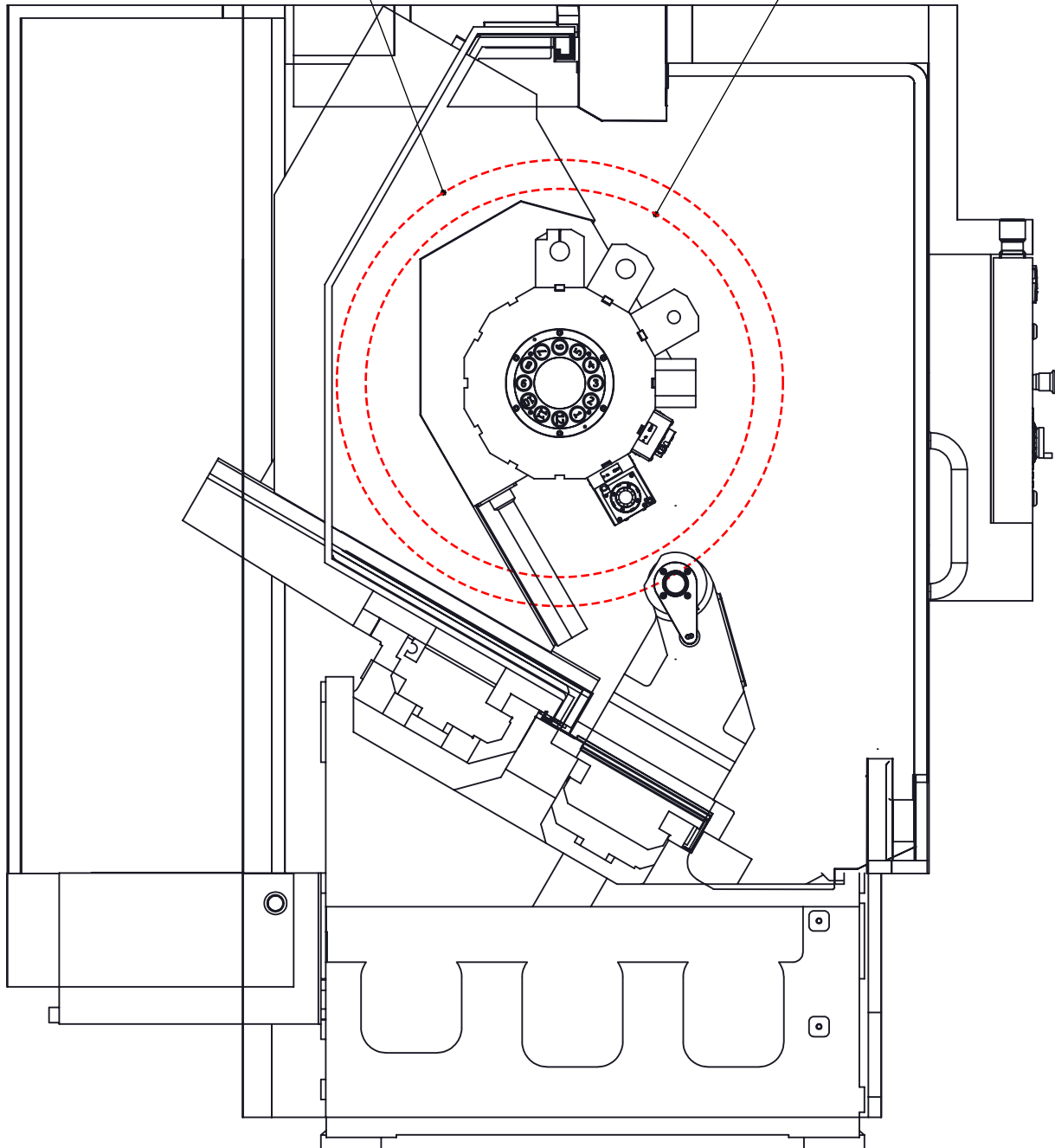


DESCRIPTION	
DRAWTUBE THREAD	M85 x 2.0
DRAWTUBE INTERNAL DIAMETER	2.95in [75 mm]
DRAWTUBE EXTENDED DISTANCE FROM FACE	2.6in [66mm]
DRAWTUBE RETRACTED DISTANCE FROM FACE	1.6in [41mm]
SPINDLE INTERNAL BORE DIAMETER	3.39in [86mm]
SPINDLE INTERNAL COUNTERBORE DIAMETER	4.33in [110mm]
SPINDLE INTERNAL COUNTERBORE DEPTH	0.59in [15mm]

HAAS AUTOMATION STRONGLY RECCOMENDS TAKING DIRECT MEASUREMENTS FROM THE MACHINE FOR THE PURPOSE OF USING 3RD-PARTY WORKHOLDING

Maximum Tool Length from
Turret Side (Periphery) to Waycover
Interference is 11in [280mm]

Maximum Tool Length from
Turret Side (Periphery) to Tailstock
Body is 8in [203mm]



CLEARANCE BEHIND BMT65 TURRET IS 2in [51mm]
FROM TURRET FACE. MORE CLEARANCE IF RAISED ON HOLDER