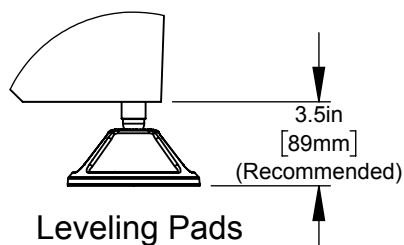
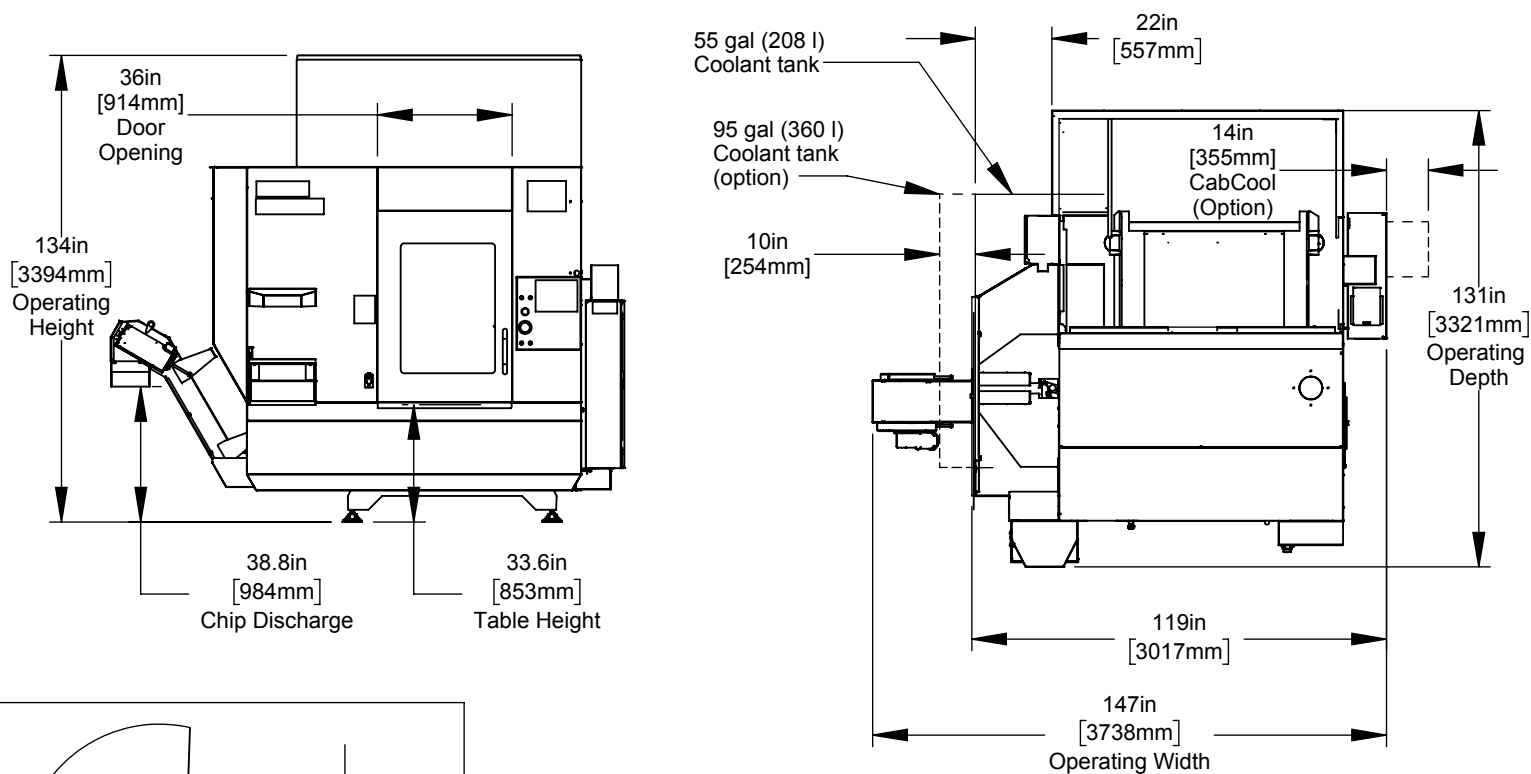
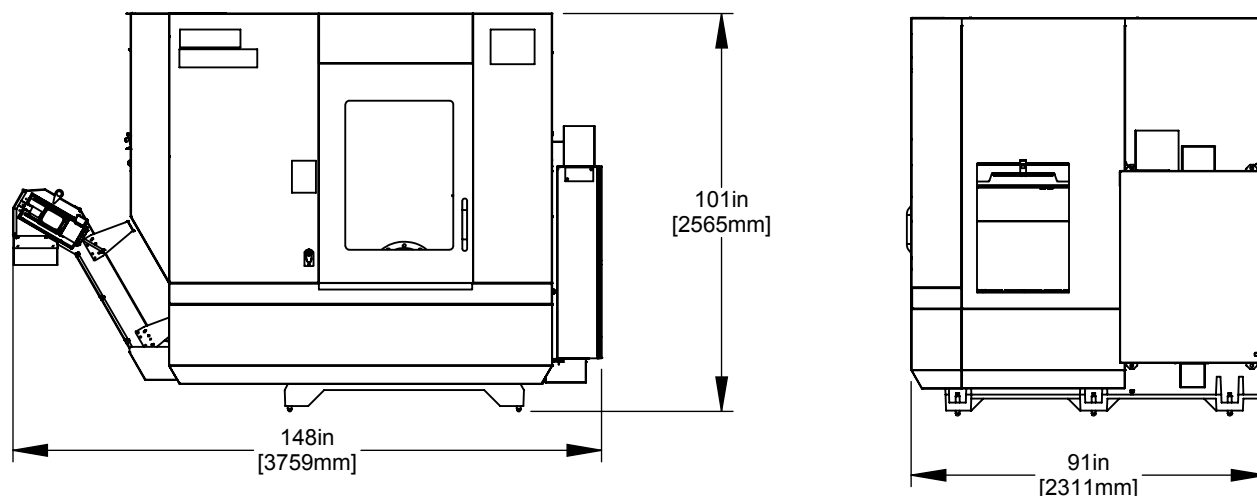


Operating Dimensions



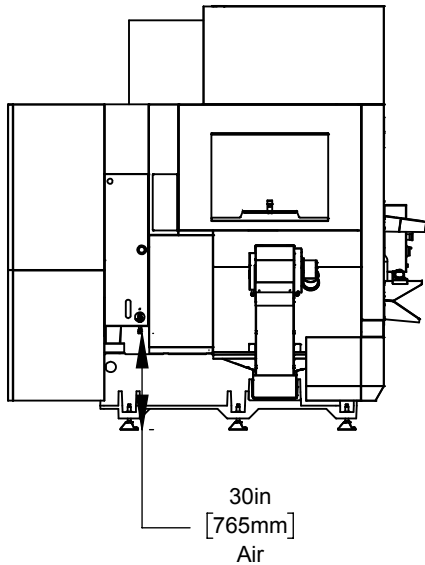
As Shipped Dimensions



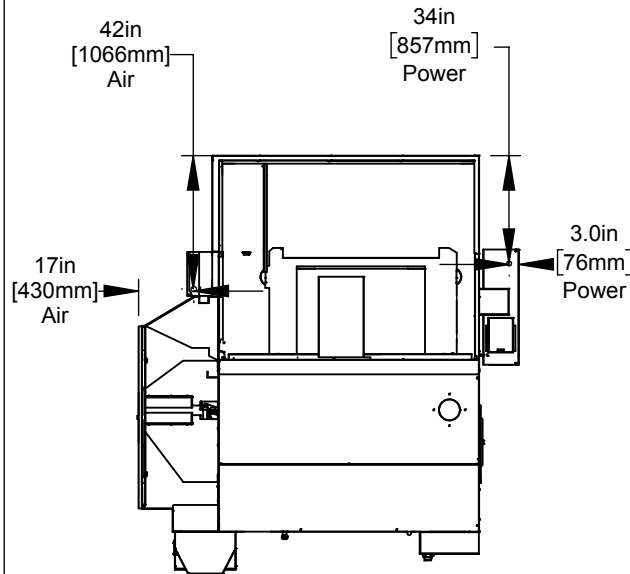
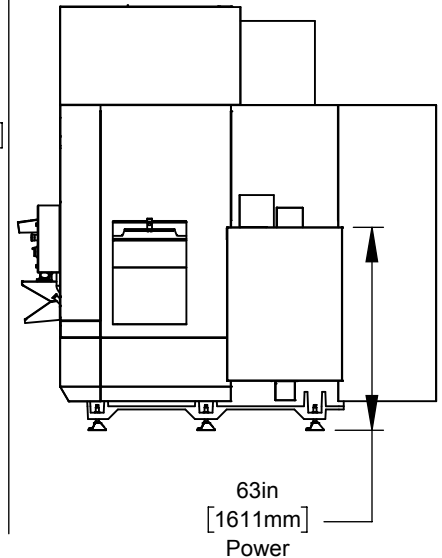
For lifting instructions refer to lifting sticker on machine, service document ES0246, or contact your local HFO

All dimensions based on stackup of sheetmetal, subject to variation of 1/2" (13 mm)

*Due to continual product improvements, machine dimensions are subject to change without notice.

Air & PowerLeft View
Air Connection

Top View

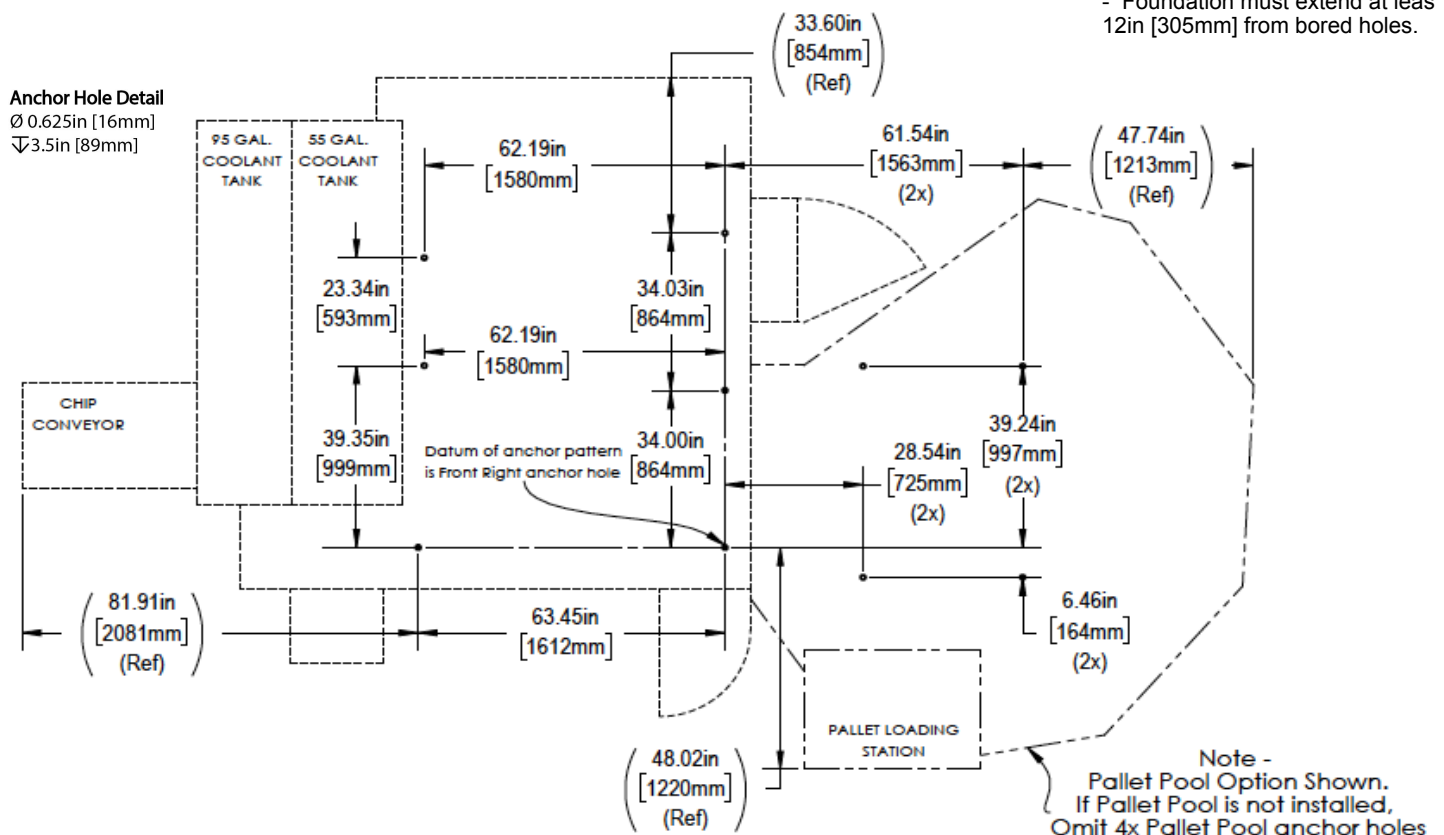
Right View
Power Connection

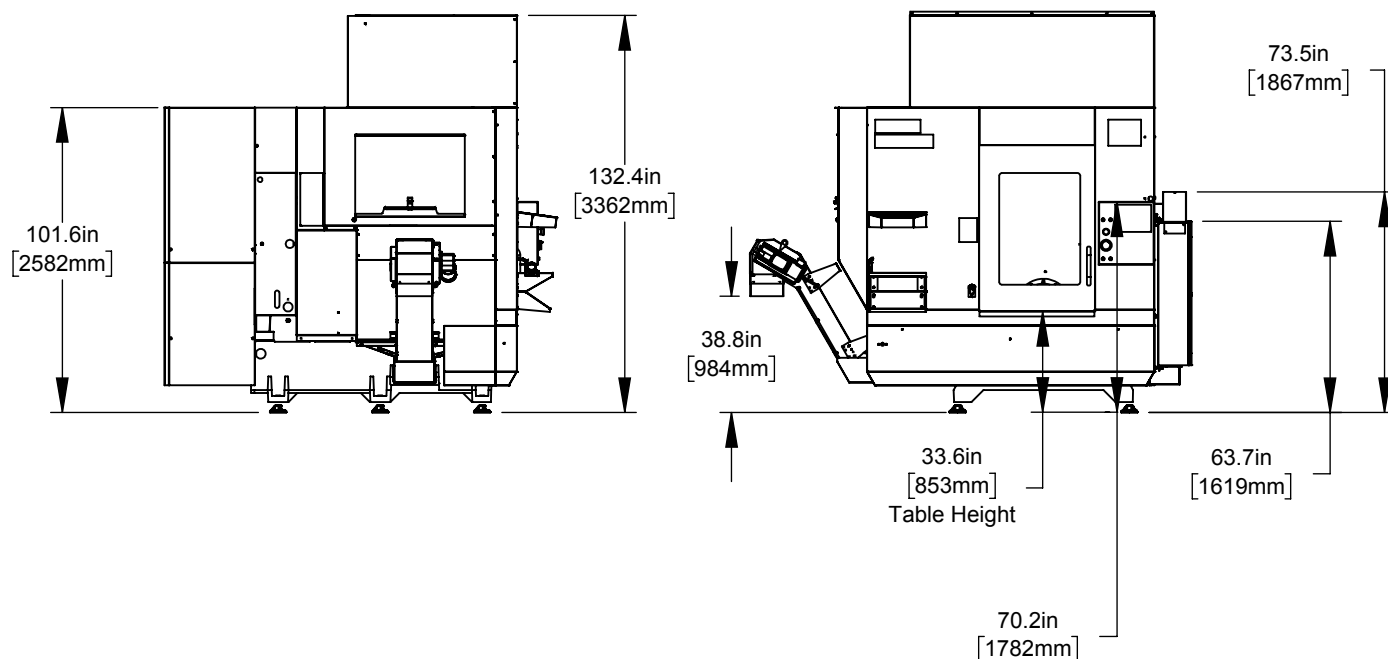
All dimensions based on stackup of sheetmetal, subject to variation of 1/2" (13 mm)
 UMC-1000 Pallet Pool utilities connection locations remain the same as the base machine

Anchor Pattern

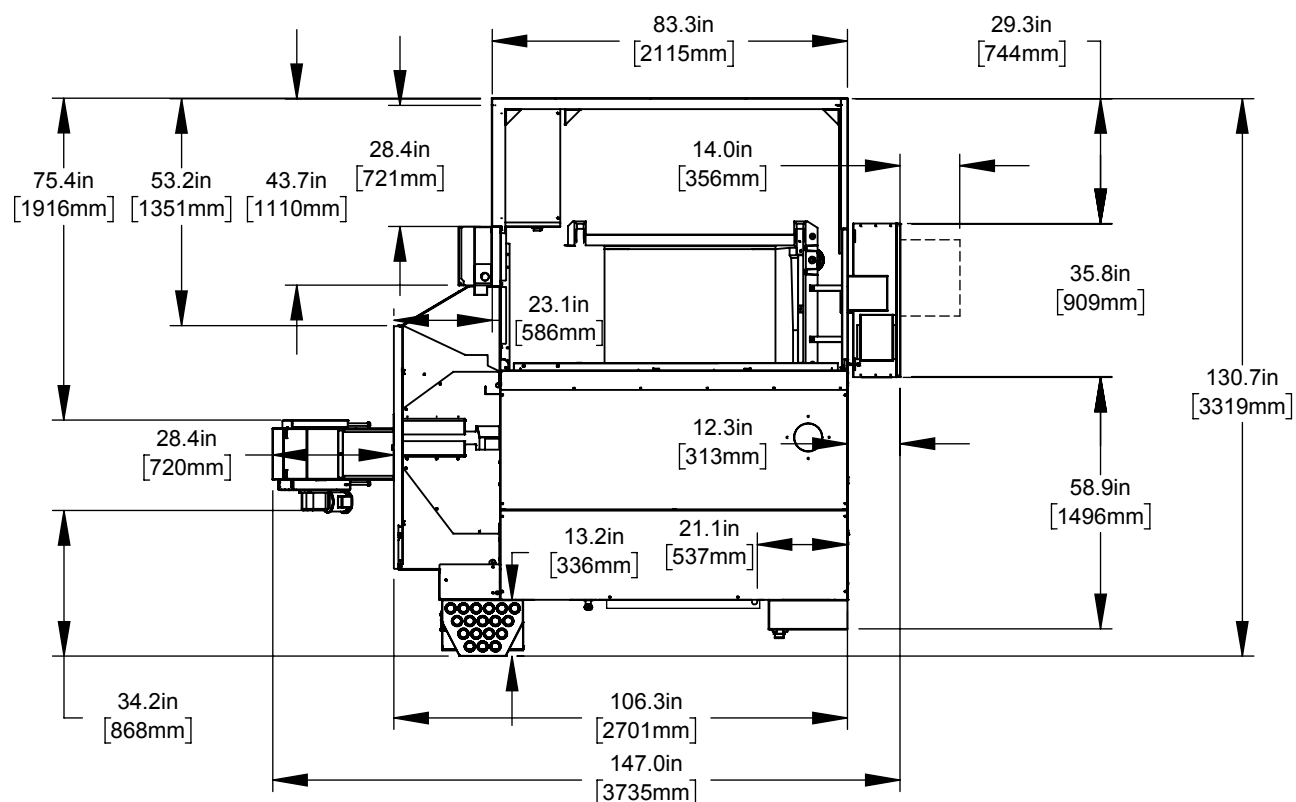
Note:

- Foundation must extend at least 12in [305mm] from bored holes.



Height Breakdown

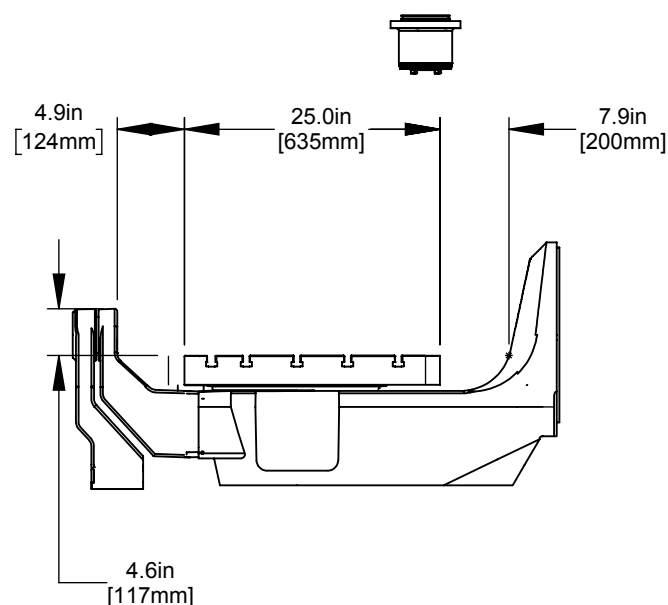
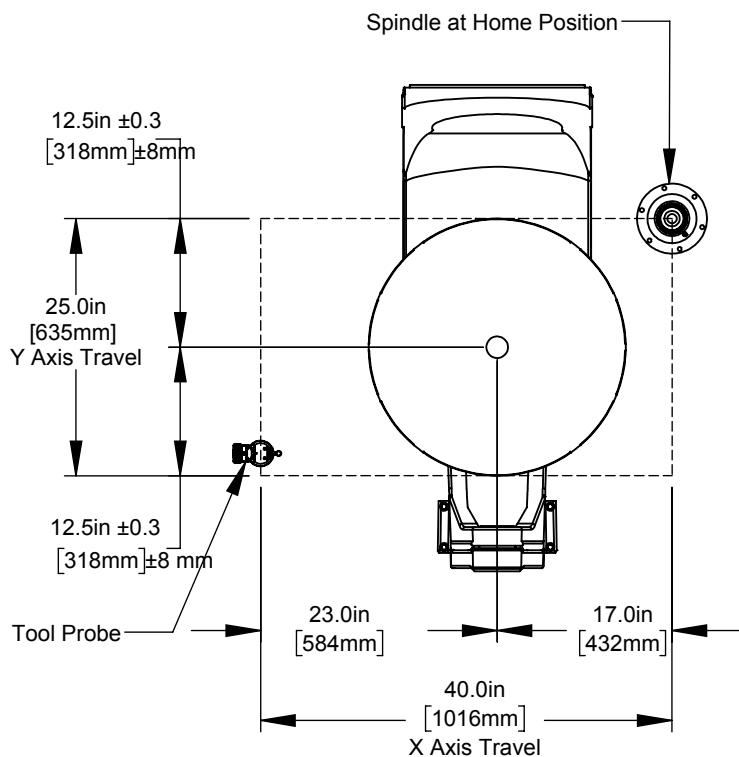
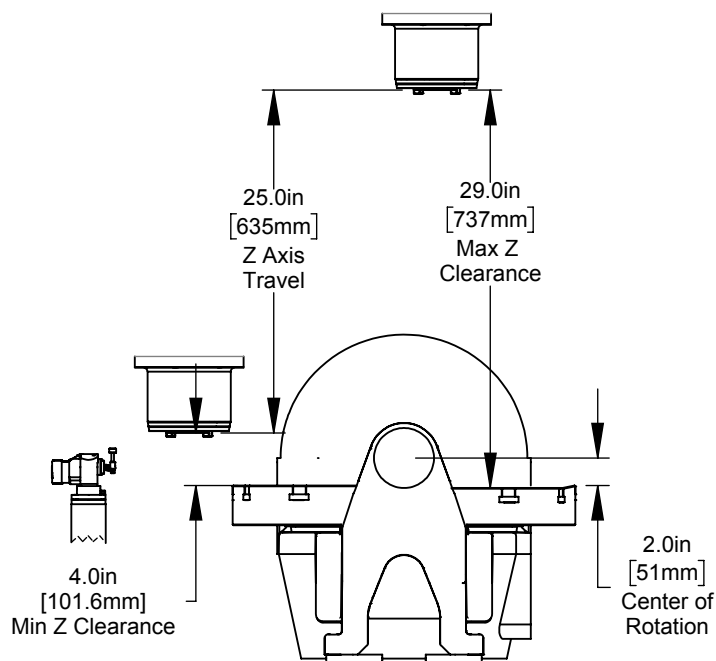
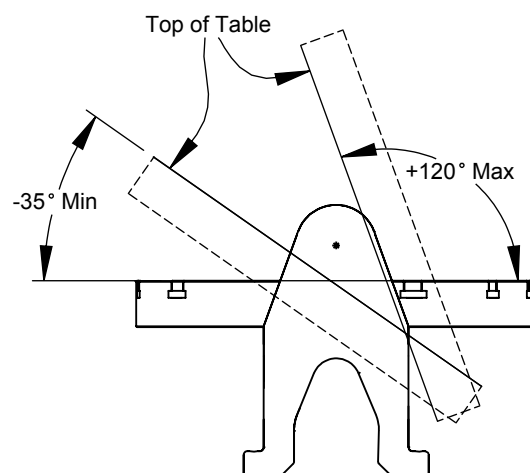
All dimensions based on stackup of sheetmetal, subject to variation of 1/2" (13 mm)

Width Breakdown

All dimensions based on stackup of sheetmetal, subject to variation of 1/2" (13 mm)

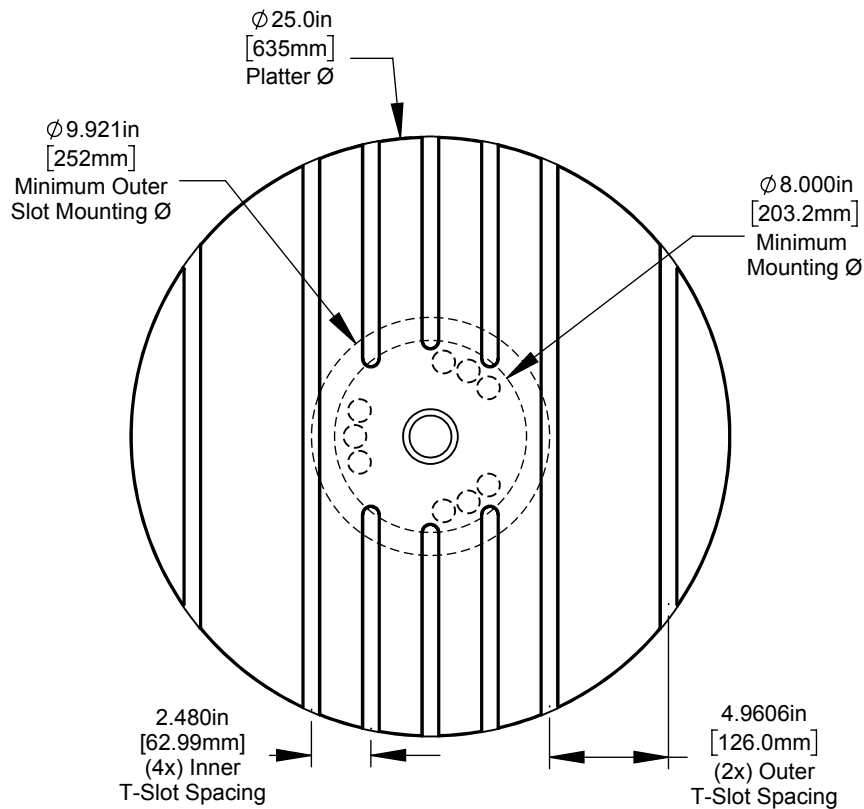
*Due to continual product improvements, machine dimensions are subject to change without notice.

Max Travels		
X	40 in	1016mm
Y	25 in	635mm
Z	25 in	635mm
A	-35° to +120°	
C	360°	

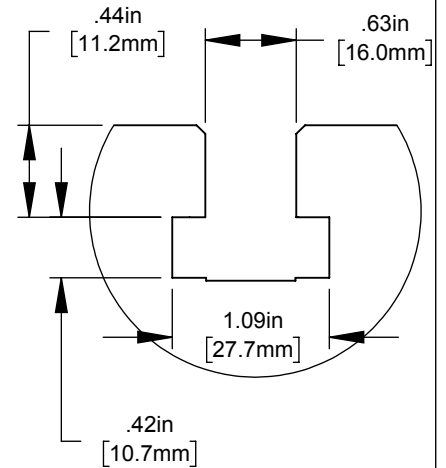
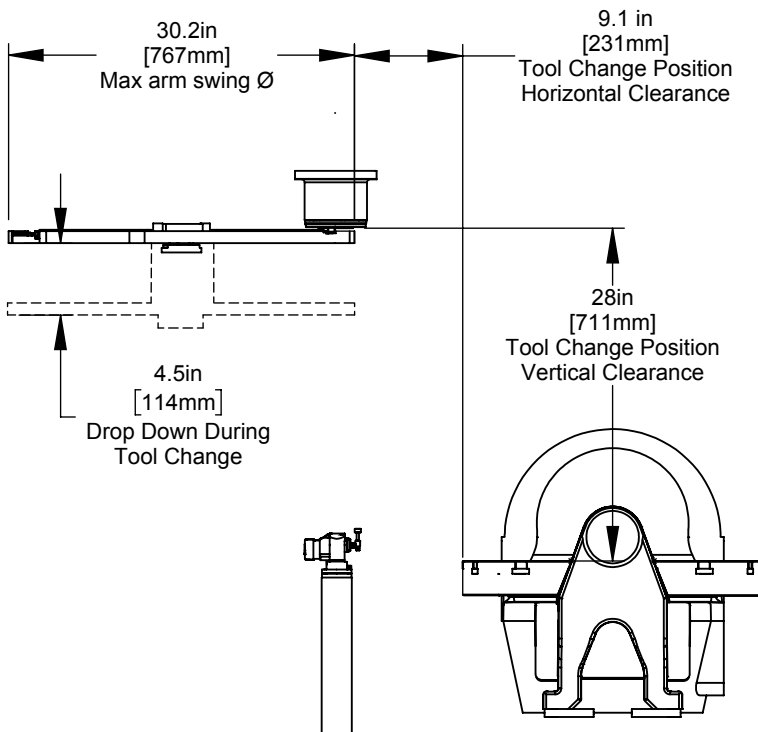
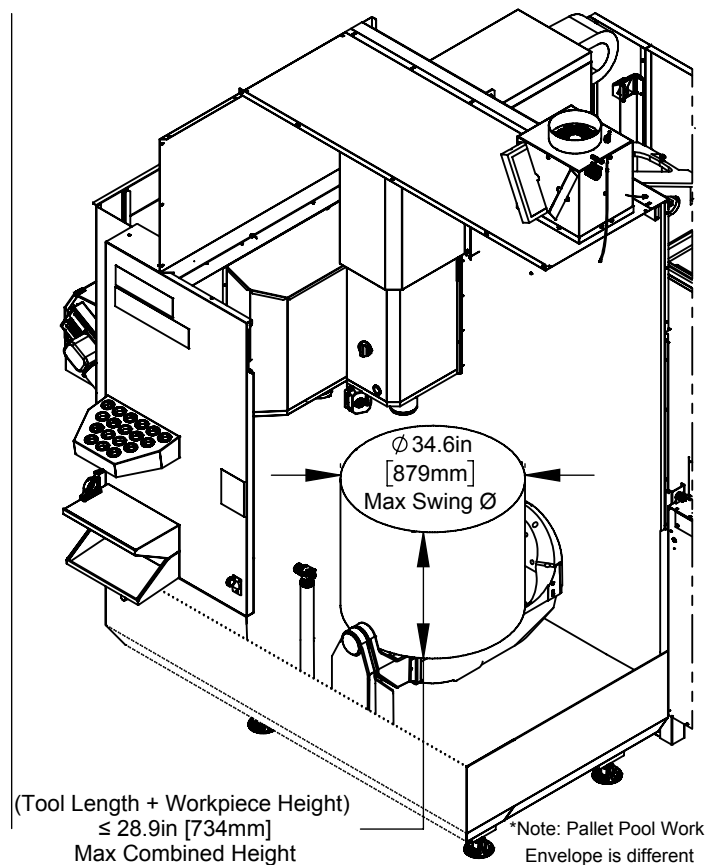
X&Y-Axis ClearanceZ-Axis Clearance*Table Rotation

*Pallet Pool option changes Z clearance.
See PP specific clearance diagram if applicable

*Due to continual product improvements, machine dimensions are subject to change without notice.

Table

(9x) Phantom holes are not available to use for part fixturing

T Slot DetailTool ChangerWork Envelope*

*Due to continual product improvements, machine dimensions are subject to change without notice.