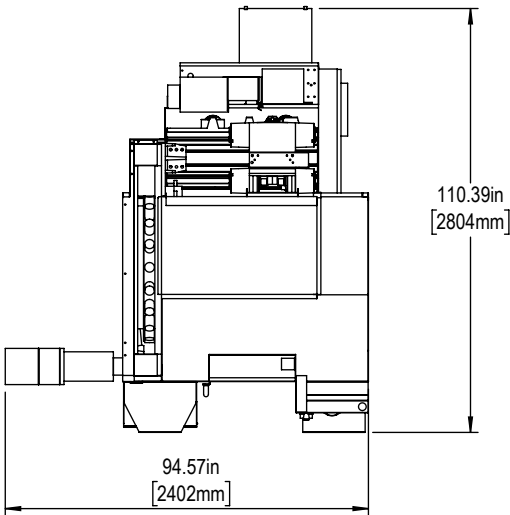
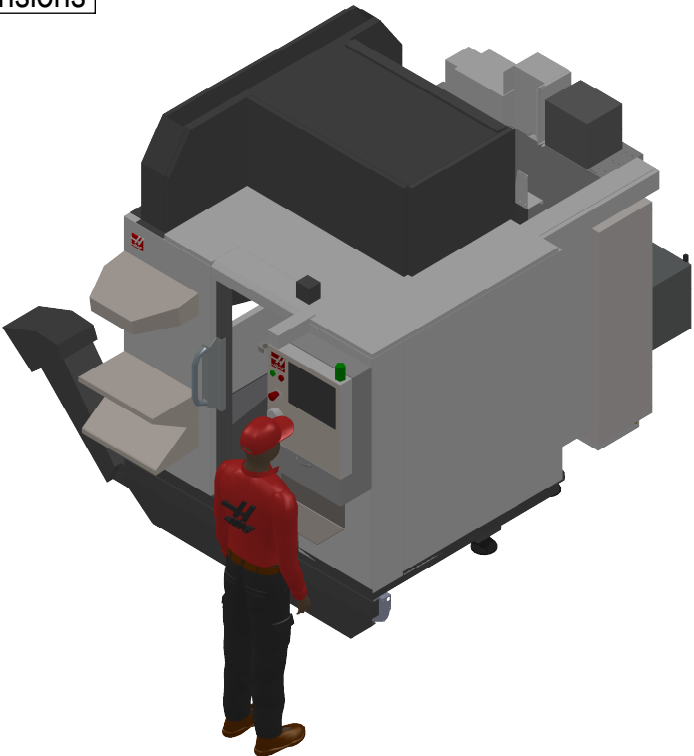
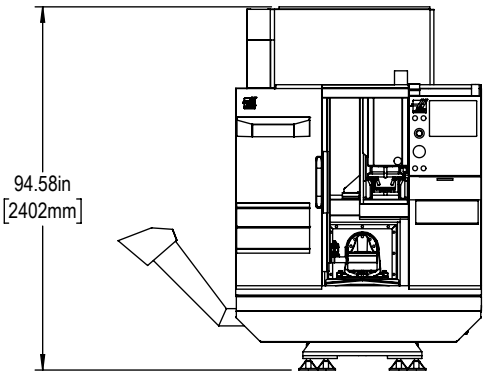
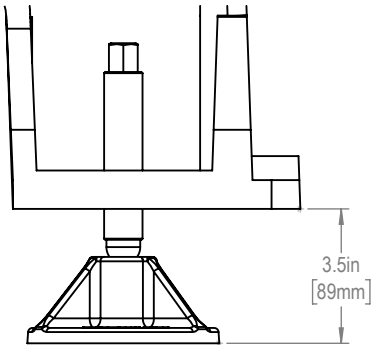




Installed Dimensions

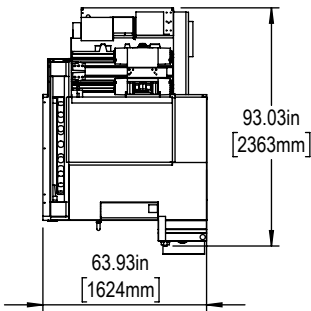
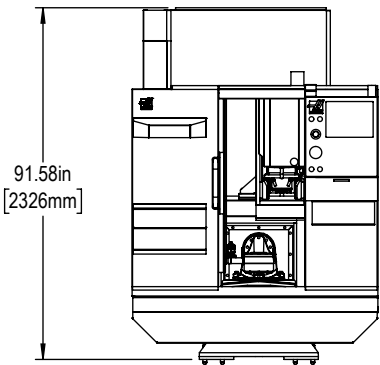


Leveling Pad Height

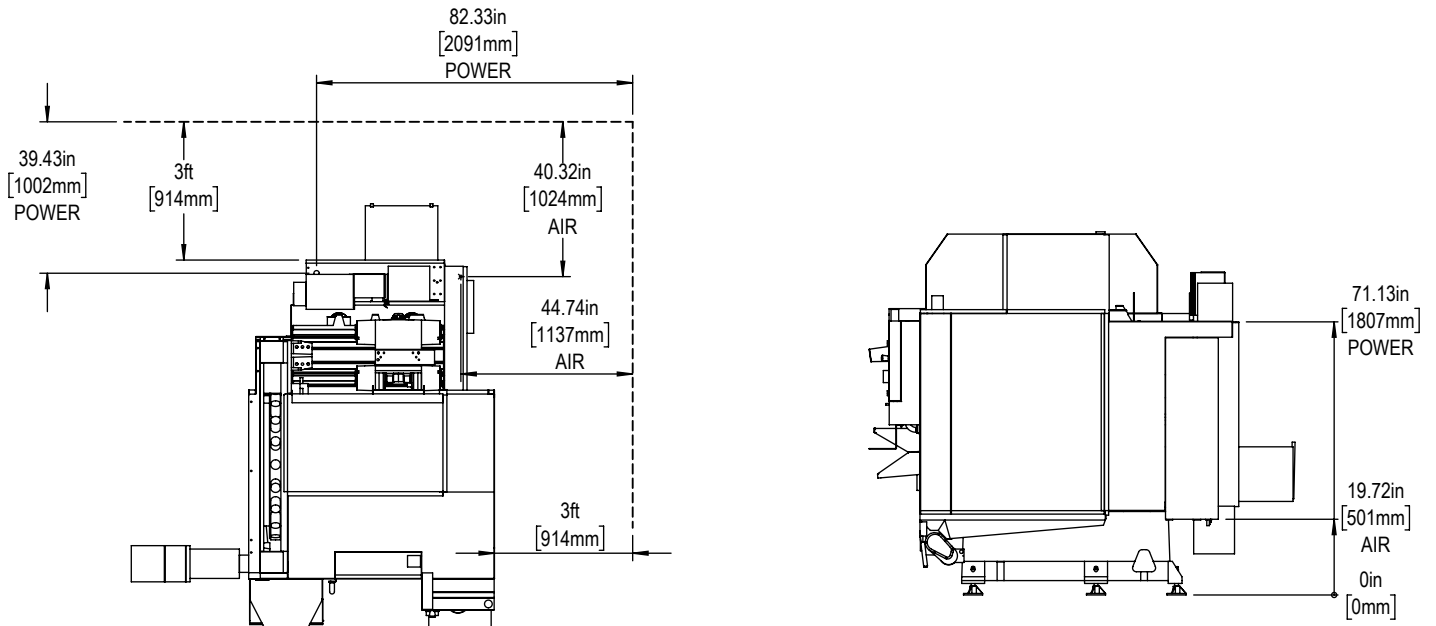


*All Height Dimensions Based on Suggested Leveling Pad Height

Shipping Dimensions



Air & Power



Maintain 3 feet [915mm] clearance to the nearest obstruction around all sides of machine perimeter for maintenance access

Note:

Machine must be placed on one continuous concrete slab. Slab should extend 12in [305mm] beyond anchor holes in all directions

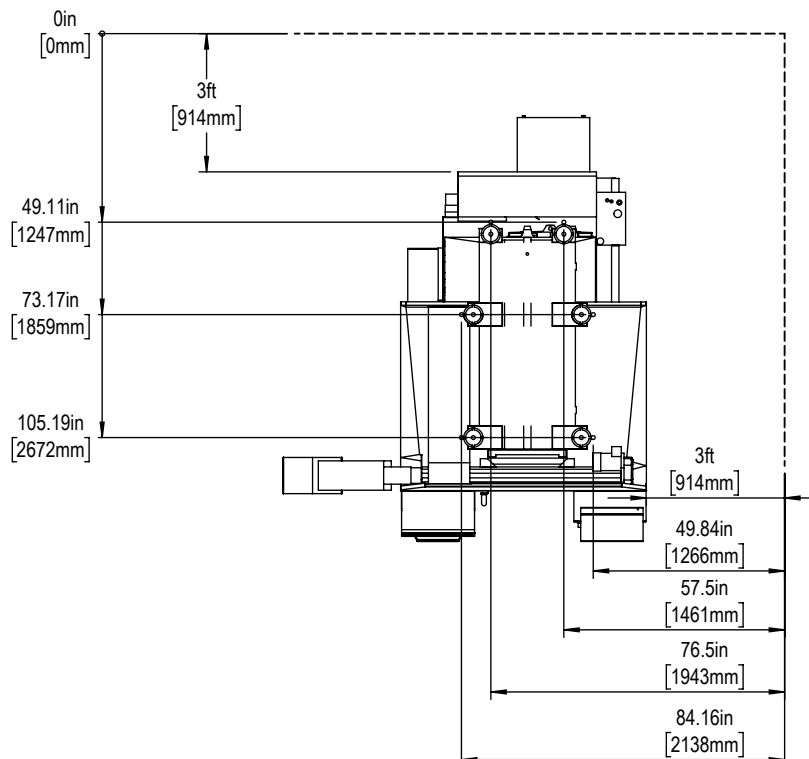
Anchor Pattern

Anchor Hole Detail

Ø 1.0in[25mm]

▽ 2.0in[50mm]-

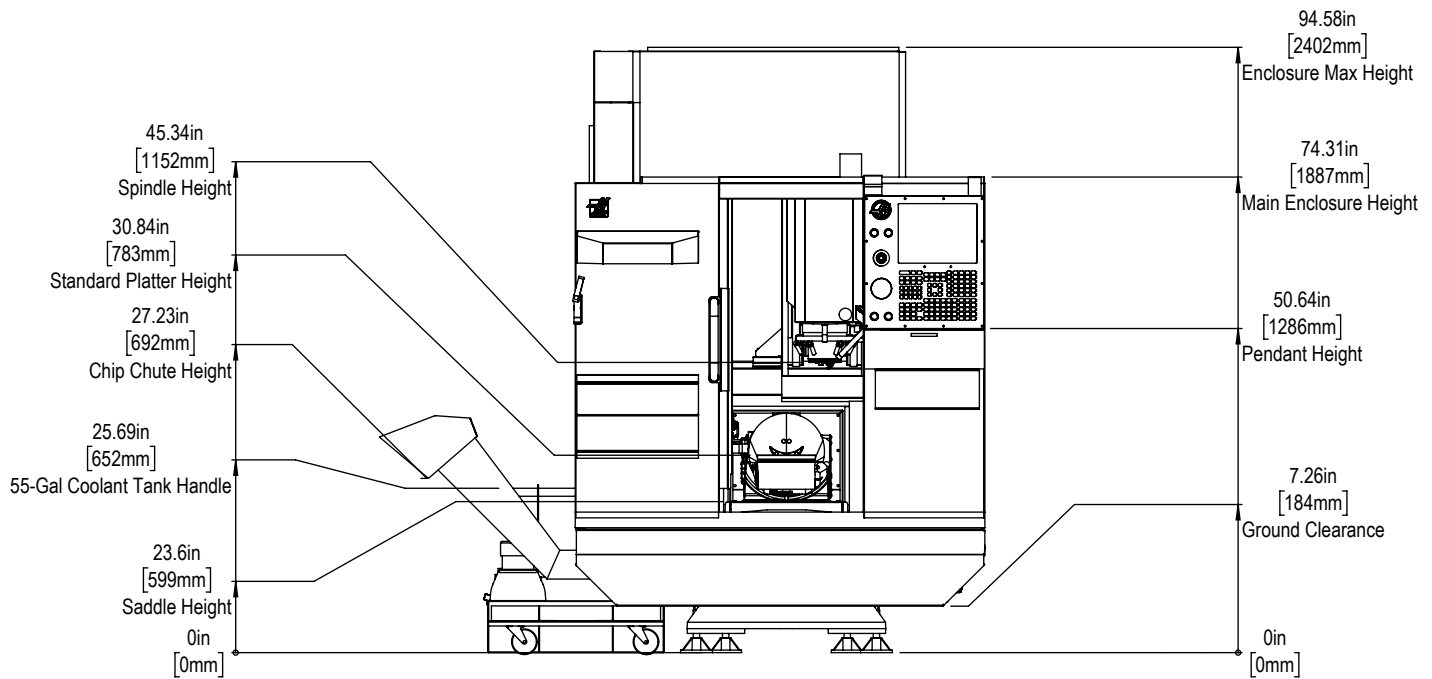
▽ 2.5in[66mm]



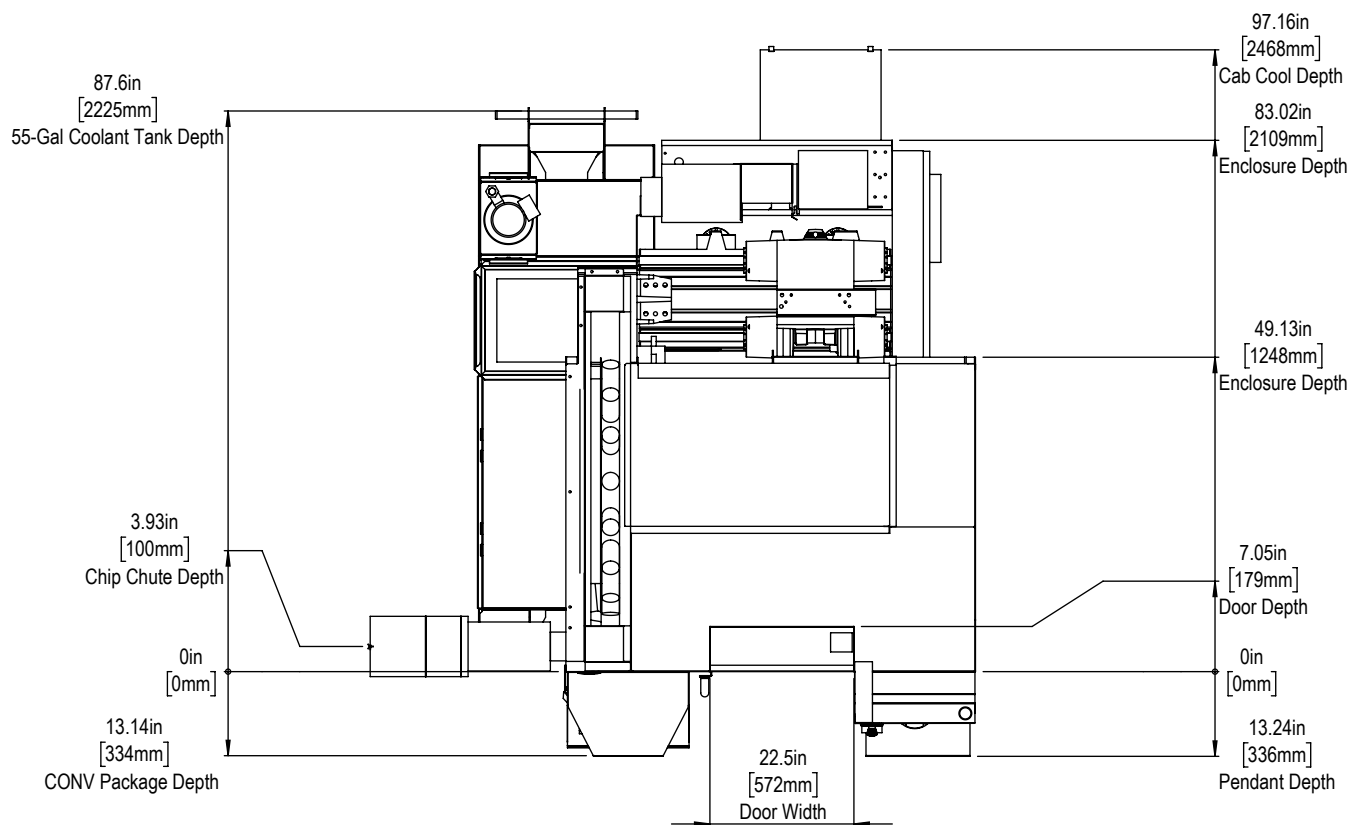
For precise locations and specifications please use template in Anchoring Kit found at Haascnc.com



Height Breakdown

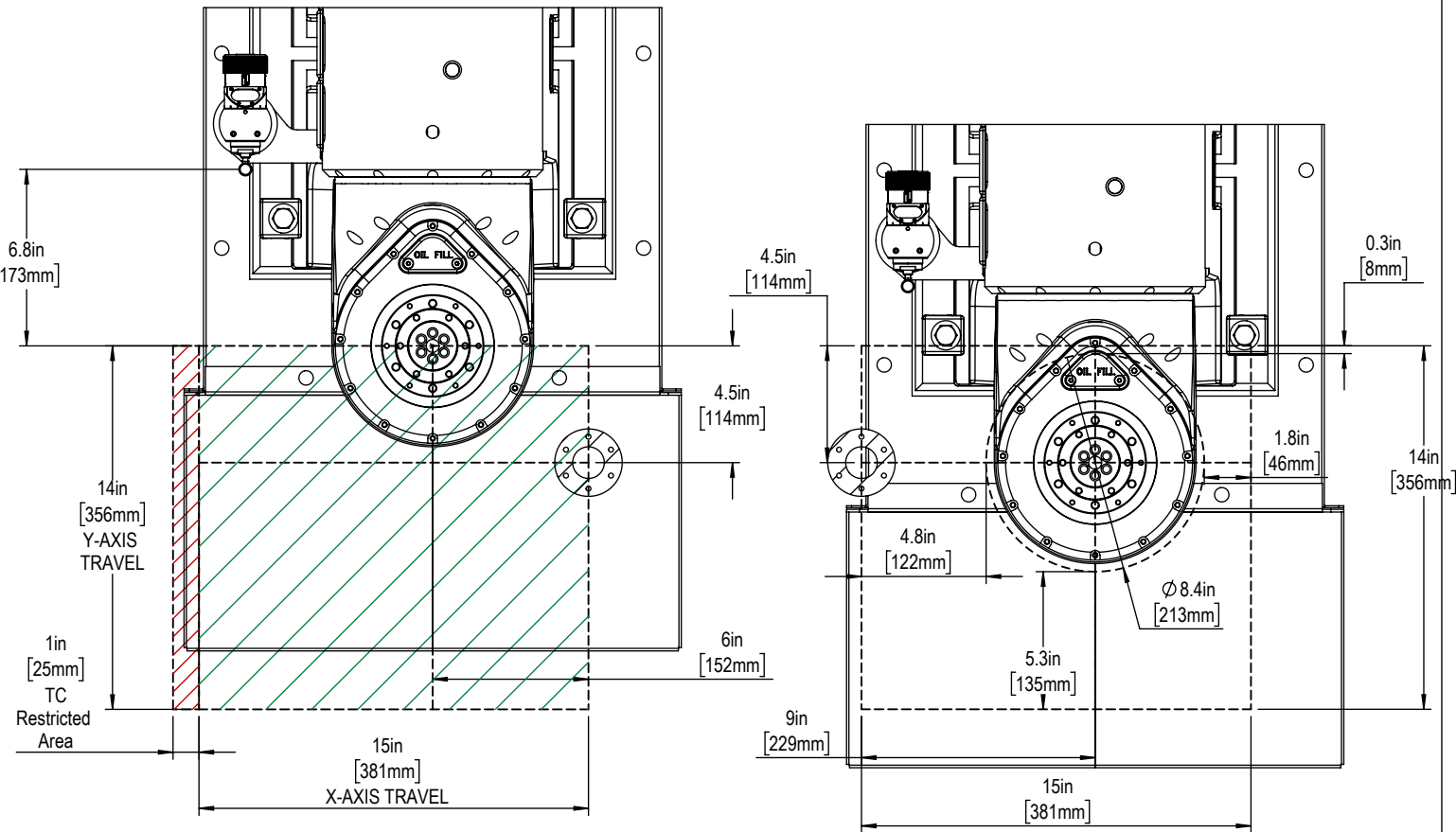


Width Breakdown

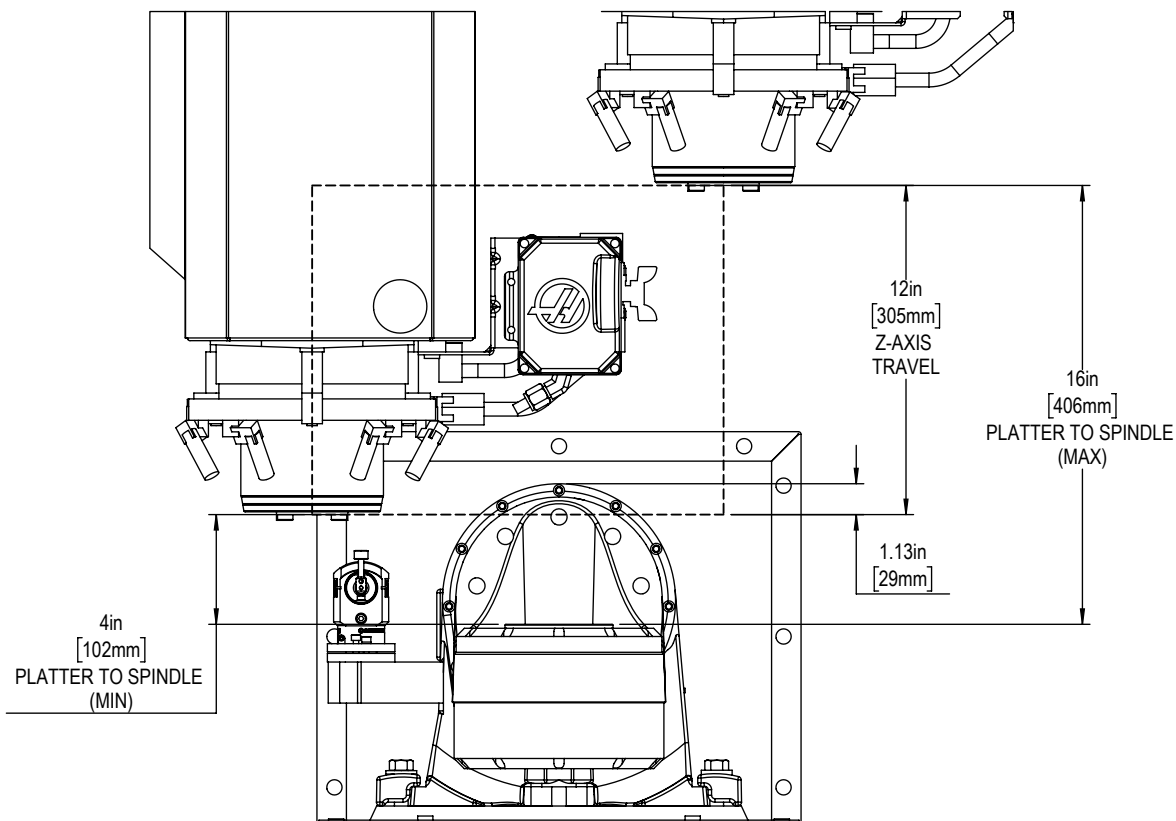




X&Y-Axis Travel and Clearance

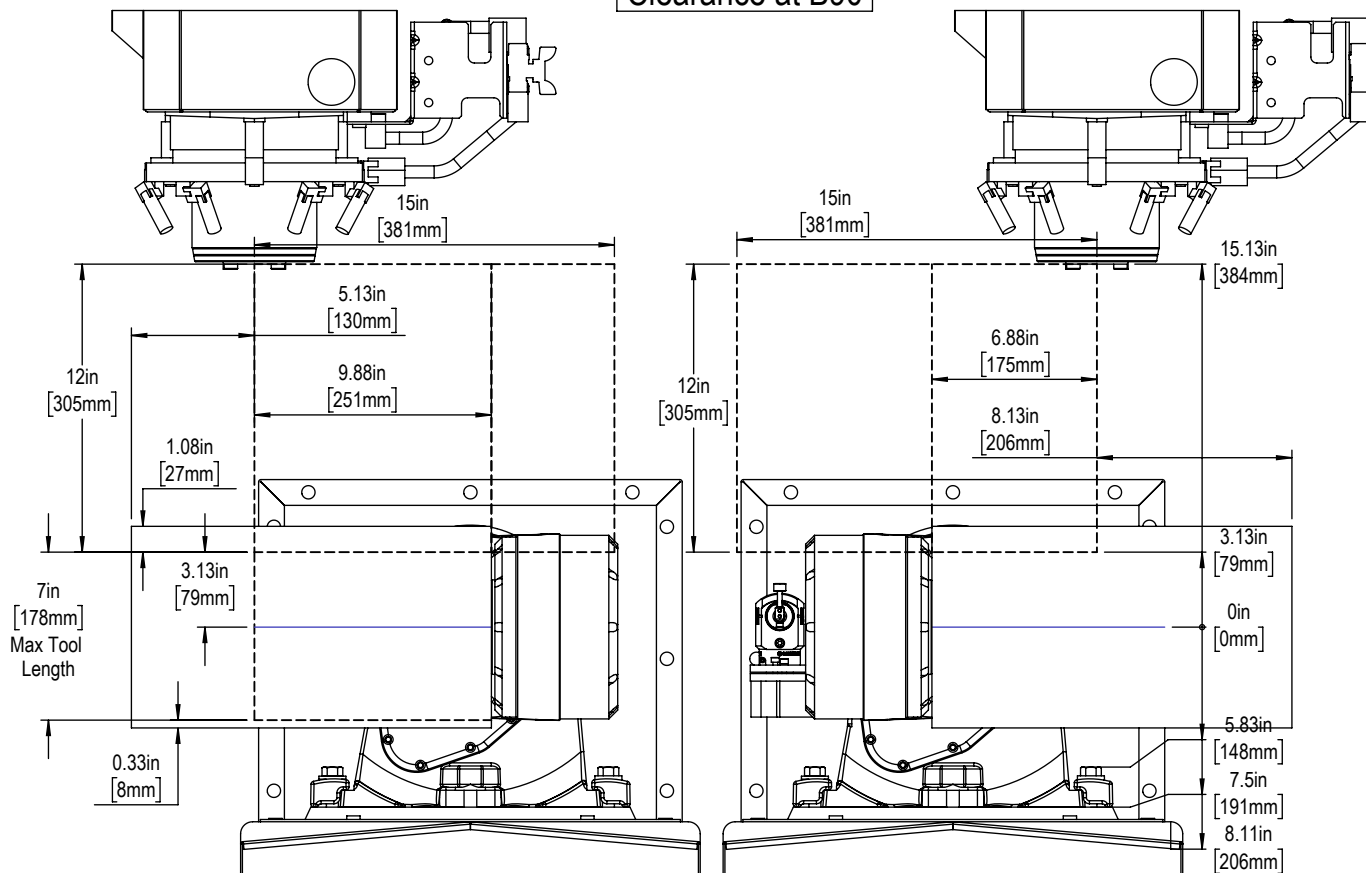


Z-Axis Travel and Clearance

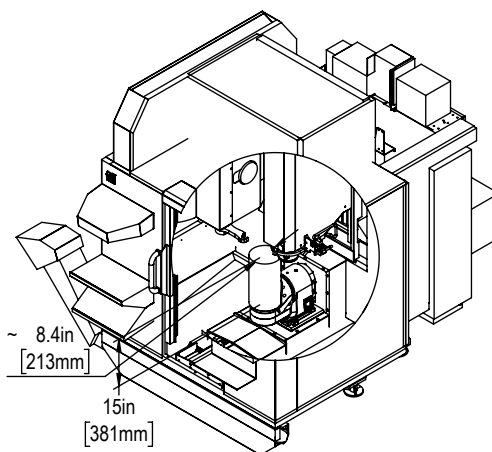
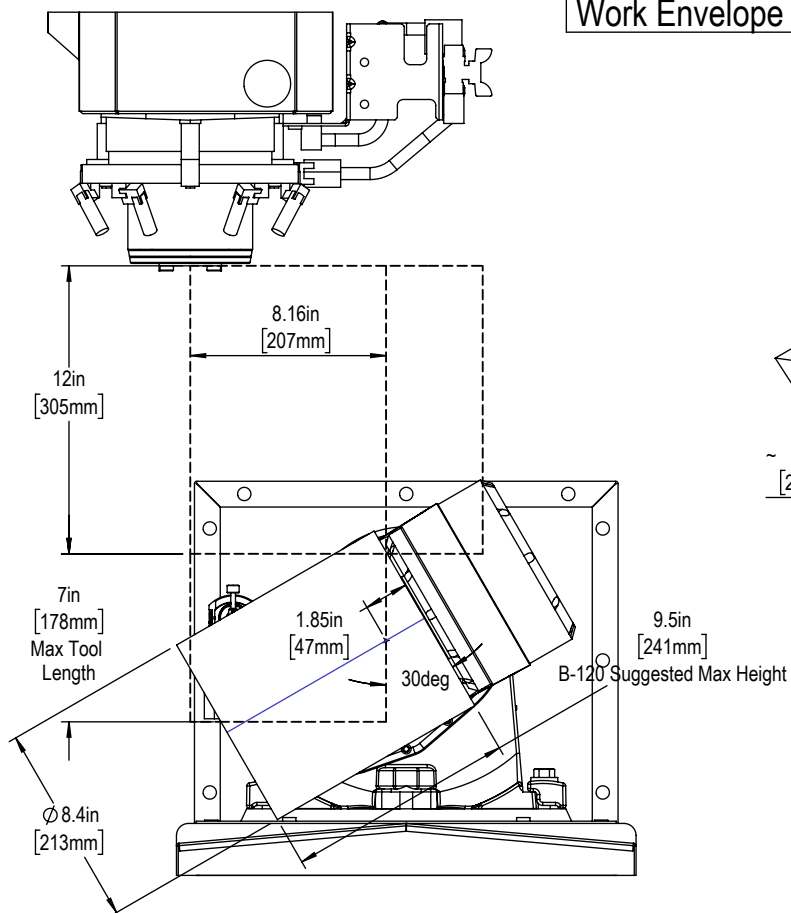




Clearance at B90



Work Envelope



NOTE:
 Tool Length + Workpiece Height
 May not exceed 15in [381mm]
 For more information on max part
 size and weight during 3+2
 indexing and 5-axis machining
 please see TRT100 specs
 and MLD.



Table

For platter information
see TRT100 MLD

Tool Changer

