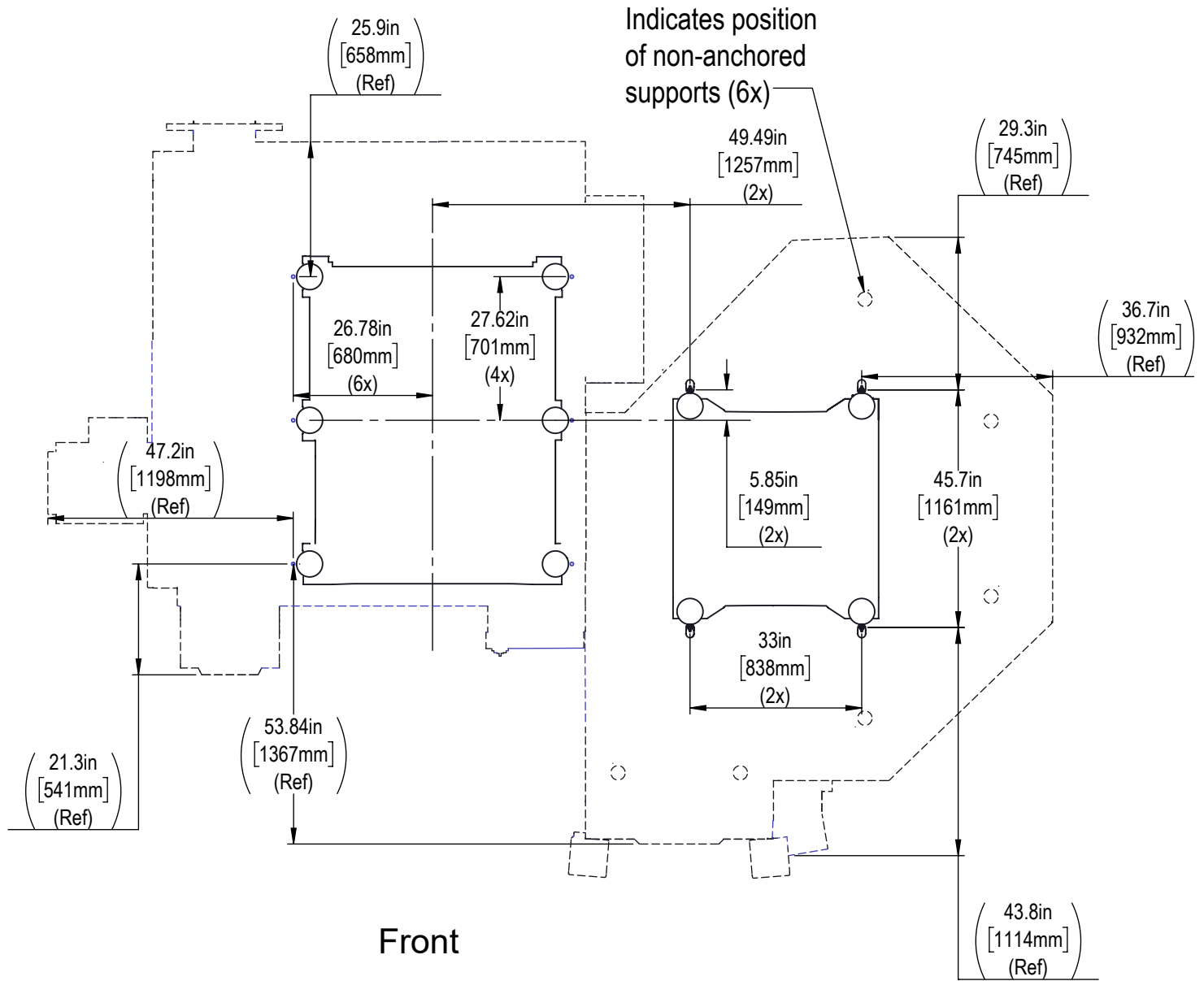


Please see the UMC-500 Layout Drawing for additional measurements and specifications of the machine



# PALLET DETAIL

Pallet surface comes blank, without mounting features.

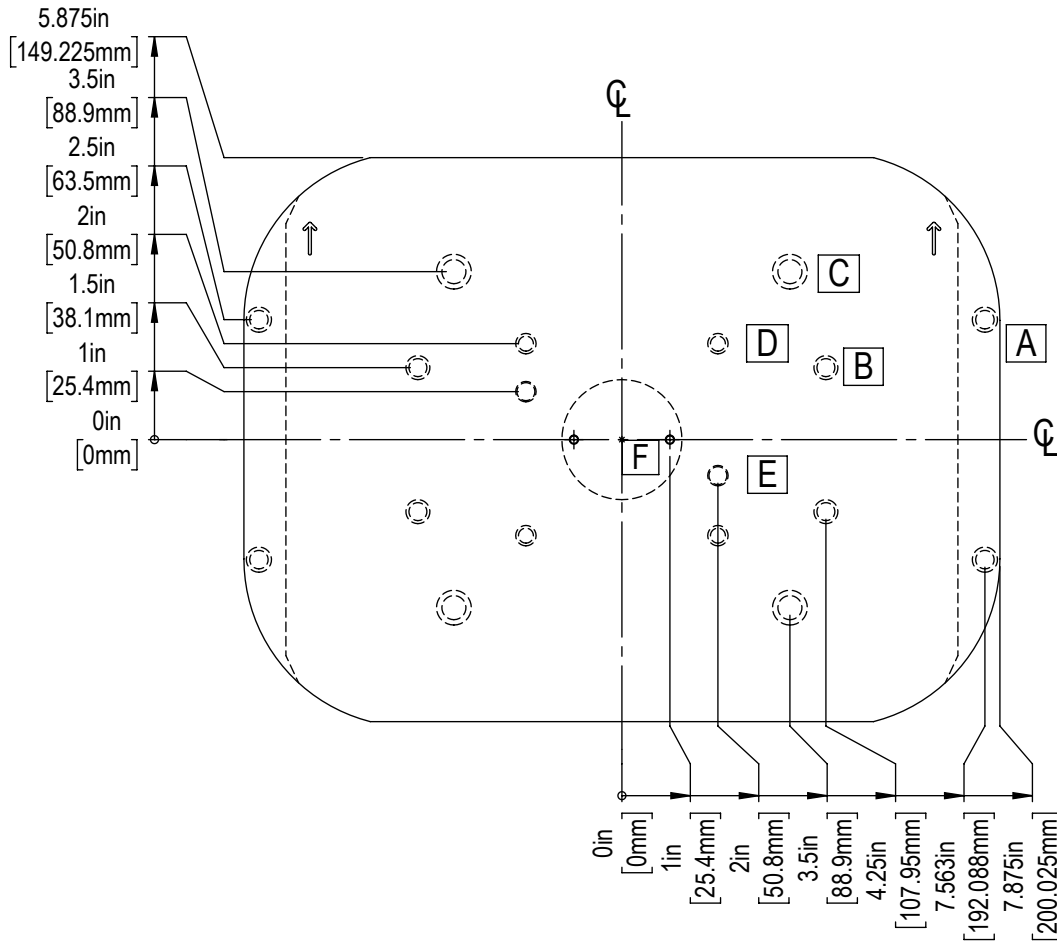
Holes are mirrored about  $\varnothing$  except Hole E.

Drill and tap custom holes to suit your application with the following considerations

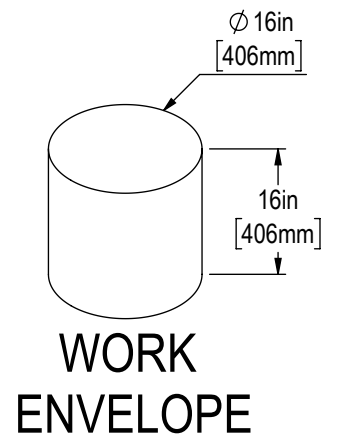
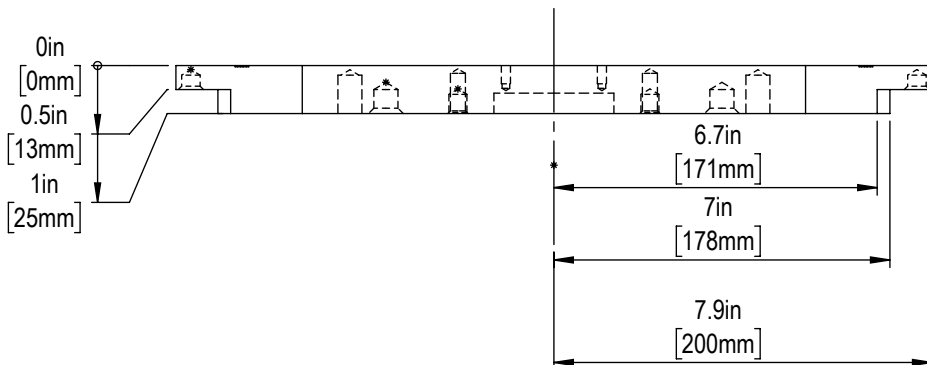
Failure to follow these guidelines may result in interference with locating

or retention features on the bottom of the pallet rendering it

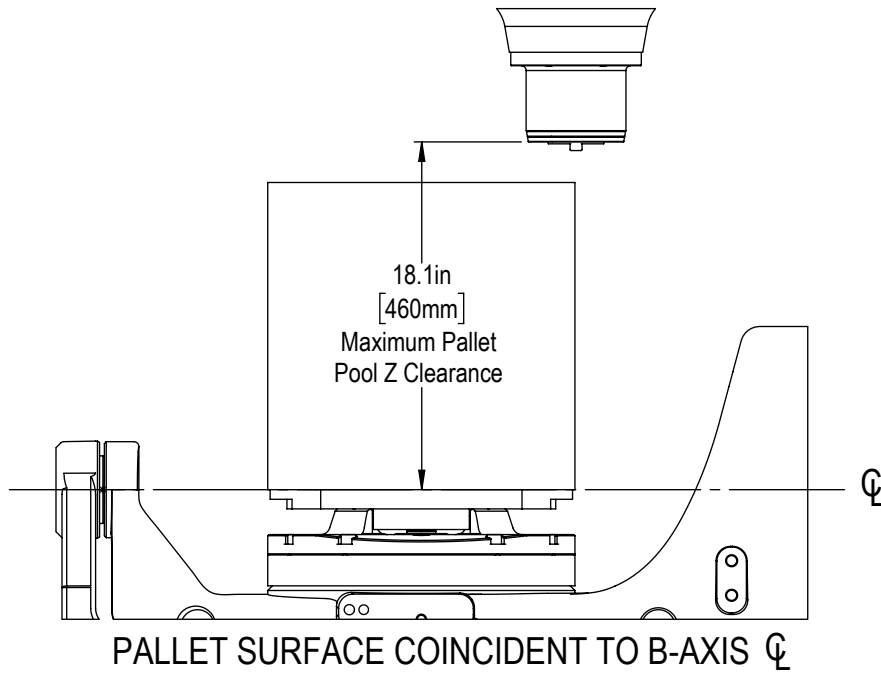
unusable, which is not covered under warranty



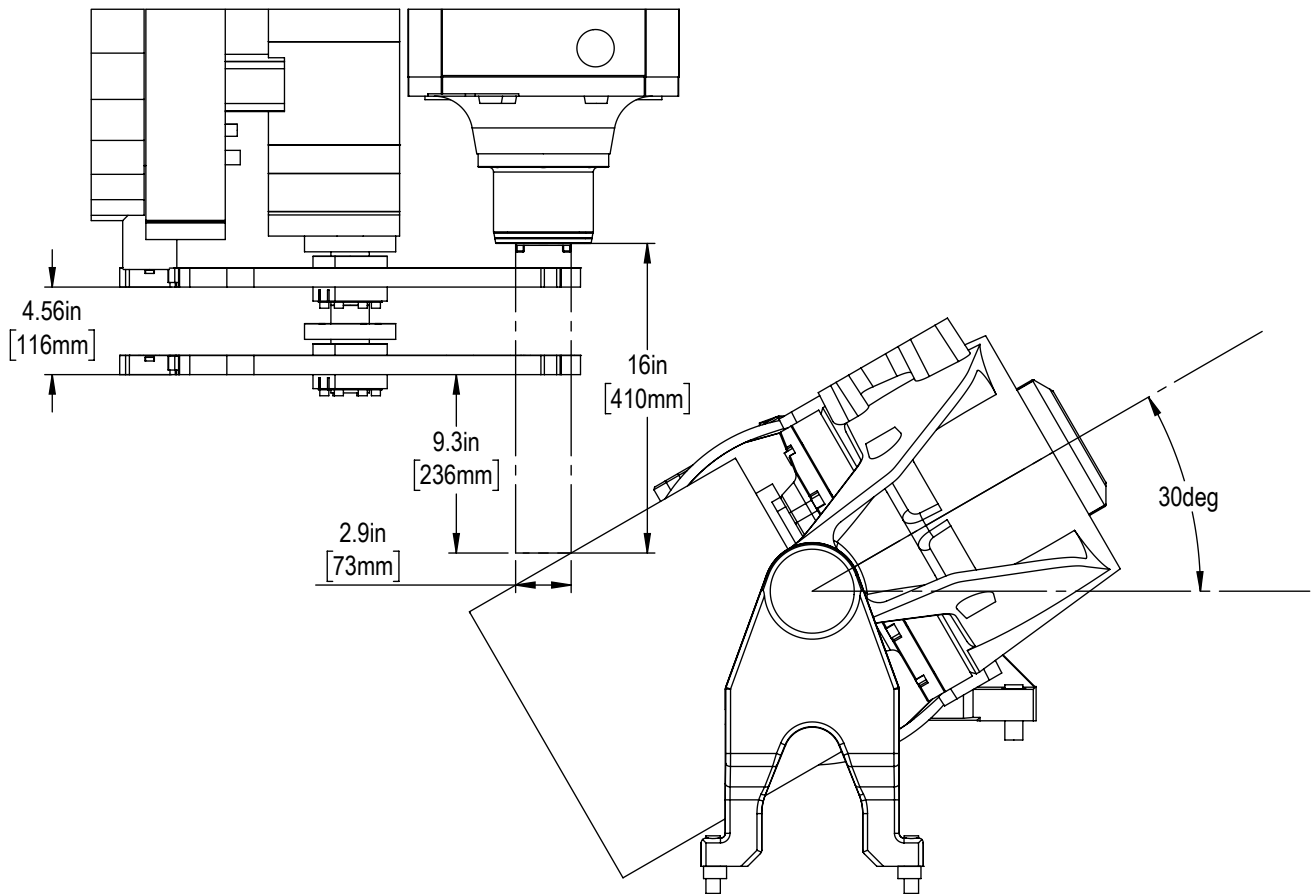
TAG	HOLE $\varnothing$	MAX $\nabla$
A	0.525in [13.33mm]	0
B	0.5in [12.7mm]	0
C	0.725in [18.42mm]	0.25in [6.35mm]
D	0.425in [10.8mm]	0
E	0.425in [10.8mm]	0.25in [6.35mm]
F	2.5in [63.5mm]	0.375in [9.53mm]



CENTER OF ROTATION

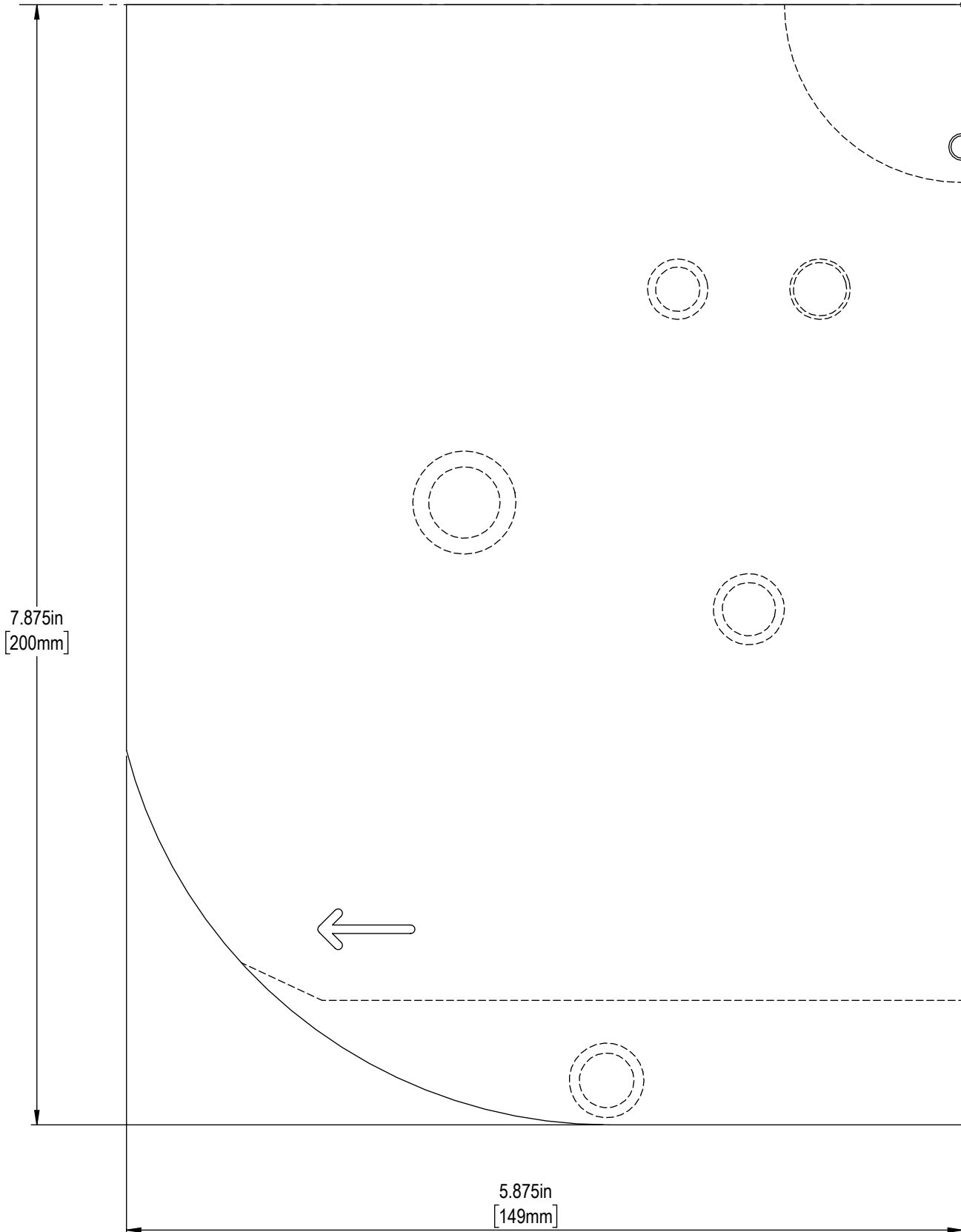
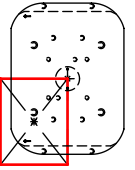


TOOL CHANGES AND MAX TOOL DIMENSIONS AT MAX B-AXIS TRAVEL





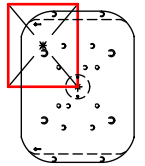
PRINTABLE 1:1 SCALE REFERENCE



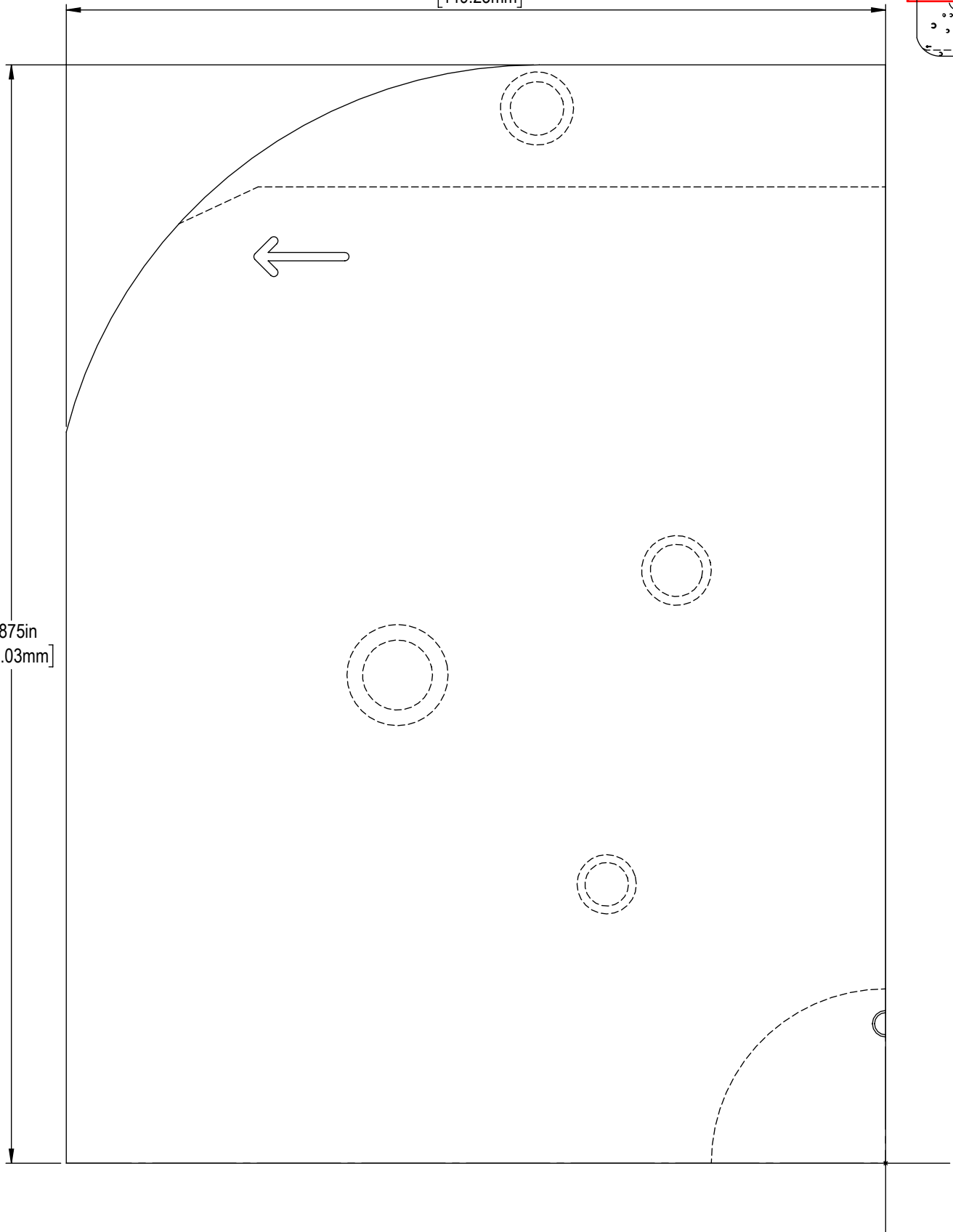


PRINTABLE 1:1 SCALE REFERENCE

5.875in  
[149.23mm]



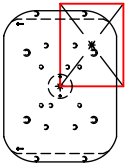
7.875in  
[200.03mm]





PRINTABLE 1:1 SCALE REFERENCE

5.875in  
[149.23mm]



7.875in  
[200.03mm]



PRINTABLE 1:1 SCALE REFERENCE

