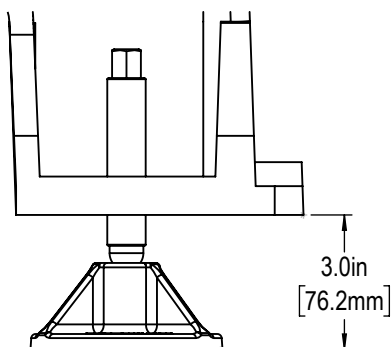
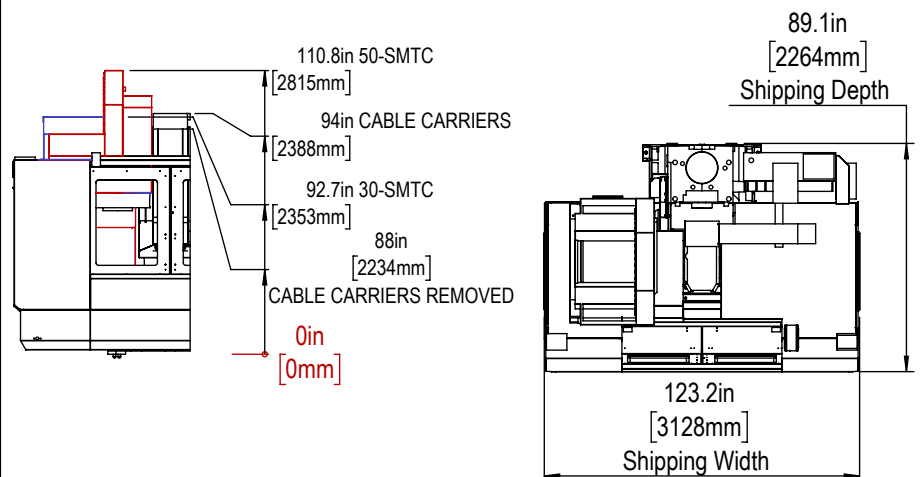


Leveling Pad Height



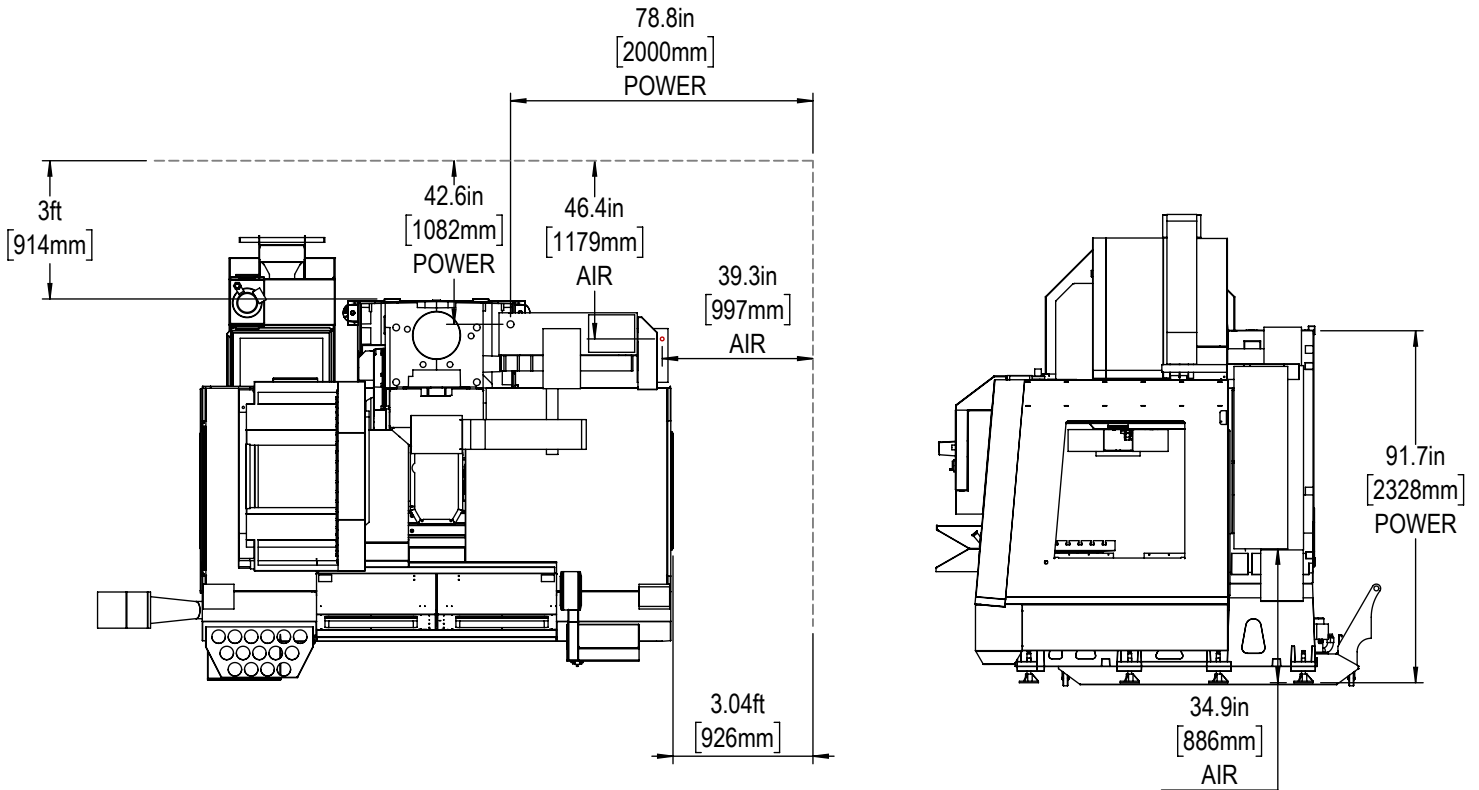
Shipping Dimensions



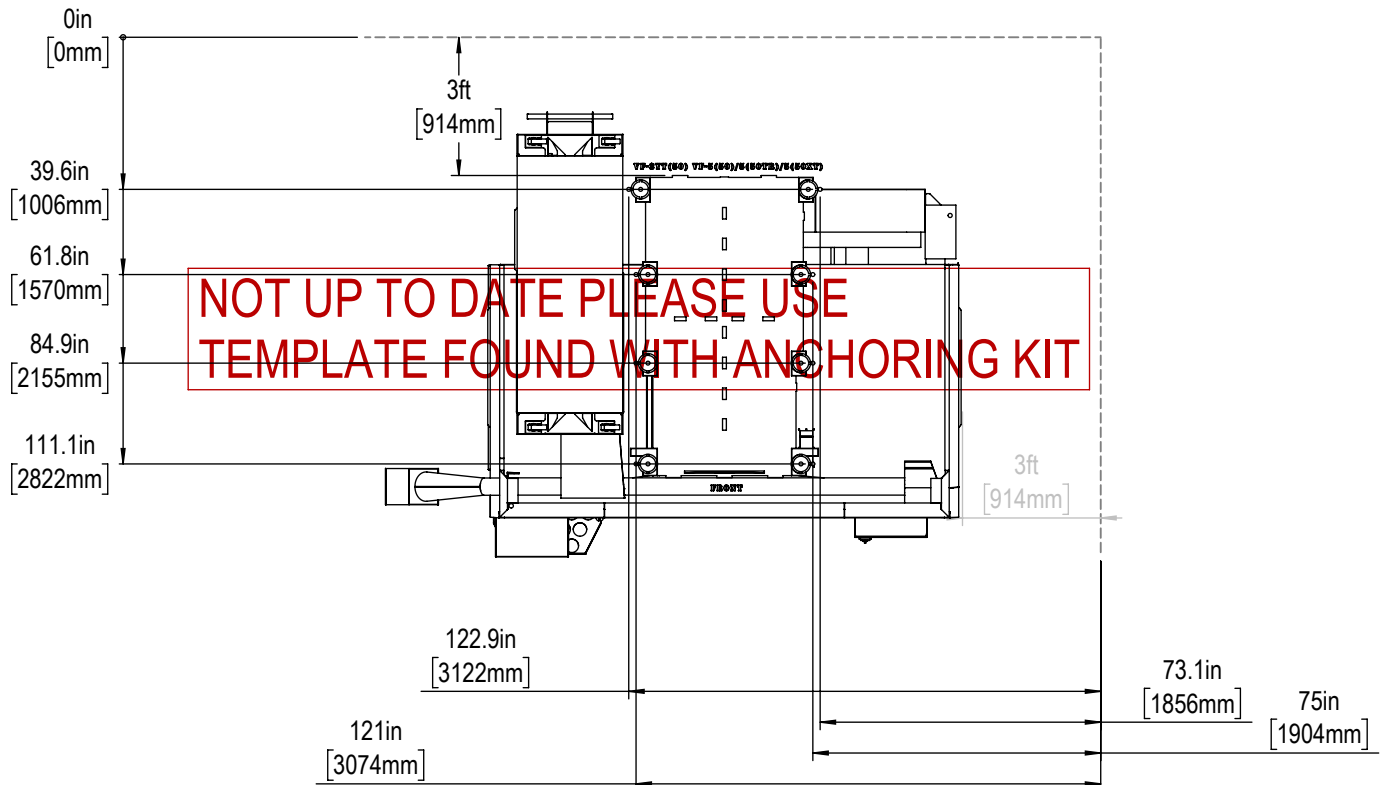
*All Height Dimensions Based on Suggested Leveling Pad Height



Air & Power

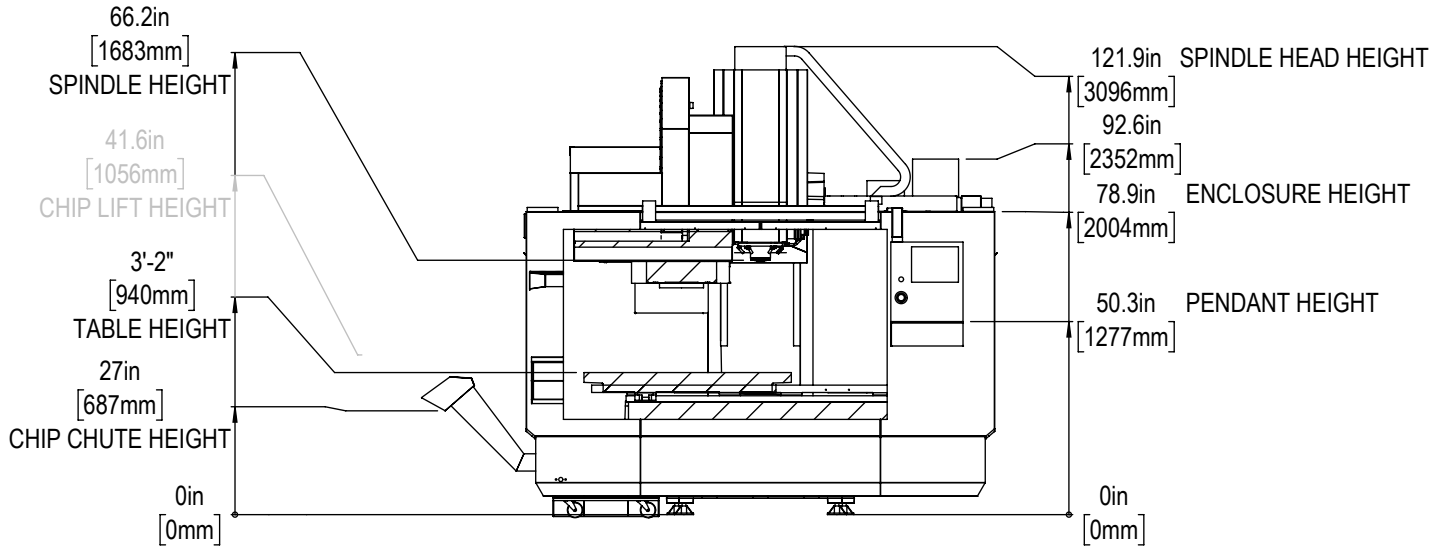


Anchor Pattern

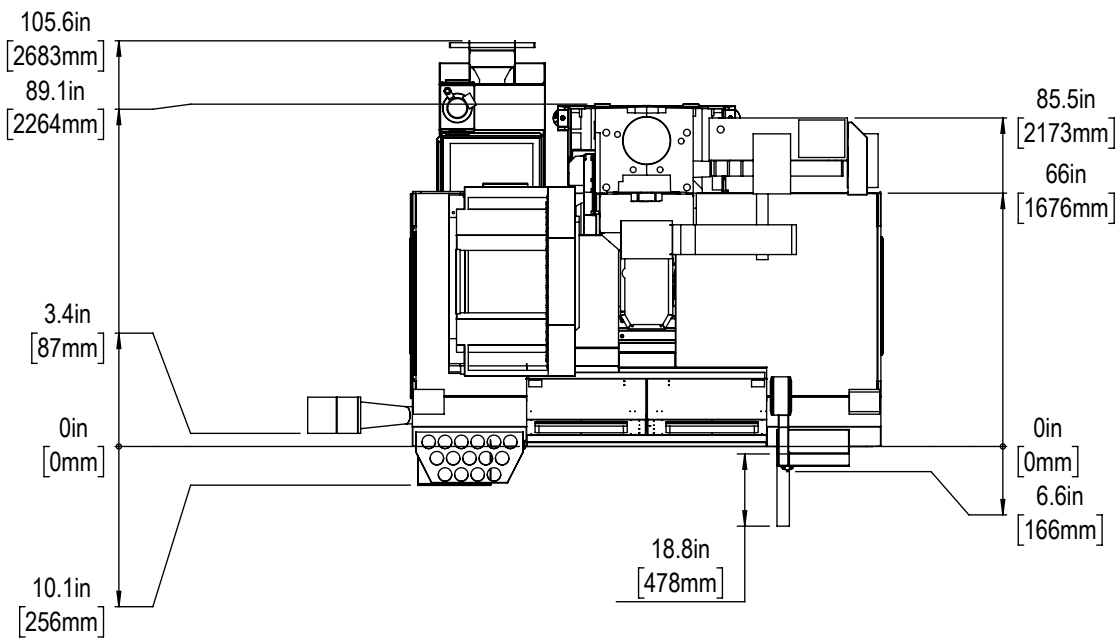




Height Breakdown



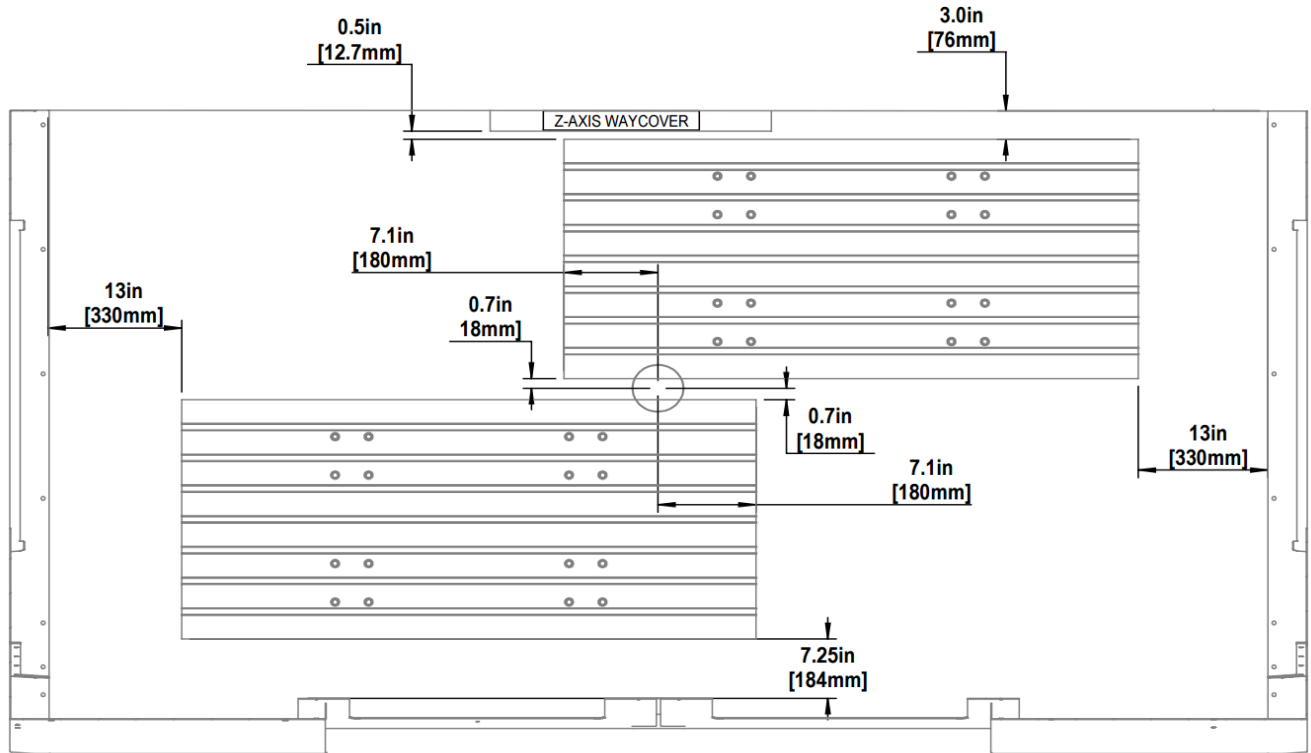
Width Breakdown



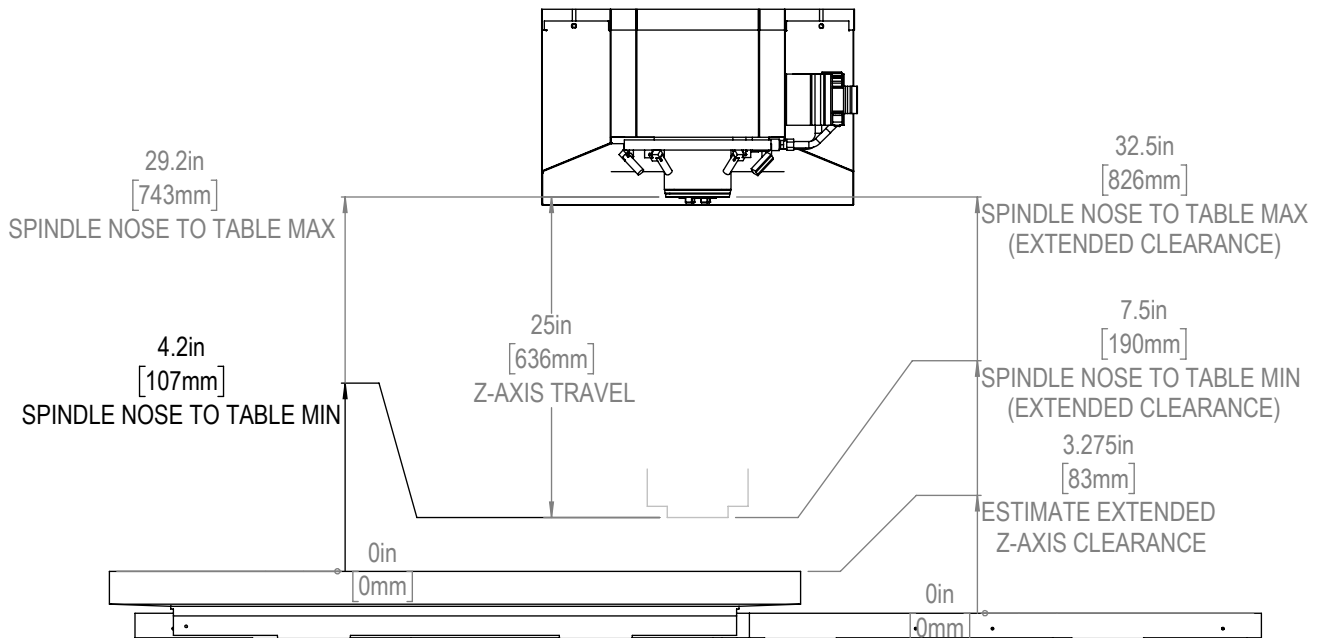
Maintain 3 feet [915mm] clearance to the nearest obstruction around all sides of machine perimeter for maintenance access



X&Y-Axis Travel

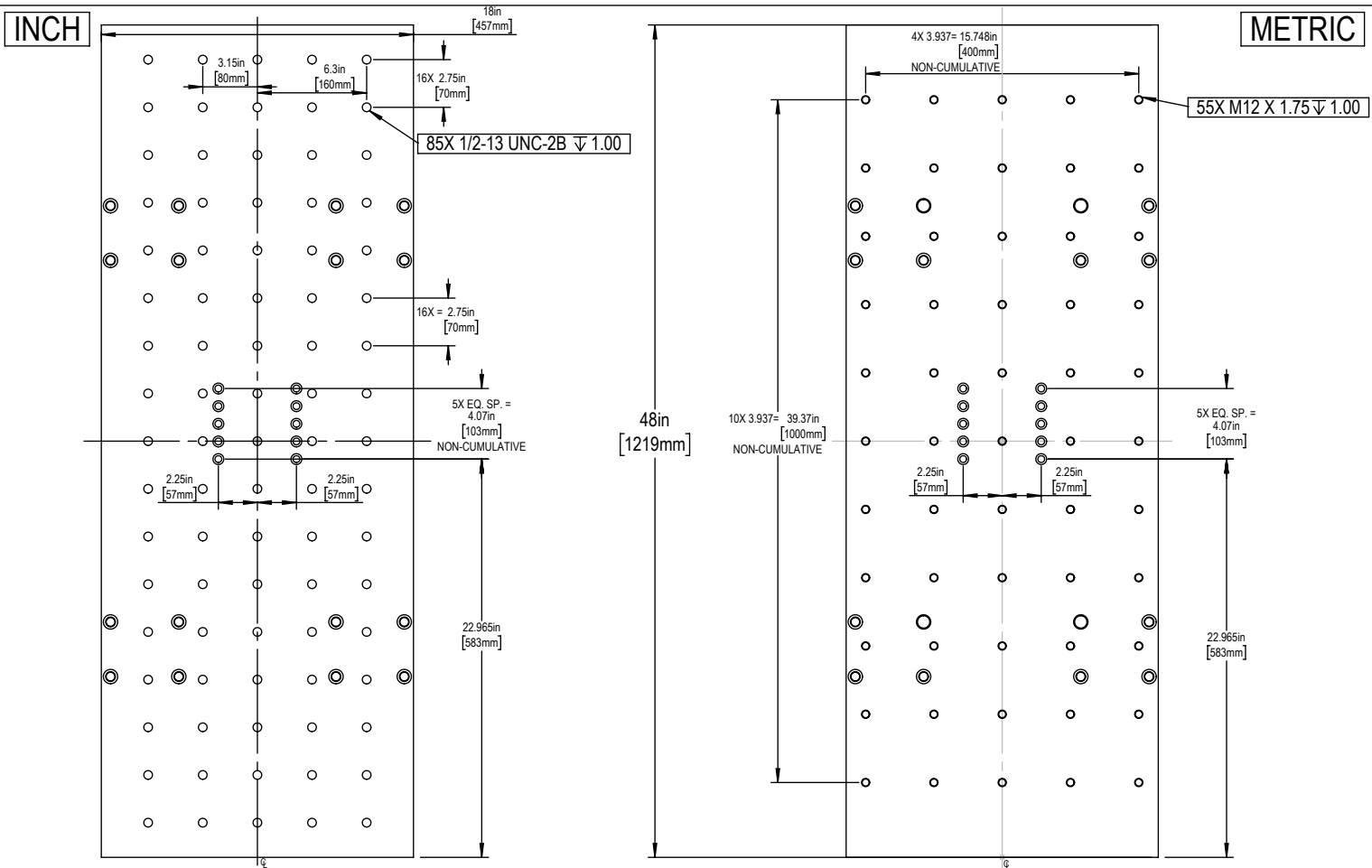
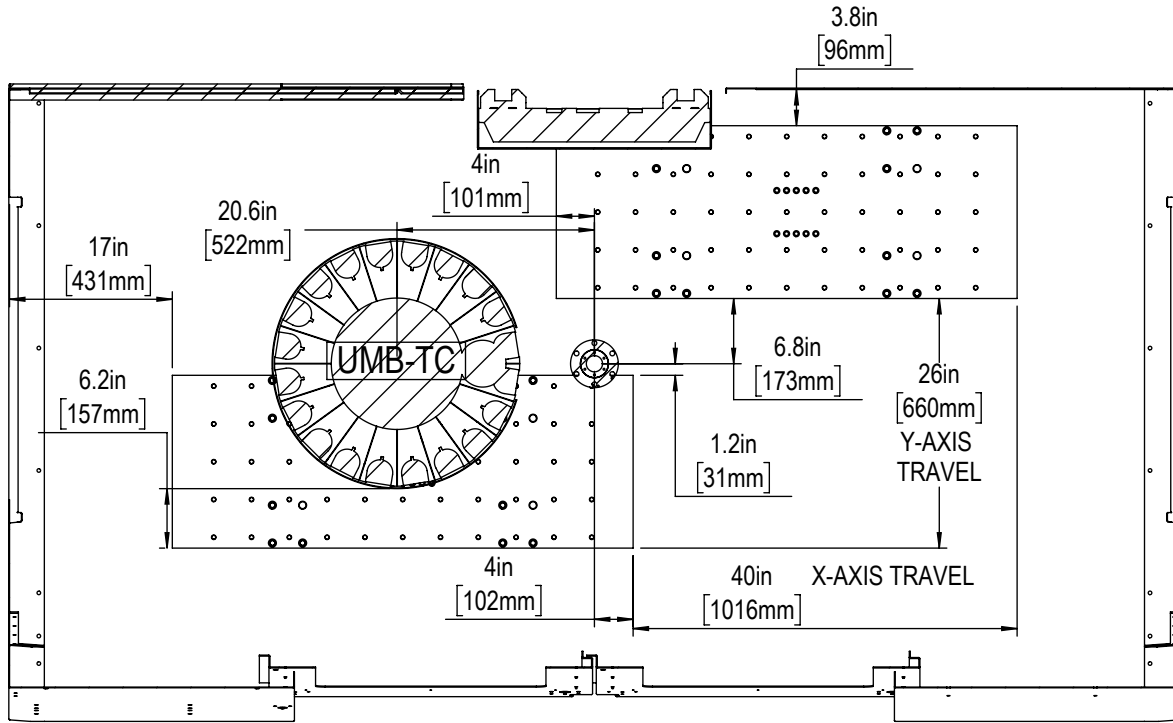


Z-Axis Travel





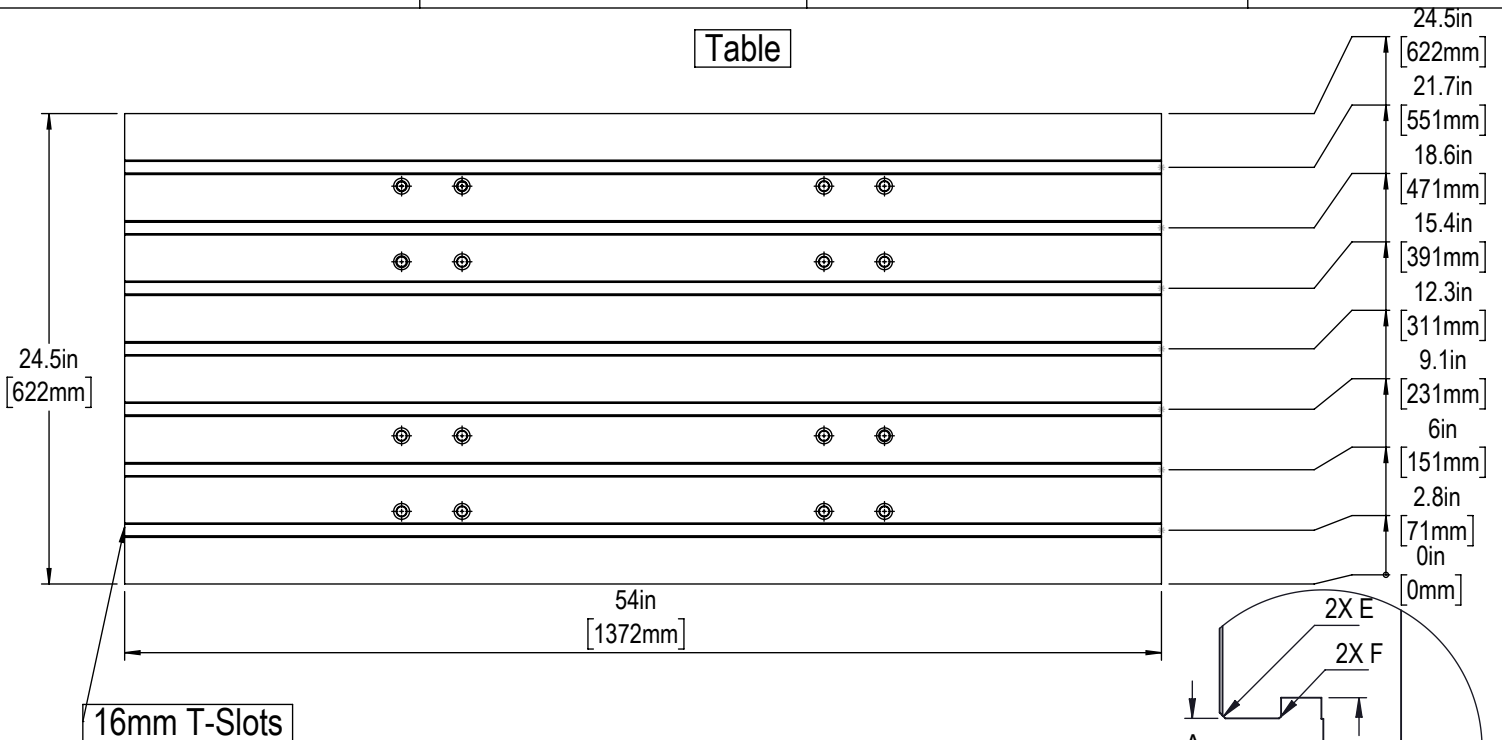
X&Y-Axis Travel (Extended Z-Axis Clearances)



All dimensions based on stackup of sheetmetal, subject to variation of 1/2" (13mm) Due to continual product improvements, dimensions are subject to change without notice



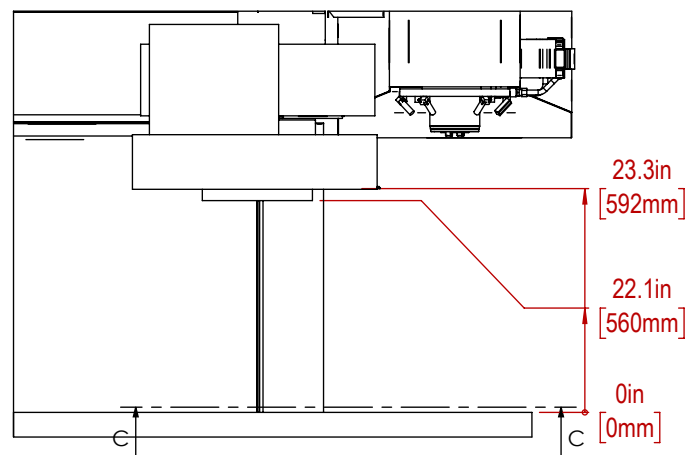
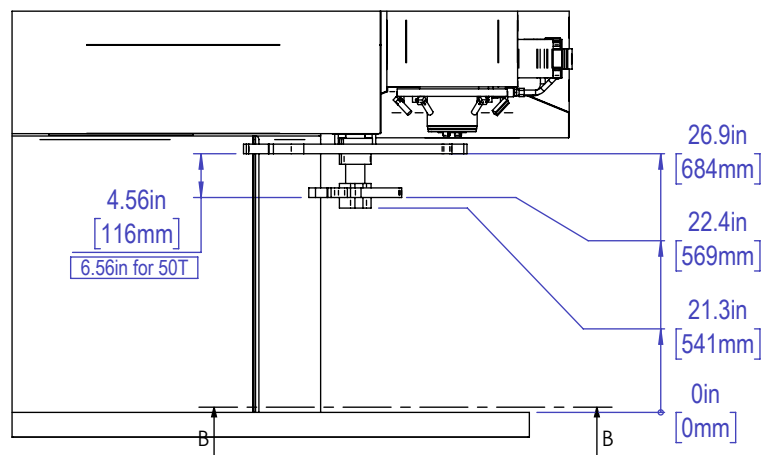
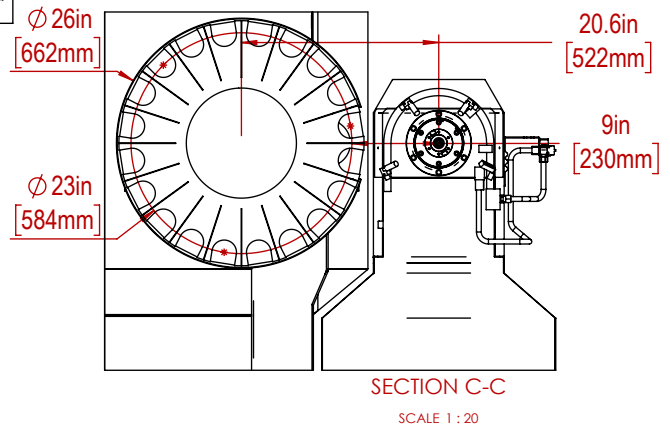
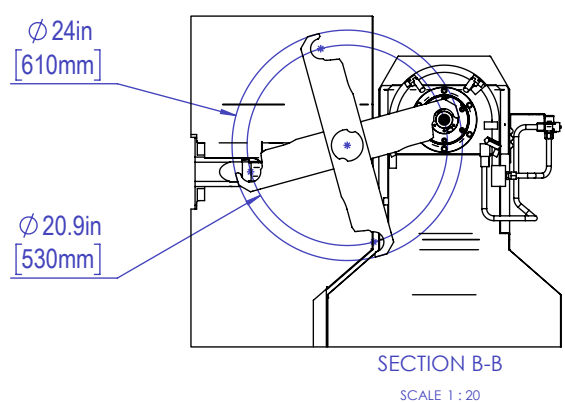
Table



Slot Size	A	B	C	D	E	F
12mm	$0.438 \begin{smallmatrix} +.002 \\ -.000 \end{smallmatrix}$	0.76 ± 0.02	0.310 ± 0.010	0.318 ± 0.010	$0.03 \times 45^\circ$	$0.020 \times 45^\circ$
16mm	0.628 ± 0.002	1.06 ± 0.02	0.640 ± 0.010	0.420 ± 0.010	$0.06 \times 45^\circ$	$0.020 \times 45^\circ$

T-Slot Dimensions in inches

Tool Changer



All dimensions based on stackup of sheetmetal, subject to variation of 1/2" (13mm) Due to continual product improvements, dimensions are subject to change without notice