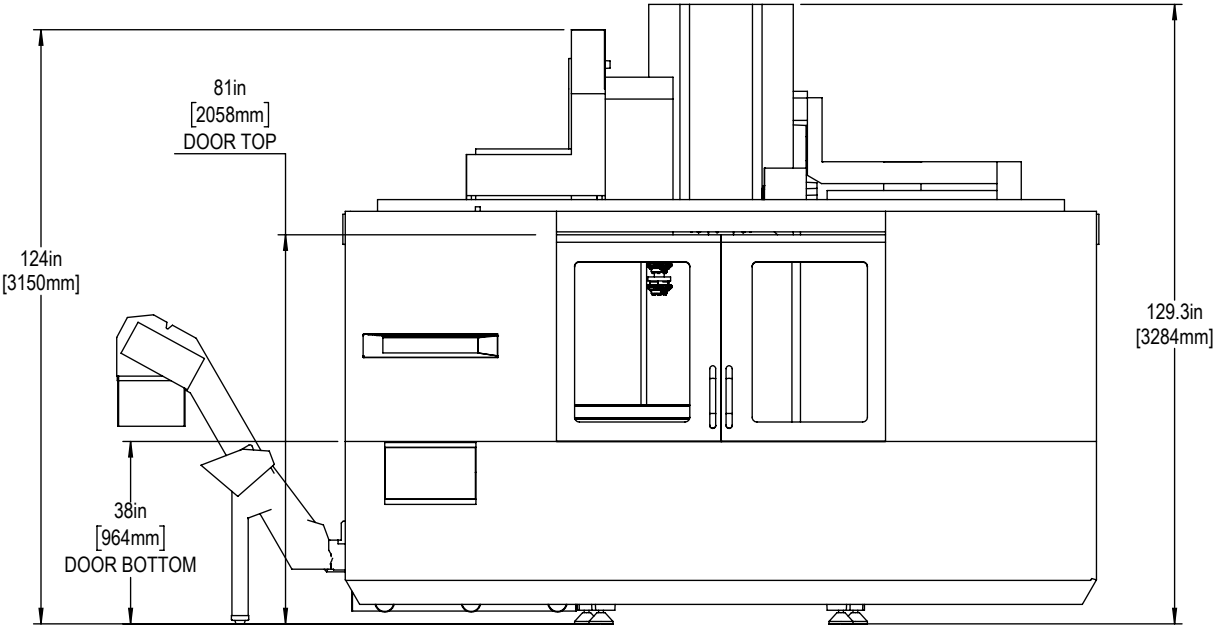


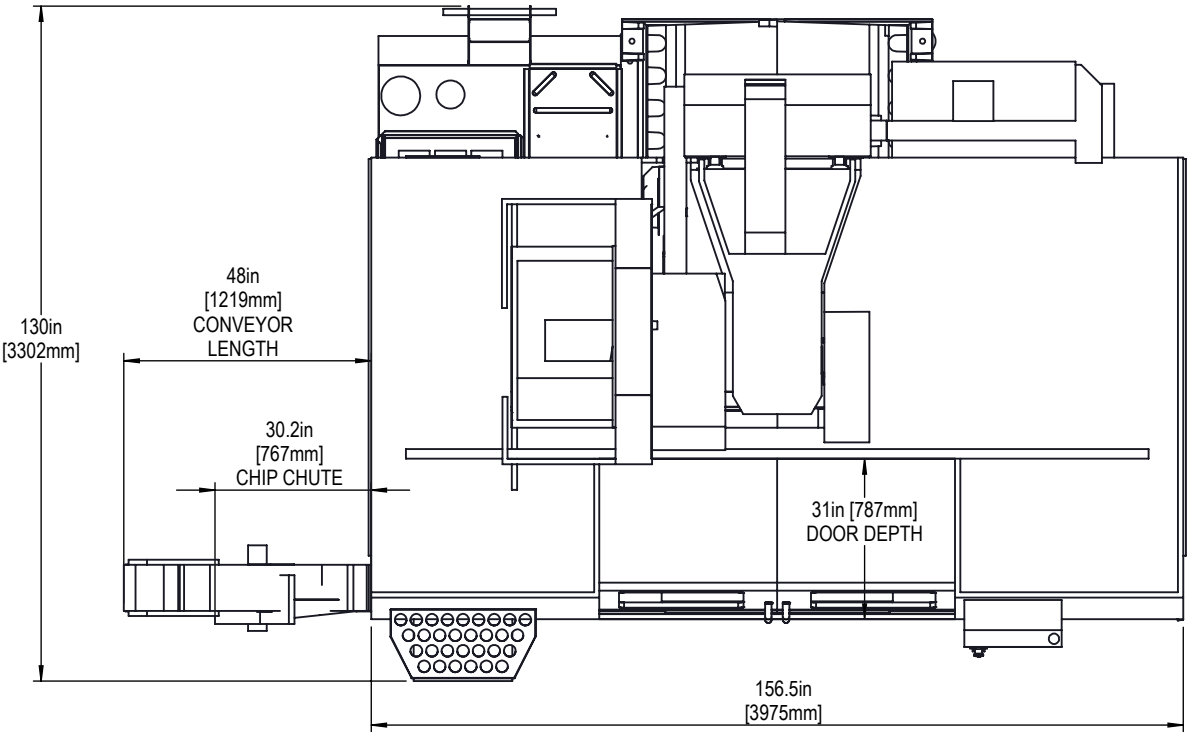


FRONT VIEW - OPERATIONAL HEIGHT



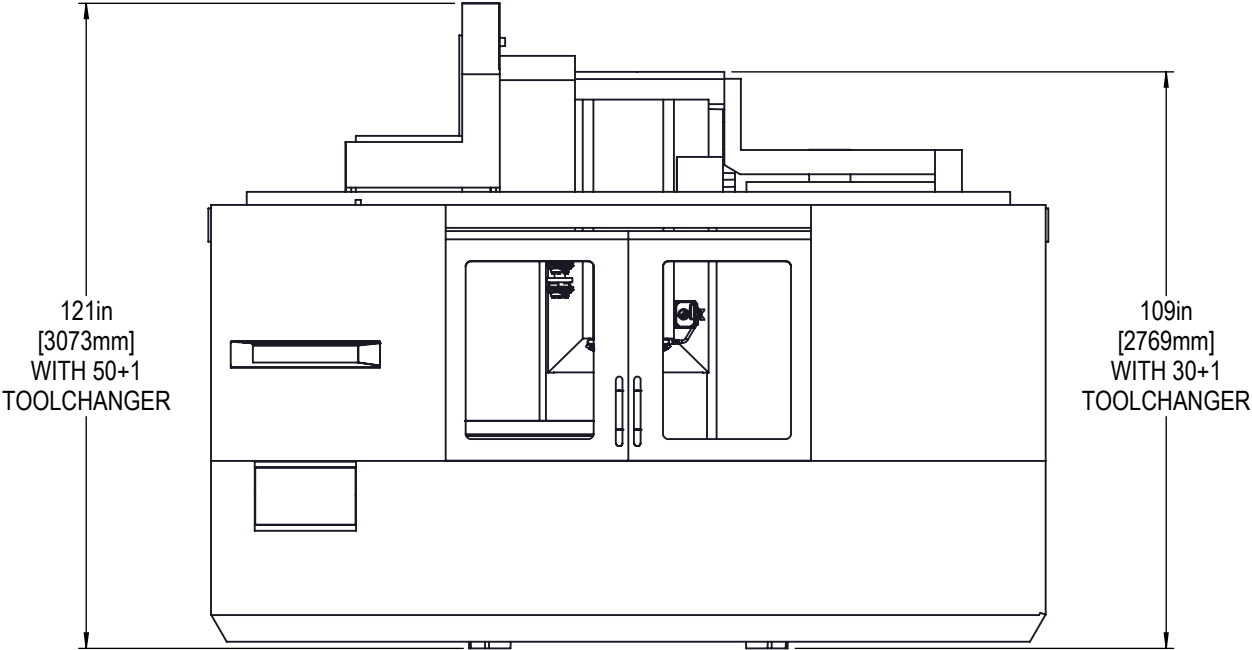
REFER TO THE INSTALLATION INSTRUCTIONS FOR STEP BY STEP GUIDANCE

TOP VIEW - OPERATIONAL DEPTH AND WIDTH





FRONT VIEW



DIMENSION SHOWN IS FROM THE BOTTOM OF THE BASE TO THE TOP OF THE TOOLCHANGER COVER

LEVELING SCREWS AND PADS ARE REMOVED TO REDUCE HEIGHT

TOP VIEW

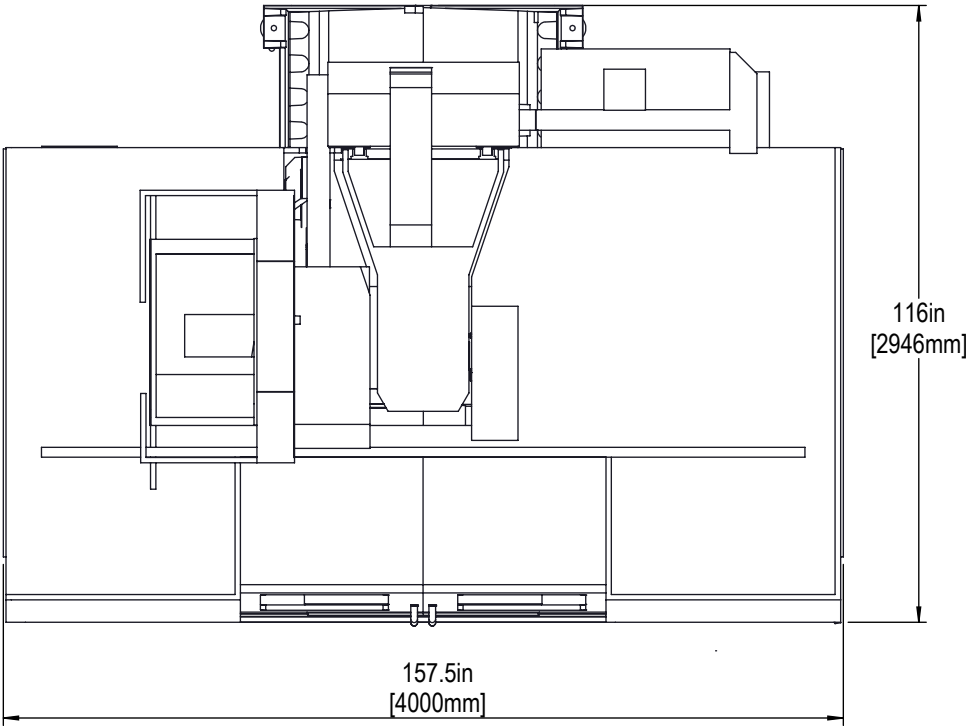
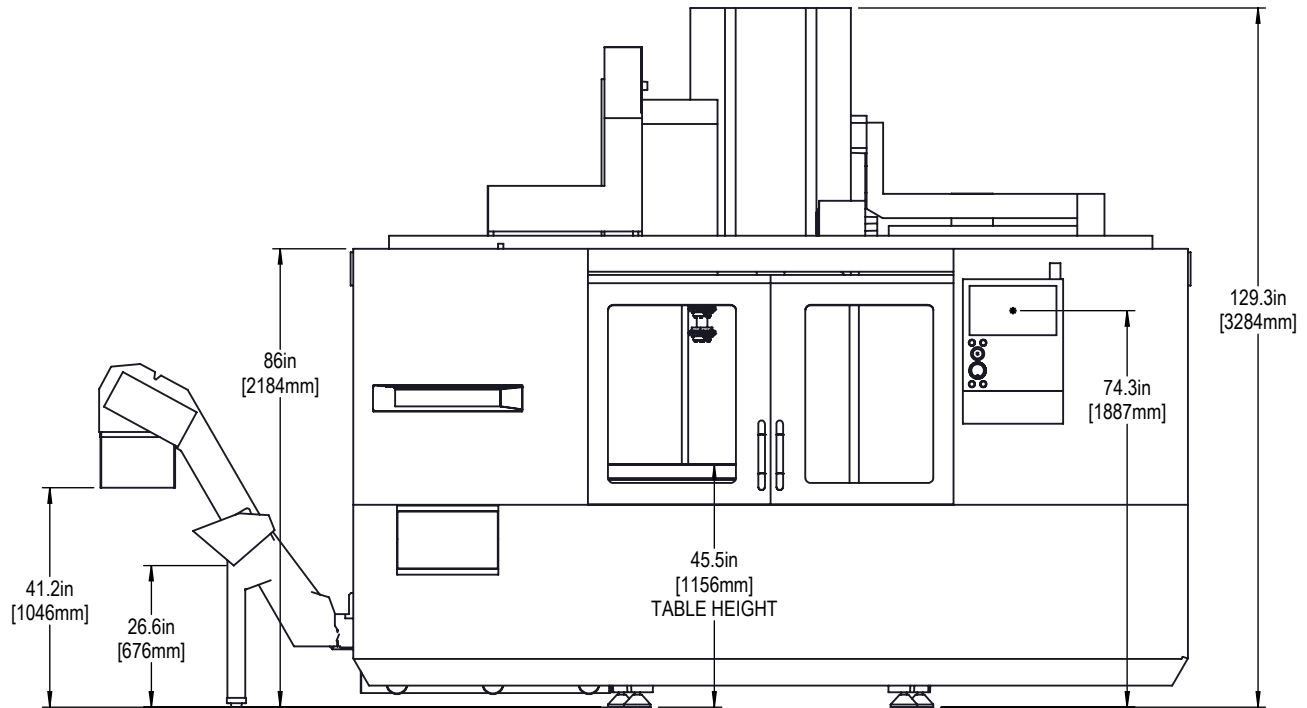
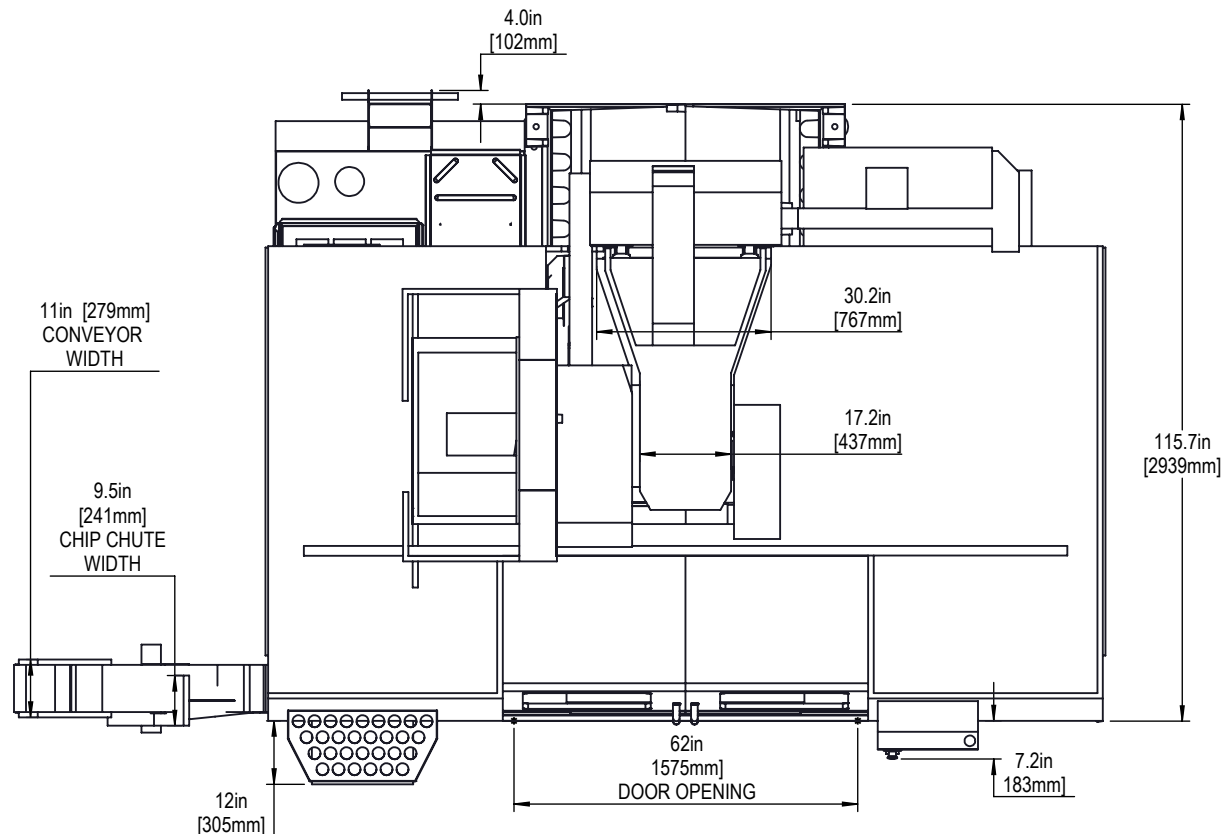


IMAGE SHOWN IS REPRESENTATIVE OF THE WAY THE MACHINE IS SHIPPED ON THE PALLET

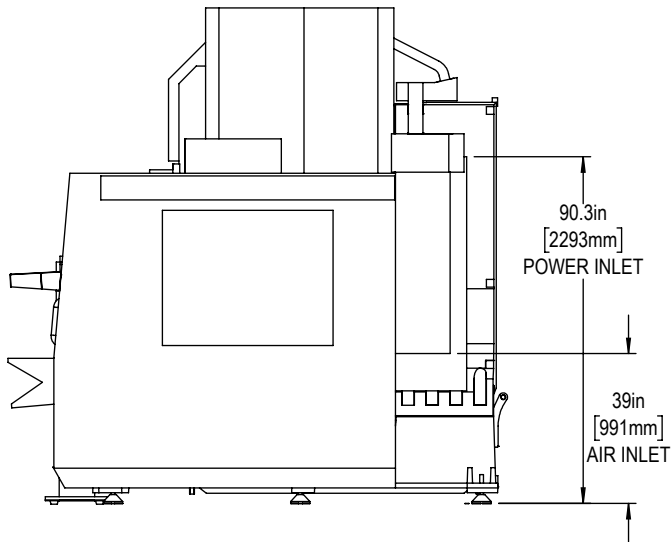
## HEIGHT BREAKDOWNS



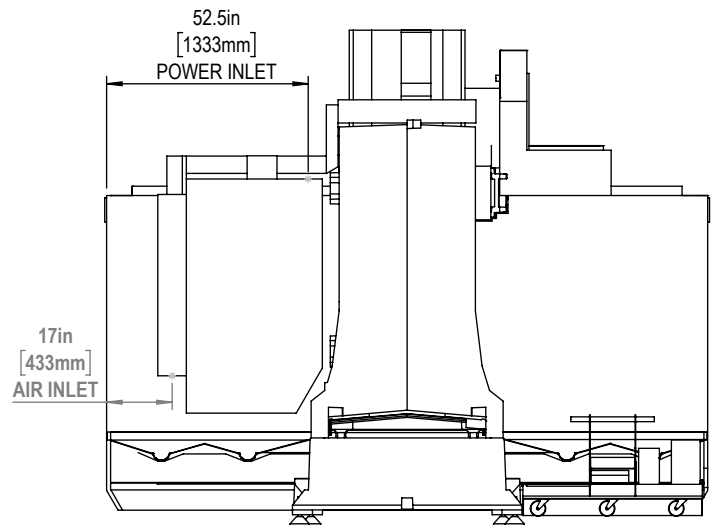
## DEPTH AND WIDTH BREAKDOWNS



RIGHT SIDE VIEW



BACK VIEW



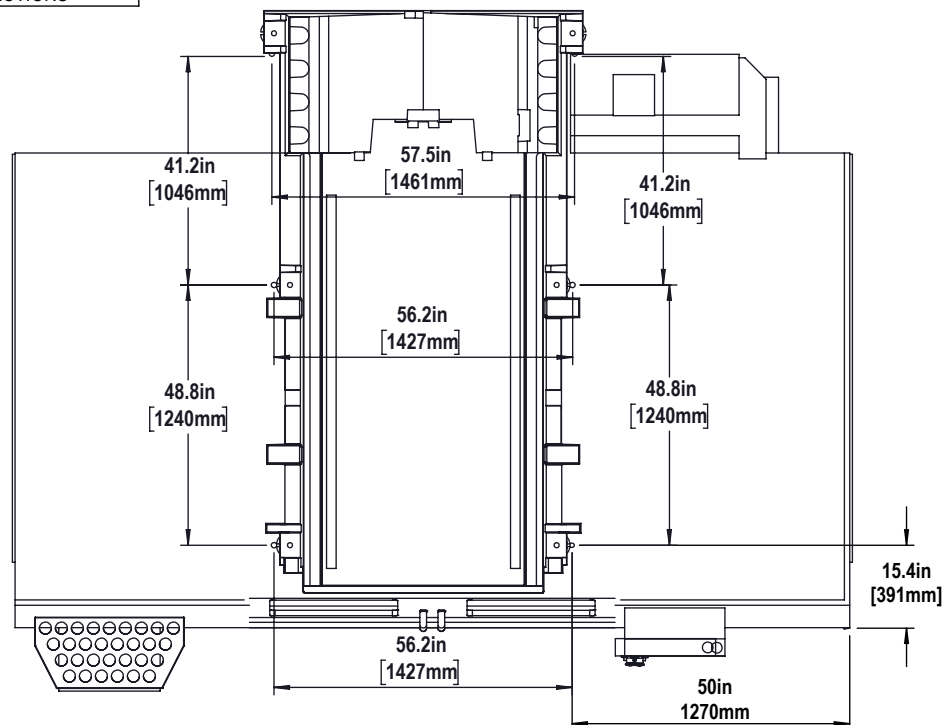
A 36in [914mm] CLEARANCE IS REQUIRED FOR ELECTRICAL CABINET

REFER TO MACHINE INSTALLATION INSTRUCTIONS FOR DETAILS

NOTE: MACHINE BASE MUST BE PLACED ON ONE CONTINUOUS CONCRETE SLAB.

SLAB SHOULD EXTEND 12in [305mm] BEYOND ANCHOR HOLES IN ALL DIRECTIONS

TOP VIEW



ANCHOR HOLE DETAILS:

Ø 0.62in [16mm]

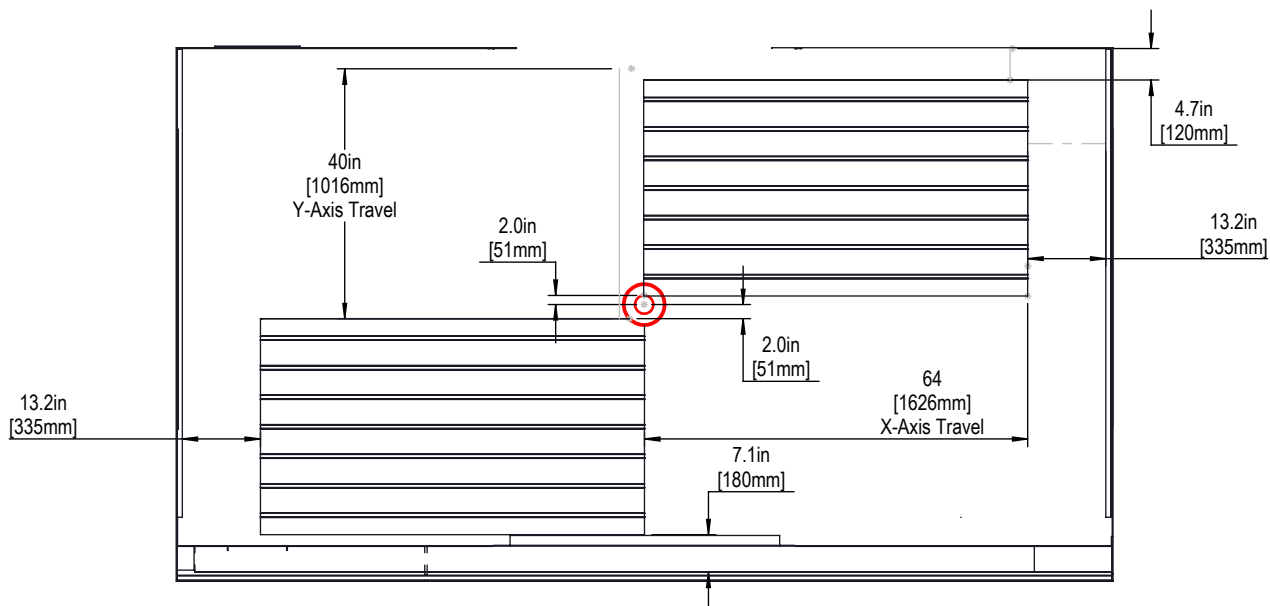
▽ 2in [51mm]

▽ 2.25in [57mm]

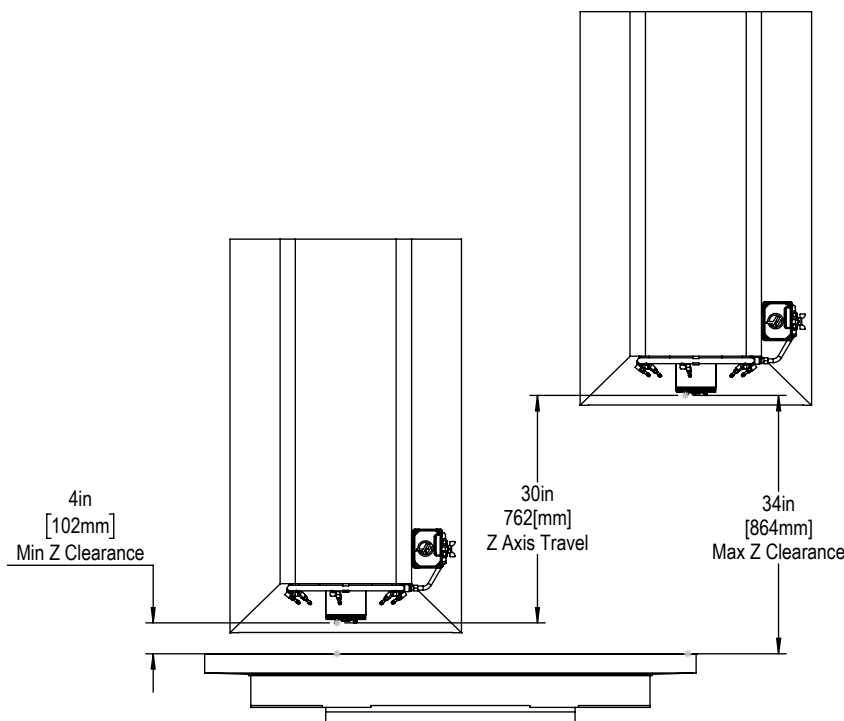
FOR PRECISE DRILLING LOCATIONS PLEASE USE THE TEMPLATE FROM THE MACHINE ANCHORING KIT



X AND Y AXIS TRAVEL



Z AXIS TRAVEL



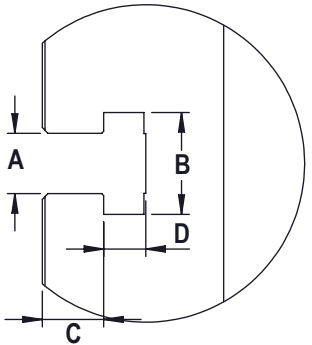
MACHINE TABLE FRONT VIEW



TABLE



Slot Size	A	B	C	D
16mm	0.628in	1.06in	0.64in	0.42in
16mm	16mm	27mm	16mm	10.5mm



TOOL CHANGER

