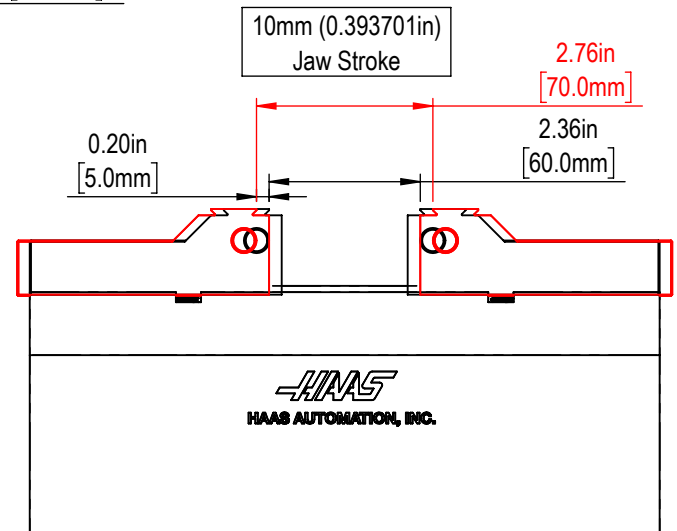
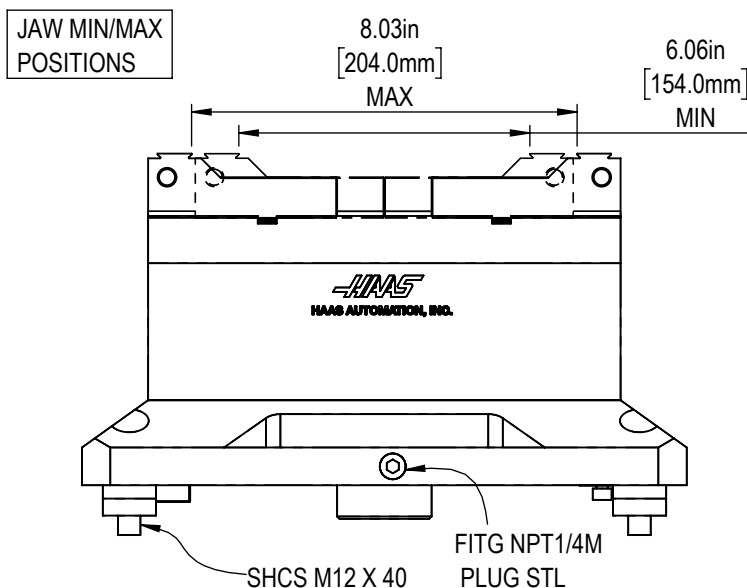
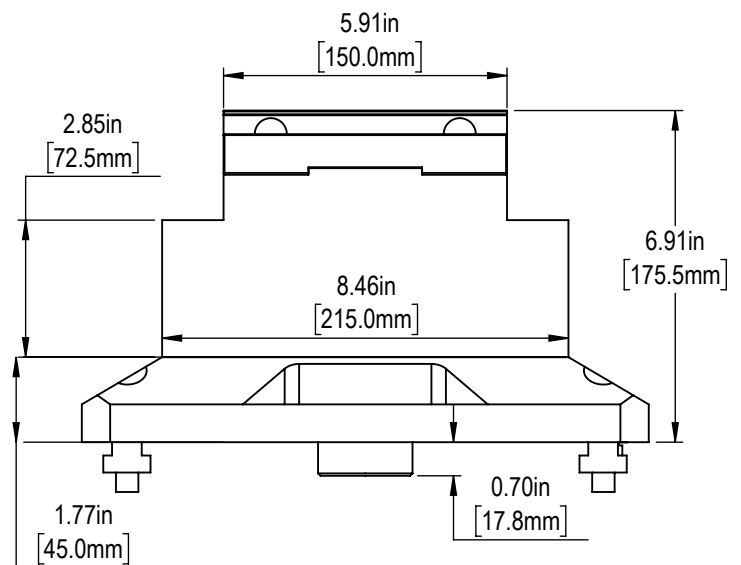
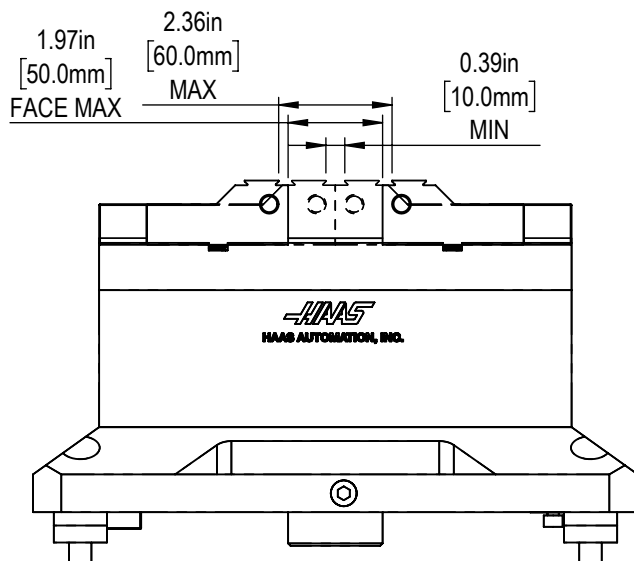
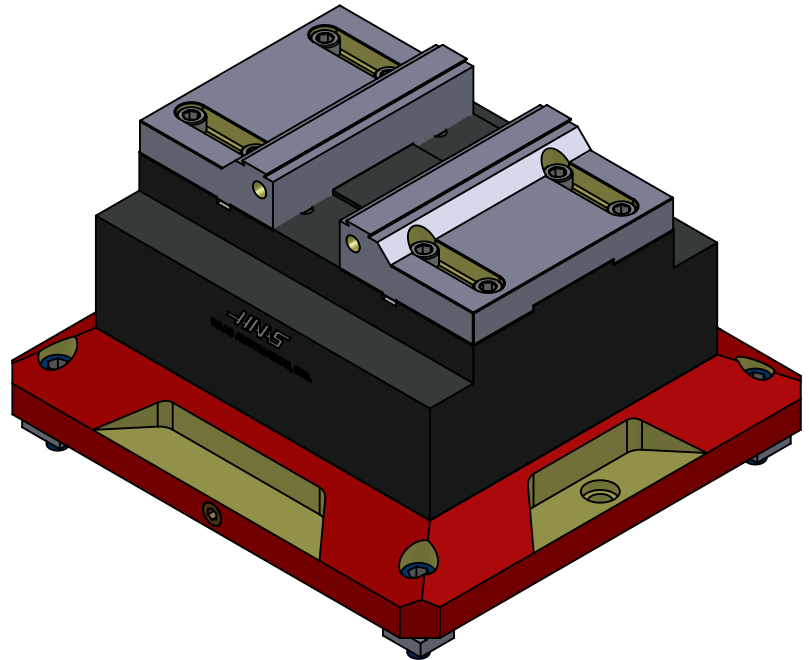
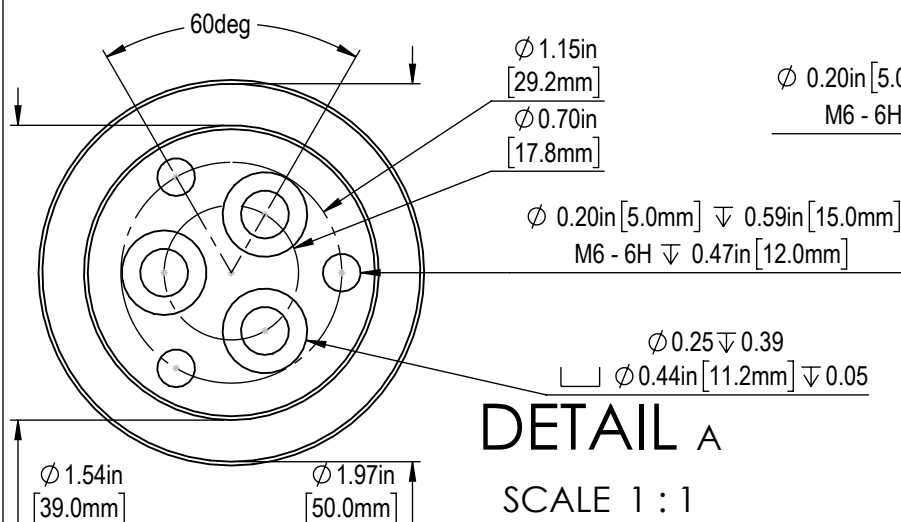
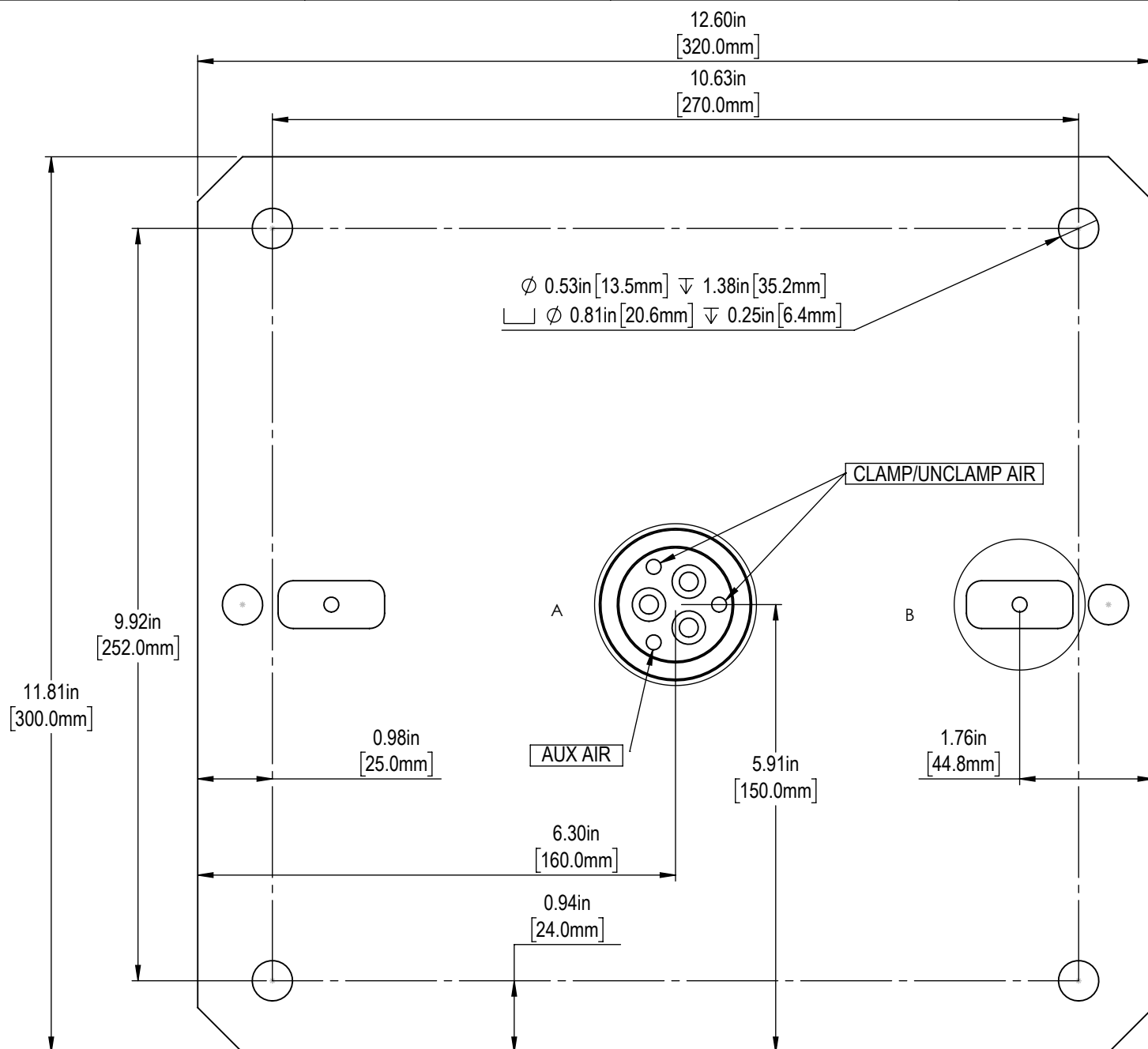


## CLAMPING FORCE:

5600 LBS (24.9KN) AT 100 PSI (6.8 BAR)

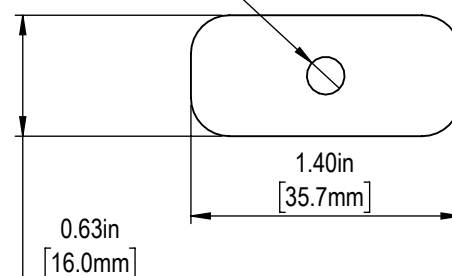
6750 LBS (30KN) AT 140 PSI (9.7 BAR)



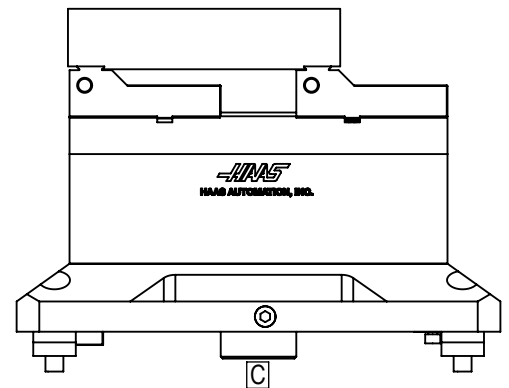
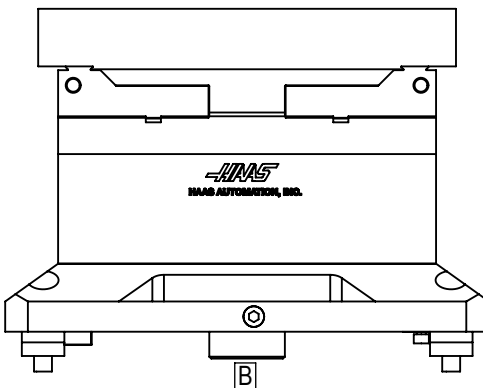
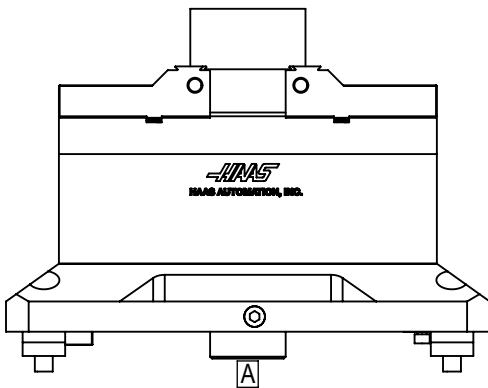
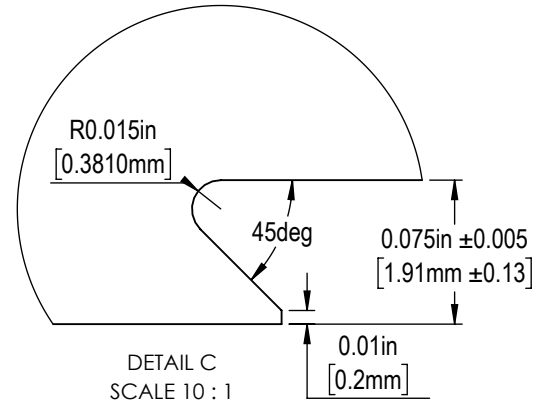
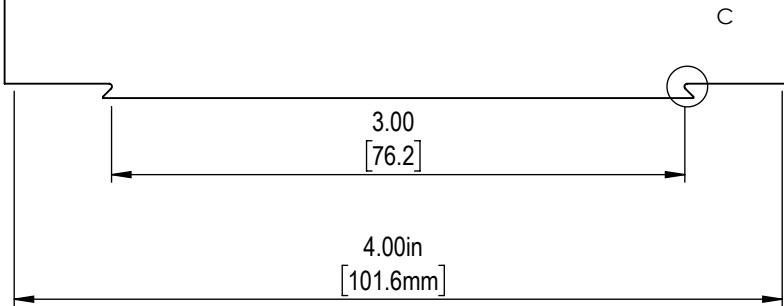


Ø 0.20in [5.0mm] ▽ 0.59in [15.0mm]  
M6 - 6H ▽ 0.47in [12.0mm]

**DETAIL B**  
SCALE 1 : 1



Dovetail width is recommended  
to be 75% of material width

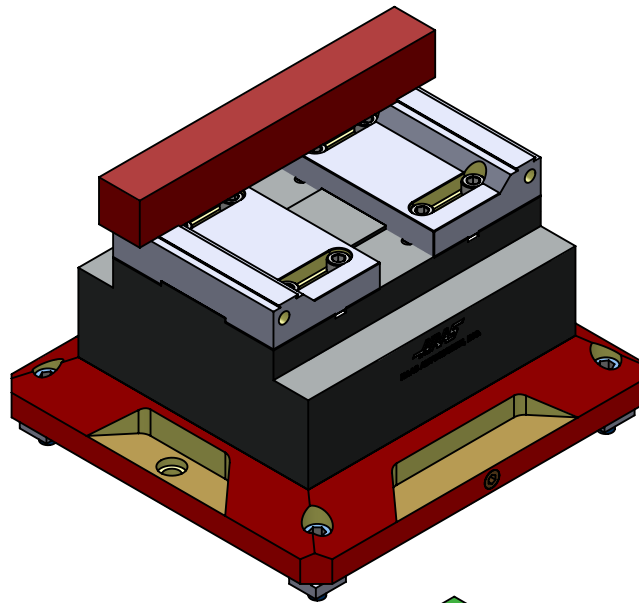


Note:

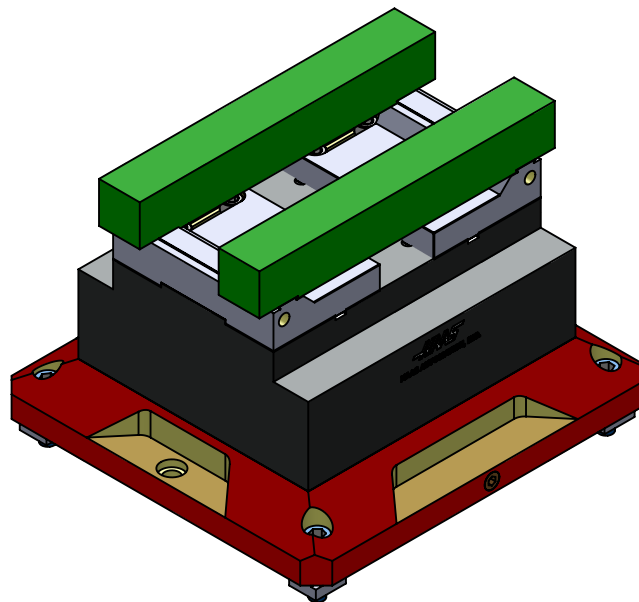
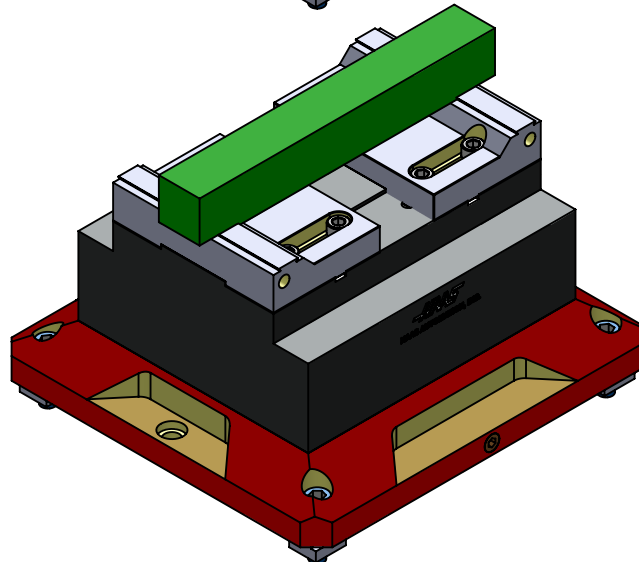
1. Off centered clamping is not allowed. Workpiece must be centered or balanced on opposite side or damage will occur.
2. Jaw stroke = 5mm per side, 10mm total.
3. Vise Clamping Range:
  - [A] Both Jaws Inward 0.4 - 1.6in [10-40mm]
  - [B] Both Jaws Outward 3.9-6.7in [99-170mm]
  - [C] One Jaw Inward, One Jaw Outward 2.2-5.6in [56-142mm]

Note: Dovetail clamping is not required, but can be utilized for more secure clamping as needed

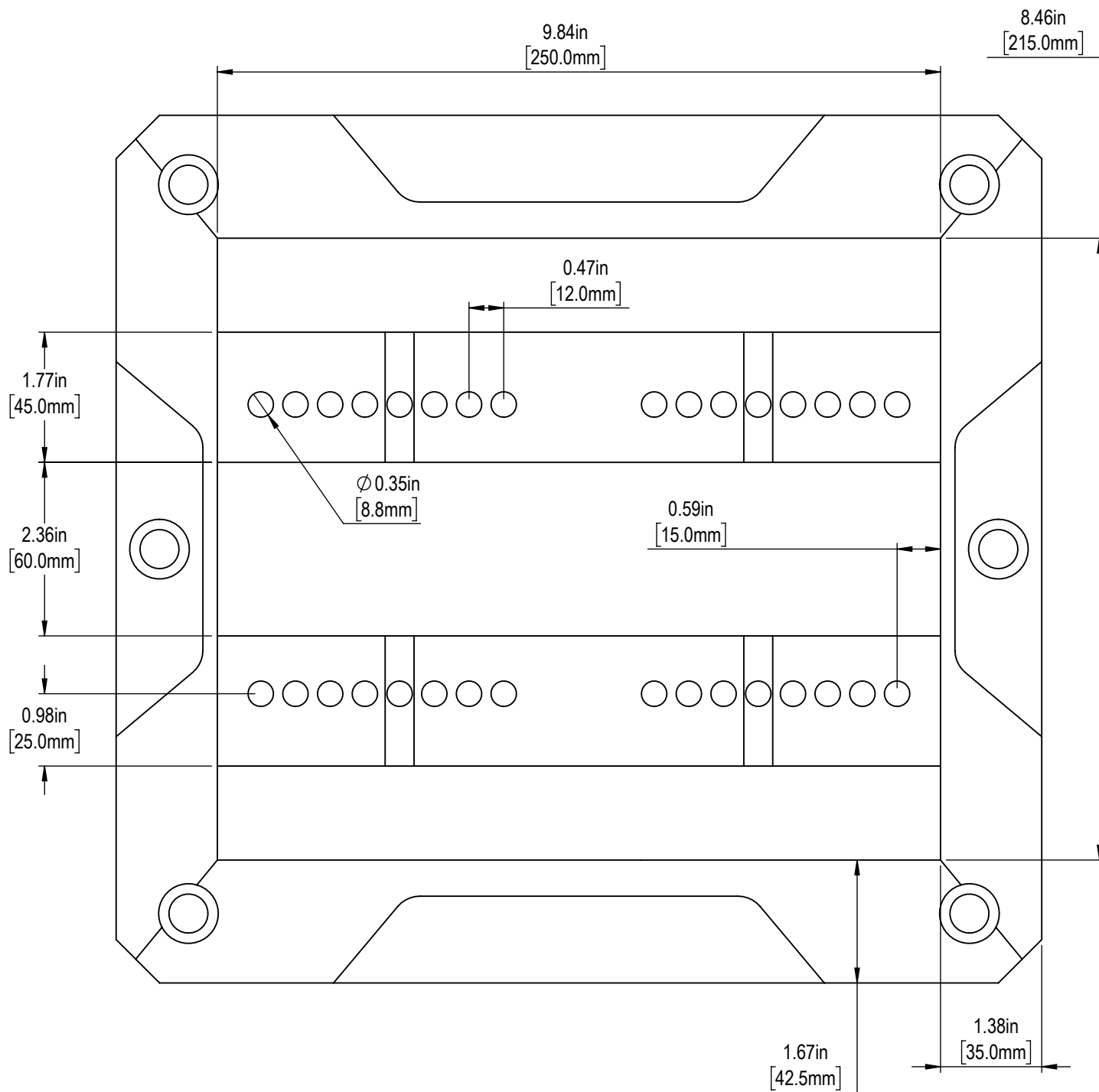
Incorrect

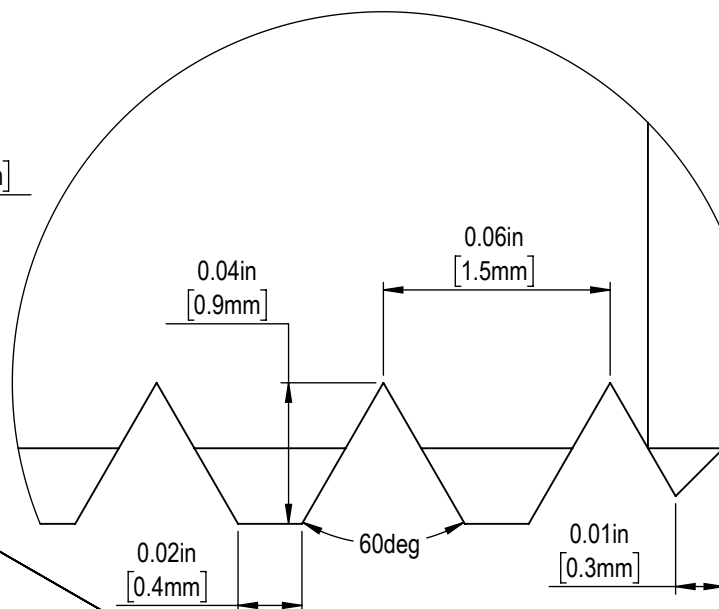
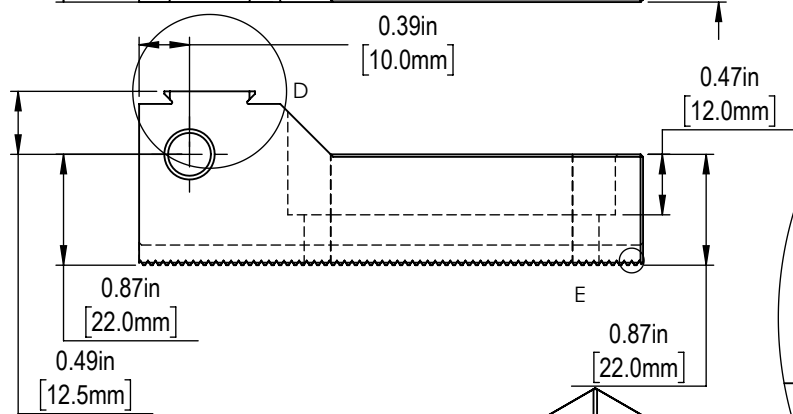
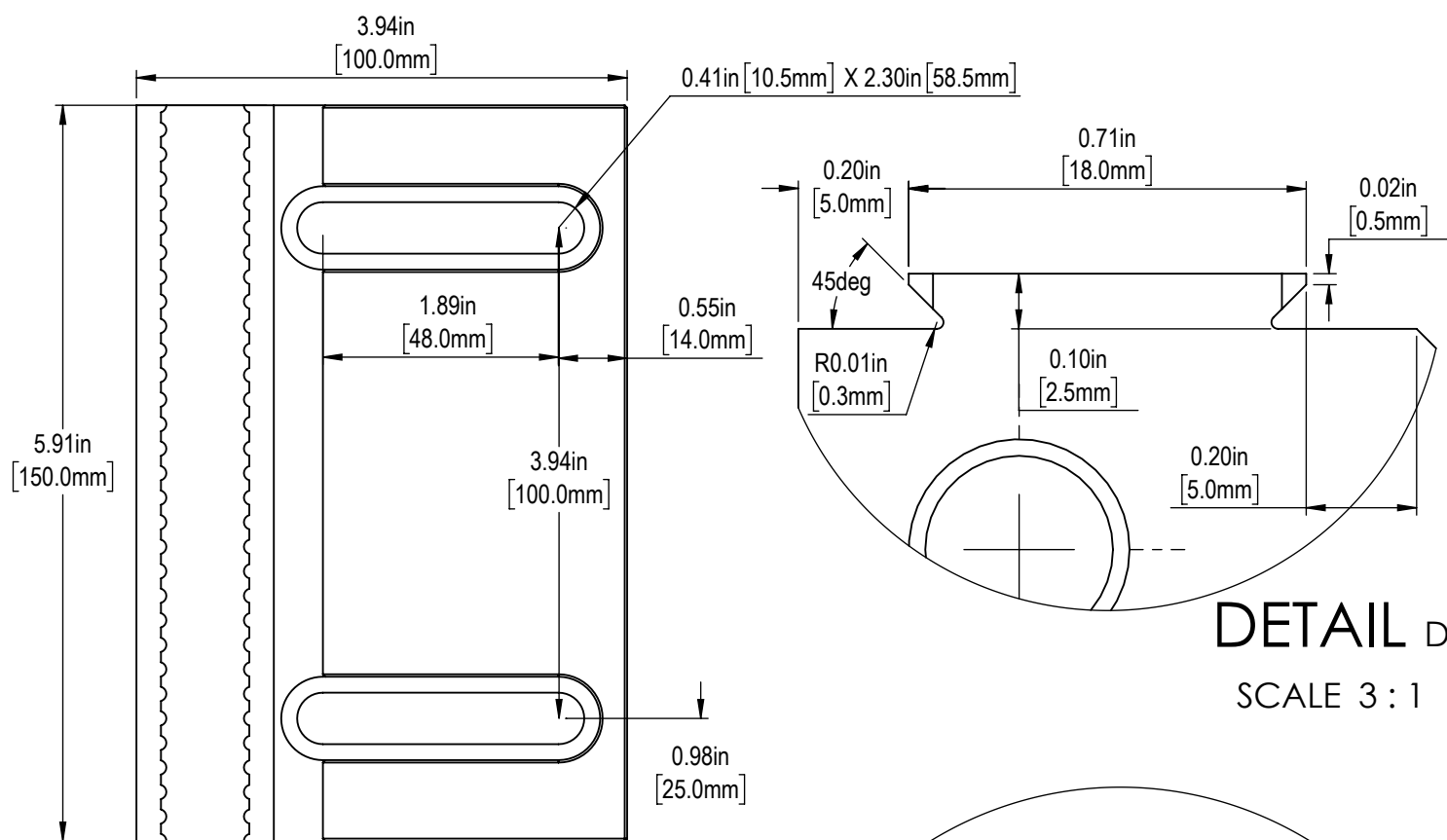


Correct



Warning: Off-centered clamping will result in damage to vise not covered under warranty





2 x  $\varnothing$  0.33in [8.5mm]  $\nabla$  0.89in [22.5mm]  
M10x1.5 - 6H  $\nabla$  0.59in [15.0mm]

HARDENED TO 54-58 RC