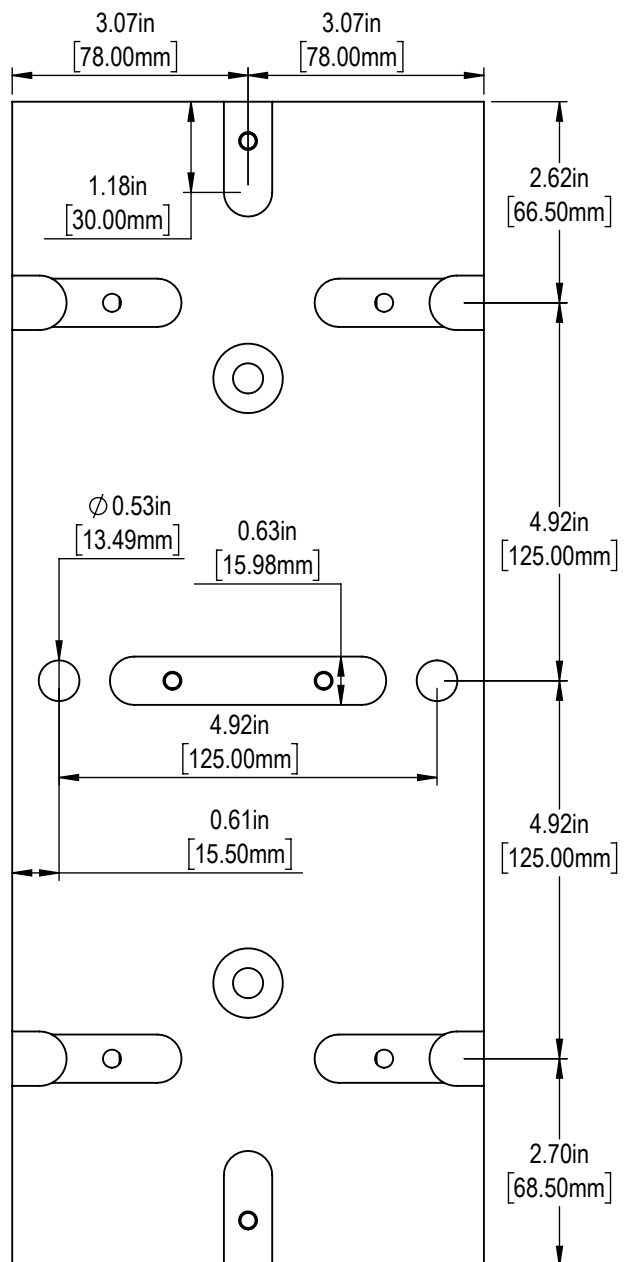
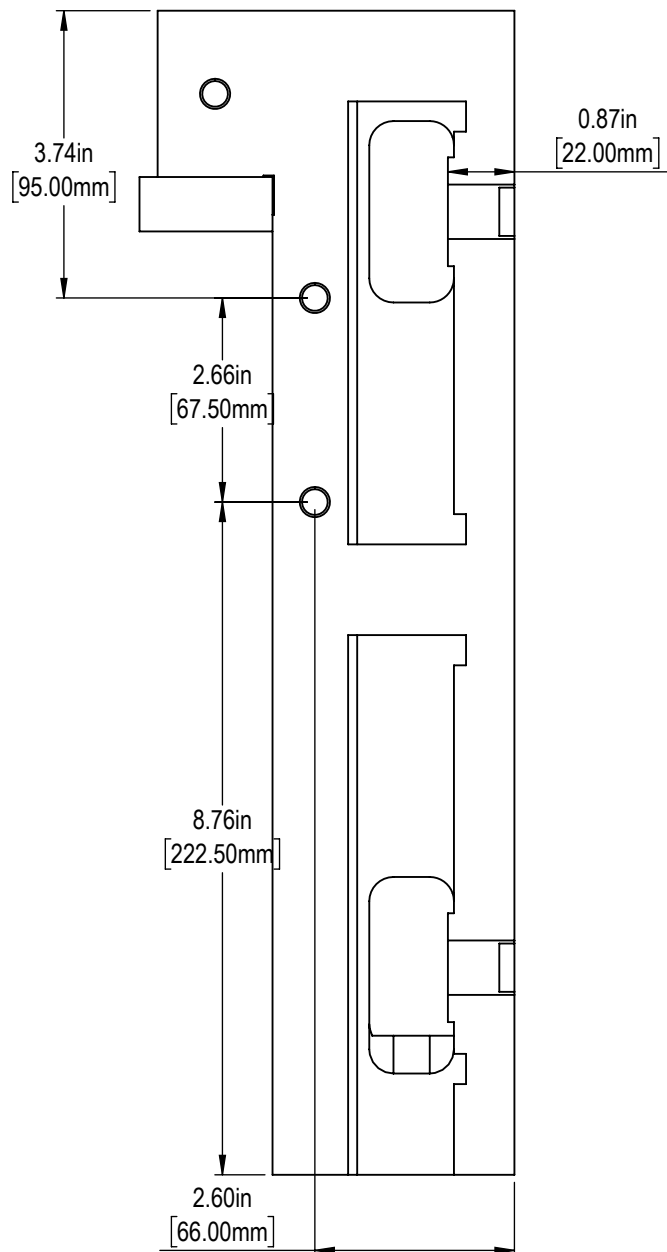
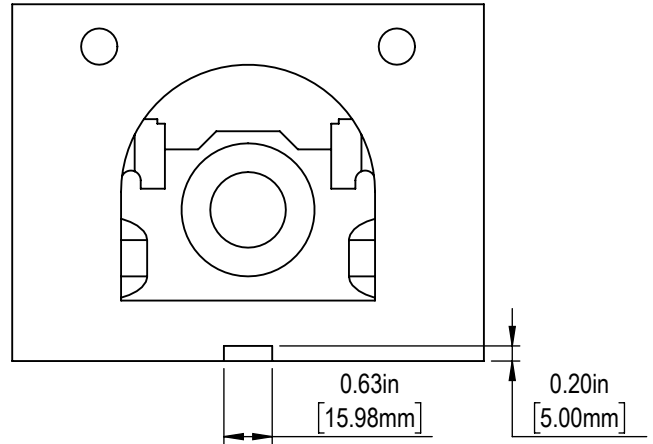
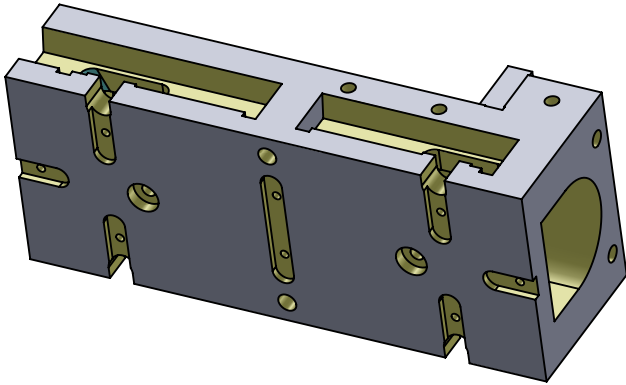
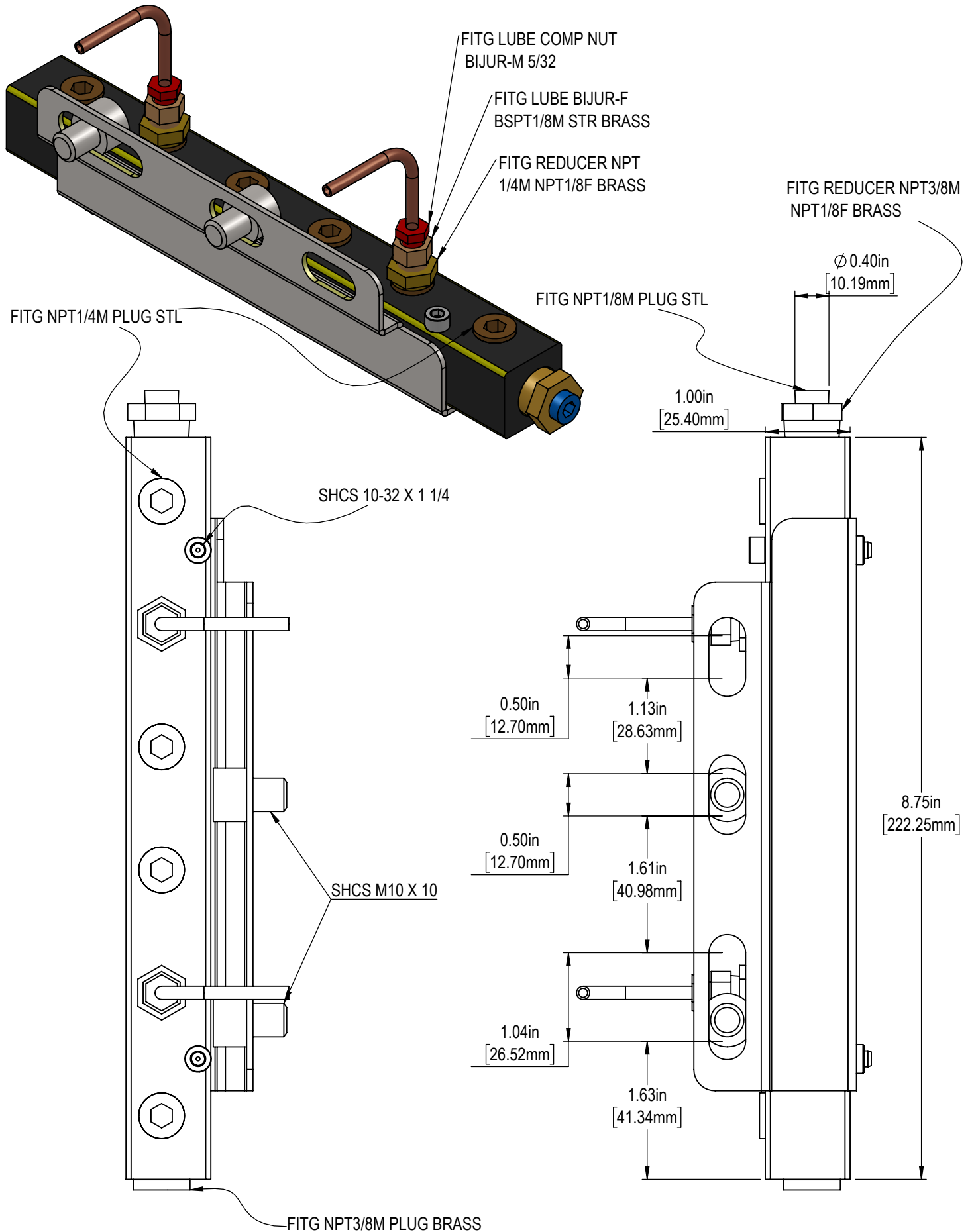


Included Jaw Dimensions

Note:

1. Off center clamping not allowed. Workpiece must be centered or balanced on opposite side or damage will occur
2. DO NOT EXCEED 18 clamp force setting. Doing so will destroy vise.
3. Clean lead screw regularly with a nylon or soft wire brush.
4. Apply Mobil XHP 322 Grease to ways and screw every 1000 cycles





*Due to continual product improvements, dimensions are subject to change without notice