

7

6

5

4

3

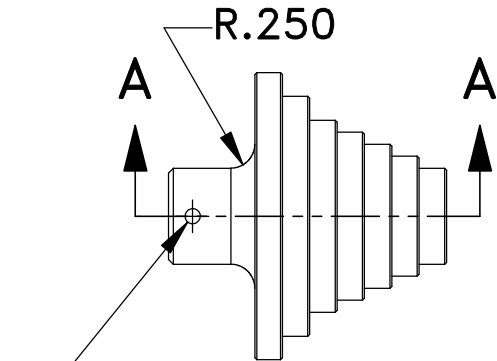
2

1

X2.500 Z-1.710  
 X2.000 Z-1.425  
 X1.750 Z-1.140  
 X1.500 Z-.855  
 X1.250 Z-.570  
 X1.000 Z-.285

X3.100 Z-2.100  
 X2.990 Z-2.100  
 X3.100 Z0.100  
 X2.990 Z-1.710  
 X2.500 Z-1.425  
 X2.000 Z-1.140  
 X1.750 Z-0.855  
 X1.500 Z-0.570  
 X1.250 Z-0.285  
 X1.000 Z0.000  
 X0  
 X-0.062 Z0.100  
 X-0.062 Z0.000

Z0



10-32 Through,  
Near Side Only

**SECTION A-A**  
**SCALE 1 : 1**

**SHEET 1 OF 1**

LATHE FINISH 63 μINCH  
 BREAK EDGES .03/.01 OUTER, .04/.02 R INNER  
 X.XXX DIAMETER & SURFACES // & ⊥ .002 INCH/INCH

MILL FINISH 125 μINCH  
 BREAK EDGES .03/.01 OUTER, .025/.005 R INNER  
 X.XXX DIAMETER & SURFACES // & ⊥ .001 INCH/INCH

INCH UNITS UNLESS OTHERWISE SPECIFIED  
 X/X ±0.06, X.X ±0.06, X.XX ±0.02, X.XXX ±0.005  
 ANGLES ±1°, X.XXX DIAMETERS Ⓢ Ⓩ 0.005  
 NPT ±1/2 TURN TO GAGE

Approved By: **mterryberry** Date: **01-21-21**

Material: **Aluminum**

Units: **Inches**



Visit [www.HaasCNC.com](http://www.HaasCNC.com)



**HAAS AUTOMATION, INC.**

**Co-Axial  
Indicator Holder**

SIZE	SCALE	Material Number
<b>A</b>	<b>1:2</b>	<b>TOD-L1XZ</b>

A

B

C

D

E

F

G

H

J